

M E R I D I A N

147 S. CHERRY STREET, SUITE 200 | WINSTON-SALEM, NC 27101 | P 336.722.1986 | F 336.723.3173 | MERIDIANREALTY.COM

19,590± Downtown Office

635 W. Fourth Street
Winston-Salem, NC 27101



Excellent opportunity to lease downtown office space. 15 parking spaces on site, and two parking decks adjacent to building. Conveniently located within easy walking distance to restaurants, retail, and amenities. First Floor has direct access to 4th street.

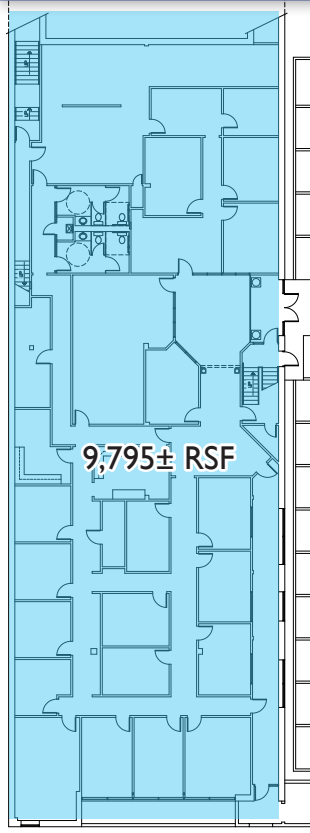
For more information:

Charlie H. Fulk, CCIM
Cfulk@meridianrealty.com
336.480.2089

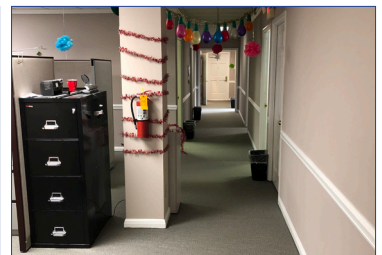
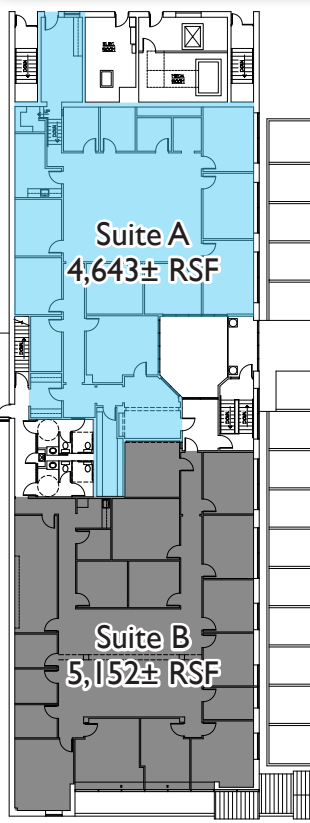
FOR LEASE: \$14 PSF Mod. Gross

WWW.MERIDIANREALTY.COM

First Floor



Second Floor



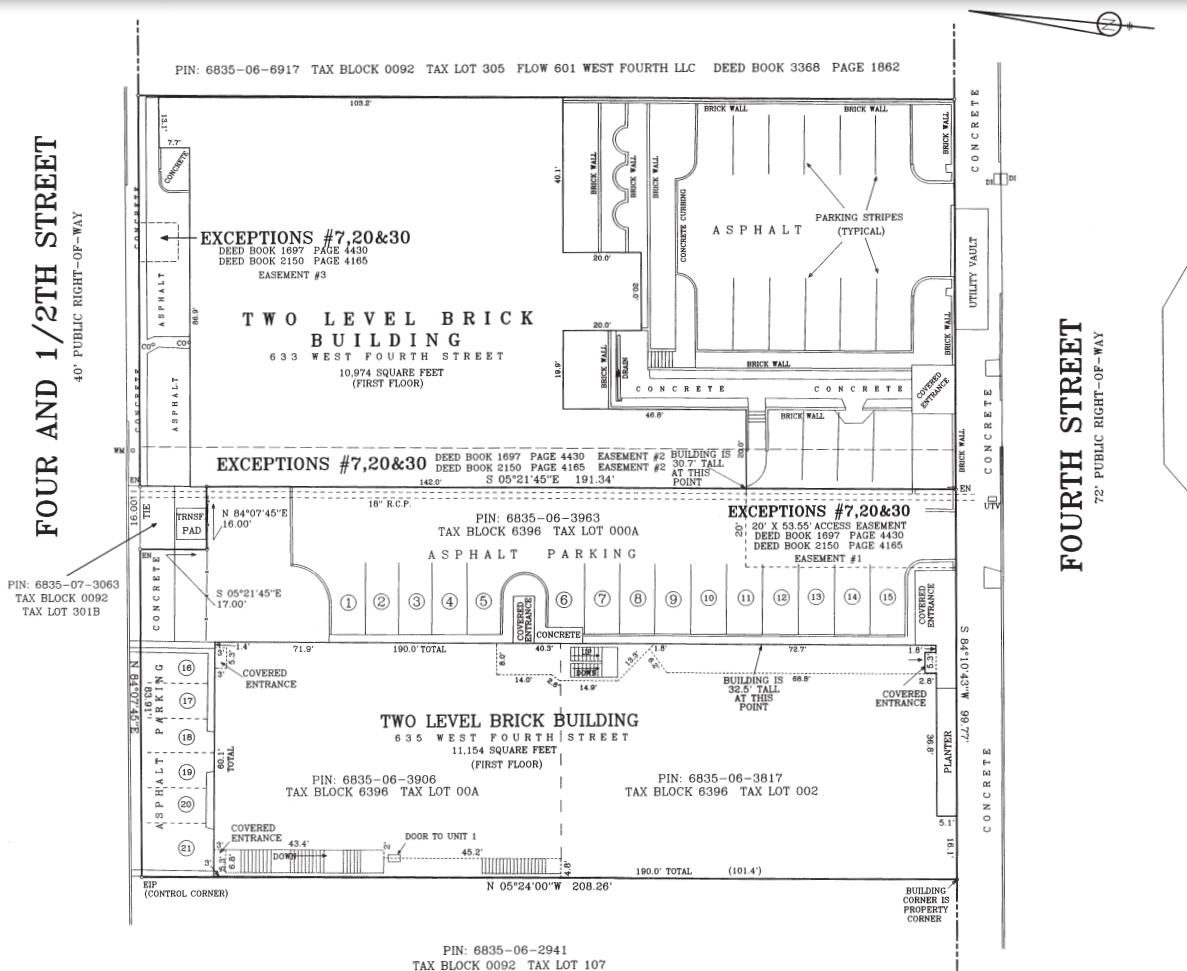
633 & 635 Fourth Street - Proposed Front Elevation



633 & 635 Fourth Street - Proposed Side Elevation



Survey



Highlights



- 14,438 ± Total SF
 - 9,795± SF – First Floor Total
 - 4,643± RSF – Second Floor, Suite A
- Ample Parking
- Walking distance to downtown amenities



No warranty or representation (express or implied) is made as to the accuracy or completeness of the information set forth herein. All information is submitted subject to errors, omissions, change of price, prior lease or sale, and withdrawal without notice. All marketing material produced by the Meridian Realty Group is proprietary. Any reproduction is expressly prohibited.



THE MERIDIAN REALTY GROUP | 147 S. CHERRY STREET, SUITE 200 | WINSTON-SALEM, NC 27101

P 336.722.1986 | F 336.723.3173

WWW.MERIDIANREALTY.COM