

FOR SALE

CONCORD OFFICE CONDO



54 JUNCTION SQUARE DRIVE, CONCORD MA

- Price: \$719,000
- Exterior just repainted this year and new roof installed in 2024
- 3-story building, constructed in 1985, is part of a 5 building, master-planned office park in West Concord Village
- 6 Parking spaces
- Electric & internet via Concord Municipal Light
- Strong condo association with well funded reserves
- Energy efficient with spray foam insulation throughout
- Steps from countless amenities including shopping, dining, and the MBTA commuter rail.
- Expenses:
 - Fiscal 2024 Taxes: \$6,682.66
 - Fiscal 2024 Condo Fees: \$10,711.24
 - Water/Sewer: \$514.00

Contact:

Tyler Spring

617.834.8602

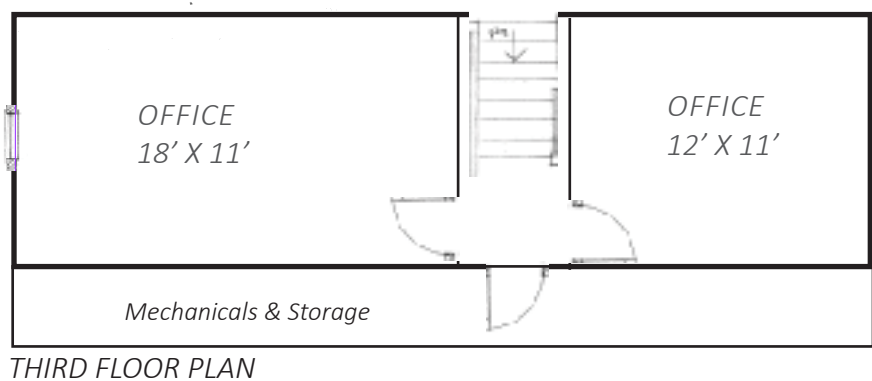
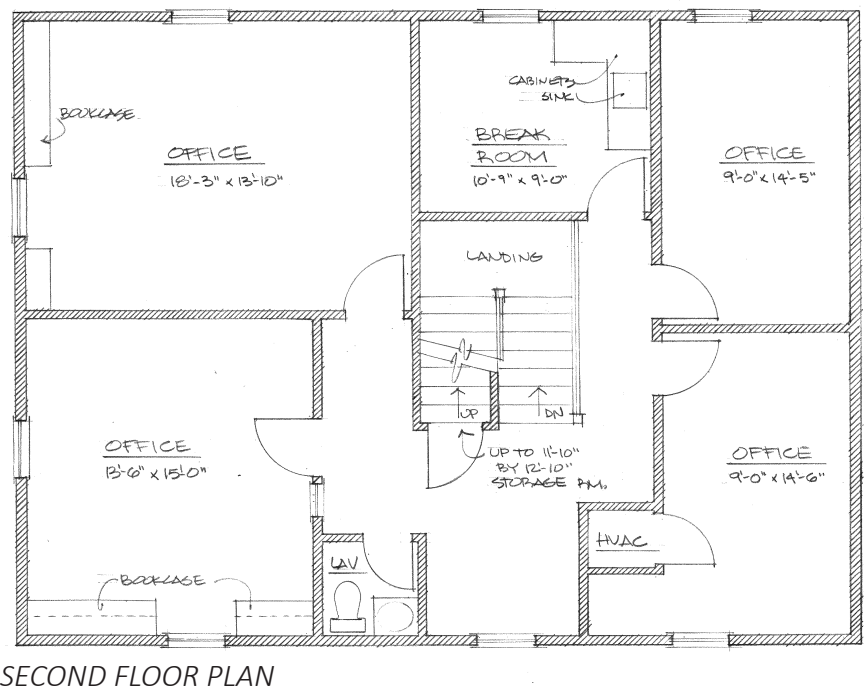
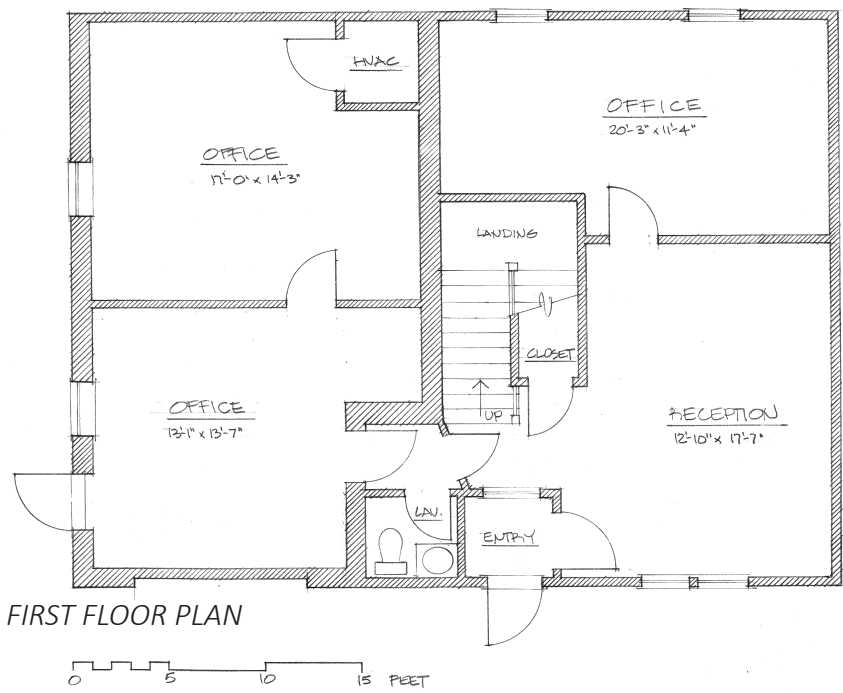
Tspring@omniproperties.com

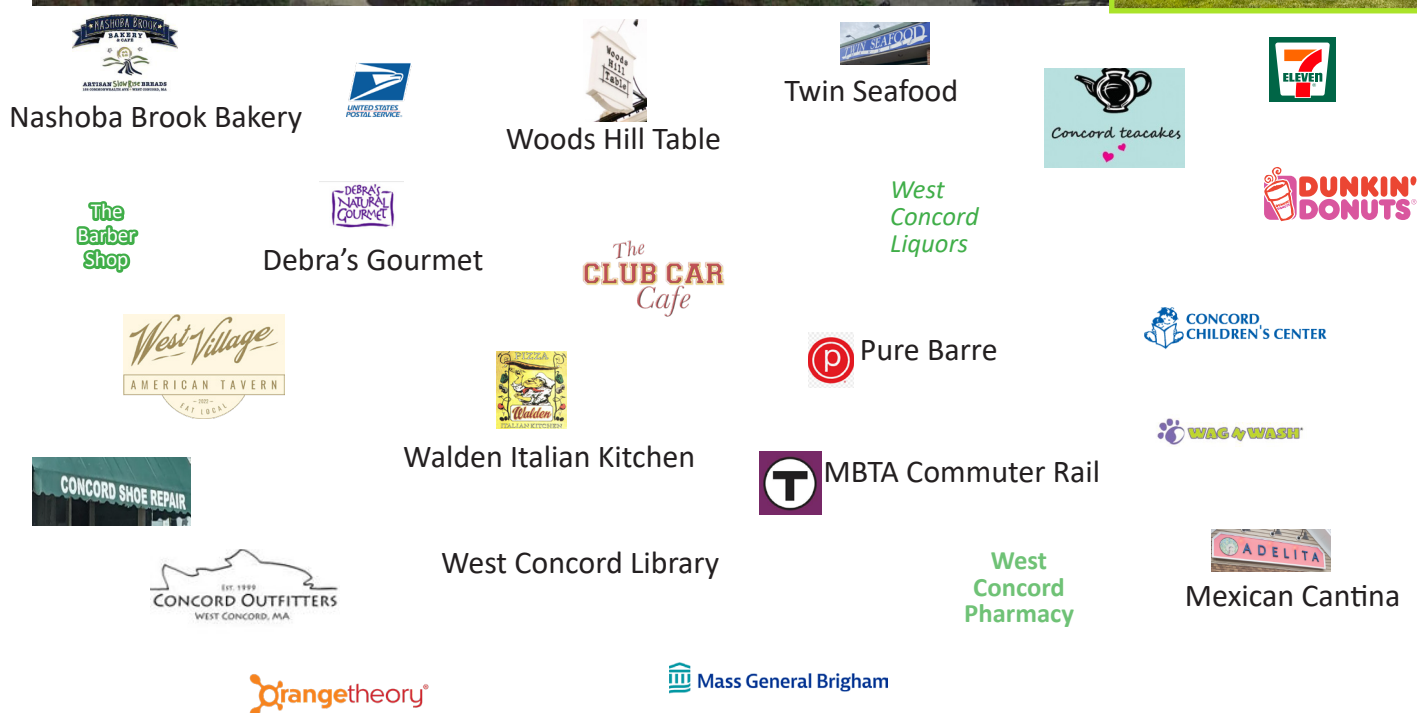


6 Liberty Way, Westford MA 01886

54 Junction Square Drive Concord MA

Floor Plans





54 Junction Square Drive, Concord MA

Zoning Map

