

32301 – 32303 HOWARD AVE.
MADISON HEIGHTS, MICHIGAN

INDUSTRIAL FOR SALE OR LEASE

For Sale: 13,680 Square Feet

For Lease: 6,840 Square Feet



SIGNATURE ASSOCIATES
KNOW SIGNATURE | KNOW RESULTS



PROPERTY FEATURES

- 6,840 square feet available for lease
- 1,300 square feet office
- Full 13,680 square foot building for sale
- 16' clear height
- (1) 16' x 12' grade level door
- (1) 3-ton crane
- 200 amps (expandable), 480 volts, 3-phase with buss ducts
- Freestanding building centrally located with easy access to I-75
- Entire building and individual units are available
- Bonus mezzanine storage
- Lease Rate: \$9.25/sq. ft. NNN
- Sale Price: \$1,614,240 (\$118.00/sq. ft.)



For more information, please contact:

JOHN DROZE
(248) 948 4191
jdroze@signatureassociates.com

CHRISTOPHER CALVANO
(248) 359 0610
ccalvano@signatureassociates.com

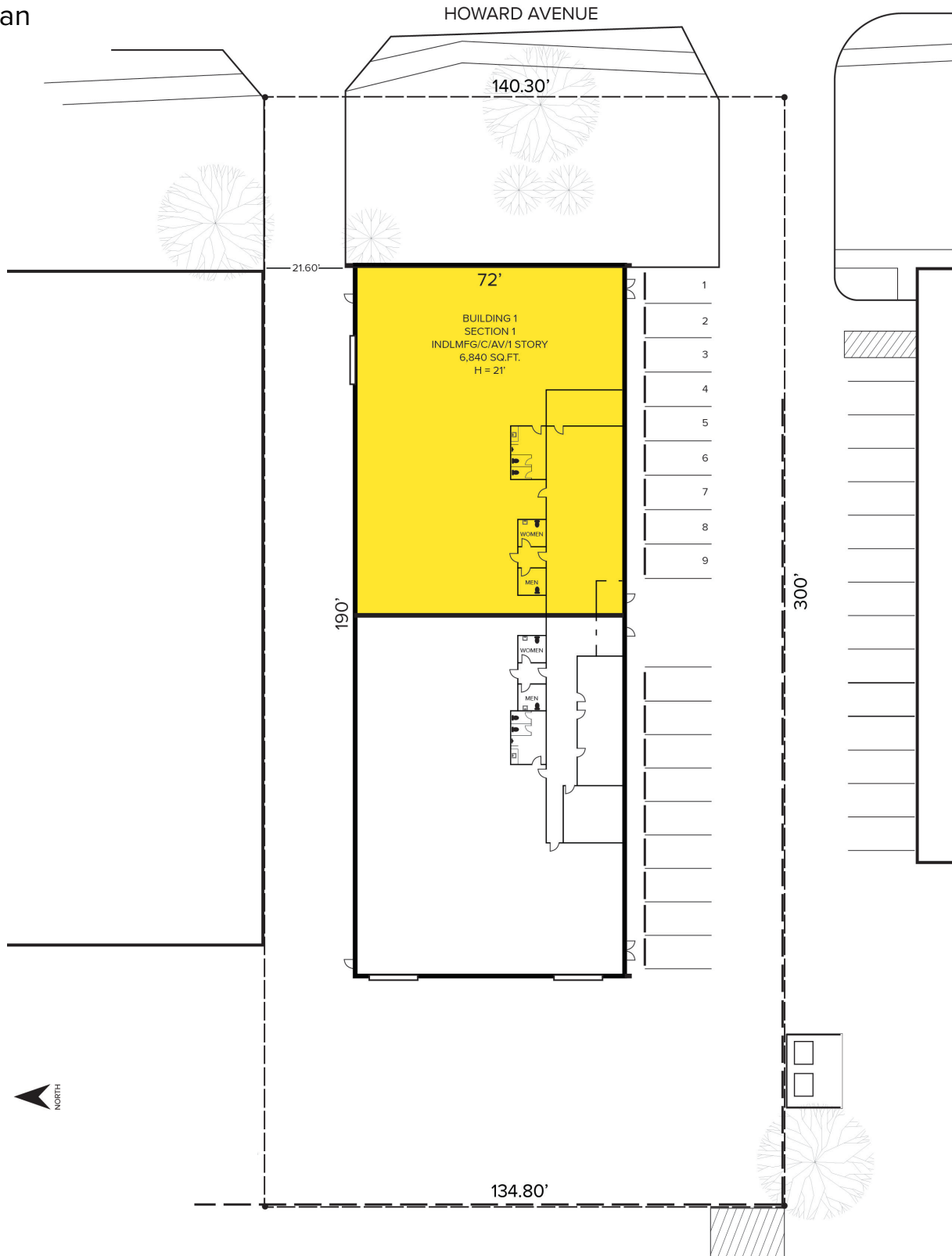
SIGNATURE ASSOCIATES
One Towne Square, Suite 1200
Southfield, MI 48076
www.signatureassociates.com

32301 – 32303 Howard Avenue – Madison Heights, MI

Industrial For Sale or Lease

For Lease –
6,840 SF
For Sale –
13,680 SF

Site Plan



For more information, please contact:

JOHN DROZE
(248) 948 4191
jdroze@signatureassociates.com

CHRISTOPHER CALVANO
(248) 359 0610
ccalvano@signatureassociates.com

SIGNATURE ASSOCIATES
One Towne Square, Suite 1200
Southfield, MI 48076
www.signatureassociates.com

32301 – 32303 Howard Avenue – Madison Heights, MI

Industrial For Sale or Lease

For Lease –
6,840 SF
For Sale –
13,680 SF

Aerial



For more information, please contact:

JOHN DROZE
(248) 948 4191
jdroze@signatureassociates.com

CHRISTOPHER CALVANO
(248) 359 0610
ccalvano@signatureassociates.com

SIGNATURE ASSOCIATES
One Towne Square, Suite 1200
Southfield, MI 48076
www.signatureassociates.com