

FOR LEASE | OFFICE SUITES

4100 NORTHWEST LOOP 410

SAN ANTONIO, TX 78229



FORUM
CRE



PROPERTY SPECIFICATIONS

Building Size: 38,000 SF

Minimum Space: 600 SF

Maximum Contiguous: 2,286 SF

Submarket: Northwest

Traffic Count (I-410): 197,887 VPD

PROPERTY OVERVIEW

Great office opportunity for lease in northwest San Antonio, Texas with space ranging from 600 SF to 2,286 SF with assigned covered parking. Onsite property management & maintenance staff.

LOCATION OVERVIEW

Located in northwest San Antonio, Texas in high traffic area with frontage to I-410 on the intersection with Babcock Rd. Close proximity to South Texas Medical Center, office buildings, medical offices and restaurants. Approximately 15 minutes to San Antonio International Airport.

AVAILABLE SUITES SIZE

Suite 107 600 SF

Suite 102 1,678 SF

Suite 200 2,286 SF

HECTOR ROMEU JR.
hectorr@forumcre.com
M: 956.212.1837
O: 210.580.4490

CARLO MOLANO, SIOR
carlom@forumcre.com
M: 956.523.9403
O: 956.717.9090

FOR LEASE | OFFICE SUITES

4100 NORTHWEST LOOP 410

SAN ANTONIO, TX 78229



FORUM
CRE



HECTOR ROMEU JR.
hectorr@forumcre.com
M: 956.212.1837
O: 210.580.4490

CARLO MOLANO, SIOR
carlom@forumcre.com
M: 956.523.9403
O: 956.717.9090

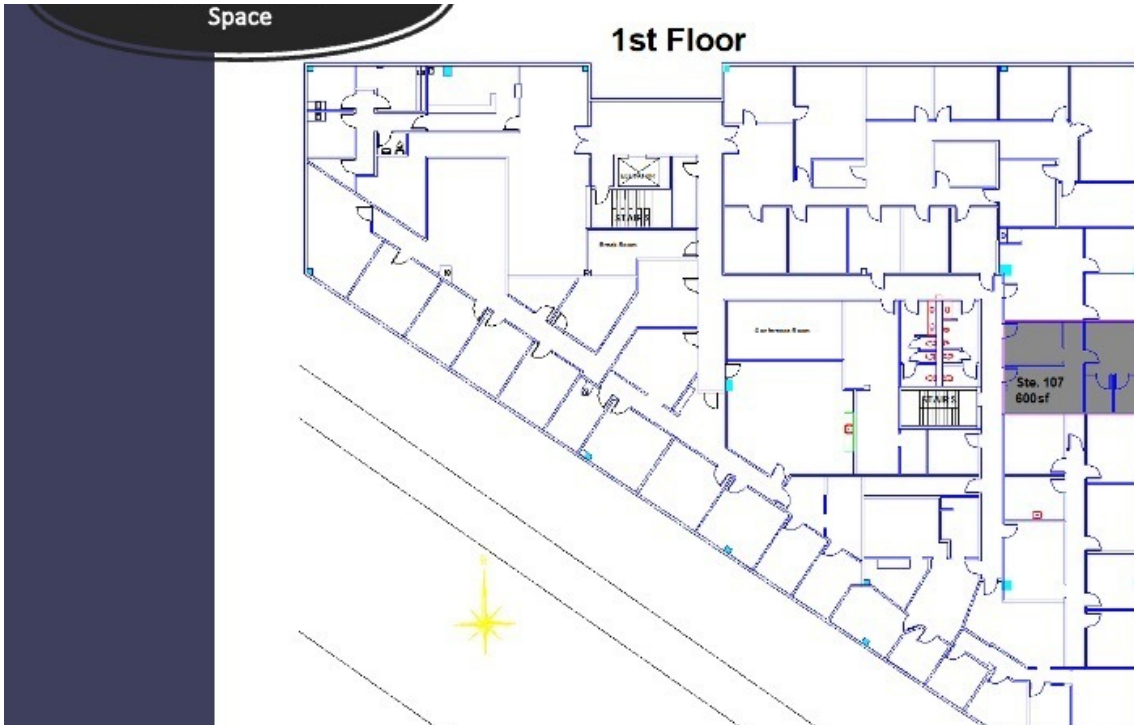
FOR LEASE | OFFICE BUILDING

4100 NORTHWEST LOOP 410

4100 NORTHWEST LOOP 410, SAN ANTONIO, TX 78229



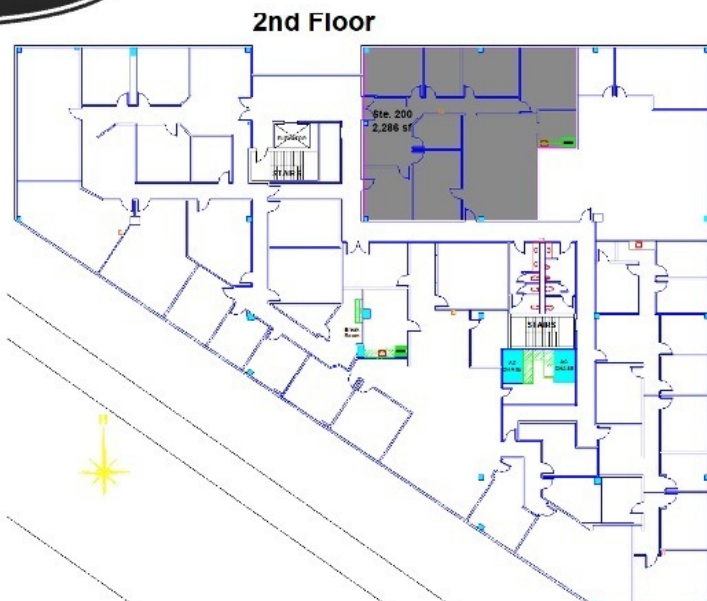
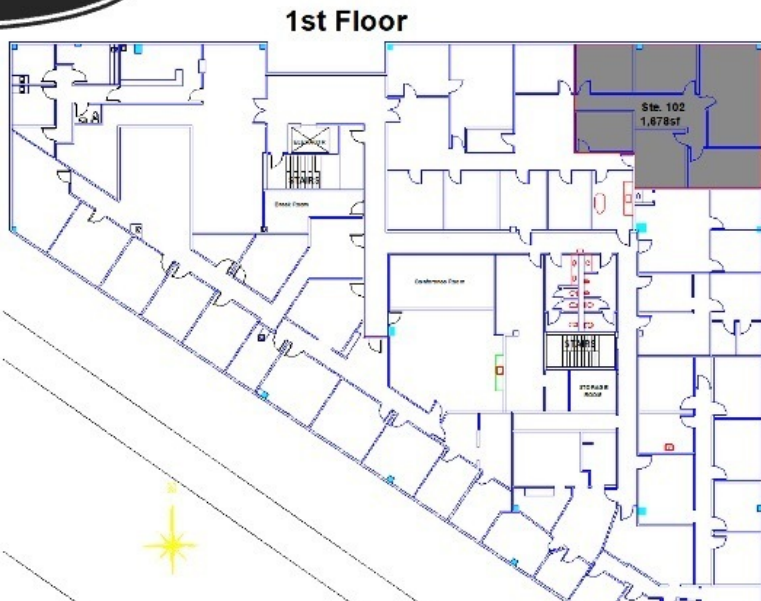
FORUM
CRE



- Avg. Rate:
- \$1.65sf (\$19.80)
 - All inclusive
 - Avg. annual increase of 3%

4100 Northwest Loop 410
— Available
Space

- Avg. Rate:
- 3-5yr Term Options
 - \$1.65sf (\$19.80)
 - All inclusive
 - Avg. annual increase of 3%
 - **AVAILABLE IN JULY 2024**



HECTOR ROMEU JR.
 hectorr@forumcre.com
 M: 956.212.1837
 O: 210.580.4490

CARLO MOLANO, SIOR
 carlom@forumcre.com
 M: 956.523.9403
 O: 956.717.9090

FOR LEASE | OFFICE SUITES

4100 NORTHWEST LOOP 410

SAN ANTONIO, TX 78229



FORUM
CRE



HECTOR ROMEU JR.
hectorr@forumcre.com
M: 956.212.1837
O: 210.580.4490

CARLO MOLANO, SIOR
carlom@forumcre.com
M: 956.523.9403
O: 956.717.9090

