



## PROPERTY INFORMATION

The Broadview Dairy Building is centrally located on the North Bank of the Spokane River and is within walking distance of downtown shopping, the Spokane Arena, First Interstate Performing Arts Center, the Convention Center and several hotels. Adjacent to Riverfront Park, The Podium and The ONE Stadium, makes this a prime location throughout the year.

## AVAILABLE SPACES

SPACE	LEASE RATE	SIZE (SF)
Office/Retail/Restaurant	\$15.50 SF/YR	4,460 USF
Commercial Kitchen	\$15.50 SF/YR	2,687 USF
Storage Area	\$7.00 SF/YR	1,478 USF

## PROPERTY FEATURES

- Ground Floor Office, Retail, Restaurant
- Large Outdoor Private Patio
- Commercial Kitchen
- Views of Downtown and the Pavilion
- Vaulted Ceilings
- Dedicated Parking
- Estimated NNN Expense: \$8.50/SF
- 1,478 - 8,625 USF Available

Goodale & Barbieri Company  
818 West Riverside #300  
Spokane, WA 99201  
www.g-b.com

Alicia Barbieri | Vice President  
509.344.4902 // abarbieri@g-b.com

JJ Robbins | Commercial Broker and Leasing Manager  
509.344.4915 // jj.robbins@g-b.com

1



Warranty: Goodale & Barbieri Company does not guarantee, warrant, either expressed or implied, any information supplied by the Seller. Buyer should rely on his own verification of this information as a part of their own due diligence. Copyright: We respect the intellectual property of others. If you believe that your work has been copied in a way that constitutes copyright infringement please contact us immediately.

Goodale & Barbieri Company  
818 West Riverside #300  
Spokane, WA 99201  
www.g-b.com

Alicia Barbieri | Vice President  
509.344.4902 // [abarbieri@g-b.com](mailto:abarbieri@g-b.com)

JJ Robbins | Commercial Broker and Leasing Manager  
509.344.4915 // [jj.robbins@g-b.com](mailto:jj.robbins@g-b.com)

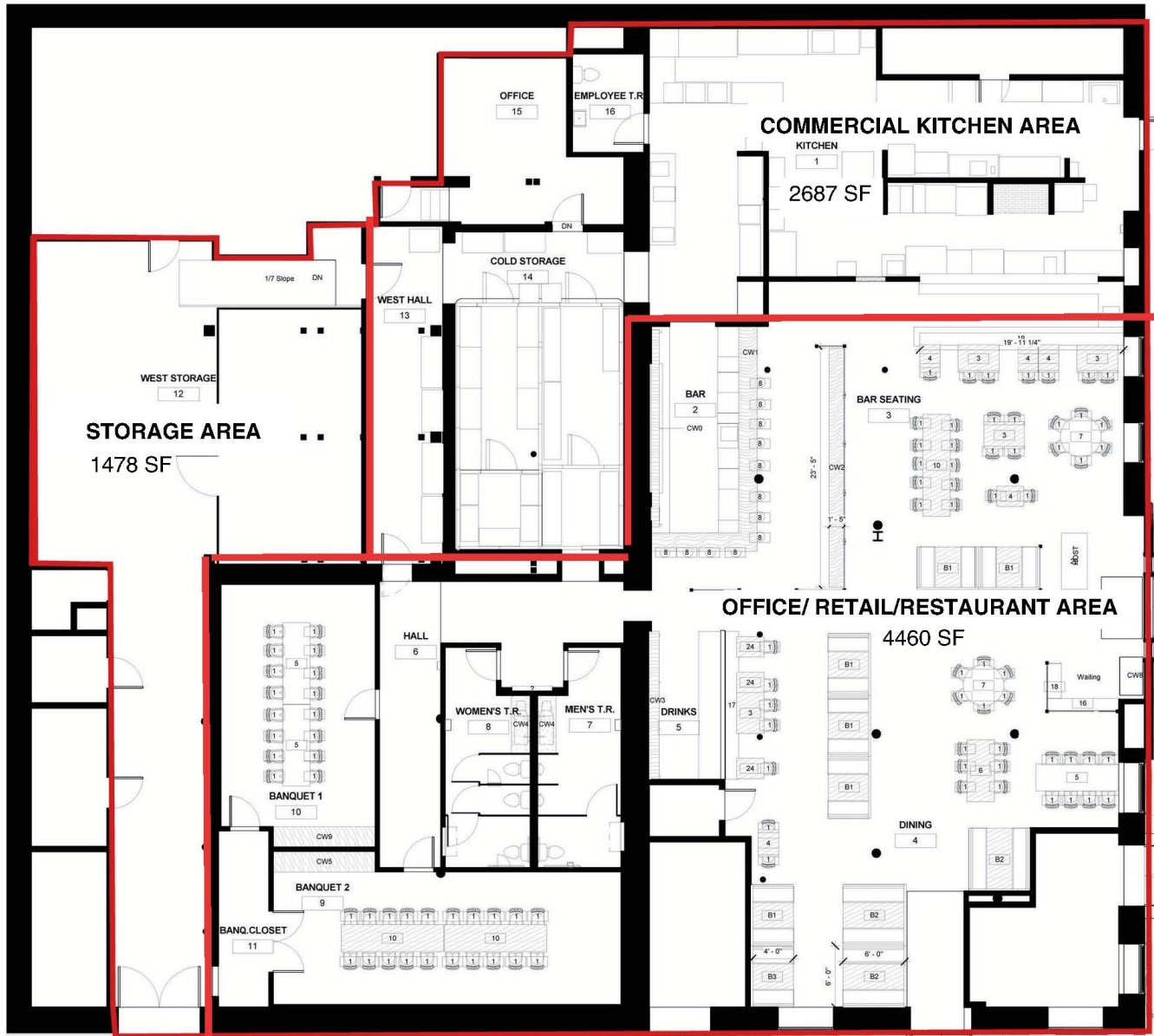


Warranty: Goodale & Barbieri Company does not guarantee, warrant, either expressed or implied, any information supplied by the Seller. Buyer should rely on his own verification of this information as a part of their own due diligence. Copyright: We respect the intellectual property of others. If you believe that your work has been copied in a way that constitutes copyright infringement please contact us immediately.

Goodale & Barbieri Company  
818 West Riverside #300  
Spokane, WA 99201  
www.g-b.com

Alicia Barbieri | Vice President  
509.344.4902 // abarbieri@g-b.com

JJ Robbins | Commercial Broker and Leasing Manager  
509.344.4915 // jj.robbins@g-b.com



Warranty: Goodale & Barbieri Company does not guarantee, warrant, either expressed or implied, any information supplied by the Seller. Buyer should rely on his own verification of this information as a part of their own due diligence. Copyright: We respect the intellectual property of others. If you believe that your work has been copied in a way that constitutes copyright infringement please contact us immediately.



<b>POPULATION</b>	<b>1 MILE</b>	<b>3 MILES</b>	<b>5 MILES</b>
<b>Total Population</b>	16,772	124,582	233,238
<b>Average Age</b>	38	39	40
<b>Average Age (Male)</b>	38	38	39
<b>Average Age (Female)</b>	38	40	41
<b>HOUSEHOLDS &amp; INCOME</b>	<b>1 MILE</b>	<b>3 MILES</b>	<b>5 MILES</b>
<b>Total Households</b>	6,710	52,675	97,238
<b># of Persons per HH</b>	2.5	2.4	2.4
<b>Average HH Income</b>	\$67,034	\$79,086	\$86,827
<b>Average House Value</b>	\$483,241	\$404,148	\$414,858

*Demographics data derived from AlphaMap*