



MARKETING FLYER

615 ARAPEEN

UNIVERSITY OF UTAH RESEARCH PARK | SALT LAKE CITY, UT

SPENCER WIXOM

801-633-3891

s_wixom@woodburycorp.com



PROJECT HIGHLIGHTS

- 3,226 to 12,624 RSF available
- Lab and office compatible
- 4.5 parking stalls / 1,000 SF
- Class-A finishes
- Preeminent Location
- Fiber optic data connectivity
- ½ mile from the heart of the University
- 32,077 students at the University provides a large pool from which employees and interns may be recruited
- 9.8 miles to the Salt Lake International Airport
- 3.9 miles from downtown SLC

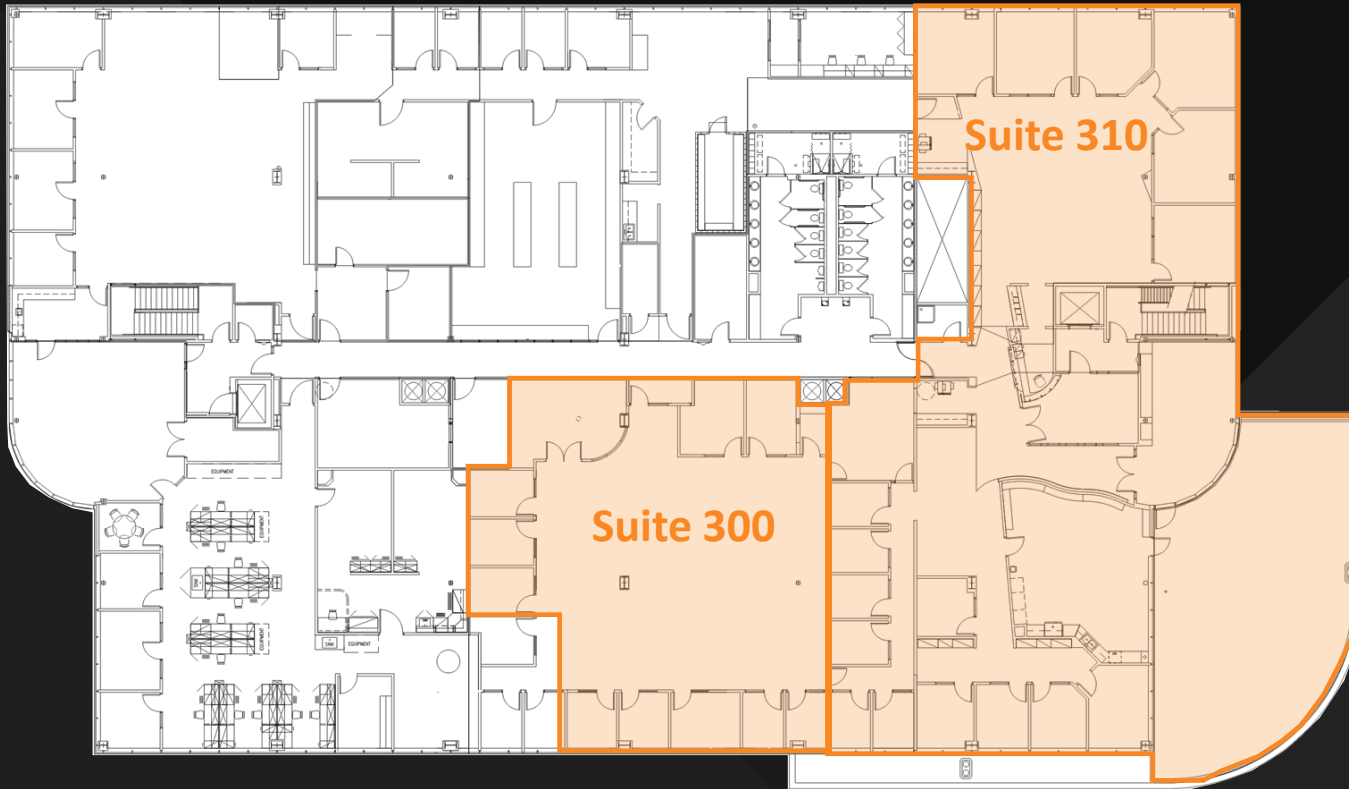


Suite 204

- 6,490 RSF available

Suite 208

- 3,226 RSF available



Suite 300

- 4,350 RSF available

Suite 310

- 8,274 RSF available
 - Demised currently as 3,426 SF and 4,848 SF

12,624 contiguous SF

