

FORMER SEARS AT GLYNN PLACE MALL

100 MALL BLVD, BRUNSWICK, GA 31525

FOR SALE OR LEASE



LOCATION DESCRIPTION

8.77 AC former Sears box for sale or lease

PROPERTY HIGHLIGHTS

- Situated at the intersection of Altama Connector and Hwy 25 / Golden Isle Parkway - which connects I-95 to St. Simon & Sea Islands.
- Excellent visibility from Golden Isles Parkway, the main commercial corridor of Brunswick, and less than 2 mi from I-95
- Adjacent to the Glynn Place Mall - surrounding retail includes Home Depot, Walmart, Publix, TJMaxx
- Traffic Counts: Golden Isles Pkwy - 23,100 AADT; Altama Ave - 10,200 AADT



DEMOGRAPHICS	3 MILES	5 MILES	10 MILES
2023 Total Population	29,465	50,937	83,413
2023 Total Households	11,892	20,138	34,385
2023 Daytime Population	32,139	51,869	83,778
2023 Average HH Income	\$79,789	\$78,932	\$104,187

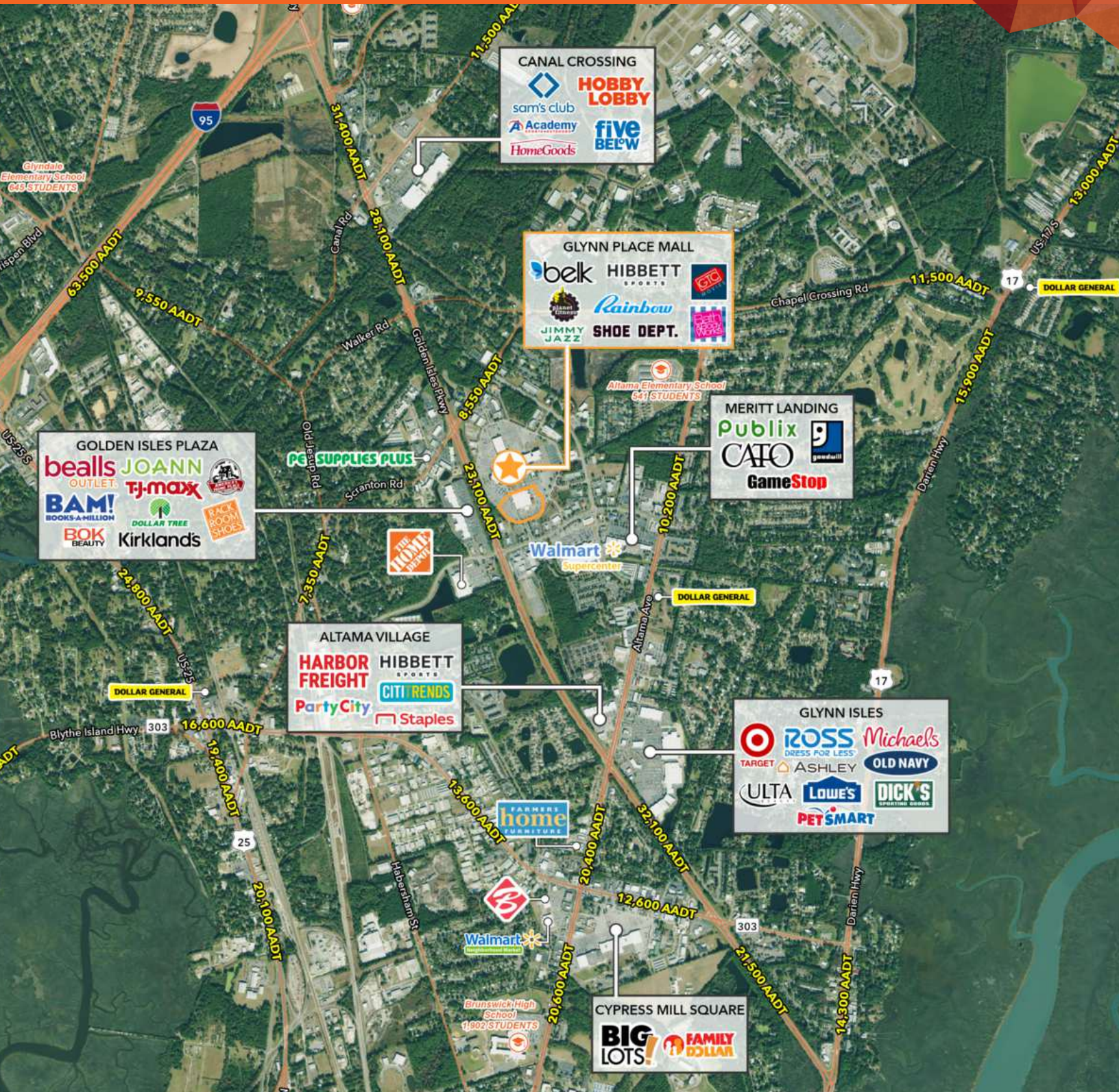


KELLY PULIGNANO
kelly.pulignano@tscg.com
904.565.2635

FORMER SEARS AT GLYNN PLACE MALL

100 MALL BLVD, BRUNSWICK, GA 31525

FOR SALE OR LEASE

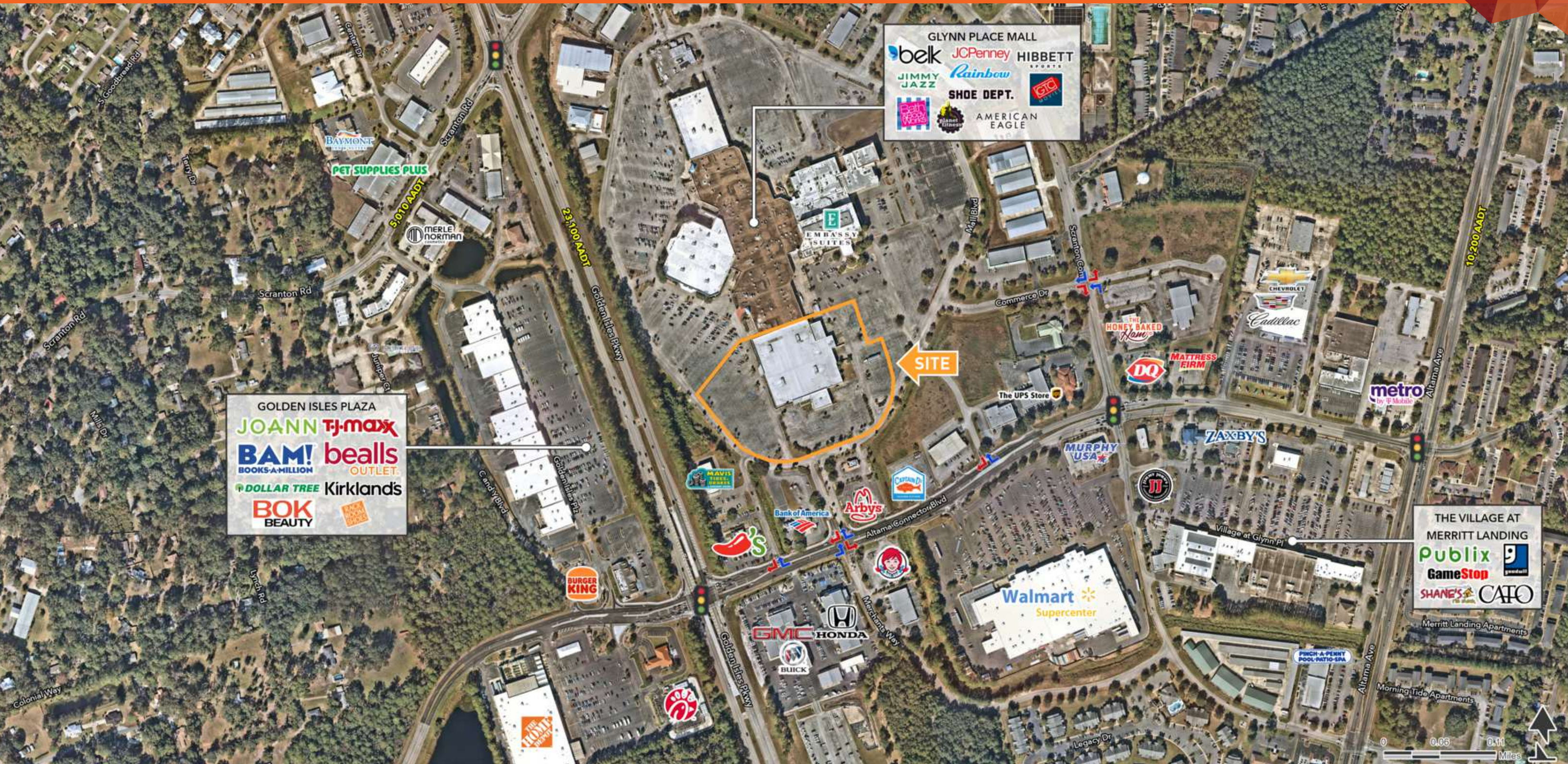


KELLY PULIGNANO
kelly.pulignano@tscg.com
904.565.2635

FORMER SEARS AT GLYNN PLACE MALL

100 MALL BLVD, BRUNSWICK, GA 31525

FOR SALE
OR LEASE



KELLY PULIGNANO
kelly.pulignano@tscg.com
904.565.2635