

FOR SALE

**230 SW 27th Street,
Oklahoma City, OK 73109**



Johnson
Commercial Group

JohnsonCommercialGroup.com



Offering Summary

Building Size: 1,291 SF

Sales Price: \$130,000

Price Per SF: \$100.70

Zoning: C-CBD

Year Built: 1915

****Owner/Broker****

Chris Johnson
chris@jcgok.com
405.435.3572

Property Overview

For Sale – 1,291 SF Office Space | Oklahoma City, OK

Located at the corner of SW 27th Street and Harvey, this 1,291 SF office is a great fit for small businesses or professional services. The suite features five private offices, a reception area, kitchen, and one restroom, providing a functional balance of private and collaborative space. Recently painted with new flooring throughout, the office is move-in ready. Additional highlights include street signage for visibility and convenient access in a central OKC location.



BRICK & BEAM
REALTY

FOR SALE

230 SW 27th Street,
Oklahoma City, OK 73109



Johnson
Commercial Group

JohnsonCommercialGroup.com



Chris Johnson
chris@jcgok.com
405.435.3572



BRICK & BEAM
REALTY

FOR SALE

230 SW 27th Street,
Oklahoma City, OK 73109



Johnson
Commercial Group

JohnsonCommercialGroup.com



Chris Johnson
chris@jcgok.com
405.435.3572



BRICK & BEAM
REALTY

FOR SALE

230 SW 27th Street,
Oklahoma City, OK 73109



Johnson
Commercial Group

JohnsonCommercialGroup.com



Chris Johnson
chris@jcgok.com
405.435.3572



BRICK & BEAM
REALTY

FOR SALE

230 SW 27th Street,
Oklahoma City, OK 73109



Johnson
Commercial Group

JohnsonCommercialGroup.com



Chris Johnson
chris@jcgok.com
405.435.3572



BRICK & BEAM
REALTY

FOR SALE

230 SW 27th Street,
Oklahoma City, OK 73109



Johnson
Commercial Group

JohnsonCommercialGroup.com



Chris Johnson
chris@jcgok.com
405.435.3572



BRICK & BEAM
REALTY

FOR SALE

230 SW 27th Street,
Oklahoma City, OK 73109



Johnson
Commercial Group

JohnsonCommercialGroup.com



Chris Johnson
chris@jcgok.com
405.435.3572



BRICK & BEAM
REALTY

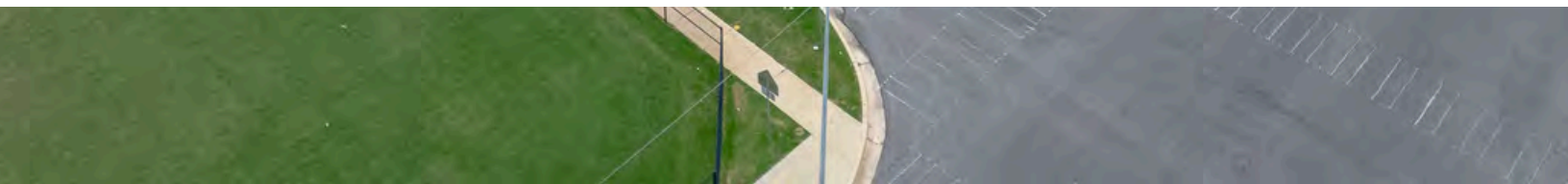
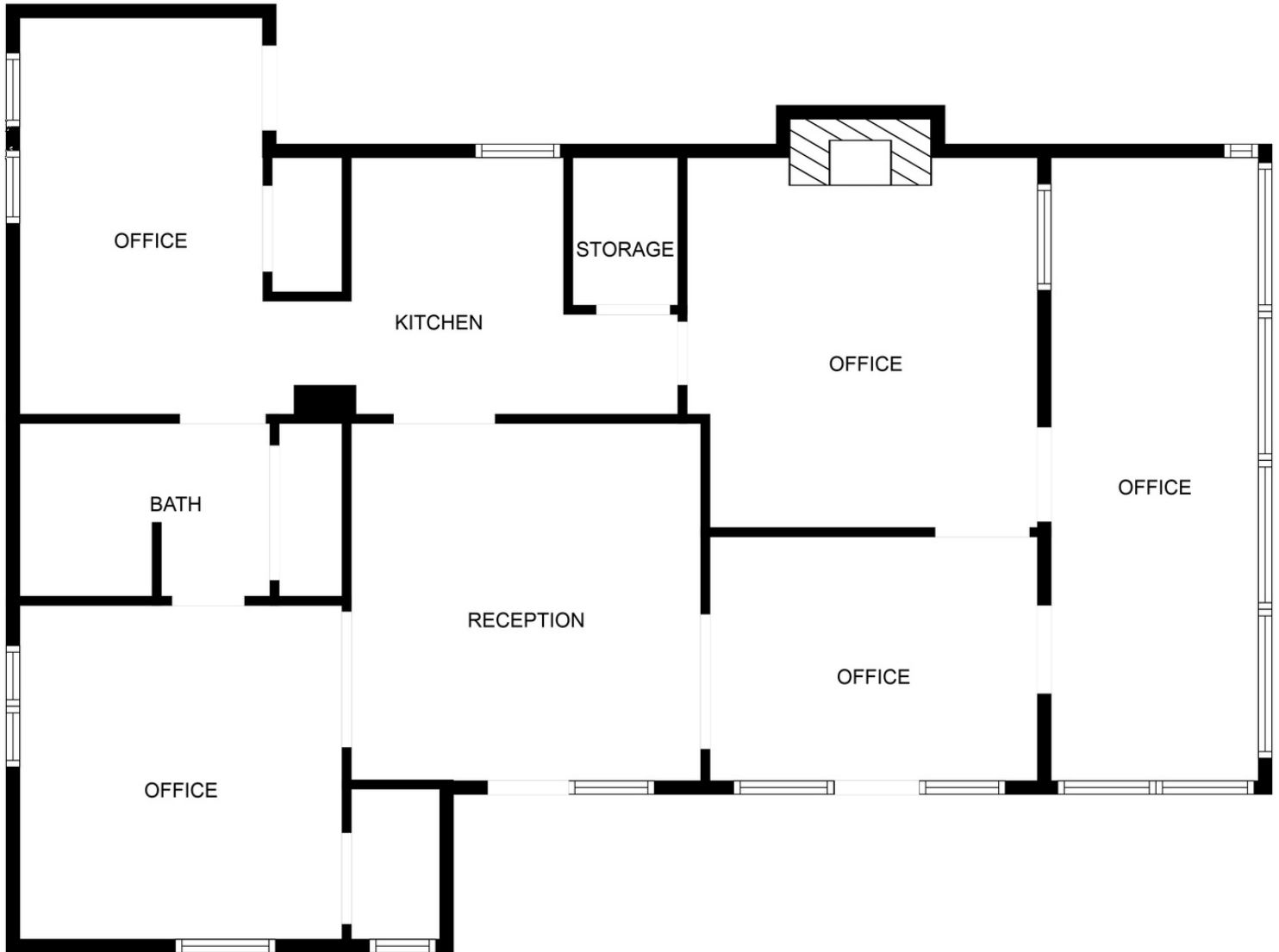
FOR SALE

**230 SW 27th Street,
Oklahoma City, OK 73109**



Johnson
Commercial Group

JohnsonCommercialGroup.com



Chris Johnson
chris@jcgok.com
405.435.3572



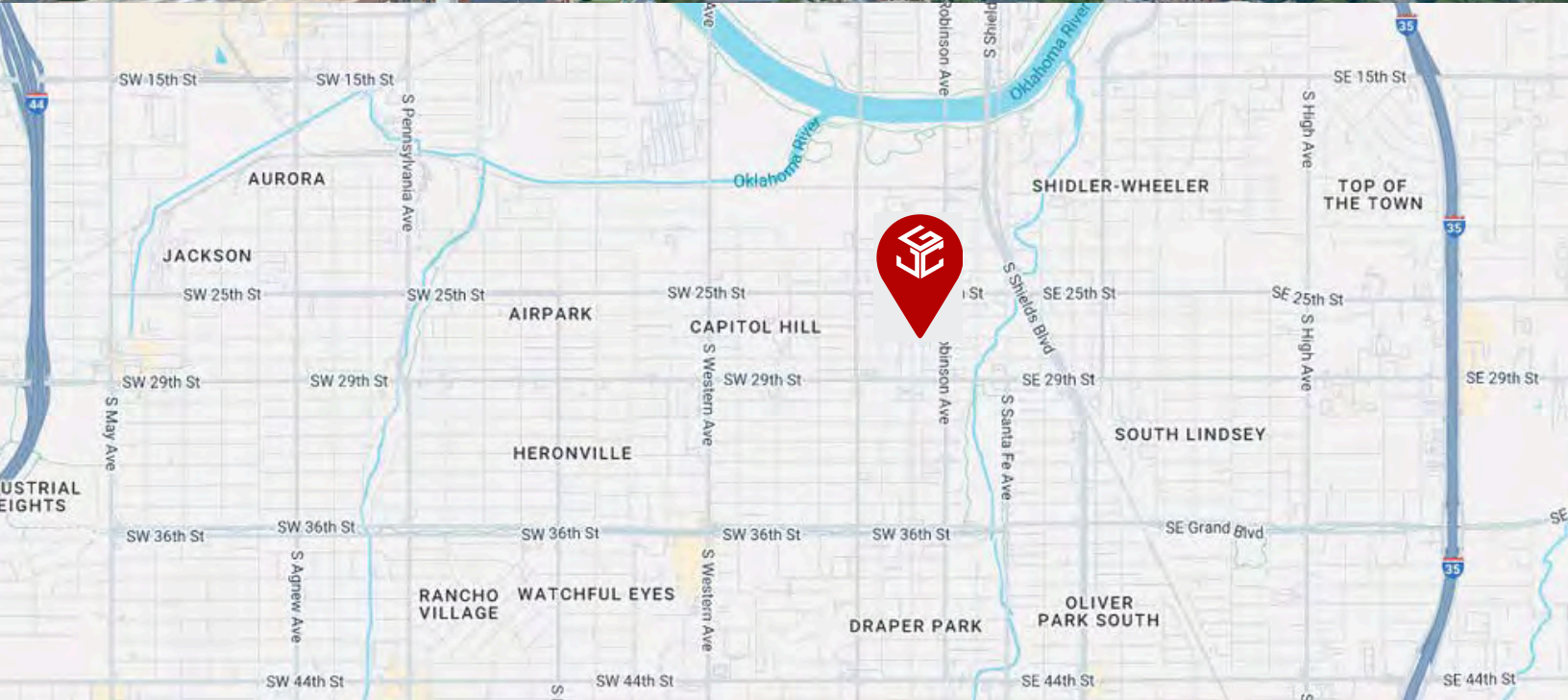
BRICK & BEAM
REALTY

FOR SALE

**230 SW 27th Street,
Oklahoma City, OK 73109**



JohnsonCommercialGroup.com



Chris Johnson
chris@jcgok.com
405.435.3572



BRICK & BEAM
REALTY

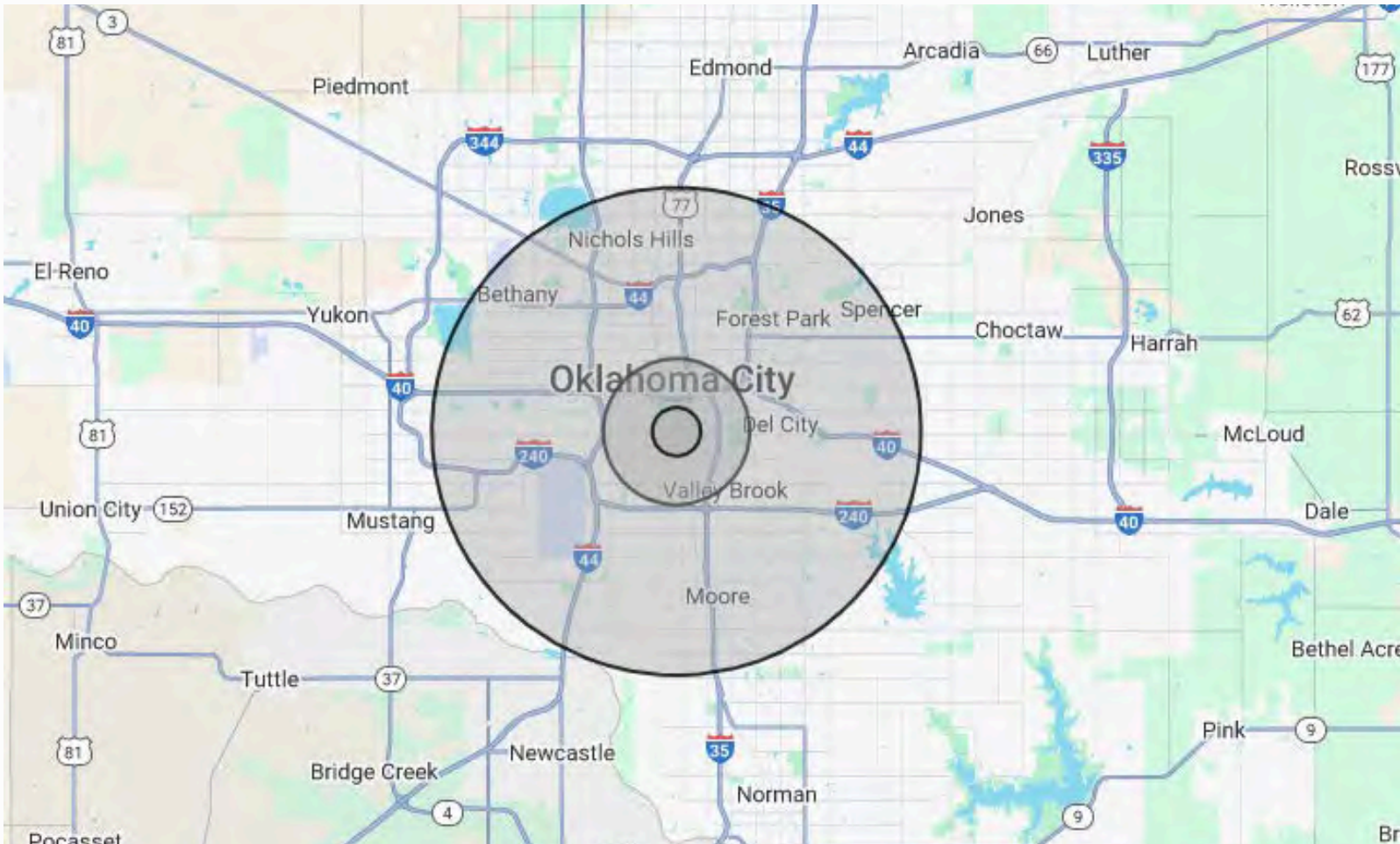
FOR SALE

**230 SW 27th Street,
Oklahoma City, OK 73109**



Johnson
Commercial Group

JohnsonCommercialGroup.com



Demographics

1 MILE

3 MILE

10 MILE

Population	11,614	87,448	610,553
Average Age	33	32.5	35
Employment	3,282	77,009	406,271
Households	4,082	31,693	241,904
Ave. Household Income	\$52,209	\$53,405	\$69,447
Median Household Value	\$72,466	\$75,031	\$154,461

Traffic Count

Average Daily Volume

8,178 Vehicles

Demographic data provided by CoStar

Chris Johnson
chris@jcgok.com
405.435.3572



BRICK & BEAM
REALTY

FOR SALE

**230 SW 27th Street,
Oklahoma City, OK 73109**



Johnson
Commercial Group

JohnsonCommercialGroup.com



Disclaimer

A real estate broker is not authorized to give legal or tax advice. No representation is made by Johnson Commercial Group, its agents or employees, as to the legal effect or tax consequences of the information contained herein or any transaction relating thereto. Although all information furnished regarding property sales or financing options are from sources deemed to be reliable, such information has not been verified and no express representation is made on, or is in any way implied as to the accuracy thereof and is subject to errors, omissions, change of price, or other conditions prior to sale or withdrawal without notice. **** Owner/Broker****

Chris Johnson
chris@jcgok.com
405.435.3572



BRICK & BEAM
REALTY