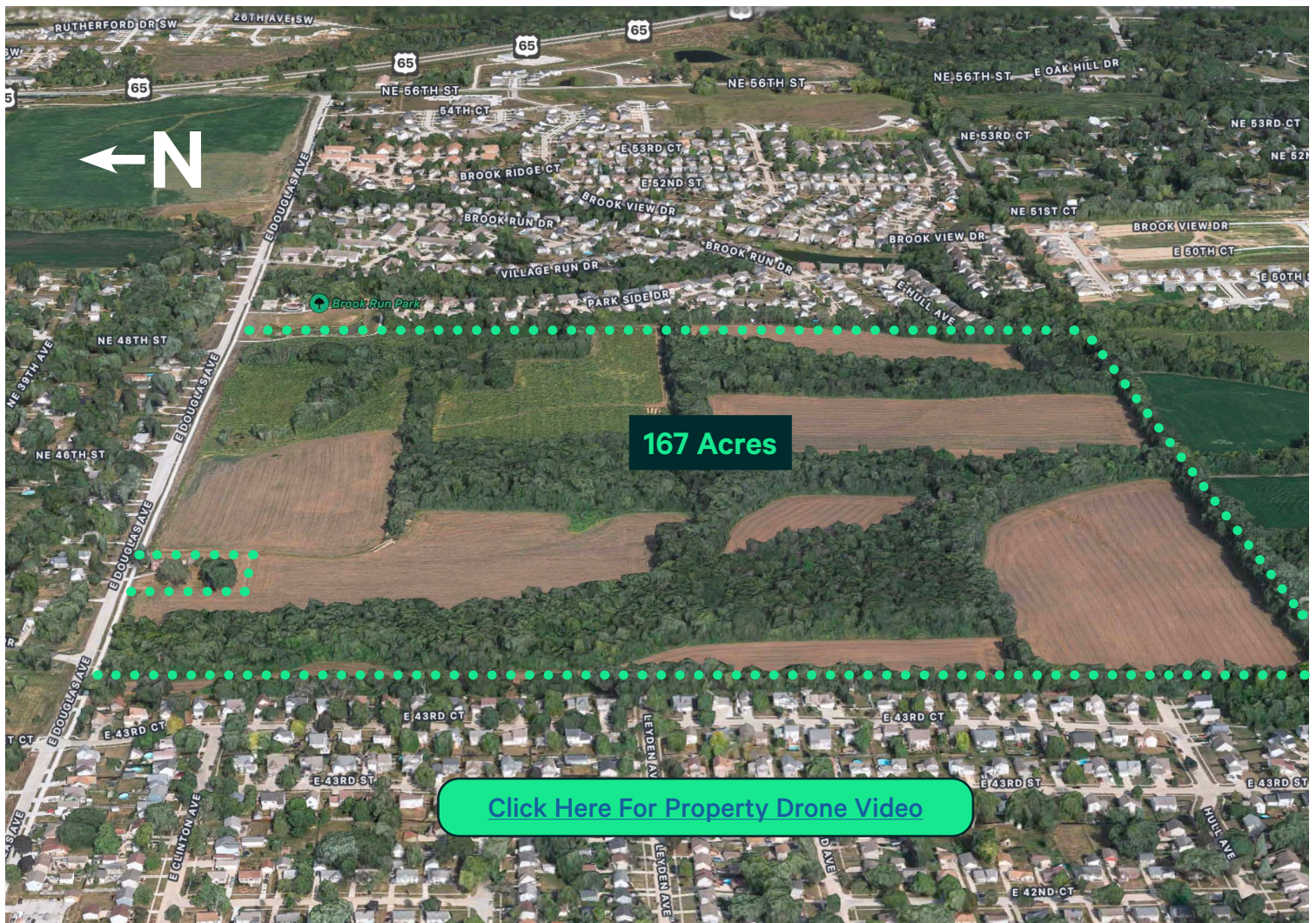


Development Land

East Douglas Avenue
Des Moines, Iowa
www.cbre.com/desmoines

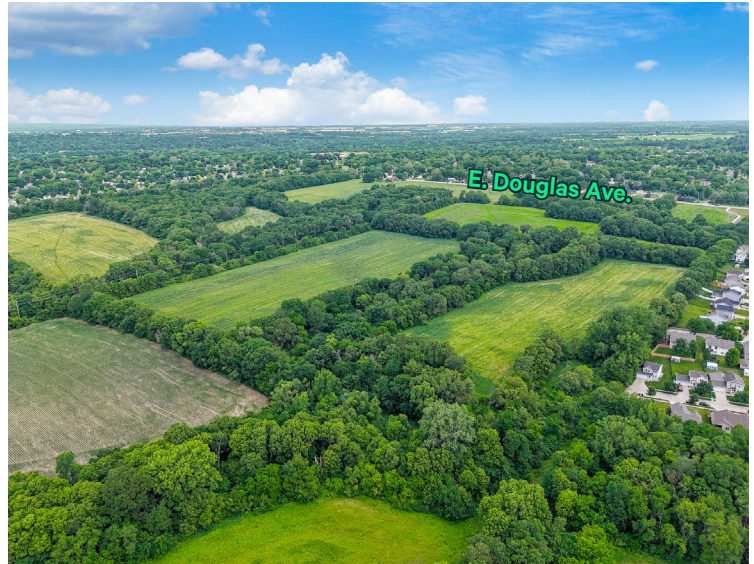
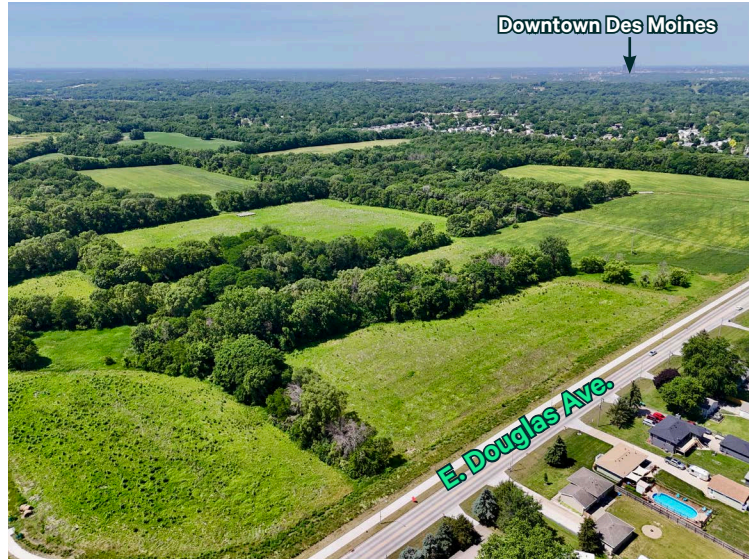
- + Available Acres
 - 167 Acres
- + Sale Price
 - Contact listing agent
- + Preliminary plat approved by City of Des Moines
- + Southeast Polk School District
- + Zoned N2B and NX2 Neighborhood Districts
- + 5 minutes to Hwy 6, Hwy 65, Outlets of Des Moines & 15 minutes to Downtown Des Moines & Ankeny



Development Land

East Douglas Avenue, Des Moines, Iowa

For Sale



Demographics

	.5-Mile	1-Mile	3-Mile
Annual Population Growth	1.55%	1.57%	1.34%
Average Household Income	\$98,191	\$87,192	\$88,371
Average Home Values	\$275,122	\$247,097	\$243,355

Development Land

East Douglas Avenue, Des Moines, Iowa

For Sale

Location



Contact Us

Jeff Spence, CCIM

Vice President

+1 515 415 6102

jeff.spence@cbre.com

Licensed in the State of Iowa

© 2025 CBRE, Inc. All rights reserved. This information has been obtained from sources believed reliable, but has not been verified for accuracy or completeness. You should conduct a careful, independent investigation of the property and verify all information. Any reliance on this information is solely at your own risk. CBRE and the CBRE logo are service marks of CBRE, Inc. All other marks displayed on this document are the property of their respective owners, and the use of such logos does not imply any affiliation with or endorsement of CBRE. Photos herein are the property of their respective owners. Use of these images without the express written consent of the owner is prohibited.