

120 NE 9th Ave

120 NE 9th Ave, Portland, OR 97232



Mike Maloney

Soldera Properties, Inc.

4260 Galewood St, Lake Oswego, OR 97035

mikem@solderaproperties.com

(503) 539-8312

120 NE 9th Ave

\$15.00 /SF/Yr

Centrally located multi-use building that has it all. Warehouse, office space with privates, retail/showroom/reception space, plus a bonus 3,100 square foot mezzanine for additional storage or could be built out for office/other use. Building is in great condition and features 19-foot ceilings, grade level 12' roll-up door, 10 off-street parking spaces. Second story offers views of Downtown Portland. Walk to shops, restaurants, and public transit....



Rental Rate:	\$15.00 /SF/Yr
Property Type:	Industrial
Property Subtype:	Warehouse
Rentable Building Area:	8,625 SF
Year Built:	1993
Cross Streets:	ne couch street
Rental Rate Mo:	\$1.25 USD/SF/Mo

1st Floor

Space Available	8,625 SF
Rental Rate	\$15.00 /SF/Yr
Date Available	October 01, 2020
Service Type	Triple Net (NNN)
Office Size	3,102 SF
Space Type	Relet
Space Use	Flex
Lease Term	Negotiable

Centrally located multi-use building that has it all. Warehouse, office space with privates, retail/showroom/reception space, plus a bonus 3,100 square foot mezzanine for additional storage or could be built out for office/other use. Building is in great condition and features 19-foot ceilings, grade level 12' roll-up door, 10 off-street parking spaces. Second story offers views of Downtown Portland. Walk to shops, restaurants, and public transit.

Major Tenant Information

Tenant	SF Occupied	Lease Expired
Veritiv	8,625	



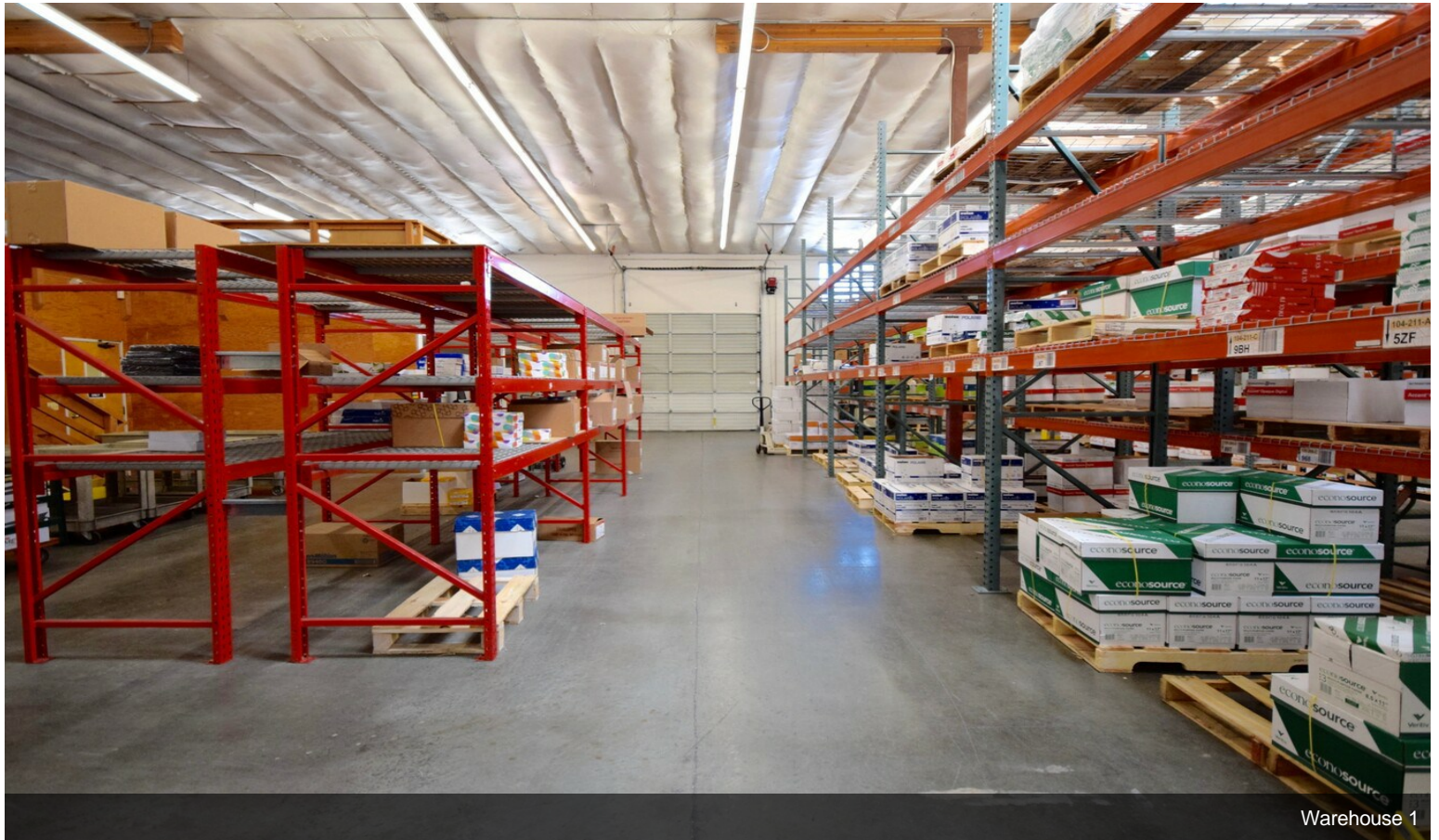
120 NE 9th Ave, Portland, OR 97232

Centrally located multi-use building that has it all. Warehouse, office space with privates, retail/showroom/reception space, plus a bonus 3,100 square foot mezzanine for additional storage or could be built out for office/other use. Building is in great condition and features 19-foot ceilings, grade level 12' roll-up door, 10 off-street parking spaces. Second story offers views of Downtown Portland. Walk to shops, restaurants, and public transit.

Property Photos



Warehouse 3

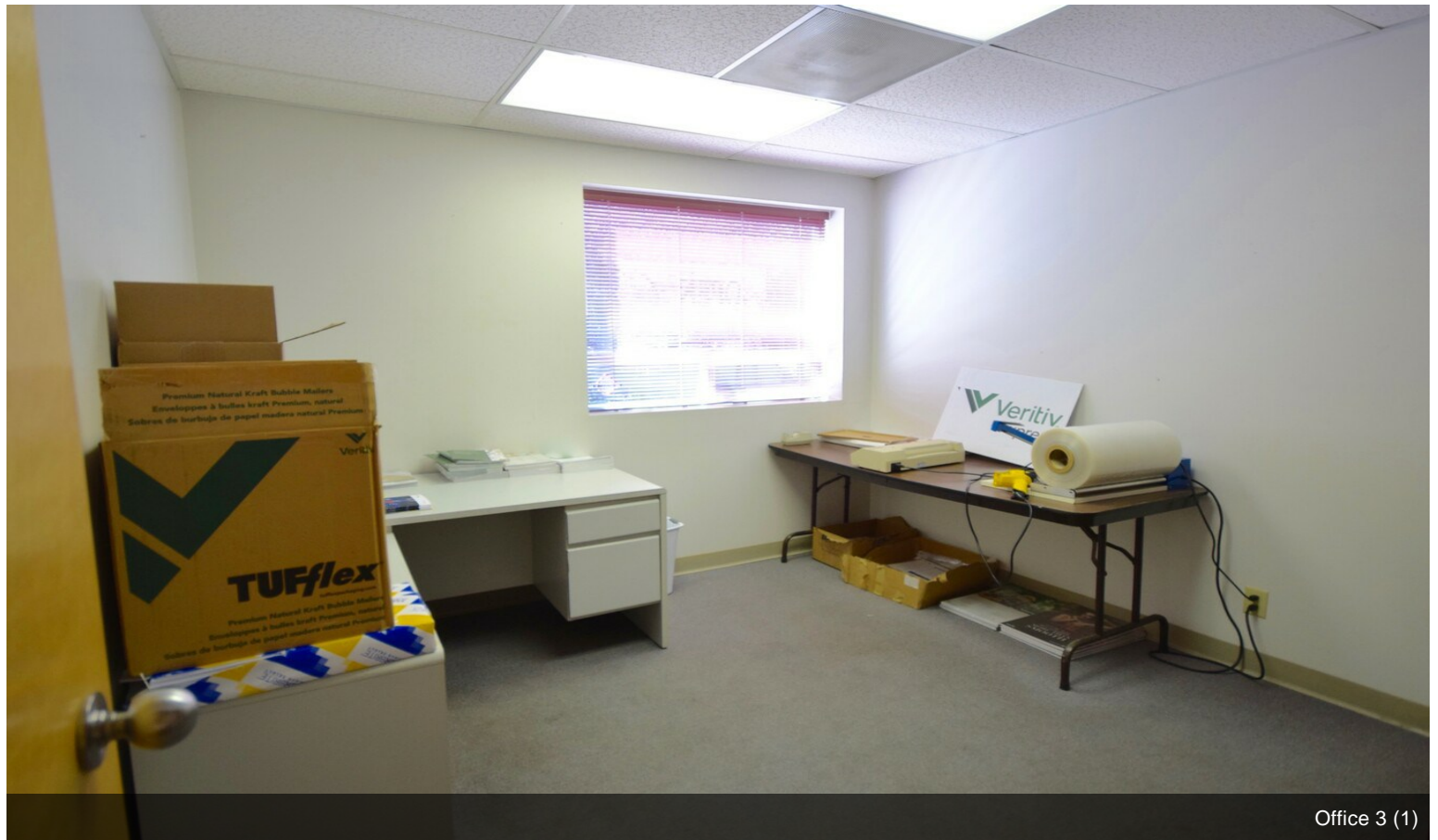


Warehouse 1

Property Photos



Office 4

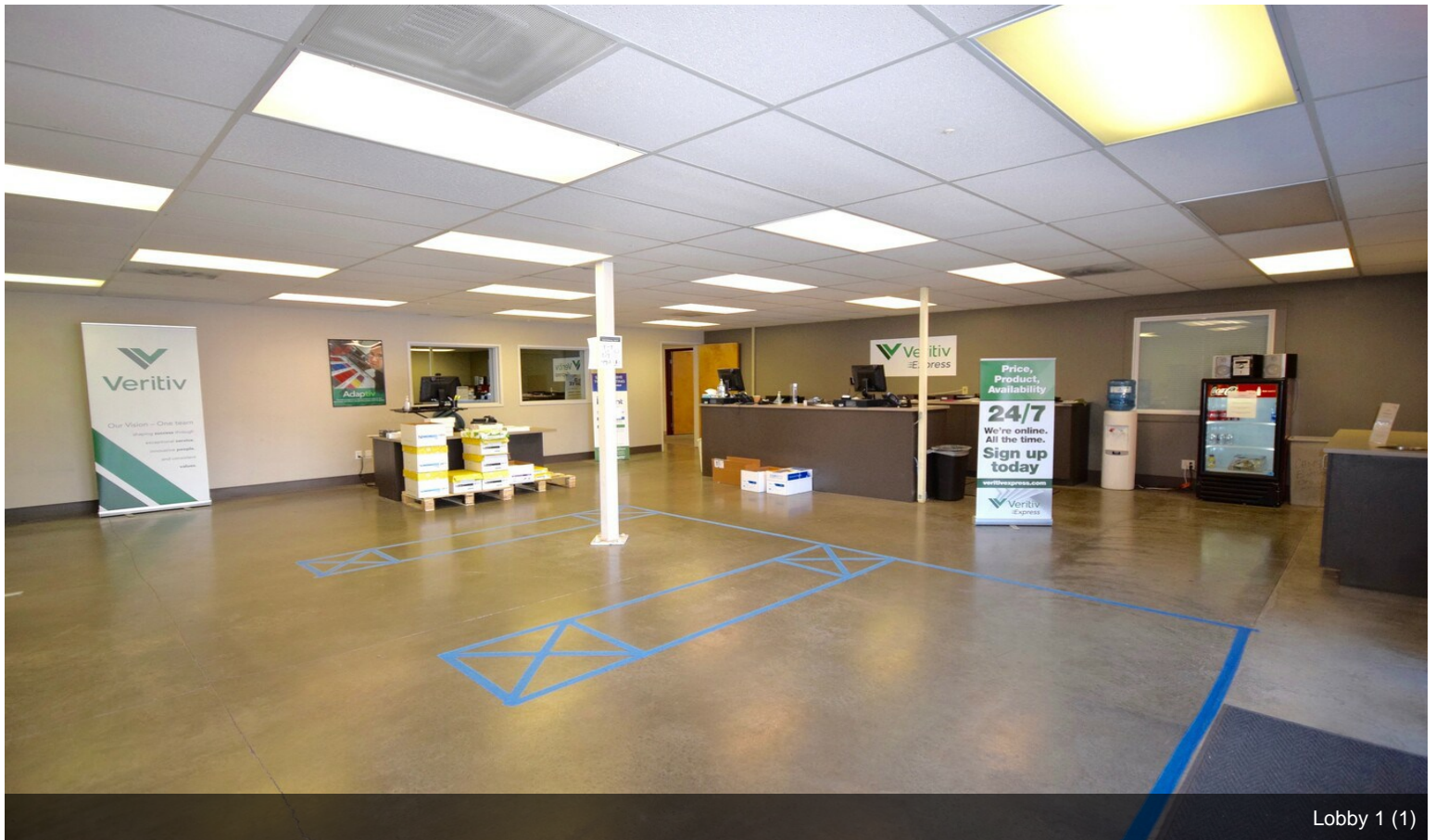


Office 3 (1)

Property Photos

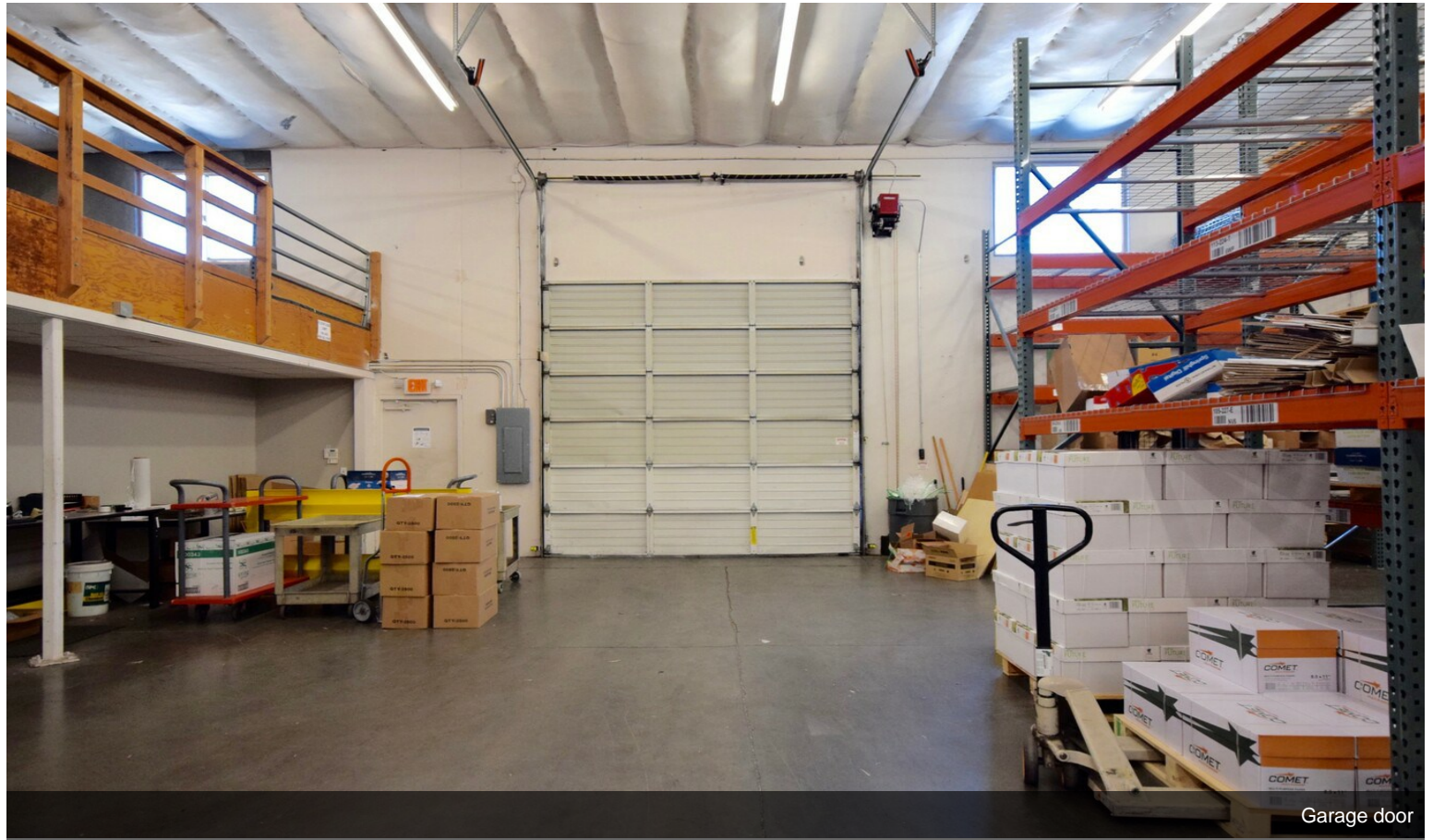


Mezz 2

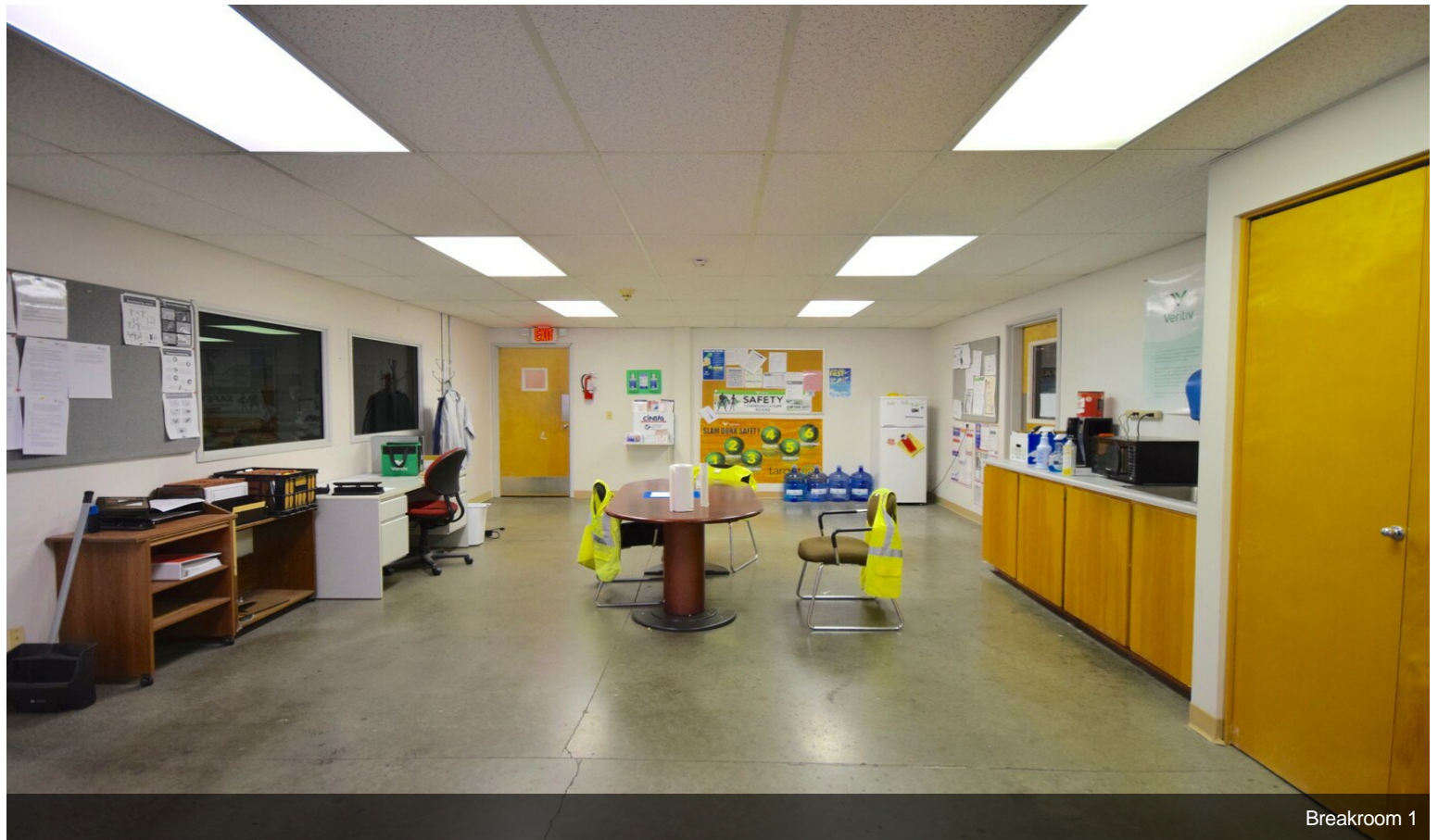


Lobby 1 (1)

Property Photos



Garage door



Breakroom 1

Property Photos

