

# CHARLES A. VON STEIN, INC.

*Commercial Property Management, Sales and Leasing Specialists Since 1963*

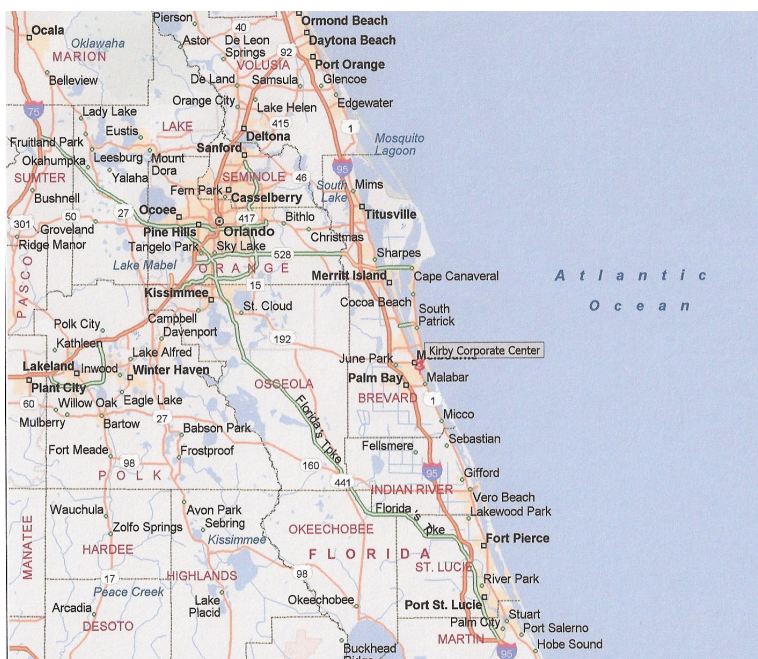
## BUILDING FACTS

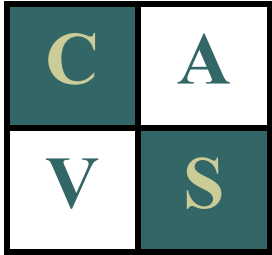
<b>Building Sq. Ft.</b>	<b>100,000</b>
<b>Ceiling Height</b>	<b>25 Feet</b>
<b>Warehouse</b>	
<b>Acoustical Ceiling Height</b>	<b>8-12 Feet</b>
<b>Number of Units</b>	<b>7 in Building of Various Sizes</b>
<b>Overhead Doors</b>	<b>Each Unit Minimum of one Overhead Door</b>
<b>Parking</b>	<b>180 Spaces</b>
<b>Construction</b>	<b>Metal Building</b>
<b>Roof</b>	<b>Metal</b>
<b>Utilities</b>	<b>City Water &amp; Sewer</b>
<b>Power</b>	<b>277/480 Volt 3 Phase Power</b>
<b>Zoning</b>	<b>LI-Light Industrial</b>
<b>Year Built</b>	<b>1978</b>
<b>Land Size</b>	<b>6.01 Acres</b>
<b>Property Type</b>	<b>Office/ Engineering/ Warehouse</b>
<b>Air Conditioning</b>	<b>Yes</b>
<b>Building Height</b>	<b>1 story</b>
<b>Other Tenants In Building</b>	<b>UPS</b>

**CHARLES A. VON STEIN, INC.**  
**626 Old Dixie Highway SW**  
**Vero Beach, Florida 32962**  
**Phone: 772-778-4885**  
**Fax: 772-778-4908**  
**Email: kirk@vscre.com**

## SPACE FOR LEASE

**KIRBY CORPORATE CENTER**  
**2730 KIRBY CIRCLE**  
**PALM BAY, FLORIDA 32905**





# CHARLES A. VON STEIN, INC.

COMMERCIAL PROPERTY MANAGEMENT, SALES AND LEASING SPECIALISTS SINCE 1963

**UNITS FOR LEASE**  
2730 KIRBY CIRCLE  
PALM BAY, FLORIDA 32905

Unit #	Square Footage	Rental Rate	Monthly Payment	Potential Space Configurations and Uses
6	14,500	\$8.00	\$9,666.67	FULLY AIR CONDITIONED OFFICE/HIGH BAY WAREHOUSE SPACE

CHARLES A. VON STEIN, INC.  
626 Old Dixie Highway SW  
Vero Beach, Florida 32962  
Phone: 772-778-4885  
Fax: 772-778-4908  
Email: [kirk@vscre.com](mailto:kirk@vscre.com)

KIRBY CORPORATE CENTER  
PALM BAY, FLORIDA  
FLOOR PLANS

KIRBY CORPORATE CENTER  
2730 KIRBY CIRCLE  
PALM BAY, FLORIDA 32905

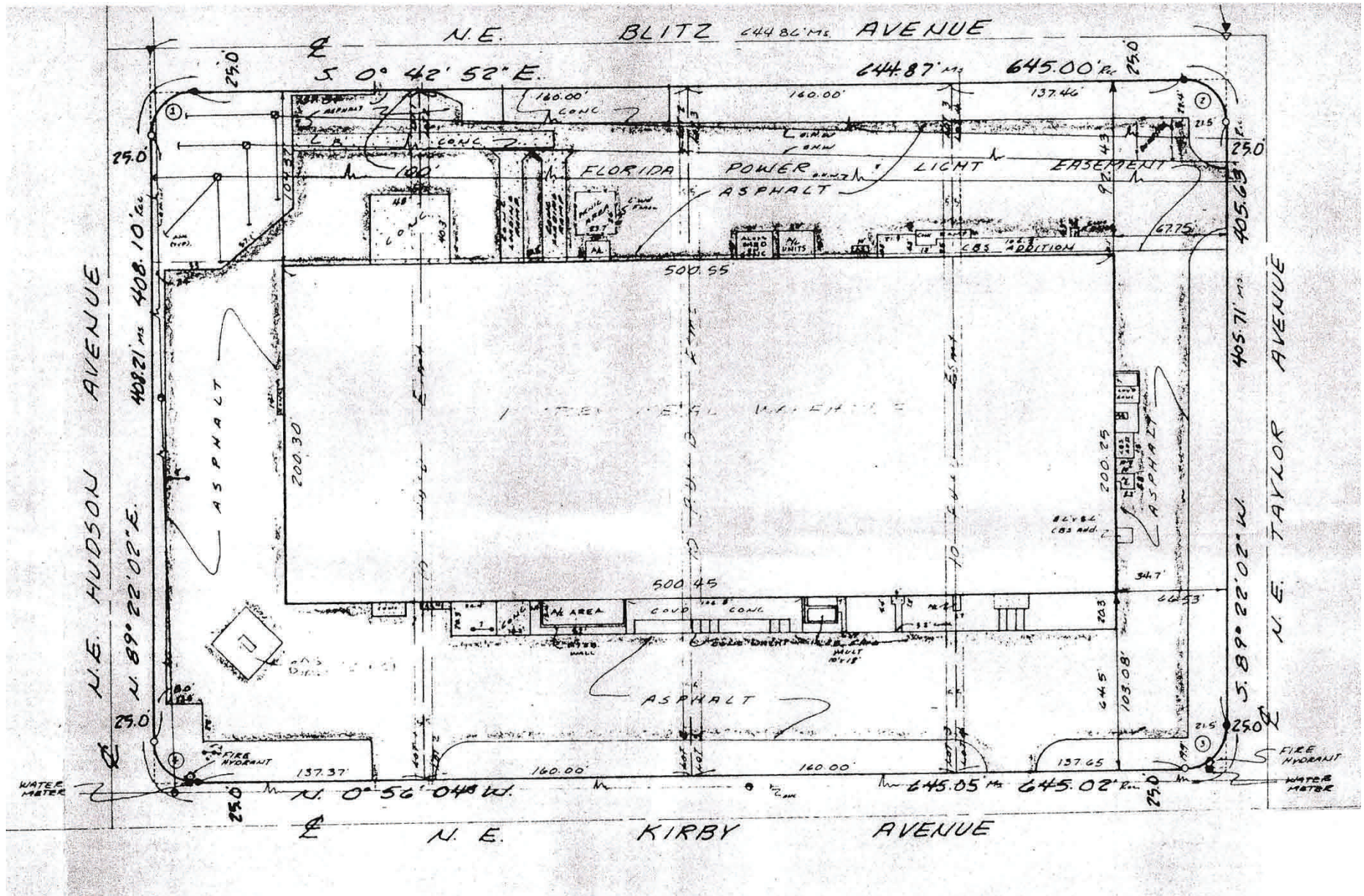
Rear (East)



Front (West)

ALL INFORMATION FURNISHED REGARDING PROPERTY FOR SALE, RENTAL OR FINANCING SOURCES DEEMED RELIABLE, BUT NO WARRANTY OR REPRESENTATION IS MADE AS TO THE ACCURACY THEREOF AND SAME IS SUBMITTED SUBJECT TO ERRORS, OMISSIONS, CHANGE OF PRICE, RENTAL OR OTHER CONDITIONS, PRIOR SALE, LEASING OR FINANCING OR WITHDRAWAL WITHOUT NOTICE.

KIRBY CORPORATE CENTER  
PALM BAY, FLORIDA  
SURVEY



ALL INFORMATION FURNISHED REGARDING PROPERTY FOR SALE, RENTAL OR FINANCING SOURCES DEEMED RELIABLE, BUT NO WARRANTY OR REPRESENTATION IS MADE AS TO THE ACCURACY THEREOF AND SAME IS SUBMITTED SUBJECT TO ERRORS, OMISSIONS, CHANGE OF PRICE, RENTAL OR OTHER CONDITIONS, PRIOR SALE, LEASING OR FINANCING OR WITHDRAWAL WITHOUT NOTICE.

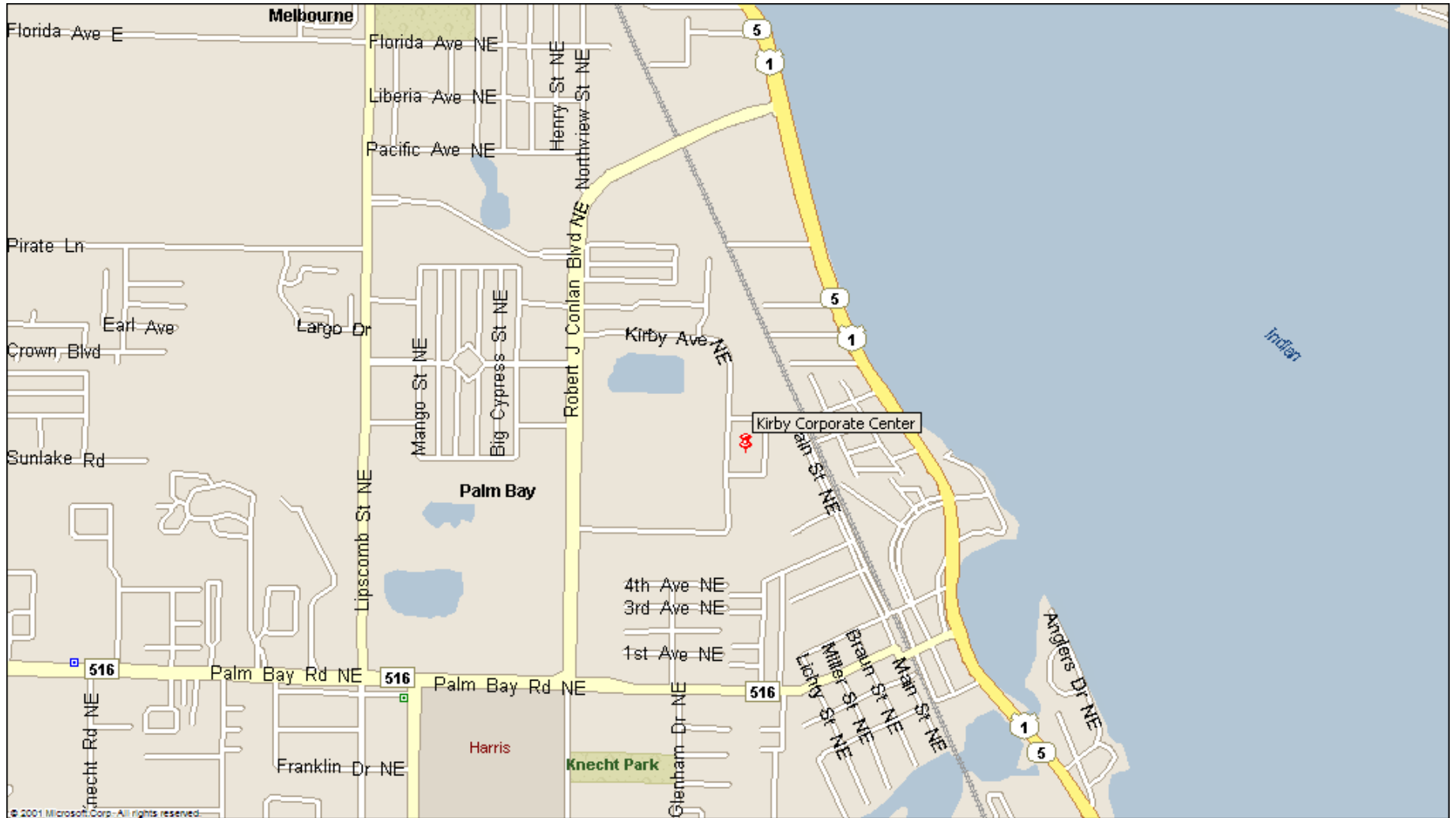
**KIRBY CORPORATE CENTER  
PALM BAY, FLORIDA  
AERIAL**



**ALL INFORMATION FURNISHED REGARDING PROPERTY FOR SALE, RENTAL OR FINANCING SOURCES DEEMED RELIABLE, BUT NO WARRANTY OR REPRESENTATION IS MADE AS TO THE ACCURACY THEREOF AND SAME IS SUBMITTED SUBJECT TO ERRORS, OMISSIONS, CHANGE OF PRICE, RENTAL OR OTHER CONDITIONS, PRIOR SALE, LEASING OR FINANCING OR WITHDRAWAL WITHOUT NOTICE.**

# Kirby Corporate Center, 2730 Kirby Circle, Palm Bay, Florida 32905

## Location Map



# Kirby Corporate Center, 2730 Kirby Circle, Palm Bay, Florida 32905

## Location Map

