



2975 SYMMES RD.

FAIRFIELD, OH 45014

AVAILABLE FOR LEASE

Rod MacEachen
(513) 675-5764
Rod@SqFtCommercial.com

Roddy MacEachen, SIOR
(513) 739-3985
Roddy@SqFtCommercial.com

Jared Wagoner, SIOR
(812) 890-1768
Jared@SqFtCommercial.com

Amy Castaneda
(503) 310-9768
Amy@SqFtCommercial.com

Sarah Kern
(513) 426-4864
Sarah@SqFtCommercial.com

© 2026 SqFt Commercial LLC. All rights reserved. No warranty or representation, express or implied, is made to the accuracy or completeness of the information contained herein, and same is submitted subject to errors, omissions, change of price, rental or other conditions, withdrawal without notice, and to any special listing conditions imposed by the property owner(s). As applicable, we make no representation as to the condition of the property (or properties) in question. This information has been obtained from sources believed reliable, but has not been verified for accuracy or completeness. You should conduct a careful, independent investigation of the property and verify all information. Any reliance on this information is solely at your own risk. SqFt Commercial and the SqFt Commercial logo are service marks of SqFt Commercial, Inc. All other marks displayed on this document are the property of their respective owners. Photos herein are the property of their respective owners. Use of these images without the express written consent of the owner is prohibited.

2975 SYMMES RD.

FAIRFIELD, OH 45014

INFO@SQFTCOMMERCIAL.COM
(513) 843-1600
SQFTCOMMERCIAL.COM



PROPERTY HIGHLIGHTS

10,500 SqFt

- Located in City of Fairfield minutes to I-75, I-275, and SR-129
- New ownership and make-ready remodel underway with JTF Construction, Inc. – <https://www.jtfconstruction.com/>
- Four (4) drive-in doors (12'x14') and One (1) dock door with additional to suit
- Approximately +/- 3 acres of surplus parking or outdoor storage
- Zoning: City of Fairfield – M-2
- Available for immediate occupancy
- Lease Rate: \$20,000/month NNN

 [CLICK HERE FOR AERIAL VIDEO](#)

PROPERTY DETAILS

Total SqFt:	10,500
Warehouse SqFt:	9,000 (150'x60')
Office SqFt:	1,500 (30'x50')
Acreage:	4.00 acres
Clear Height:	12'-15'
Year Built:	1980
Type Construction:	Pre-engineered metal building, fully insulated
Lighting:	LED's
Column Spacing:	Clear span
Dock door:	One (1) 8'x10'
Drive-in door:	Four (4) - 12'x14' with drive through capability
Sprinkler:	None
Electric:	120-volt, single phase, 200 amps
Heat:	Natural gas-fired unit heaters
Roof:	Metal
Parking Lot:	3+ acres of parking and outdoor storage area
Restrooms:	One (1) in office and one (1) in warehouse
Butler County Parcel ID's:	A0700006000146 and A0700006000146T

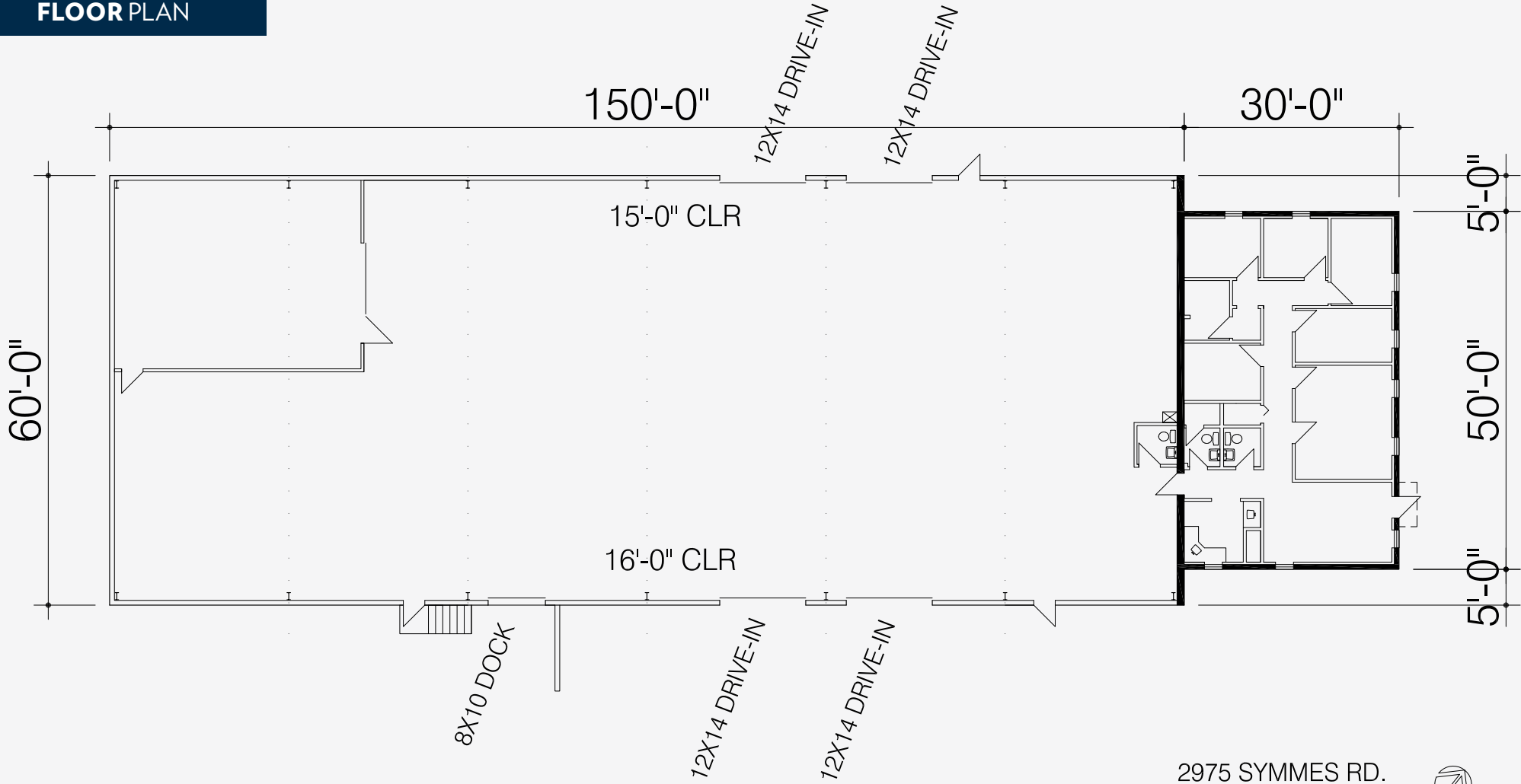
2975 SYMMES RD.

FAIRFIELD, OH 45014

INFO@SQFTCOMMERCIAL.COM
 (513) 843-1600
 SQFTCOMMERCIAL.COM



FLOOR PLAN



2975 SYMMES RD.
 FAIRFIELD, OH 45014



OFFICE	1,500 SF
WAREHOUSE	9,000 SF
TOTAL	10,500 SF

DRAWING ISSUED FOR MARKETING PURPOSES ONLY. ALL CALCULATIONS ARE APPROXIMATE.

2975 SYMMES RD.

FAIRFIELD, OH 45014

INFO@SQFTCOMMERCIAL.COM
(513) 843-1600
SQFTCOMMERCIAL.COM



PARCEL OUTLINE



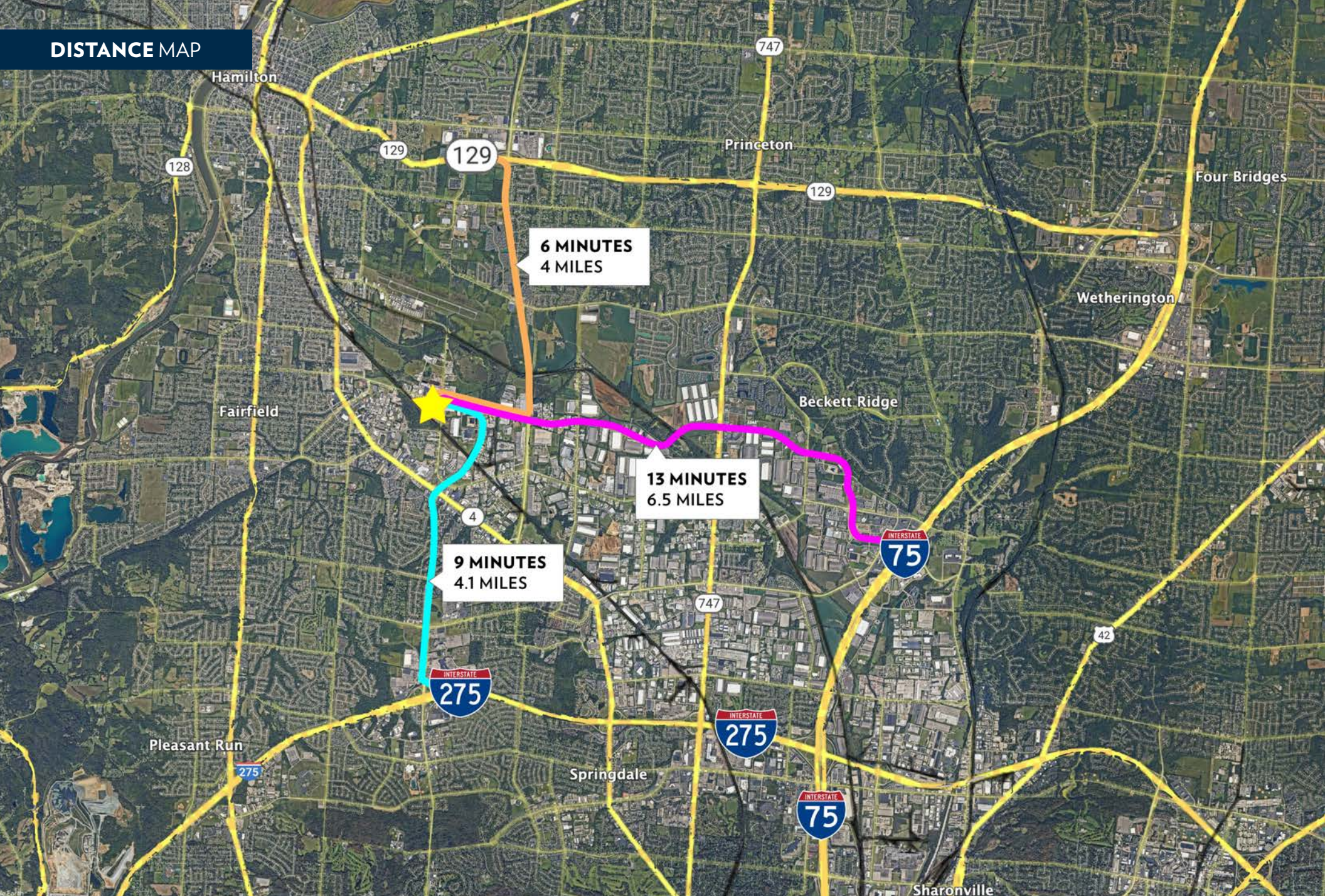
2975 SYMMES RD.

FAIRFIELD, OH 45014

INFO@SQFTCOMMERCIAL.COM
(513) 843-1600
SQFTCOMMERCIAL.COM



DISTANCE MAP



2975 SYMMES RD.

FAIRFIELD, OH 45014

INFO@SQFTCOMMERCIAL.COM
(513) 843-1600
SQFTCOMMERCIAL.COM

