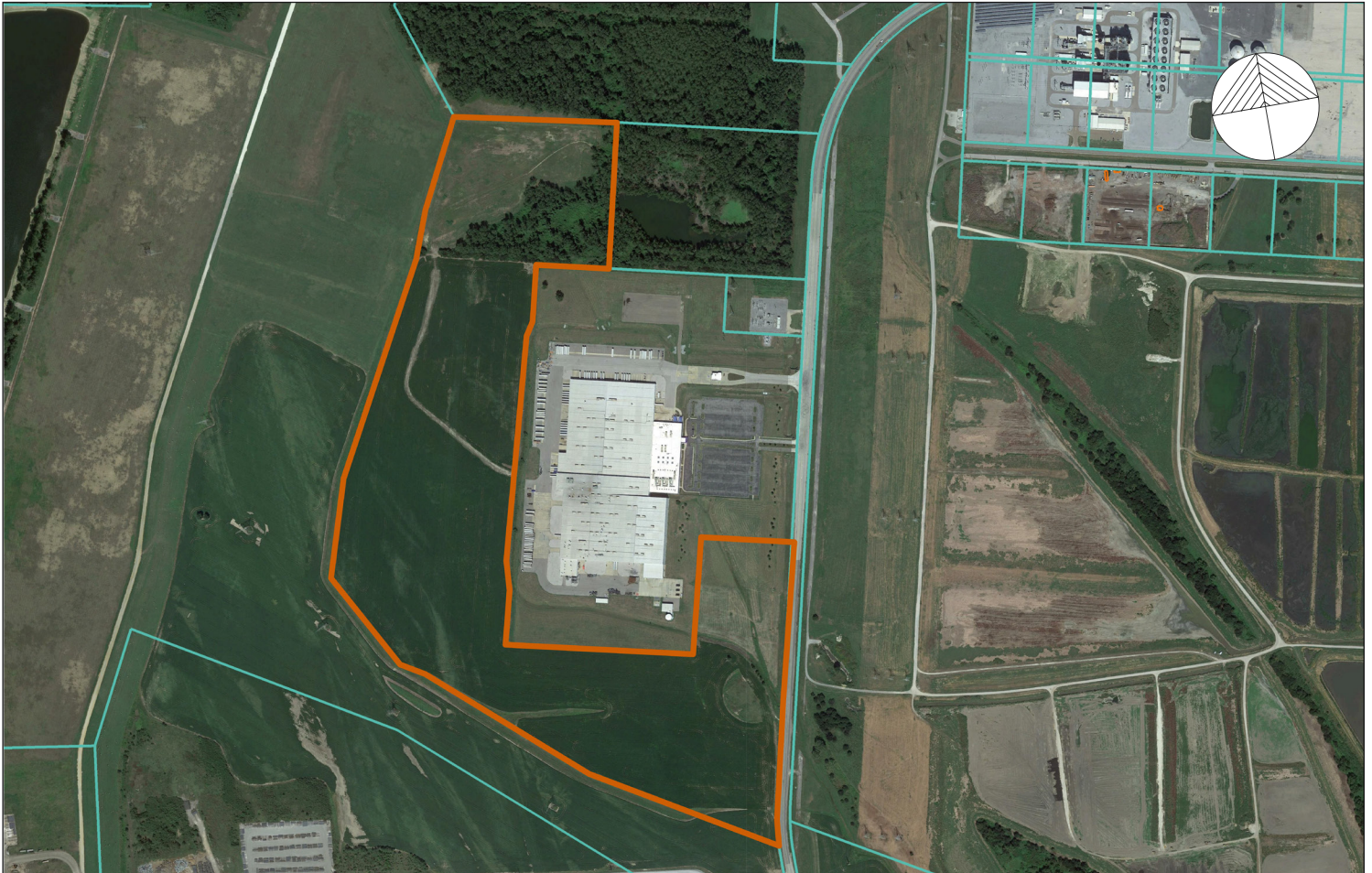


# LAND FOR LEASE

## 135.51-ACRE INDUSTRIAL PARK



**PHOENIX**  
INVESTORS  
*Opportunity. Execution. Value Creation.*



## 3231 PAUL R LOWRY RD | MEMPHIS, TN

### SITE SPECS

- 135.51 Total acres
- Parcel ID: 050101 00067
- Zoning: IH
- Topography: Flat
- Current use: Agricultural
- Frontage: Approximately 2,233' on Paul R Lowry Rd

### INFORMATION

- Adjacent to Nurcor Steel Plant
- Heavy power potential
- Adjacent to T.E. Maxson Wastewater Treatment Facility
- Across the street from TVA power station

**KURT JENSEN | 262-308-0008 | KURT@PHOENIXINVESTORS.COM**