

FOR SALE

815 S Stadium Dr

Ada, OK 74820

± 3.44 Acre Lot - Zoned R-1 / \$325,000



BRENT HOLLIDAY, MiCP
(405) 788-1708
brenth@kwcommercial.com

RACHEL NICHOLS
(405) 761-8438
rachelnichols@kwcommercial.com

Property Description

Exceptional \pm 3.44-acre parcel for multifamily or residential development, ideally located just 0.5 miles from East Central University in Ada, OK. This prime real estate offers an incredible opportunity for investors and developers. With its close proximity to the university and desirable residential area, this spacious lot provides the perfect canvas. Don't miss out on this prime location for a lucrative multifamily or residential development. Contact us today to seize this outstanding opportunity in Ada.



KW Commercial Elite
5629 N Classen Blvd, OKC, OK 73118
kwc-ok.com

815 S Stadium Dr Ada, OK 74820

Lot Size: \pm 3.44 Acre Lot

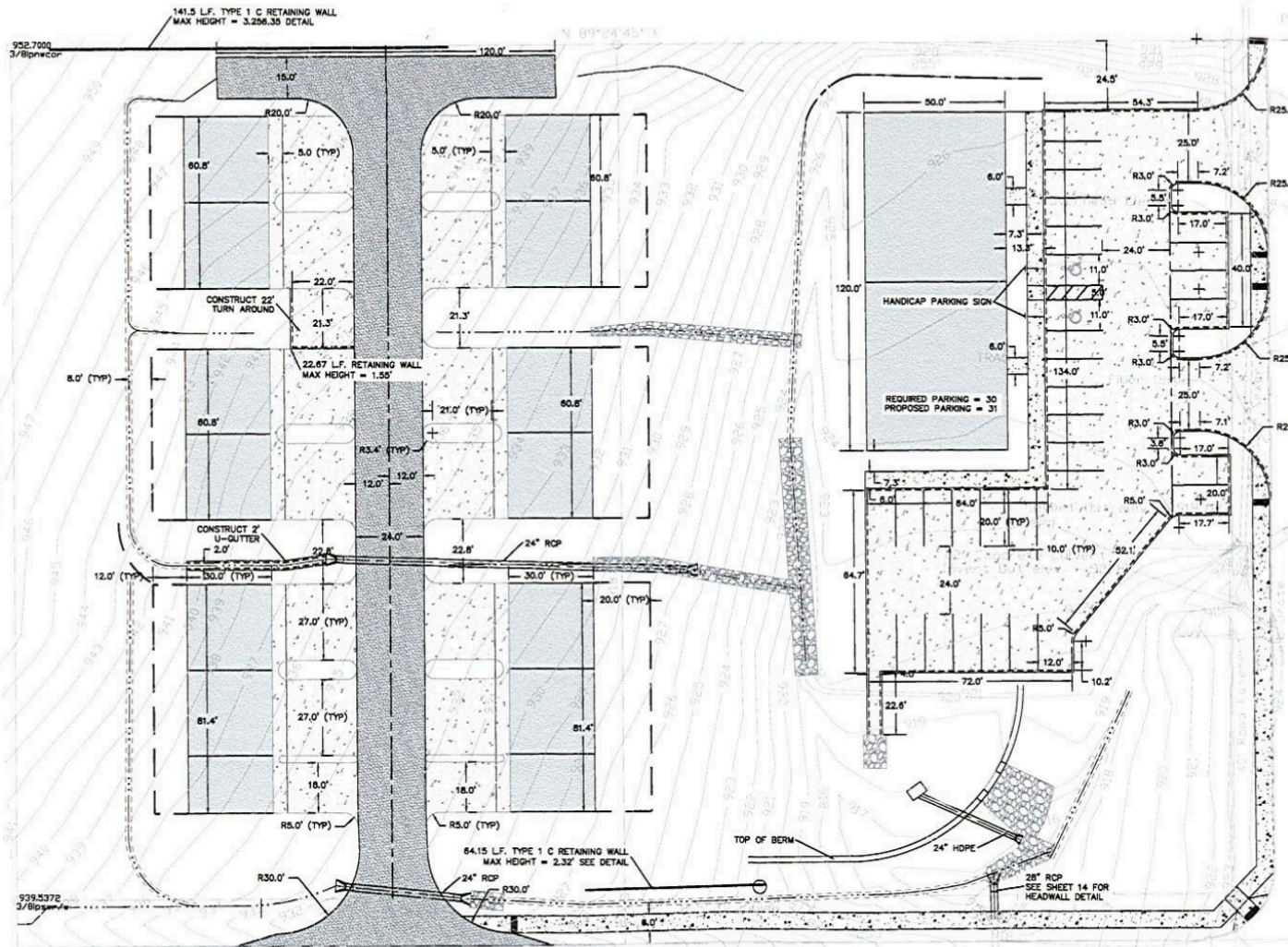
Zoning: R-1

Lot Dimensions: 470 ft x 319 ft

Price Per SF: \$2.17/ft

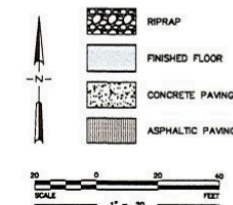
Sale Price: \$325,000





TOPOGRAPHIC LEGEND

- FIRE HYDRANT
- GROUND TRANSFORMER
- GUARD POST
- LIGHT POLE
- STORM DRAIN MANHOLE
- SANITARY SEWER MANHOLE
- TRANSFORMER POLE
- POWER POLE
- ELECTRIC RISER
- PROPERTY CORNER FOUND
- PROPERTY CORNER SET
- SANITARY SEWER CLEANOUT
- COMMERCIAL SIGN
- SIGN
- SPRINKLER HEAD
- SPRINKLER VALVE
- WATER METER
- WATER VALVE BOX
- ROOF DRAIN
- TELEPHONE RISER
- TELEPHONE VAULT
- CHAINLINK FENCE
- PIPERAIL FENCE
- STOCKADE FENCE
- SECURITY FENCE
- OVERHEAD ELECTRIC LINE
- UNDERGROUND ELECTRIC LINE
- SANITARY SEWER LINE
- STORM DRAIN LINE
- UNDERGROUND TELEPHONE LINE
- WATER LINE
- GROUND SURFACE CONTOUR
- CURB AND GUTTER
- SURFACE DRAINAGE FLOWLINE
- TOP OF CURB SPOT ELEVATION
- GUTTER SPOT ELEVATION
- SPOT ELEVATION
- CONCRETE
- ASPHALT
- MULCH
- RUBBER



REVISIONS

NO.	DESCRIPTION	DATE
1	ISSUED FOR PERMIT	05-21-2014

PROJECT NO. 12130
 DRAWN BY: DMH
 CHECKED BY: WMS
 DATE: 05.21.2014
 TITLE: NTS
 SCALE: 1" = 20'

3

CARDINAL
 ENGINEERING
 1015 N. Broadway Ave., Suite 300
 Oklahoma City, OK 73102
 Phone 405.842.1066
 Fax 405.843.4687
 3224 Bart Conner Drive
 Norman, OK 73072
 Phone 405.339.0655
 Fax 405.346.8540
<http://www.cardinalengineering.com>
 C.A.B. 2014, expiration 06/30/2012