



**Well
tower**

For Lease

Contact us:

Curt Allen

Associate Vice President
+1 916 563 3082
curt.allen@colliers.com
CA Lic. 01959536

Colliers Sacramento

301 University Avenue, Suite 100
Sacramento, CA 95825
P: +1 916 929 5999
colliers.com/sacramento

8120 Timberlake Way
Sacramento, CA

On-Campus Medical Office Building

Property Highlights

- » Suite 202 - ±3,115 RSF available
- » Suite 210 - ±1,038 RSF available
- » Adjacent to Methodist Hospital of Sacramento, a 281-bed general medical and surgical hospital operated by Dignity Health
- » Convenient access to Highway 99
- » Ample on-site free parking
- » Professionally managed
- » ±46,000 SF medical office building

Tenant Mix

- » Cardiology
- » Endoscopy
- » Pharmacy
- » Primary Care
- » Orthopedics
- » OB/GYN
- » Ophthalmology
- » Psychiatry

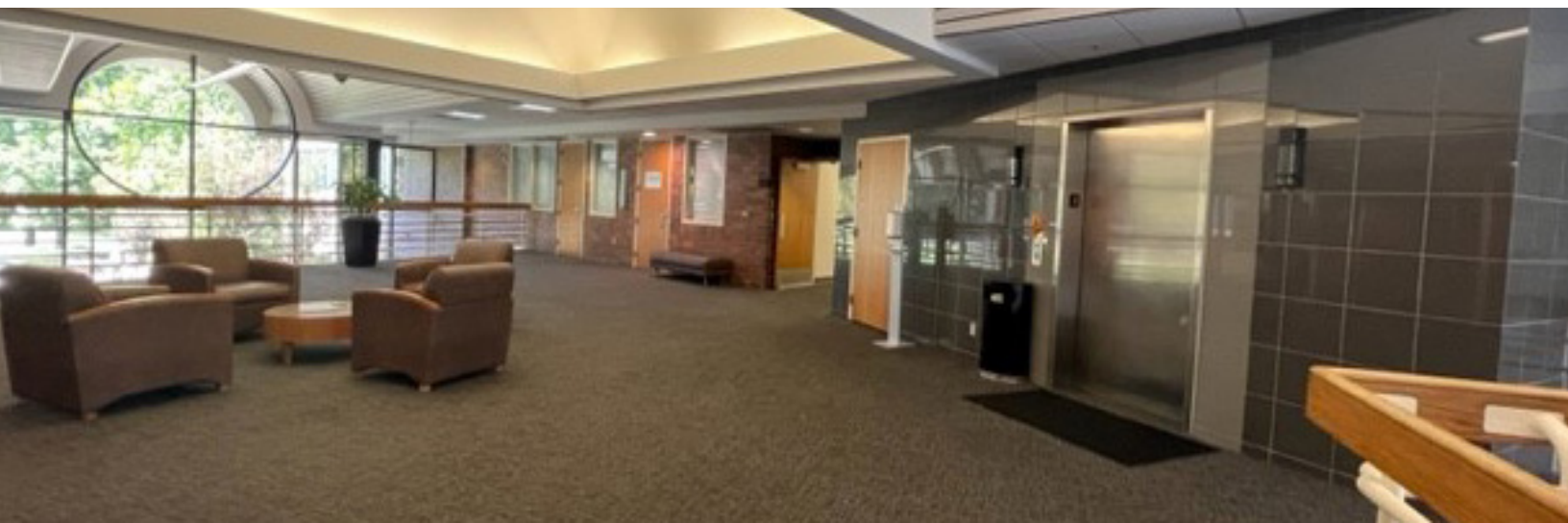
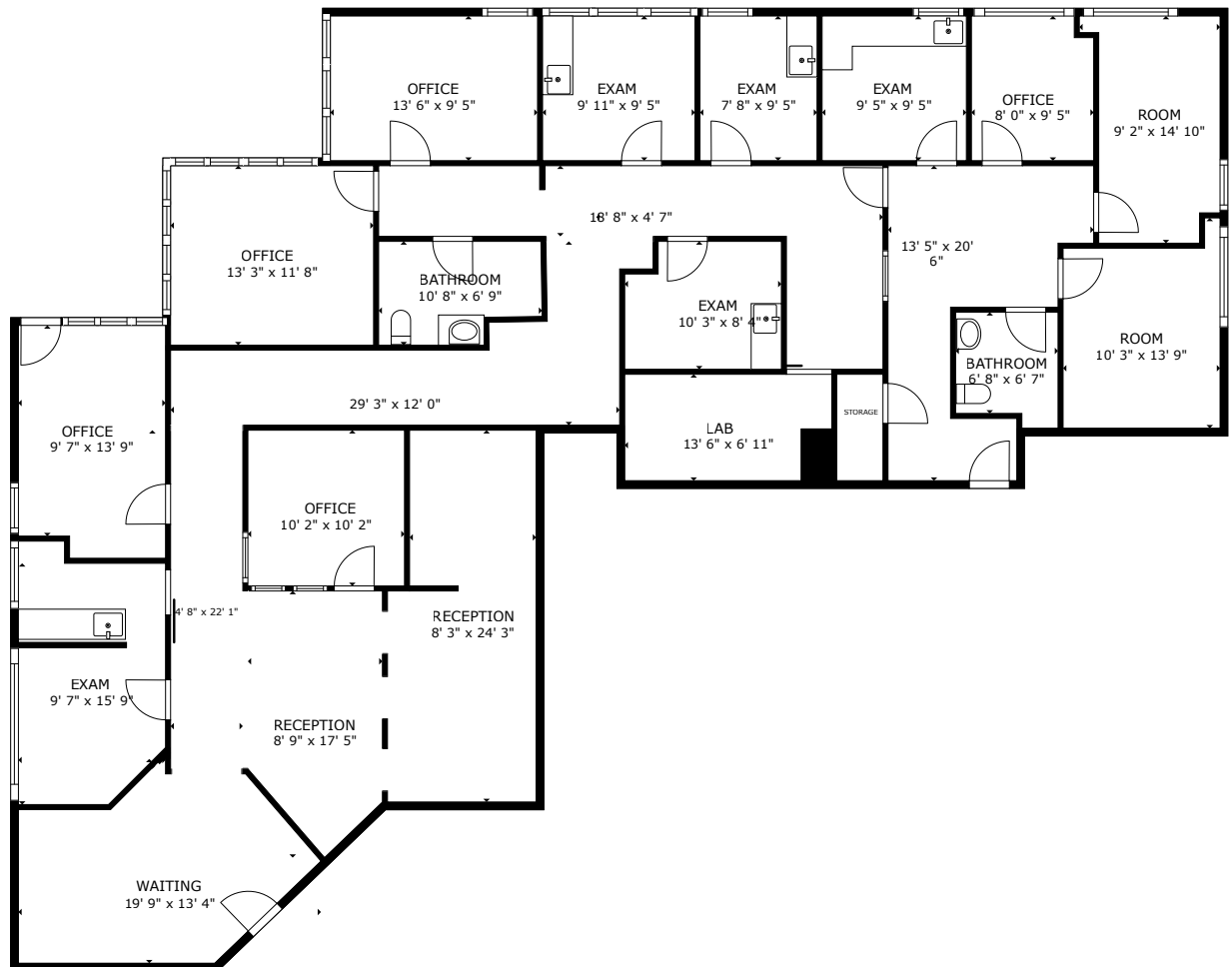
Floor Plan

Suite 202 | ±3,115 RSF

Lease Rate: \$2.55 per SF

Available Now

[View Virtual Tour](#)

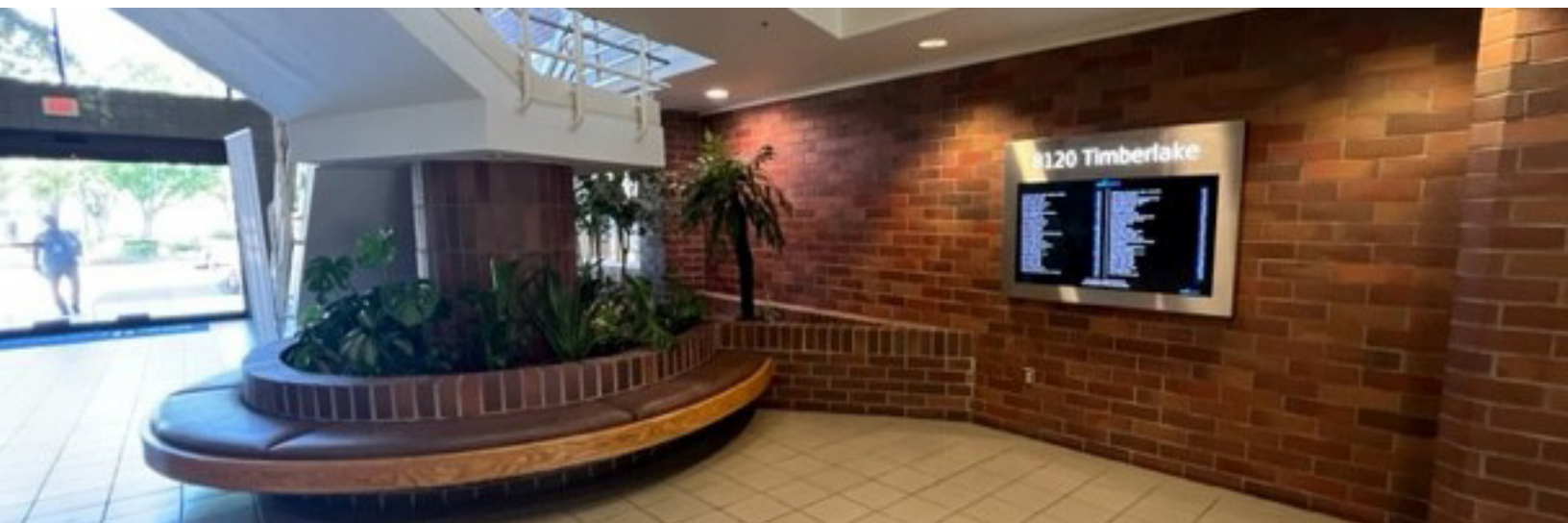
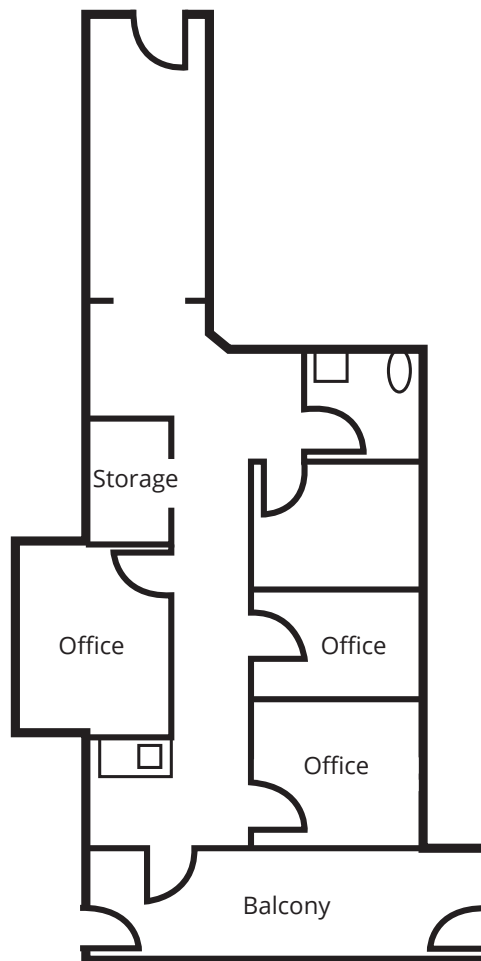


Floor Plan

Suite 210 B | ±1,038 RSF

Lease Rate: \$2.55 per SF

Available Now



Location Overview



Curt Allen

Associate Vice President
+1 916 563 3082
curt.allen@colliers.com
CA Lic. 01959536

This document/email has been prepared by Colliers for advertising and general information only. Colliers makes no guarantees, representations or warranties of any kind, expressed or implied, regarding the information including, but not limited to, warranties of content, accuracy and reliability. Any interested party should undertake their own inquiries as to the accuracy of the information. Colliers excludes unequivocally all inferred or implied terms, conditions and warranties arising out of this document and excludes all liability for loss and damages arising there from. This publication is the copyrighted property of Colliers and /or its licensor(s). © 2025. All rights reserved. This communication is not intended to cause or induce breach of an existing listing agreement.