



230

SOUTH MILL STREET

ASPEN, CO



Downtown core prime location on Mill Street.

3 private offices, reception area, kitchenette, bathroom with shower, high ceilings, lots of windows, views.

Base Rent for the 1,191 SF Upper-Level space is \$100 per SF = \$9,925 per month. Plus approximately \$19 per SF for CAMs (taxes, insurance, maintenance, utilities, management, etc.) Total Gross Rent is approx. \$11,811 per month, plus tenant pays separate electric. Available Dec 1, 2024

S&B

SETTERFIELD & BRIGHT

457 E HOPKINS AVENUE, ASPEN, CO 81611

970-920-1833

WWW.ASPENREAL.COM



Building Information:

SPACE SIZE: 1,191 SF

YEAR BUILT: 1980

ZONING: Commercial Core

TYPE OF LEASE: NNN

Lease Information:

BASE RENT: \$100 per SF

TOTAL GROSS RENT: \$11,811 per month

SECURITY DEPOSIT: \$25,000

AVAILABLE: Dec 1, 2024



230

SOUTH MILL STREET
ASPEN, CO

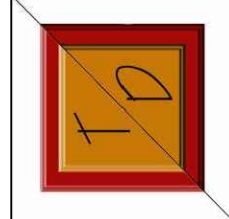


230

SOUTH MILL STREET
ASPEN, CO



THE INFORMATION CONTAINED HEREIN IS DEEMED TO BE RELIABLE.
THE READER IS ADVISED TO CONDUCT INDEPENDENT INVESTIGATIONS TO DETERMINE RELIABILITY AND ACCURACY.



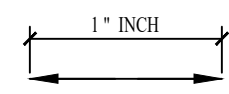
DRAWING BY
THE DIMENSIONS
 ARCHITECTURE
 ASPEN, CO 81611 · PH: 970.926.1111
 WWW.THEDIMENSIONS.COM

DISCLAIMER
 THESE DRAWINGS ARE THE PROPERTY
 & COPYRIGHT OF THE DIMENSIONS
 ARCHITECTURE. THEY SHALL NOT BE USED
 ON ANY OTHER WORK NOR BE USED
 BY ANY OTHER PERSON FOR ANY USE
 WHATSOEVER WITHOUT WRITTEN
 PERMISSION.

228 SOUTH MILL STREET
 ASPEN, CO 81611

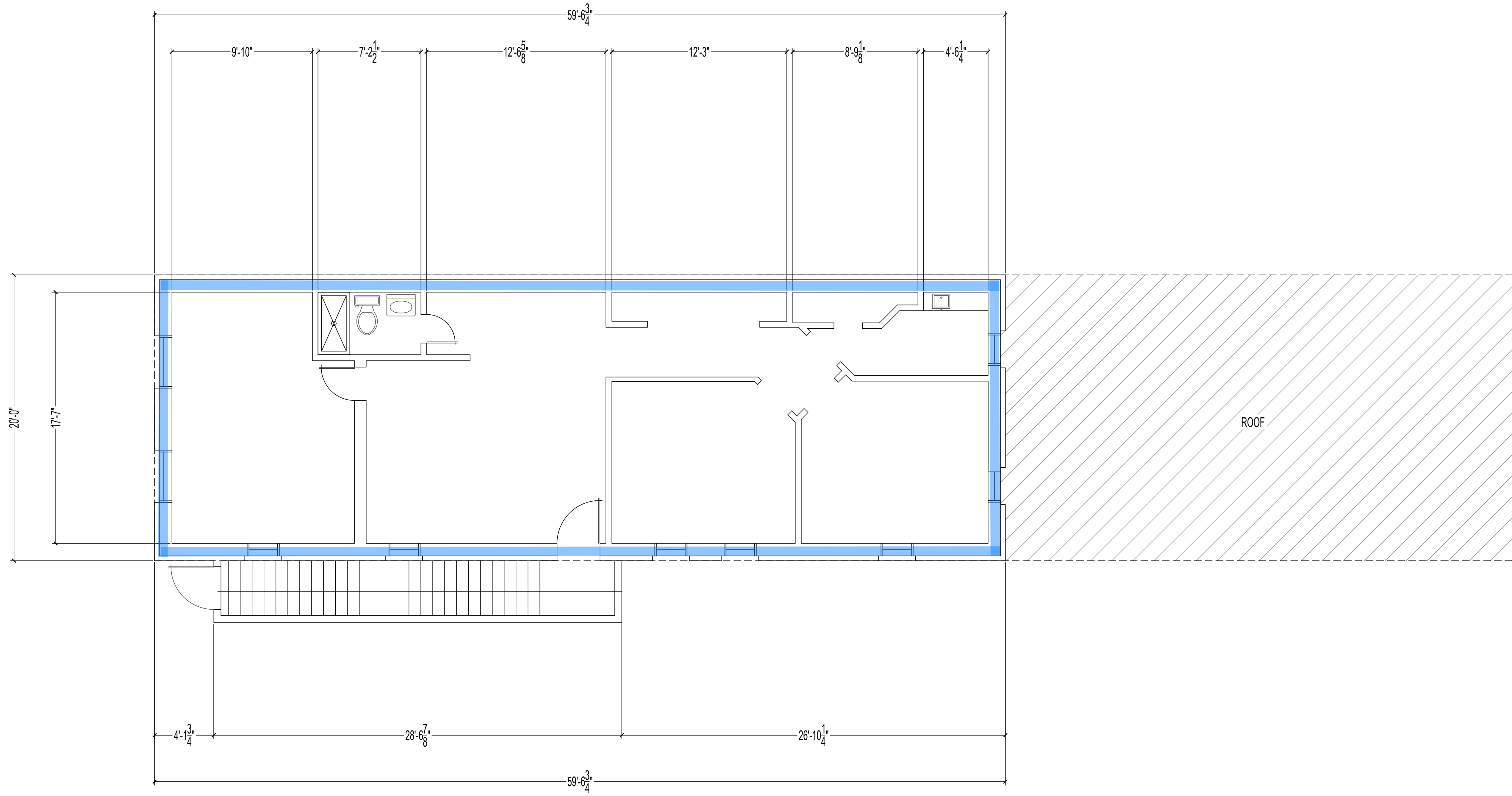
NOTES
 AS BUILTS
 12/03/2020
 12/08/2020

SCALE
 1/4" = 1'



THESE DRAWINGS ARE PRODUCED IN
 2" SCALE. IF THIS ABOVE DIMENSION
 DOES NOT MEASURE WITH A TOLERANCE
 OF ONE INCH (1"), THEN THESE DRAWINGS
 HAVE BEEN ENLARGED OR REDUCED
 THEREFORE AFFECTING THE LABELLED
 SCALE.

PAGE NO.
 A - 1



① EXISTING UPPER LEVEL FLOOR PLAN
 1,191 SQ. FT. / STAIRS 124 SQ. FT. / 5,024 BLDG. TOTAL

