

SPRINGBROOK DRIVE OFFICE

215 East Springbrook Drive
Johnson City, TN 37601

Location

East Springbrook Drive in North Johnson City
Between North Roan Street & Oakland Avenue

Available for Lease

Suite 1: 1,867 SF office
\$13/SF/year NNN

Highlights

4 offices
2 large offices/conference rooms
Break area
Large training room
Common lobby and restrooms
Ample parking
Proximal to North Roan Street major retail/dining corridor
Less than one mile from I-26, exit 20
Zoned B-4, Planned Arterial Business District

Traffic Counts

N Roan Street: 20,498 (2022)
E Oakland Avenue: 10,653 (2022)

Demographics

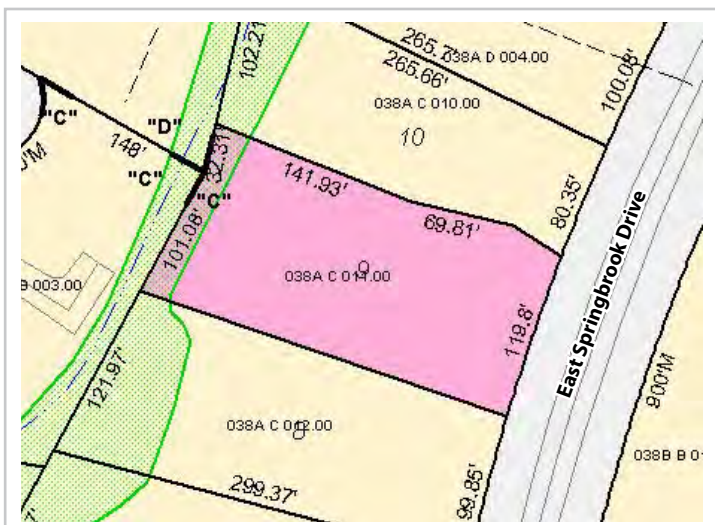
(2025 Est.)	3 mile	5 mile	10 mile
Population	37,269	83,886	172,584
Median HH Income	\$62,287	\$59,105	\$63,436
Median Age	42.5	38.1	41.8

Contact

John Speropulos, CCIM, SIOR
john@mitchcox.com

Marc Murphy, CCIM
mmurphy@mitchcox.com

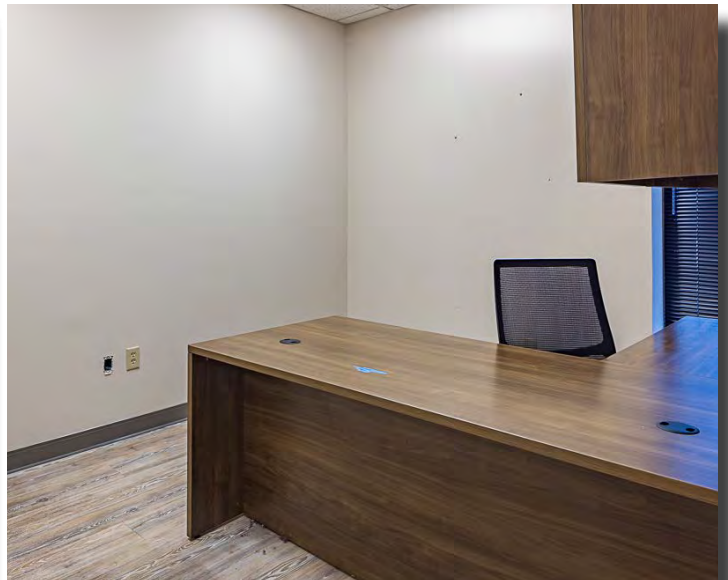
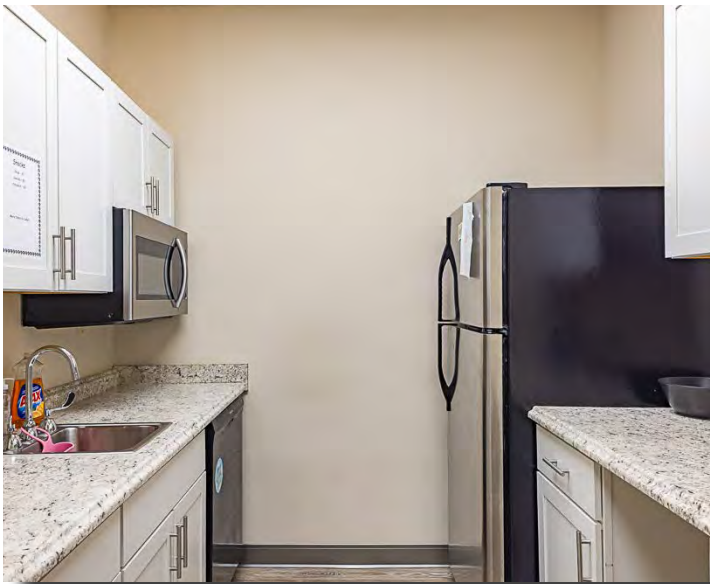
📞 423-282-6582 | 📠 423-282-5903
www.mitchcox.com



MITCH COX
REALTOR, INC.



Subject



MITCH COX
REALTOR, INC.

2304 Silverdale Drive, Suite 200, Johnson City, TN 37601
423-282-6582 (o) 423-282-5903 (f) www.mitchcox.com