

MEDICAL OFFICE SPACE FOR LEASE

OWNED & MANAGED BY:

welltower

4%
PROCURING FEE
TO TENANT'S
BROKER

Elm Street

343 ELM STREET, RENO, NV 89503



CBRE

Elm Street

343 ELM STREET, RENO, NV 89503



LOCATION

Located **on the campus of St. Mary's Regional Medical Center** in Reno, Nevada.

Click here for more information:
<https://medicaloffice.welltower.com/reno>



PROPERTY HIGHLIGHTS



Connected to hospital via underground tunnel and attached to a complimentary 4-level parking garage



Surgery Center of Reno located on premises



Convenient access off I-80 and close to downtown Reno



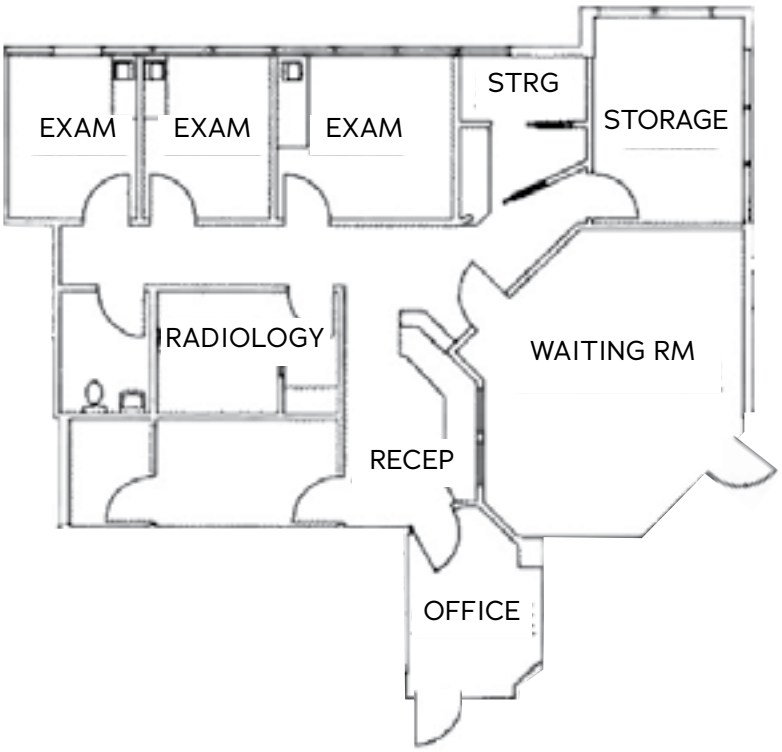
On-site maintenance personnel



On campus of St. Mary's Regional Medical Center

AVAILABLE SPACE

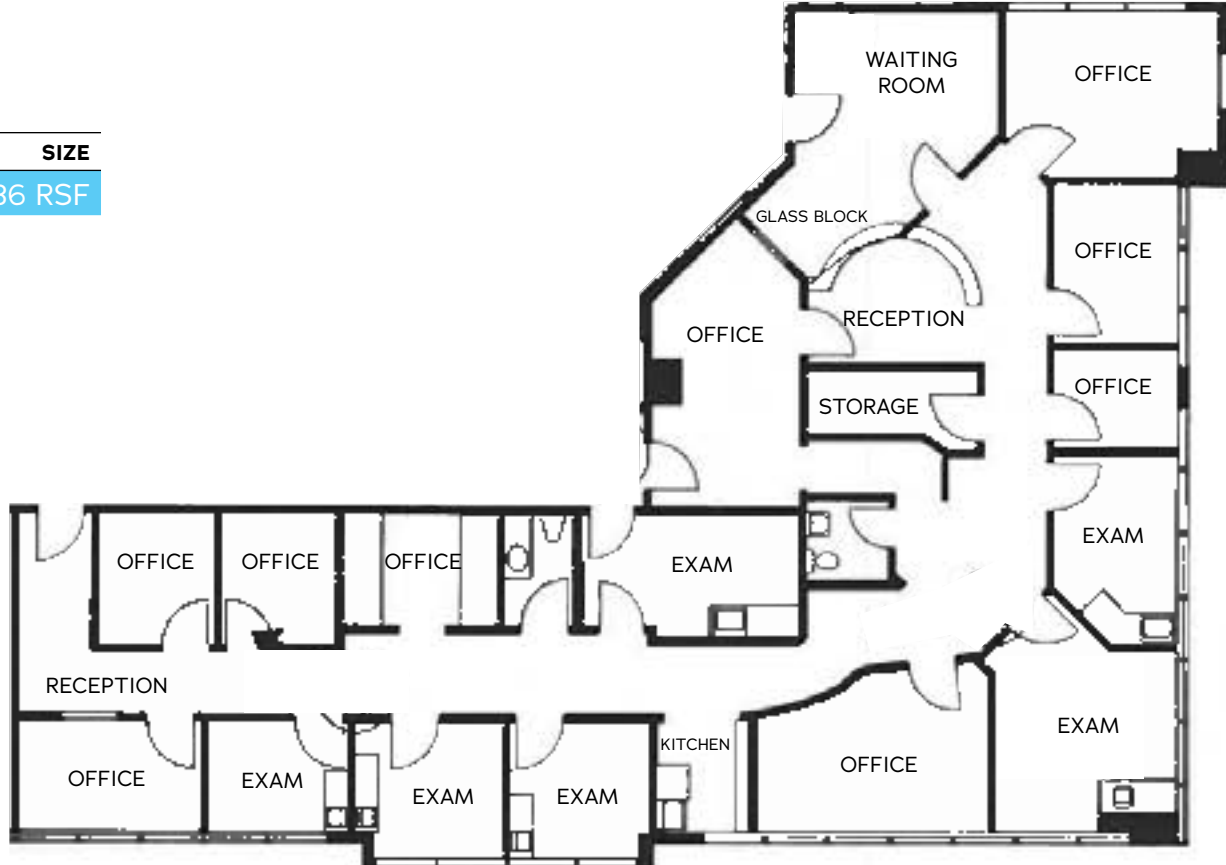
| LEASING | SIZE |
|-----------|------------|
| Suite 200 | ±1,936 RSF |



FLOOR PLAN - Suite 200

AVAILABLE SPACE

| LEASING | SIZE |
|-----------|------------|
| Suite 202 | ±3,136 RSF |



TAKE THE
360°
VIRTUAL TOUR

FLOOR PLAN - Suite 202

AVAILABLE SPACE

| LEASING | SIZE |
|-----------|------------|
| Suite 204 | ±6,172 RSF |



TAKE THE
360°
 VIRTUAL TOUR

FLOOR PLAN - Suite 204

AVAILABLE SPACE

| LEASING | SIZE |
|-----------|------------|
| Suite 302 | ±2,399 RSF |

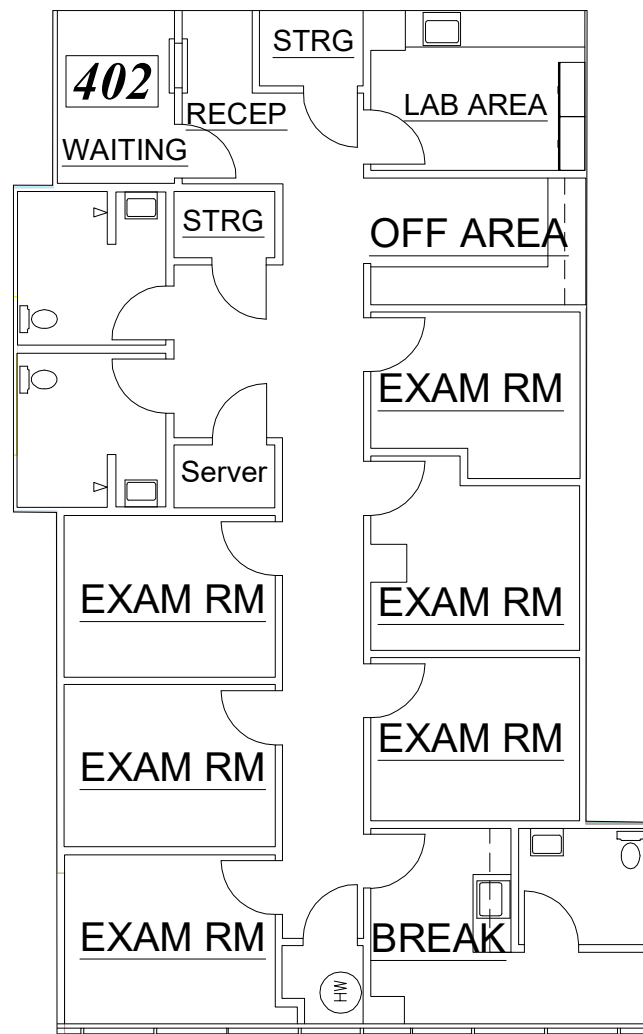


TAKE THE
360[®]
VIRTUAL TOUR

FLOOR PLAN - Suite 302

AVAILABLE SPACE

| LEASING | SIZE |
|-----------|------------|
| Suite 402 | ±2,173 RSF |

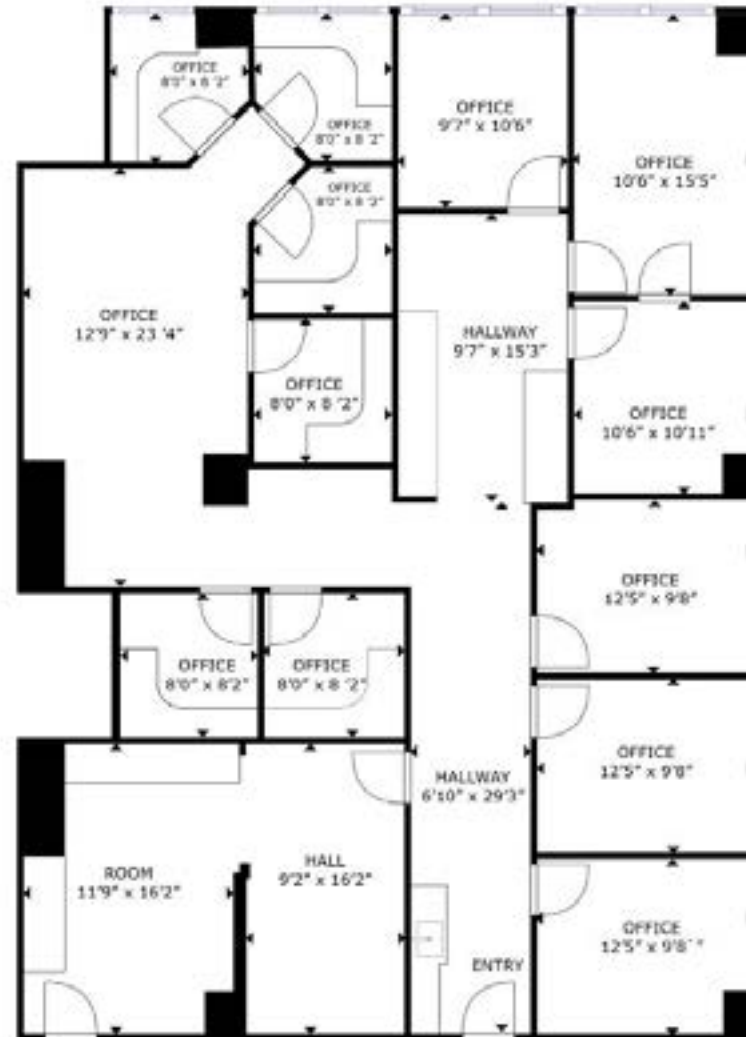


TAKE THE
360°
 VIRTUAL TOUR

FLOOR PLAN - Suite 402

AVAILABLE SPACE

| LEASING | SIZE |
|-----------|------------|
| Suite 403 | ±2,859 RSF |



TAKE THE
360°
 VIRTUAL TOUR

FLOOR PLAN - Suite 403

CONTACTS:

MATT GRIMES, CCIM
Senior Vice President
+1 775 356 6290
matt.grimes@cbre.com
Lic. S.0072644

DAVID WOODS, CCIM
Senior Vice President
+1 775 321 4459
david.woods@cbre.com
Lic. S.0072655

LEAHNA CHAPMAN
Associate
+1 775 823 6937
leahna.chapman@cbre.com
Lic. S.0183267

WWW.CBRE.US/RENO



© 2024 CBRE, Inc. All rights reserved. This information has been obtained from sources believed reliable, but has not been verified for accuracy or completeness. You should conduct a careful, independent investigation of the property and verify all information. Any reliance on this information is solely at your own risk. CBRE and the CBRE logo are service marks of CBRE, Inc. All other marks displayed on this document are the property of their respective owners, and the use of such logos does not imply any affiliation with or endorsement of CBRE. Photos herein are the property of their respective owners. Use of these images without the express written consent of the owner is prohibited. PMSstudio_November2024

Elm Street

343 ELM STREET, RENO, NV 89503

