



## Industrial Warehouse Flex Space

1851 Commander Dr, Lake Havasu City, AZ 86403



**Raul Ballas**

Mohave Realty Inc.

1801 Mesquite Ave, Lake Havasu City, AZ 86403

[raulballas@mohaverealtyinc.com](mailto:raulballas@mohaverealtyinc.com)

(928) 855-0101



# Industrial Warehouse Flex Space

\$15.12 /SF/YR

Light industrial Warehouse building with recent upgrades: exterior / interior office paint, LED lighting, fully air conditioned warehouse spaces vacant and ready for immediate occupancy, new epoxy floor and new office vinyl/carpet, new doors and cabinets, new toilets & sinks - restored! Large mezzanine with fork lift access, large secured outside storage area with back-to-back privacy fencing and gates, 4 restrooms 2-office/2-warehouse (private/public), 4 private offices, kitchen area - 2 roll up doors 12ft x 12ft wide, open lobby/reception or showroom!...

- Location! Busy Industrial area 1 block from Main Hwy
- Completely Renovated! Paint, floors and Cabinets - New!
- Large Warehouse and 4 private offices!



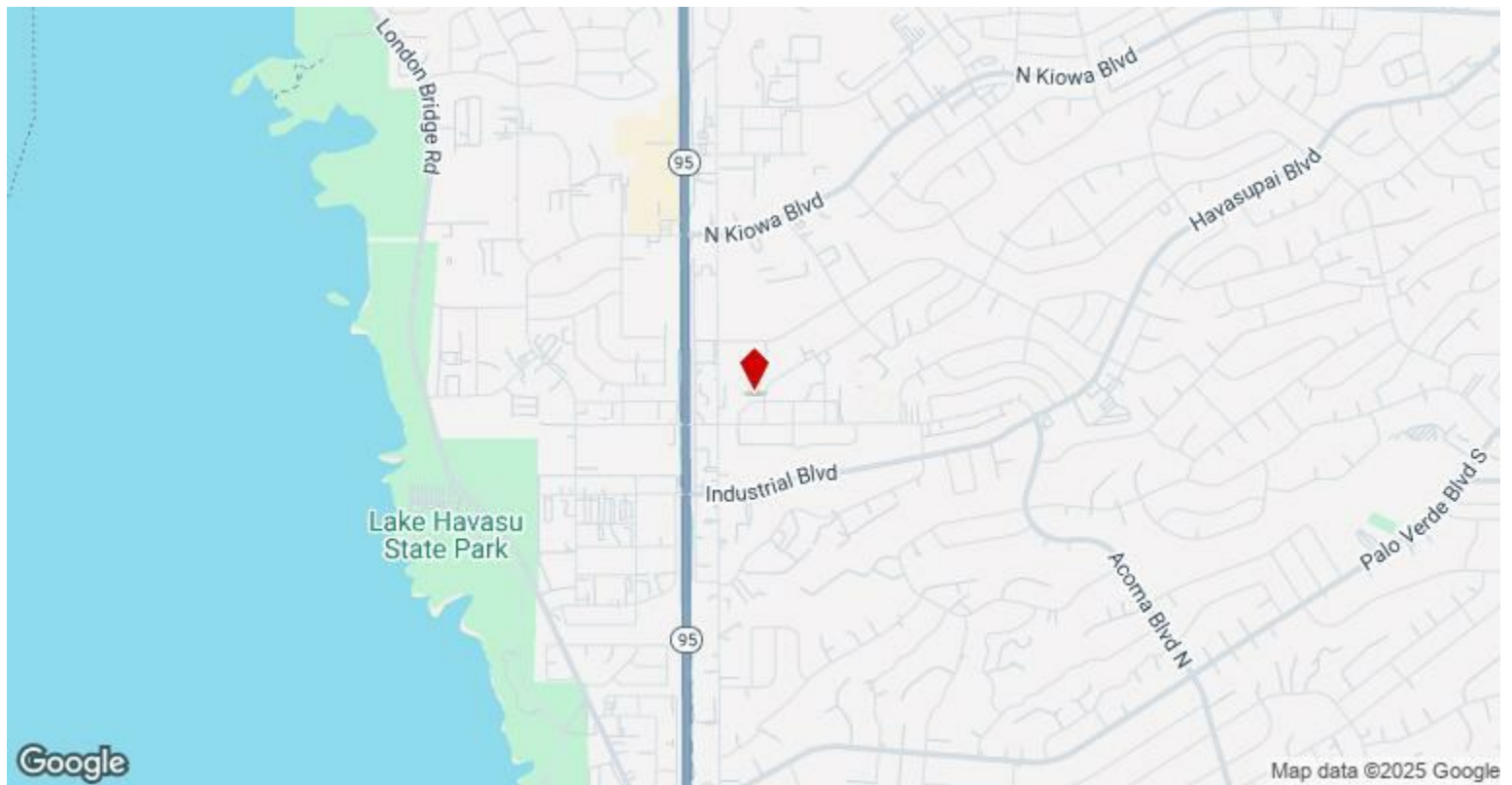
Rental Rate:	\$15.12 /SF/YR
Property Type:	Retail
Property Subtype:	Freestanding
Gross Leasable Area:	7,968 SF
Year Built:	1978
Walk Score ®:	46 (Car-Dependent)
Rental Rate Mo:	\$1.26 /SF/MO

1

1st Floor

Space Available	7,968 SF
Rental Rate	\$15.12 /SF/YR
Date Available	Now
Service Type	Triple Net (NNN)
Office Size	7,968 SF
Space Type	Relet
Space Use	Industrial
Lease Term	Negotiable

Light industrial Warehouse building with recent upgrades: exterior / interior office paint, LED lighting, fully air conditioned warehouse spaces vacant and ready for immediate occupancy, new epoxy floor and new office vinyl/carpet, new doors and cabinets, new toilets & sinks - restored! Large mezzanine with fork lift access, large secured outside storage area with back-to-back privacy fencing and gates, 4 restrooms 2-office/2-warehouse (private/public), 4 private offices, kitchen area - 2 roll up doors 12ft x 12ft wide, open lobby/reception or showroom!



## 1851 Commander Dr, Lake Havasu City, AZ 86403

Light industrial Warehouse building with recent upgrades: exterior / interior office paint, LED lighting, fully air conditioned warehouse spaces vacant and ready for immediate occupancy, new epoxy floor and new office vinyl/carpet, new doors and cabinets, new toilets & sinks - restored! Large mezzanine with fork lift access, large secured outside storage area with back-to-back privacy fencing and gates, 4 restrooms 2-office/2-warehouse (private/public), 4 private offices, kitchen area - 2 roll up doors 12ft x 12ft wide, open lobby/reception or showroom!



## Property Photos



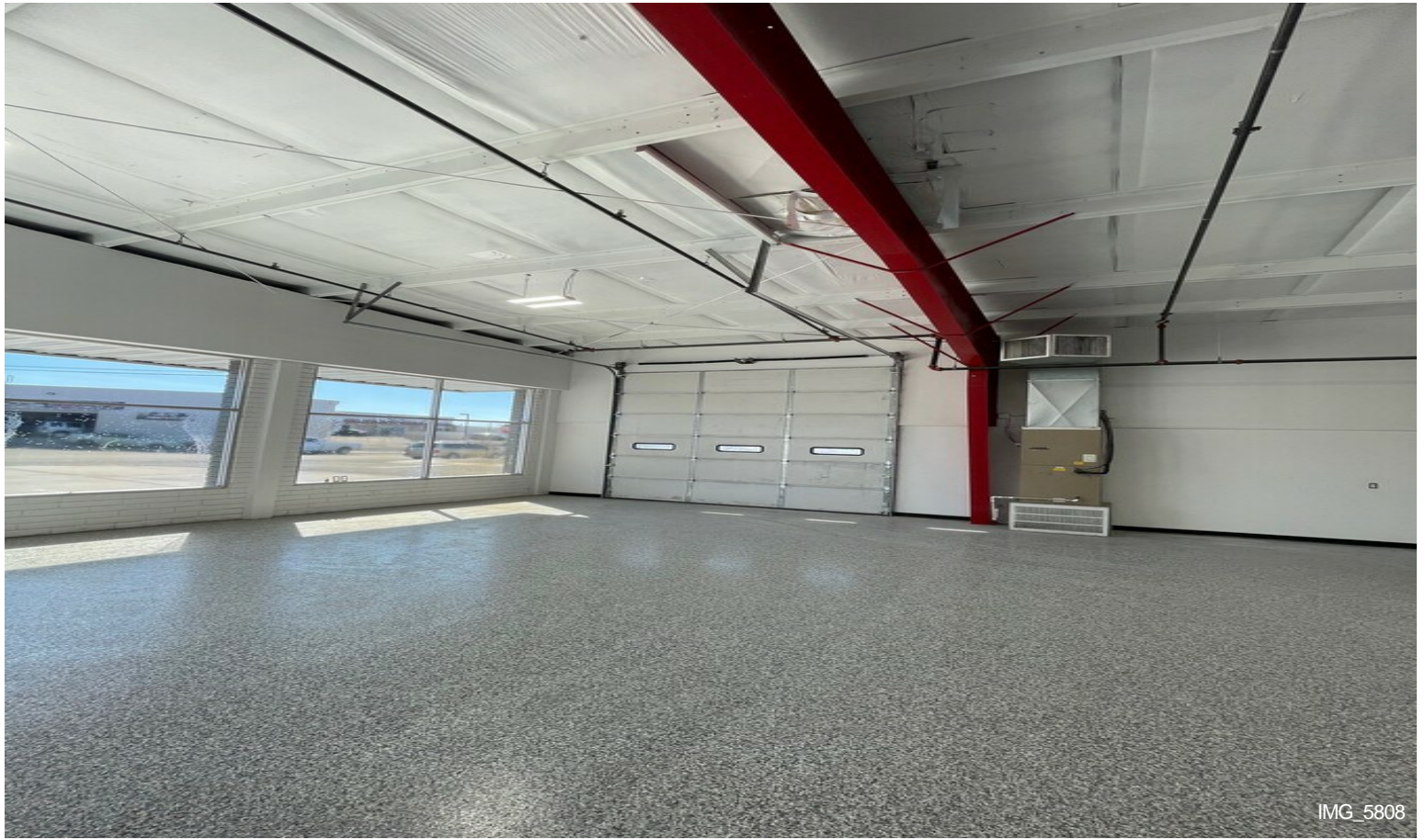


## Property Photos



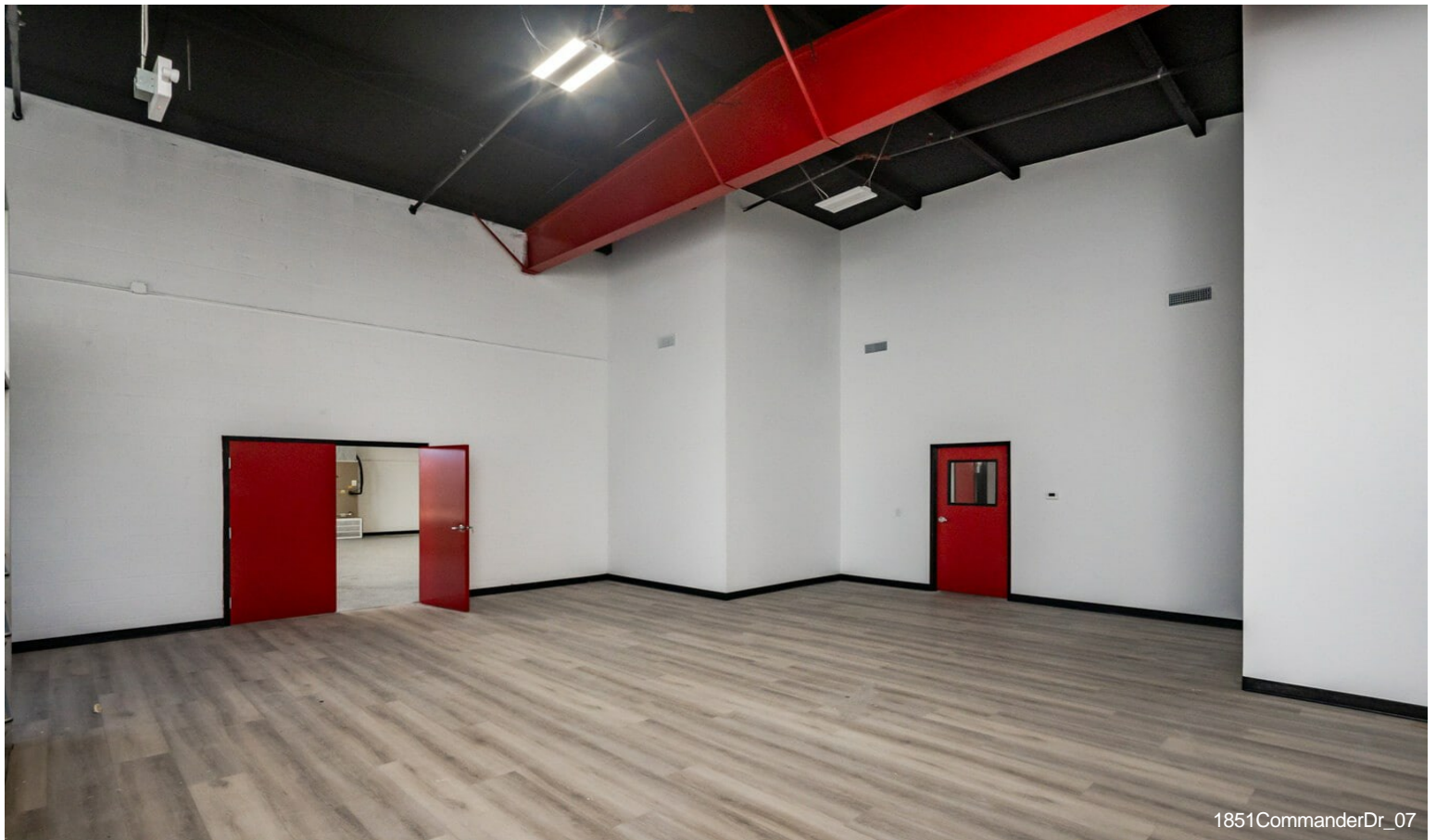


## Property Photos



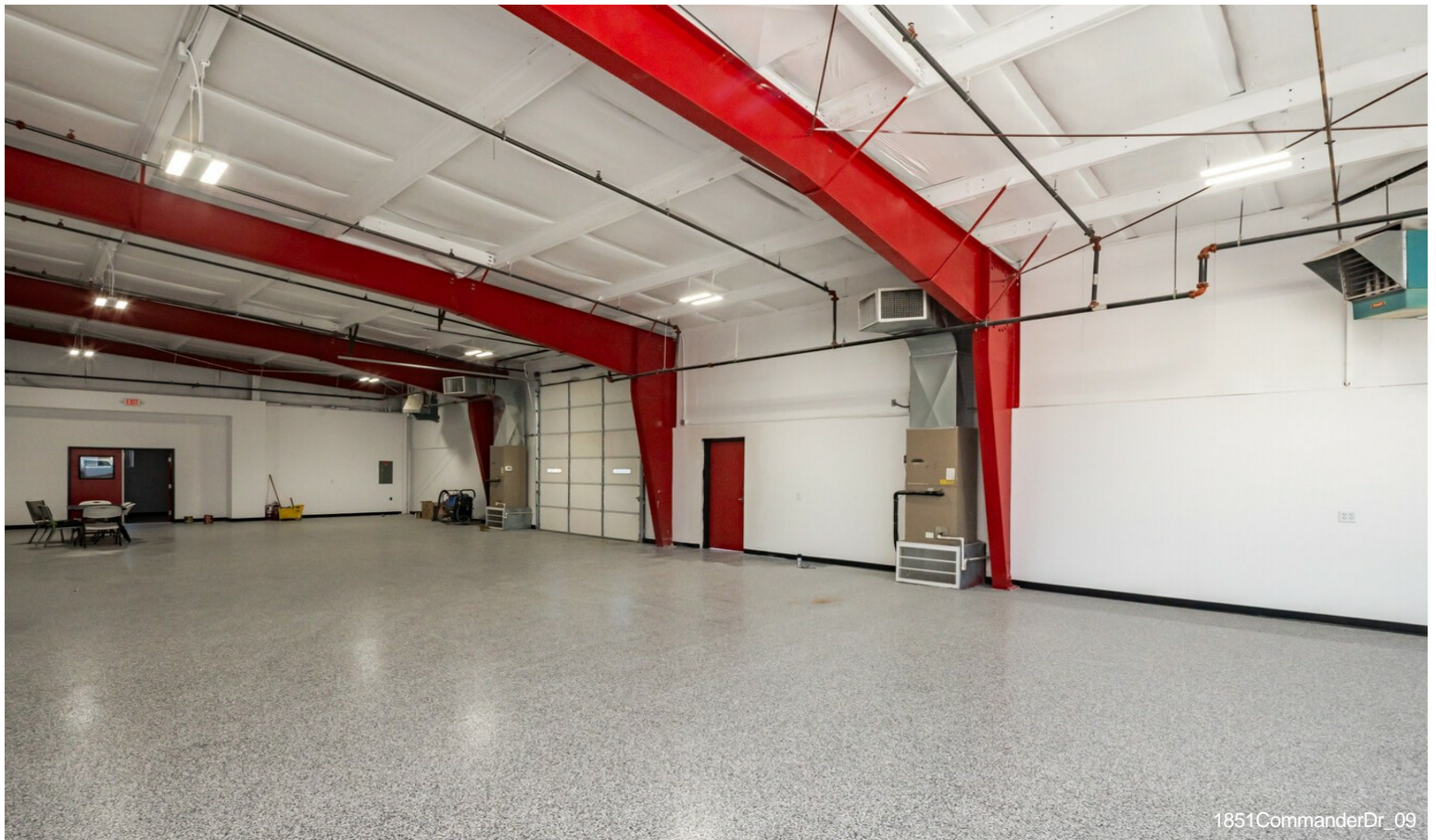


## Property Photos





## Property Photos





## Property Photos

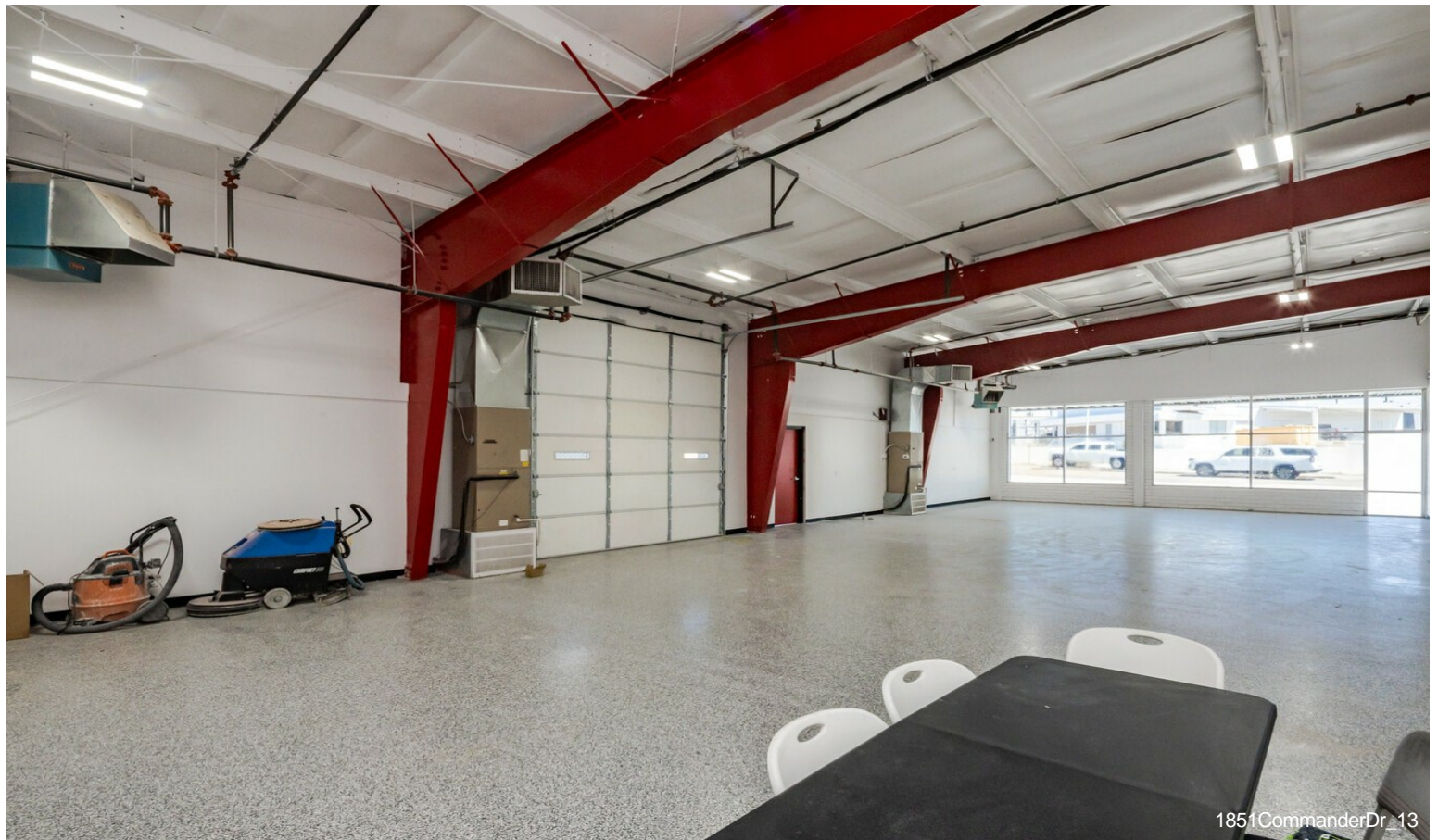




## Property Photos



1851CommanderDr\_12



1851CommanderDr\_13



## Property Photos





## Property Photos



## Property Photos





## Property Photos



## Property Photos





## Property Photos



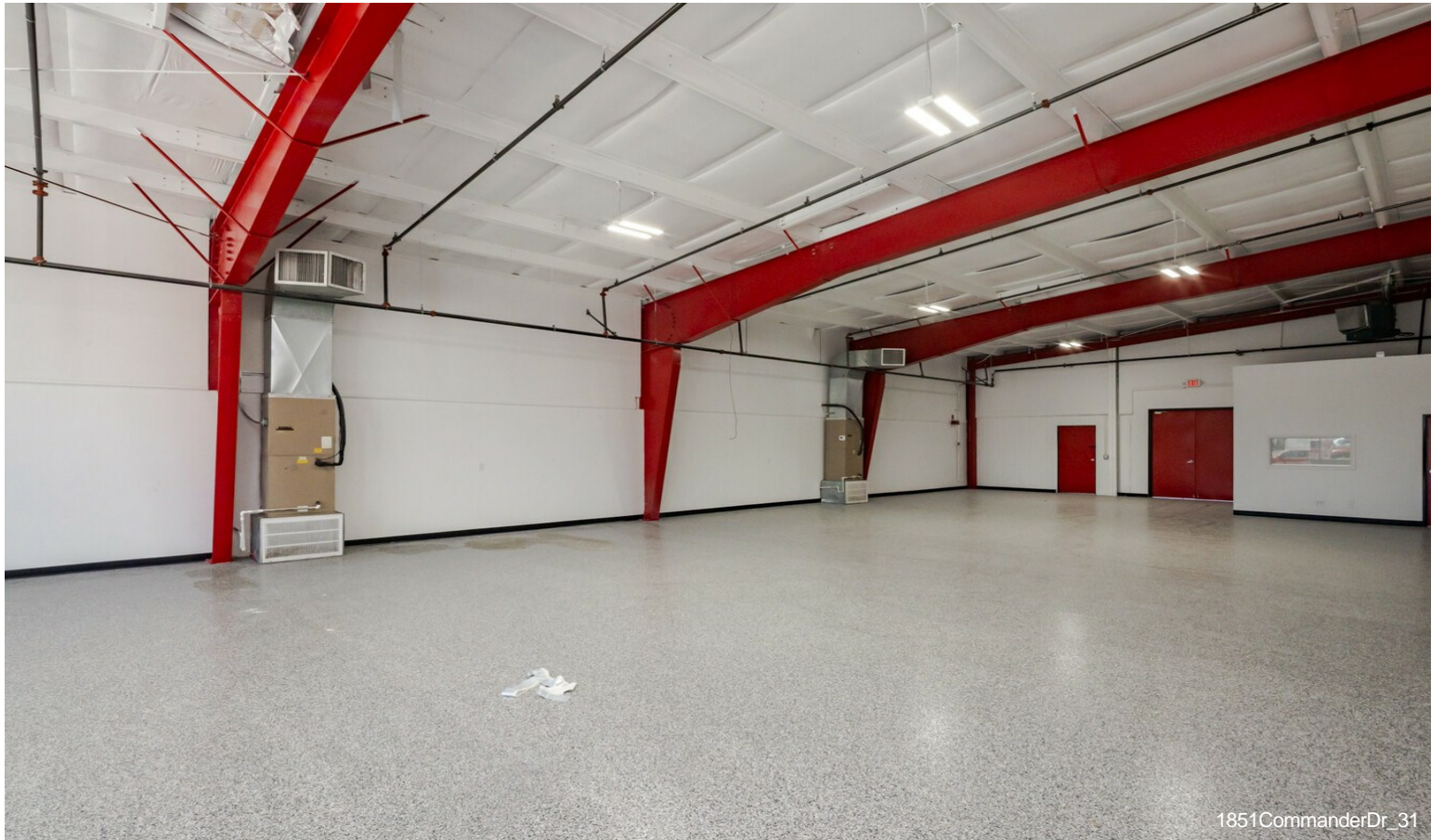
## Property Photos





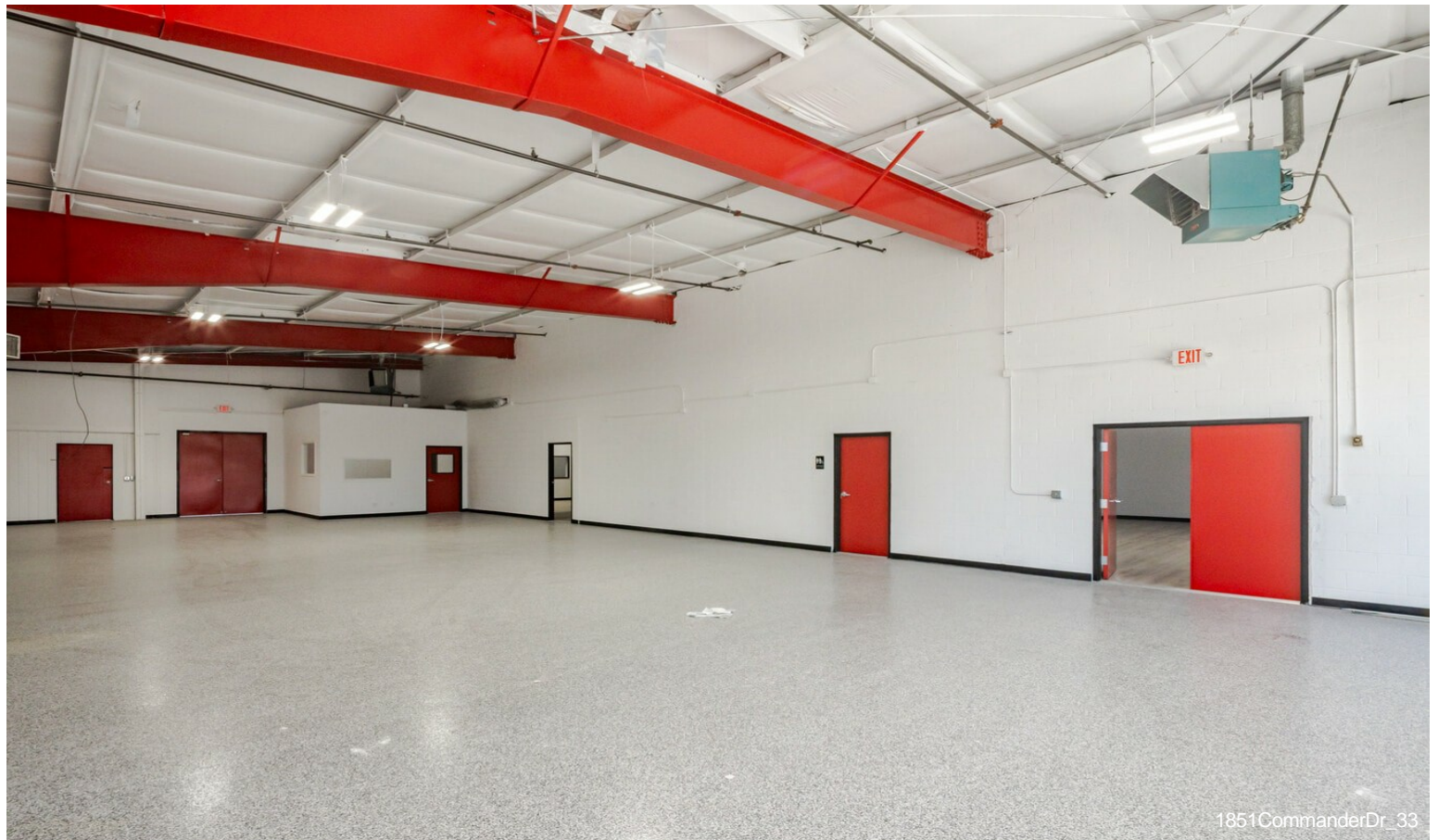
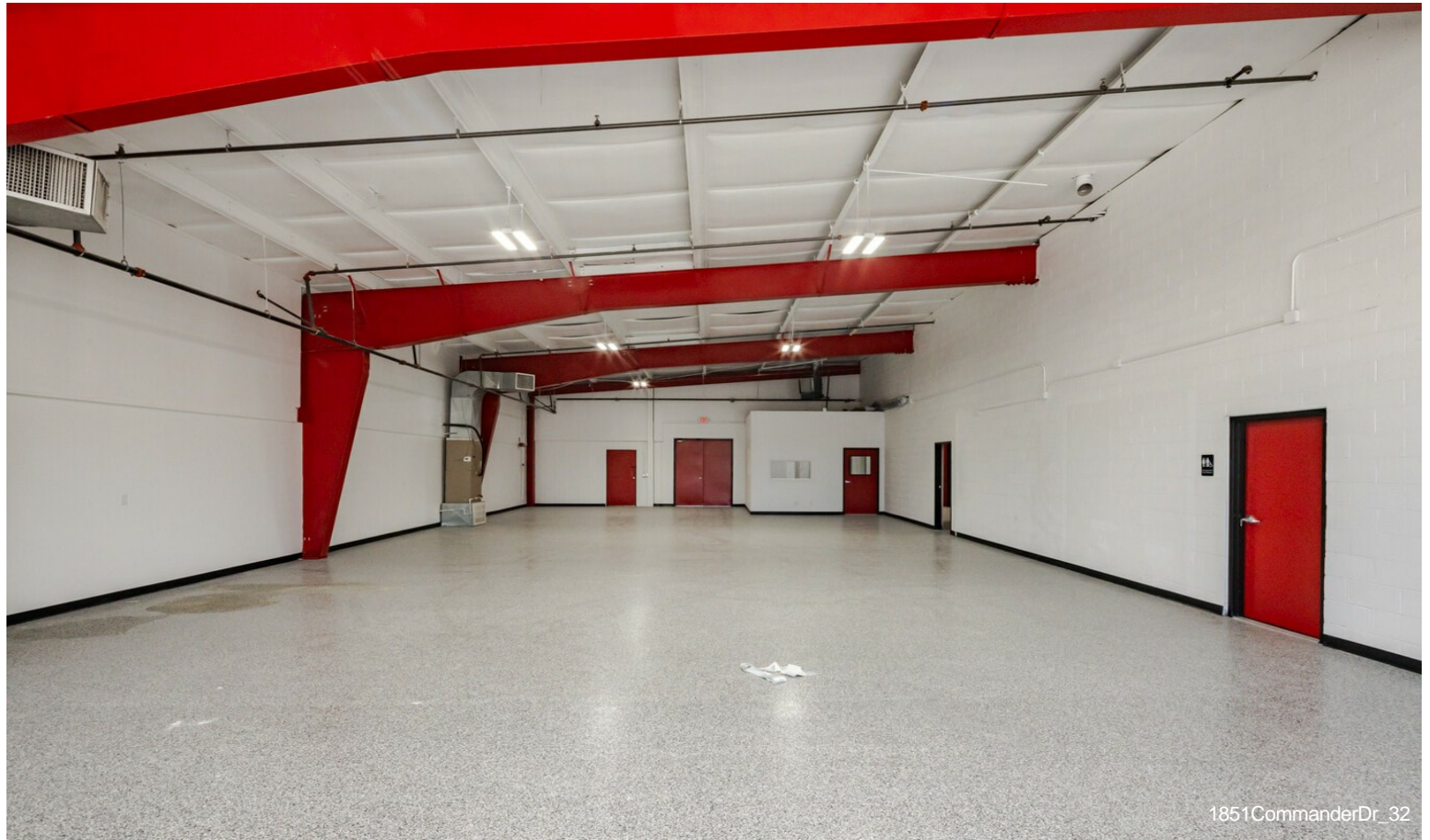
## Property Photos





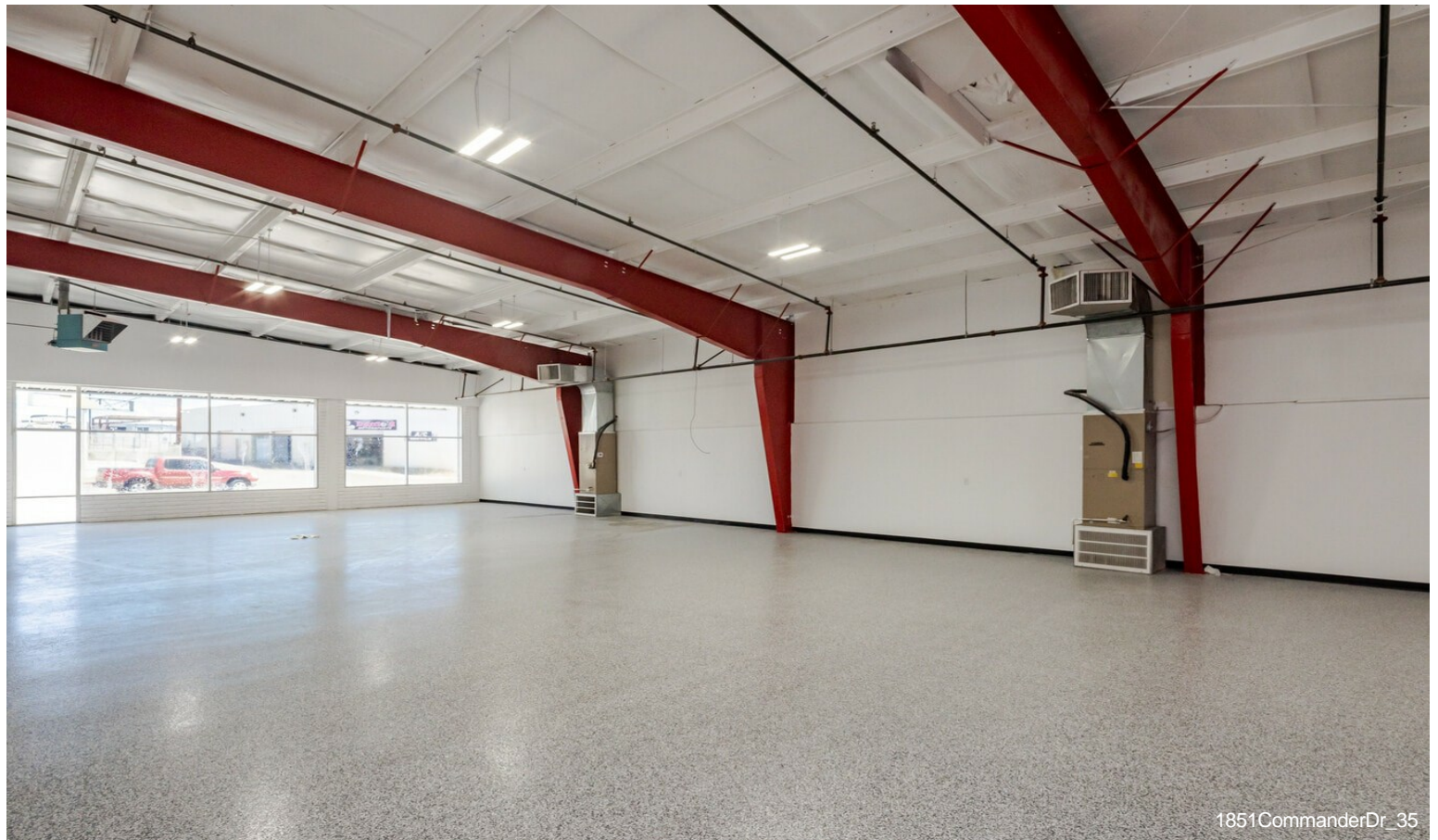


## Property Photos





## Property Photos





## Property Photos





## Property Photos





## Property Photos



1851CommanderDr\_40



1851CommanderDr\_41



## Property Photos





## Property Photos





## Property Photos



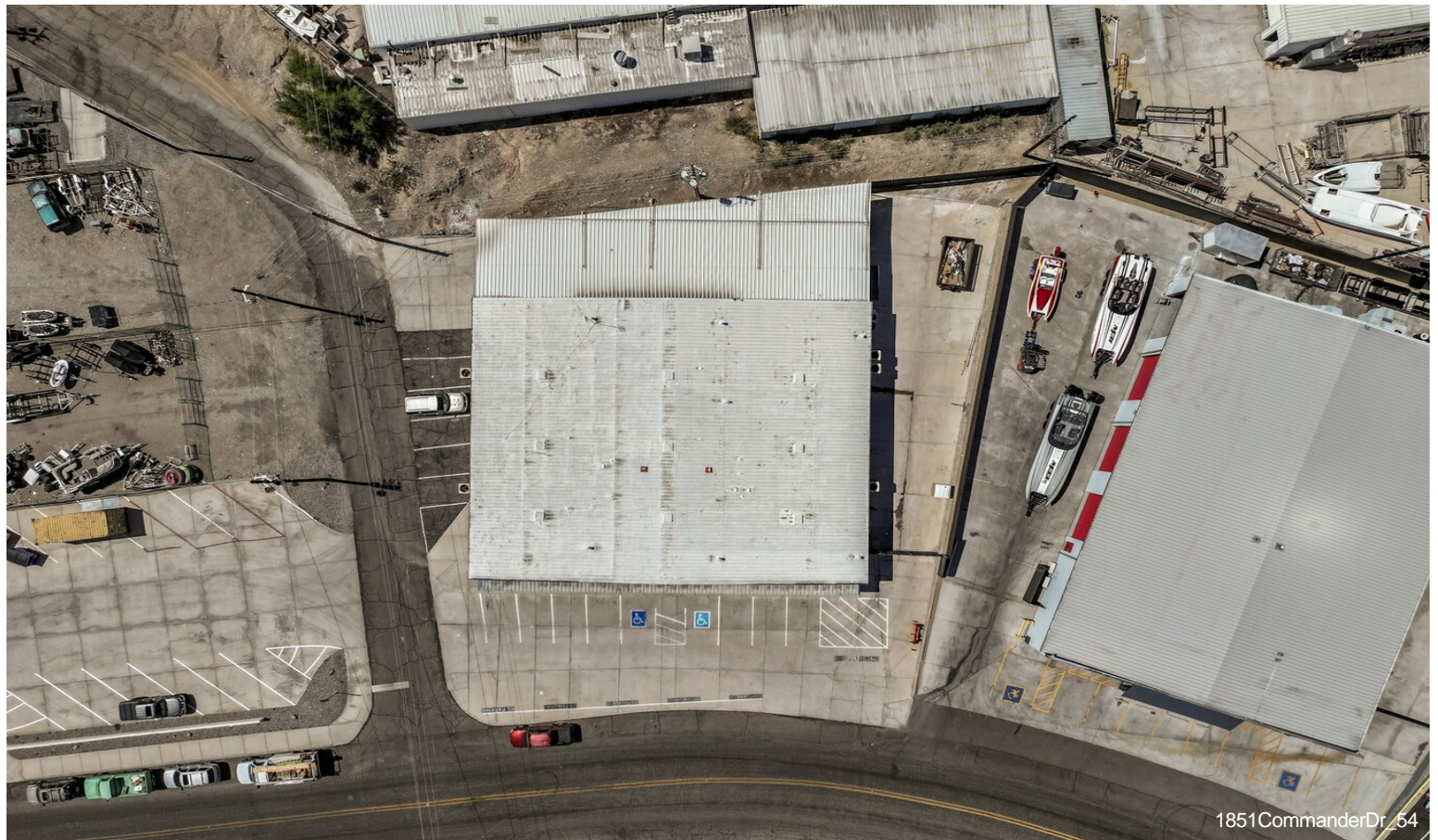
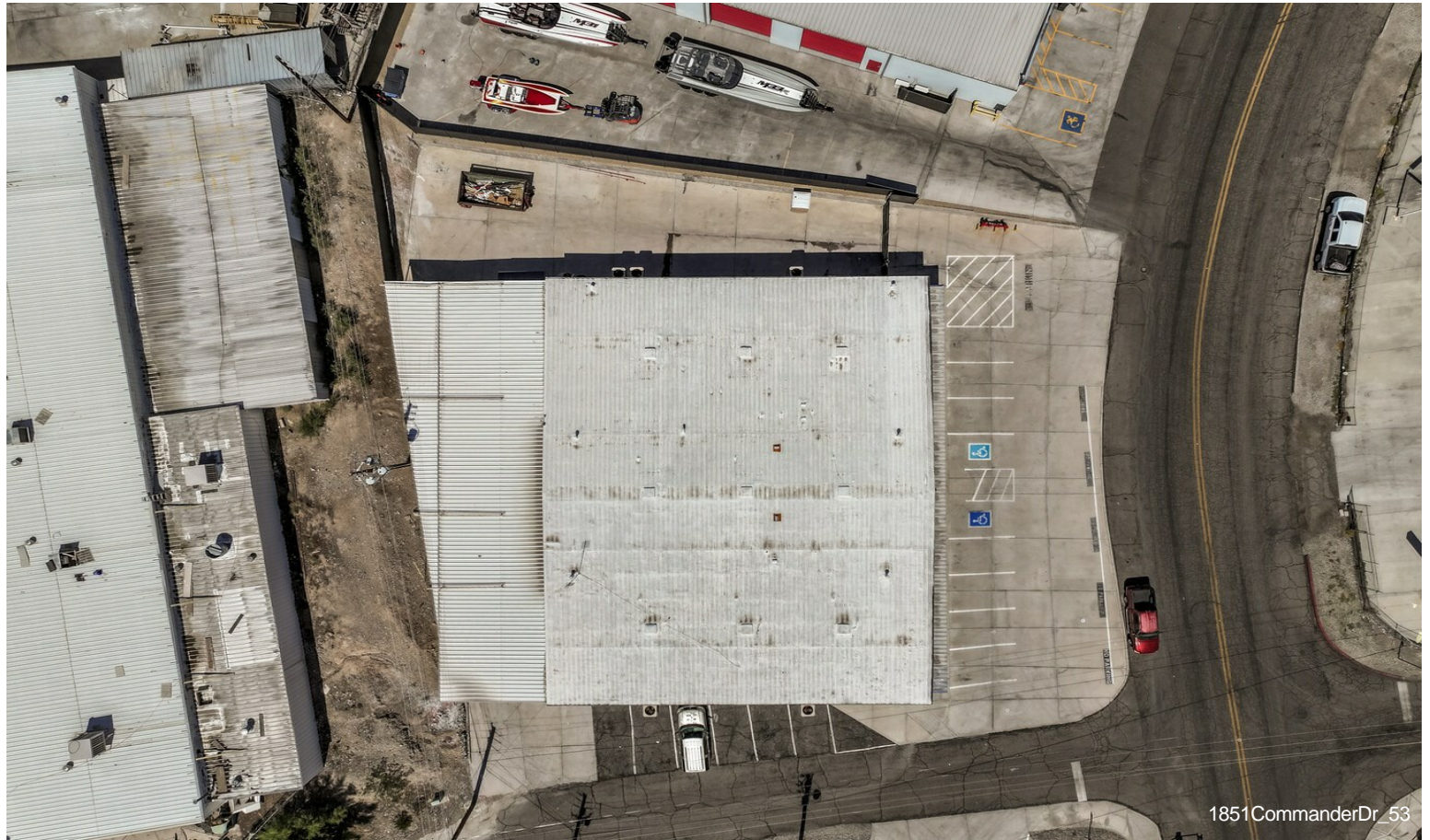


## Property Photos





# Property Photos





## Property Photos





## Property Photos

