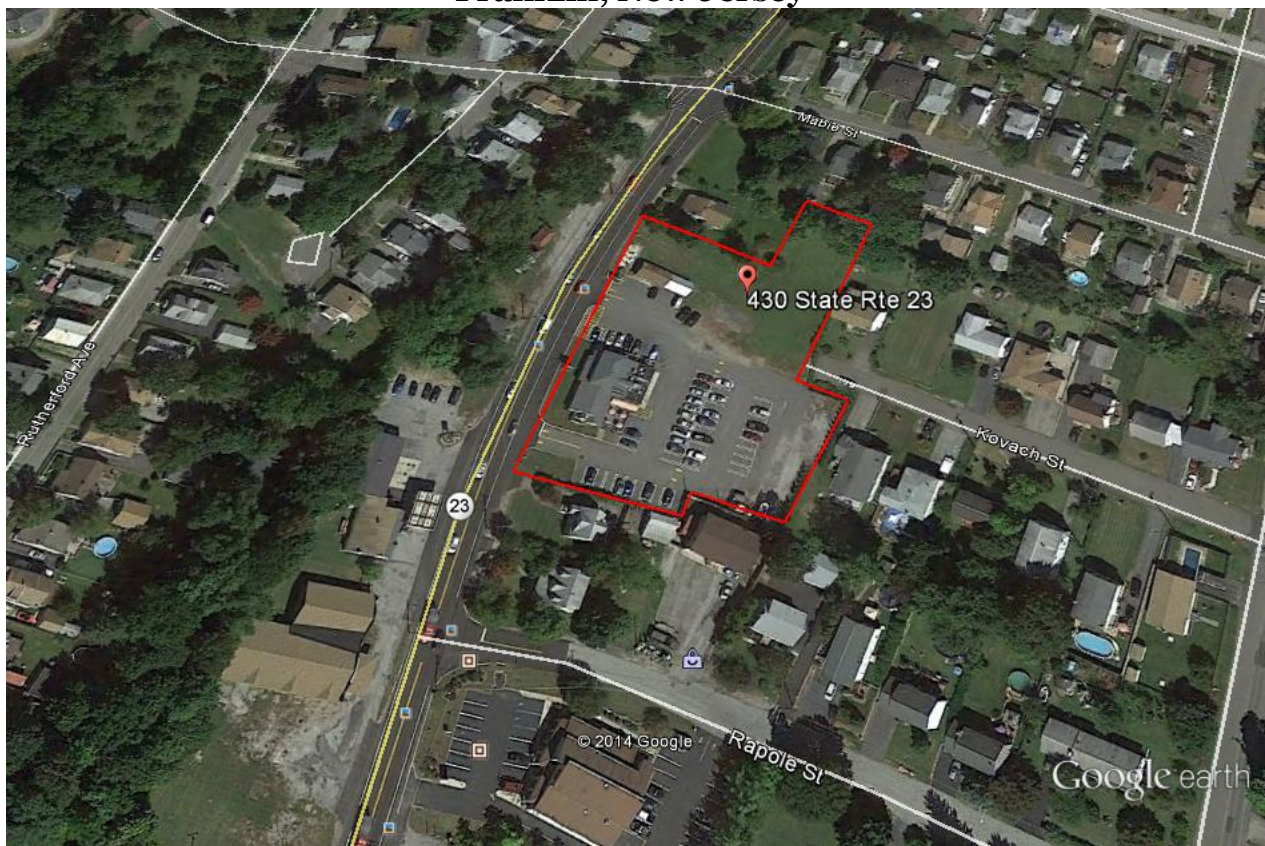


1037 Route 46 East – Suite 204  
Clifton, NJ 07013  
973-470-9304 973-470-9821 (Fax)  
**973-332-0518 Direct Dial**

**For Lease or Build to Suite**  
**430 Route 23 North**  
**Franklin, New Jersey**



Ground Lease or Build to Suite  
Up to 6,500 +/- Square foot building  
Liquor License Available & Drive Possible Drive Through  
Great location just north of the Wal Mart Plaza  
Brand New AutoZone and STS Tire Center Across the Street

**Contact Douglas Balduini Executive Vice President 973-332-0518 cell**  
**[doug@evergreencommercial.com](mailto:doug@evergreencommercial.com) e-mail**

*\* All information deemed reliable but not guaranteed and subject to your due diligence\**