

# Lusby Commons

11738 Rousby Hall Road - Lusby, MD 20657

±1,353-4,184 SF Available for Lease



**Questions? Contact Us.**

**Melissa Lippe**

MLippe@jcbarprop.com

p. 610-206-3319

c. 215-264-6964

# Lusby Commons

11738 Rousby Hall Road - Lusby, MD 20657

±1,353-4,184 SF Available for Lease

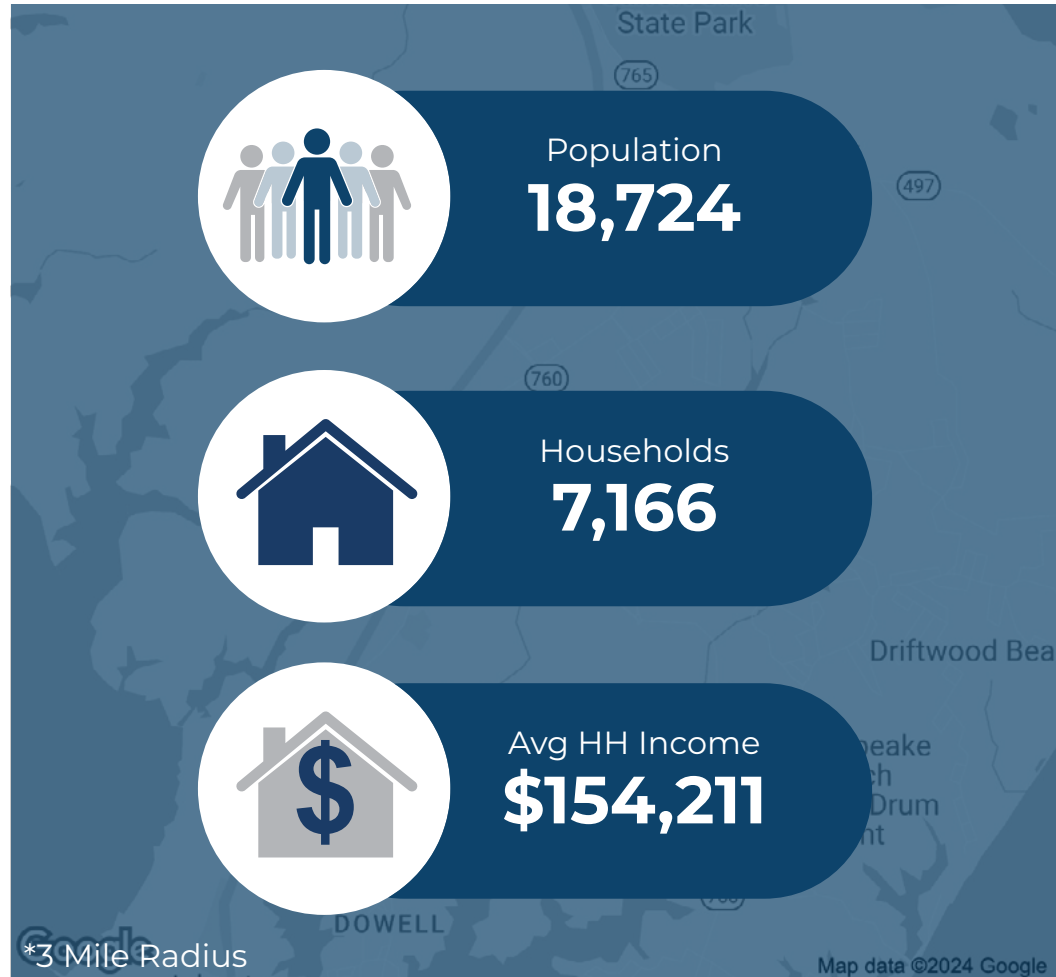
## Highlights

- Lusby Commons is a 110,654 GLA neighborhood shopping center located in Lusby, MD
- Anchored by Giant Food Stores
- The property has great visibility off HG Trueman Road in an expanding trade area
- Over 26,000 people with an average household income over \$113,000 within a 5-mile radius
- Trade area's dominant retail center with prime market location
- Auto Zone under construction
- Well positioned off of Route 4, with 25,333 AADT

### JOIN



Demographic	1 Mile	3 Miles	5 Miles
Population	2,538	18,724	26,742
Households	1,012	7,166	10,182
Avg HH Income	\$94,547	\$154,211	\$158,246
Daytime Employees	785	3,857	4,570



Questions? Contact Us.

Melissa Lippe

MLippe@jcbarprop.com

p. 610-206-3319

c. 215-264-6964

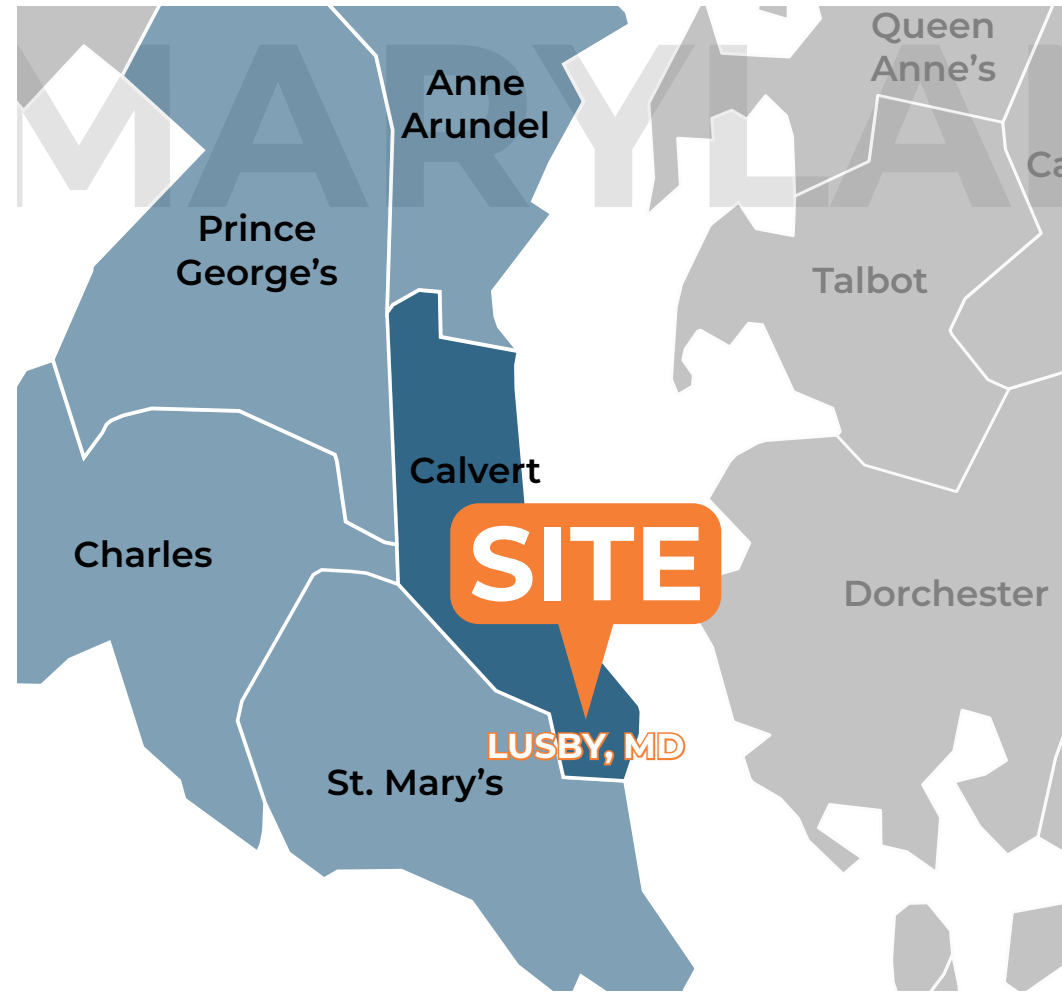
# Lusby Commons

11738 Rousby Hall Road - Lusby, MD 20657

±1,353-4,184 SF Available for Lease

## About Lusby Commons

Lusby's central business district has been growing rapidly in recent years. Three shopping centers have recently been built, bringing in new grocery stores, restaurants, and other businesses. Several new roads have either been built or are in planning stages in order to ease traffic congestion to and from the Chesapeake Ranch Estates-Drum Point communities. Lusby also features Cove Point Park, which has numerous baseball, soccer, and lacrosse fields as well as a public swimming pool. There is a public golf course, Chesapeake Hills Golf Course, near Cove Point Park. There is also a private air field owned and operated by the Chesapeake Ranch Estates and Drum Point communities.



**Questions? Contact Us.**

**Melissa Lippe**

[MLippe@jcbarprop.com](mailto:MLippe@jcbarprop.com)

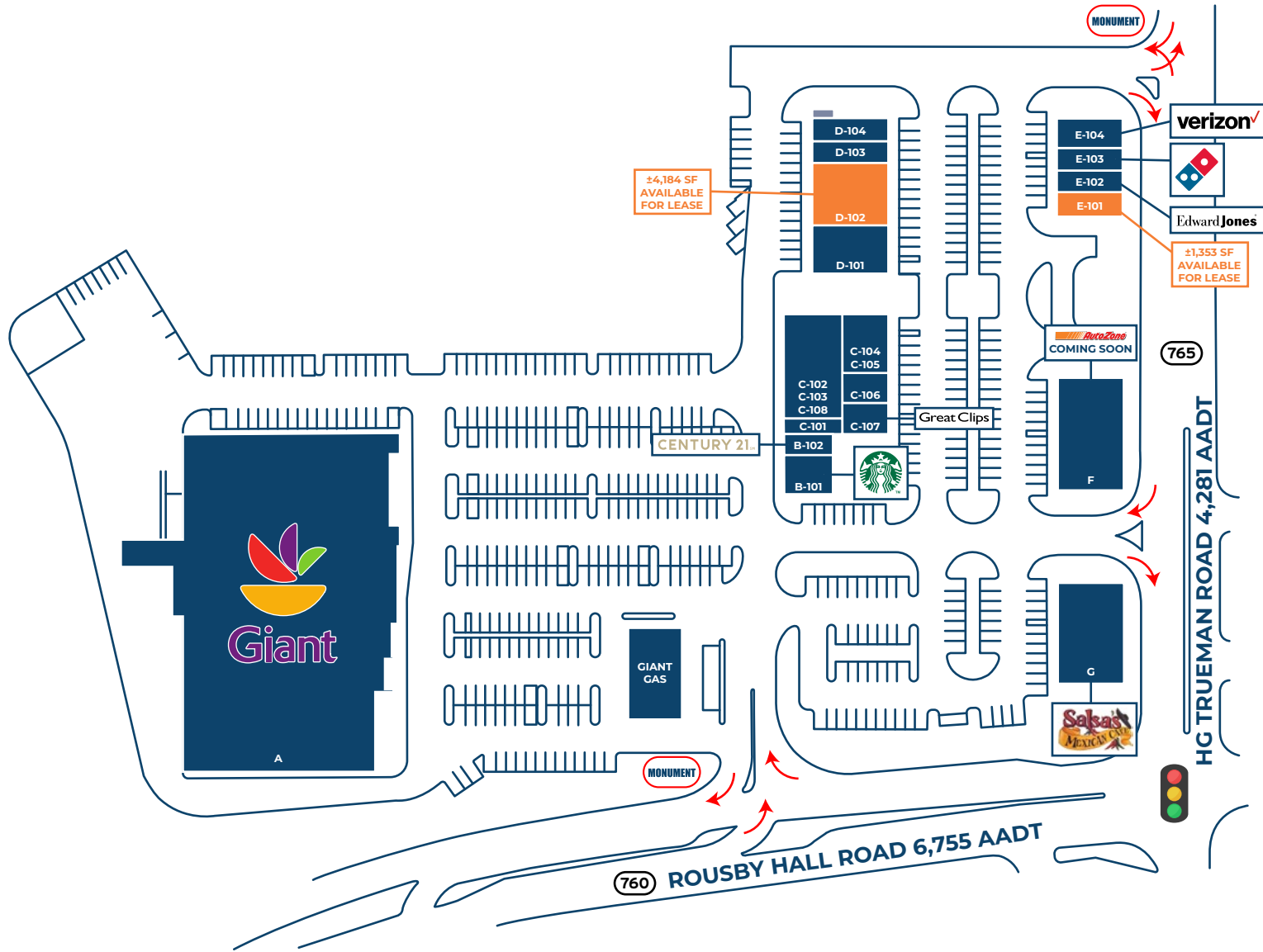
p. 610-206-3319

c. 215-264-6964

# Lusby Commons

11738 Rousby Hall Road - Lusby, MD 20657

Unit	Tenant	Square Footage
A	Giant	±61,489 SF
B-101	Starbucks	±1,658 SF
B-102	Century 21 Real Estate	±880 SF
C-101	P&K Cleaners & Tailoring	±796 SF
C-102/3	Patuxent Wine & Spirits	±3,787 SF
C-104/5	Ledo's Pizza	±2,119 SF
C-106	Avalon Nails	±1,093 SF
C-107	Great Clips	±1,148 SF
C-108	Patuxent Wine & Spirits	±1,142 SF
D-101	Golden Chicken	±3,173 SF
D-102	AVAILABLE	±4,184 SF
D-103	House of Grace Salon	±1,492 SF
D-104	Revitalization Skin Studio	±1,483 SF
E-101	AVAILABLE	±1,353 SF
E-102	Edward Jones	±1,200 SF
E-103	Domino's	±1,157 SF
E-104	Verizon	±1,600 SF
F	AutoZone Coming Soon	±6,096 SF
G	Salsa's Mexican Cafe	±5,500 SF
Total SF		±101,350 SF



# Site Plan



PATUXENT  
ELEMENTARY  
SCHOOL

25,333 AADT

4

760

Rousby Hall Road 6,755 AADT

HG Trueman Rd

4,281 AADT

±4,184 SF  
AVAILABLE  
FOR LEASE

±1,353 SF  
AVAILABLE  
FOR LEASE

765

GENTURY 21

Great Clips

verizon

MONUMENT

AutoZone  
COMING SOON

Sakhs

MONUMENT

Valvoline

ExxonMobil

LUSBY  
LIQUORS

CITGO

Giant

Shore  
United  
Bank

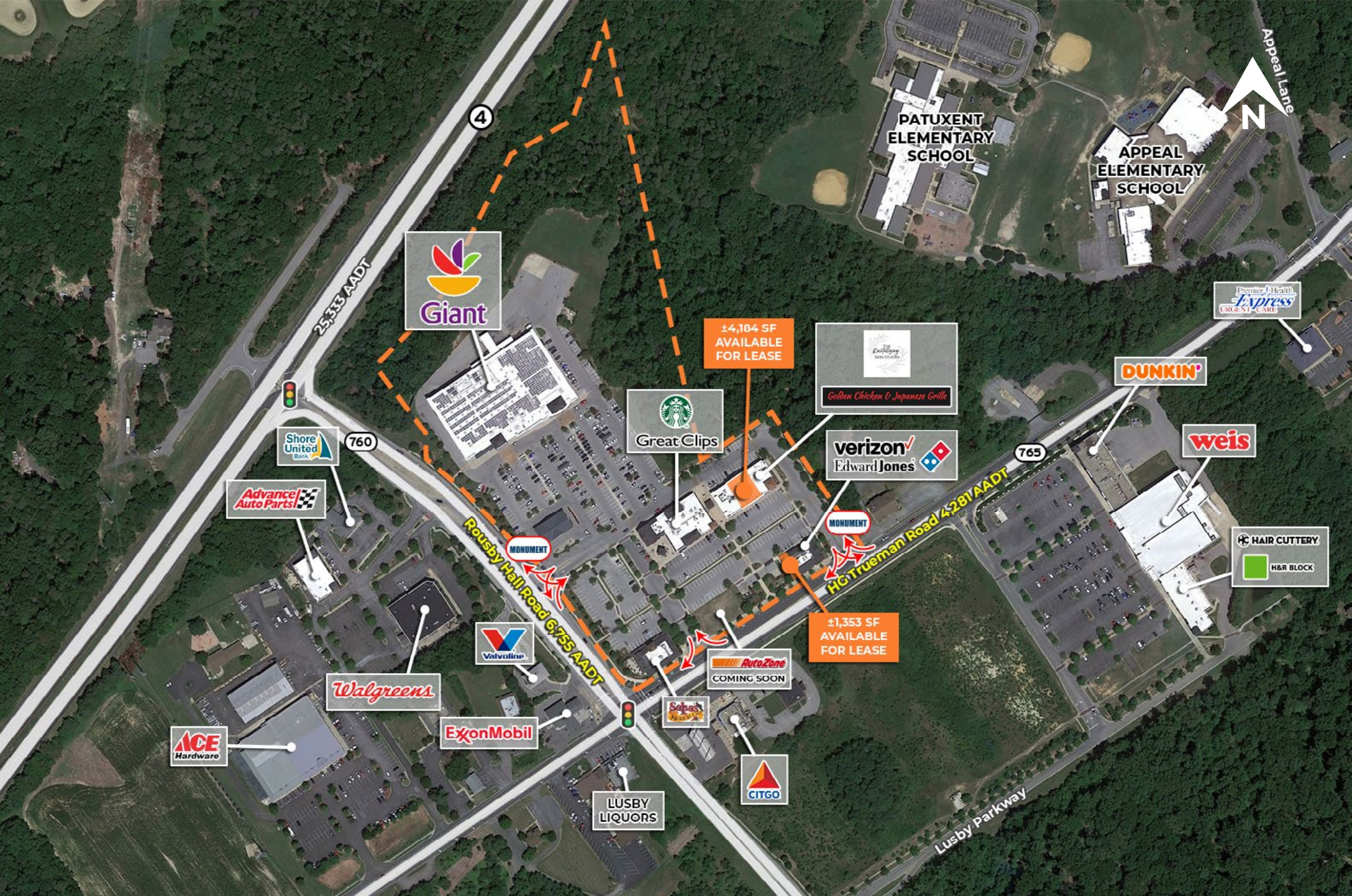
Advance  
Auto Parts

Walgreens

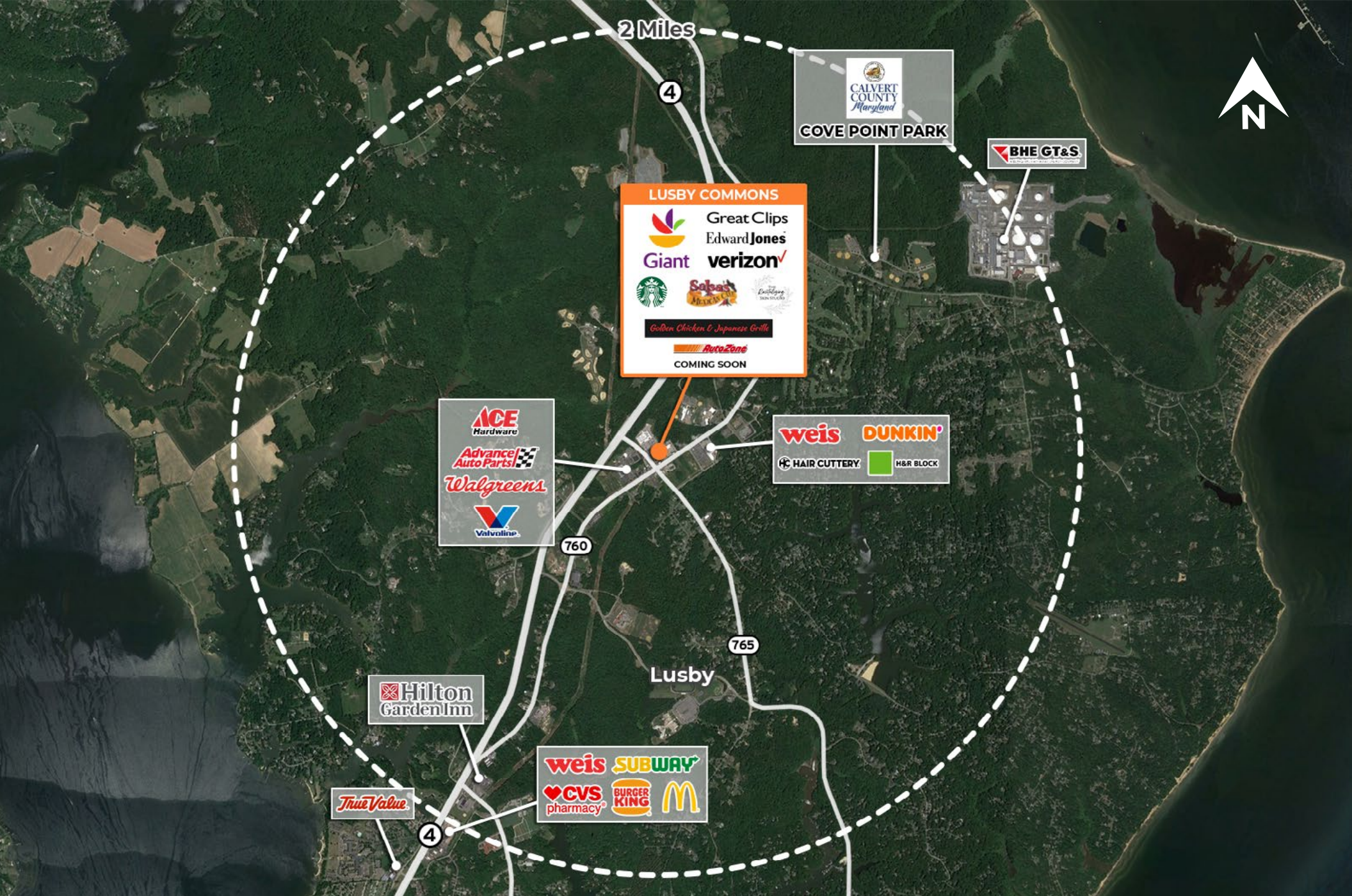
ACE  
Hardware

# Zoom Aerial

The information and images contained herein are from sources deemed reliable. However, J.C.BAR Properties, Inc. makes no representation whatsoever as to their accuracy or authenticity. Images shown may be modified for illustrative purposes. Images may be out-of-date and not current.



# Local Aerial



2 Miles



  
**CALVERT COUNTY**  
*Maryland*  
**GOVE POINT PARK**

  
**BHE GT&S**

**LUSBY COMMONS**

 **Great Clips**  
 **Edward Jones**  
 **Giant**  **verizon**  
  

*Golden Chicken & Japanese Grill*

 **AutoZone**  
**COMING SOON**

 **ACE Hardware**  
 **Advance Auto Parts**  
 **Walgreens**  
 **Valvoline**

 **weis**  **DUNKIN'**  
 **HAIR CUTTERY**  **H&R BLOCK**

 **Hilton Garden Inn**

 **True Value**

 **weis**  **SUBWAY**  
 **CVS pharmacy**  **BURGER KING**  **McDonald's**

# Market Aerial

The information and images contained herein are from sources deemed reliable. However, J.C.BAR Properties, Inc. makes no representation whatsoever as to their accuracy or authenticity. Images shown may be modified for illustrative purposes. Images may be out-of-date and not current.



# Site Photos