

naisselect.com



SITE

SITE

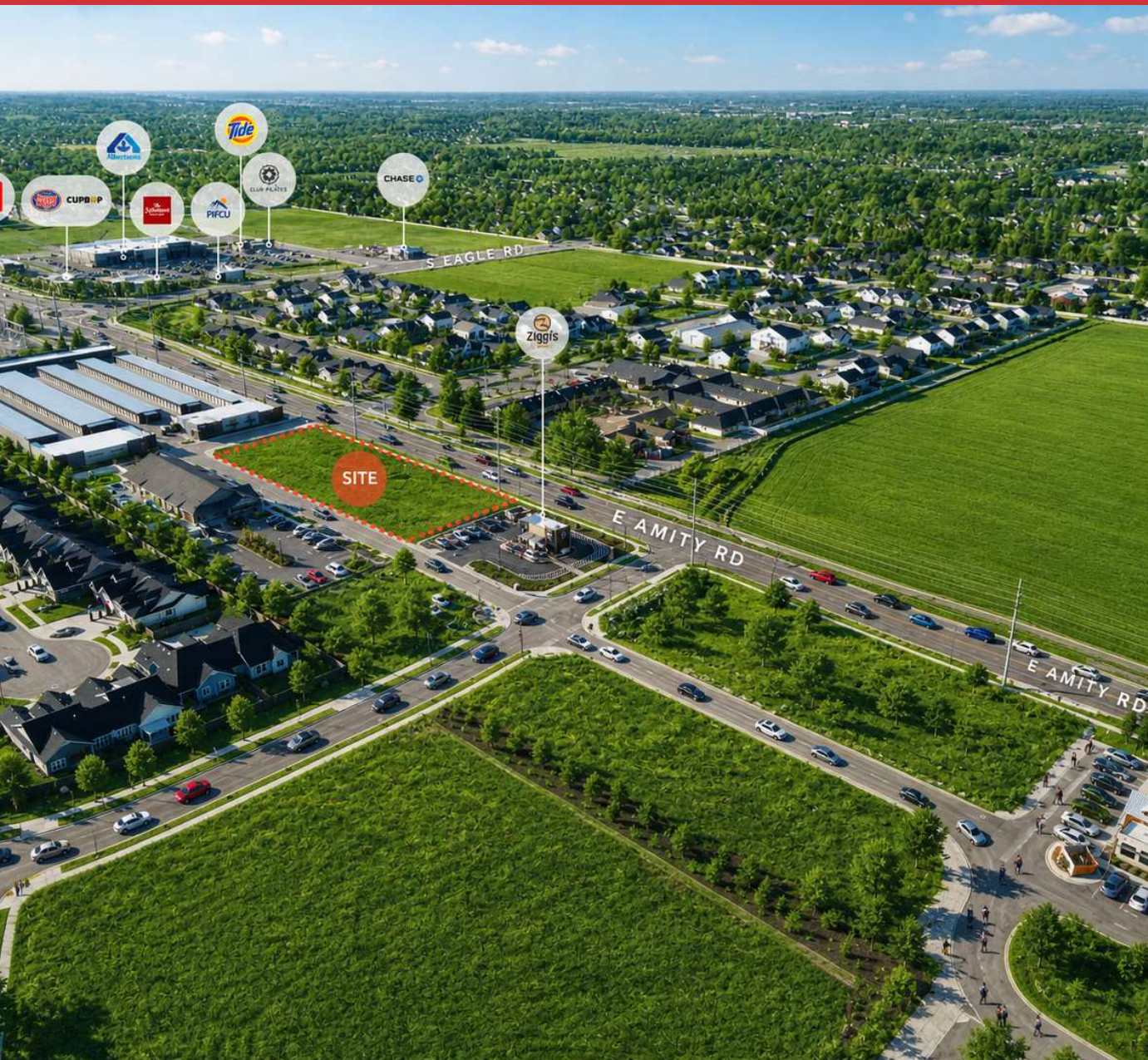
SITE

CENTURY FARM SOUTH MERIDIAN

MERIDIAN, ID 83642

4815-4831 S. Tavistock Ave.
Meridian, ID 83642

NAISelect



PROPERTY INFORMATION

| | |
|------------------------|--|
| PROPERTY TYPE | Multi-Tenant Retail |
| LEASE RATE | Negotiable |
| AVAILABLE SPACE | ±1,374 - ±1,443 SF |
| ADDRESS | 4815-4831 S Tavistock Ave, Meridian, ID 83642 |
| LEASE TERM | Negotiable |
| LEASE TYPE | NNN |

HIGHLIGHTS

- Convenient access to major roads and commuting routes
- Close to parks, schools, and everyday amenities
- Situated in one of the fastest-growing areas in the Treasure Valley
- Multiple suites / buildings available – flexible leasing options
- Excellent building image; Amity Rd frontage
- Modern construction with attractive storefront presence
- Strong average household incomes and pop density
- High growth area

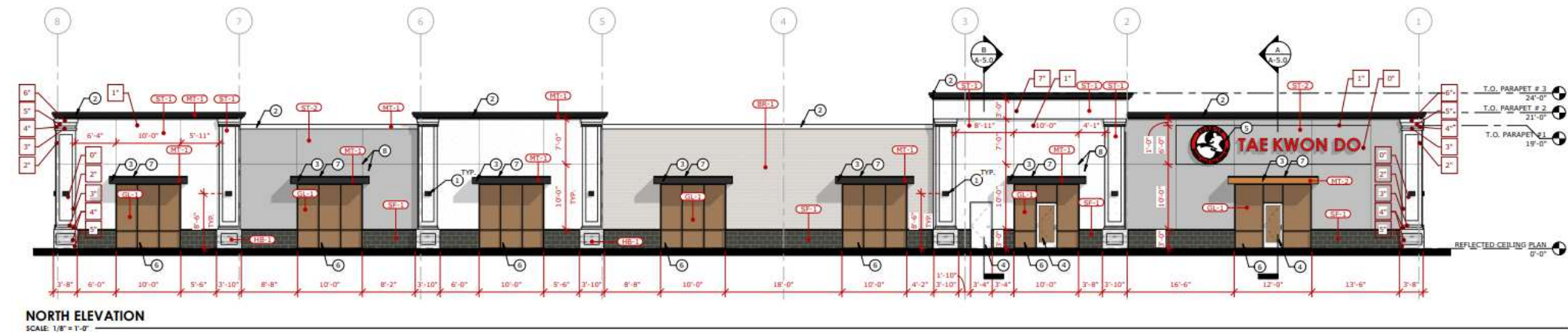
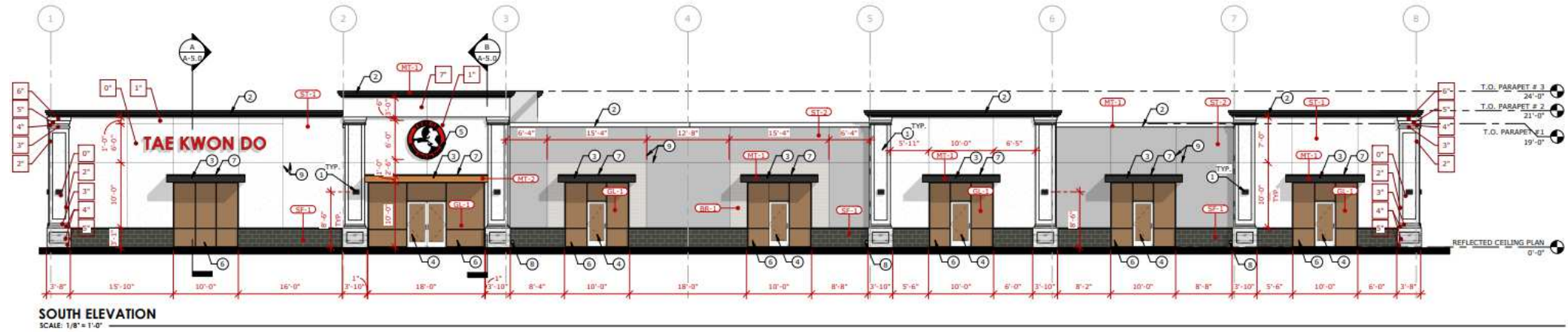
This information was obtained from sources believed reliable but cannot be guaranteed and is subject to change at any time. Any opinions or estimates are used for example only.

TRAVIS DUNN

208.229.6005 | travis@naiselect.com

RILEY WIEDMEIER, MBA

208.954.2229 | riley@naiselect.com



TRAVIS DUNN

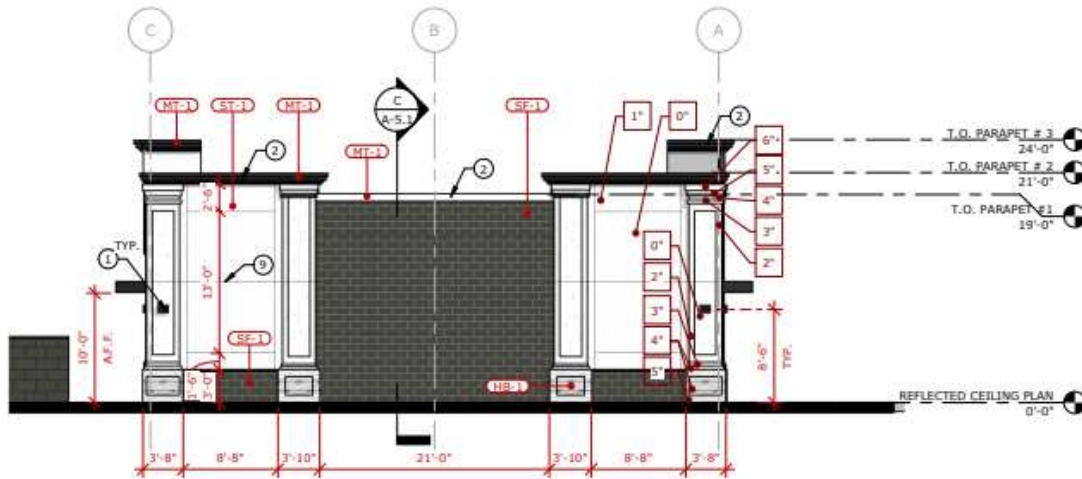
208.229.6005 | travis@naiselect.com

RILEY WIEDMEIER, MBA

208.954.2229 | riley@naiselect.com

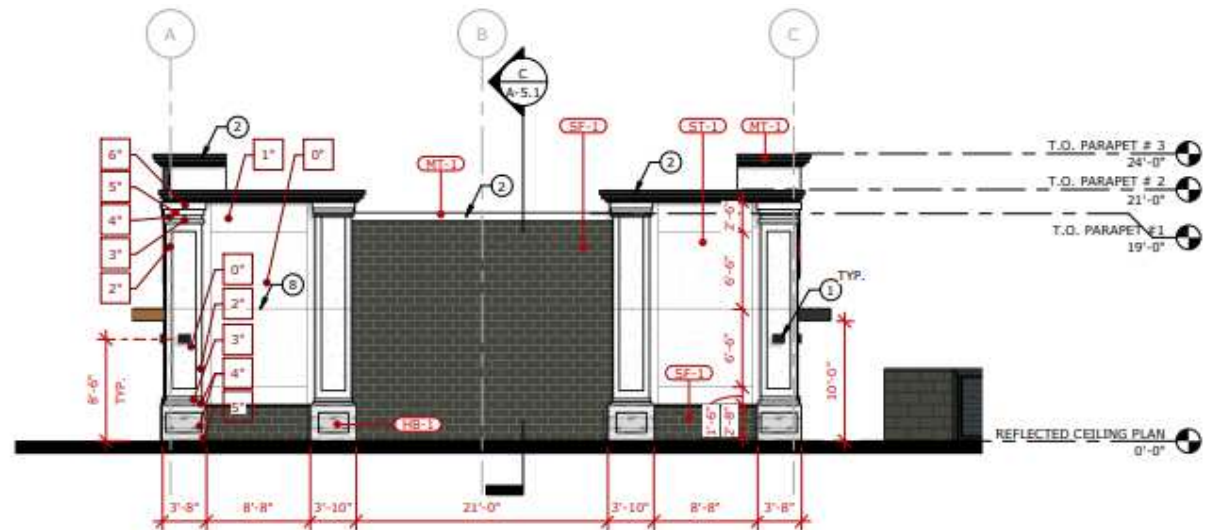
NAI SELECT | 5571 N. GLENWOOD ST., BOISE, ID 83714 | 208.229.2020





EAST ELEVATION

SCALE: 1/8" = 1'-0"



WEST ELEVATION

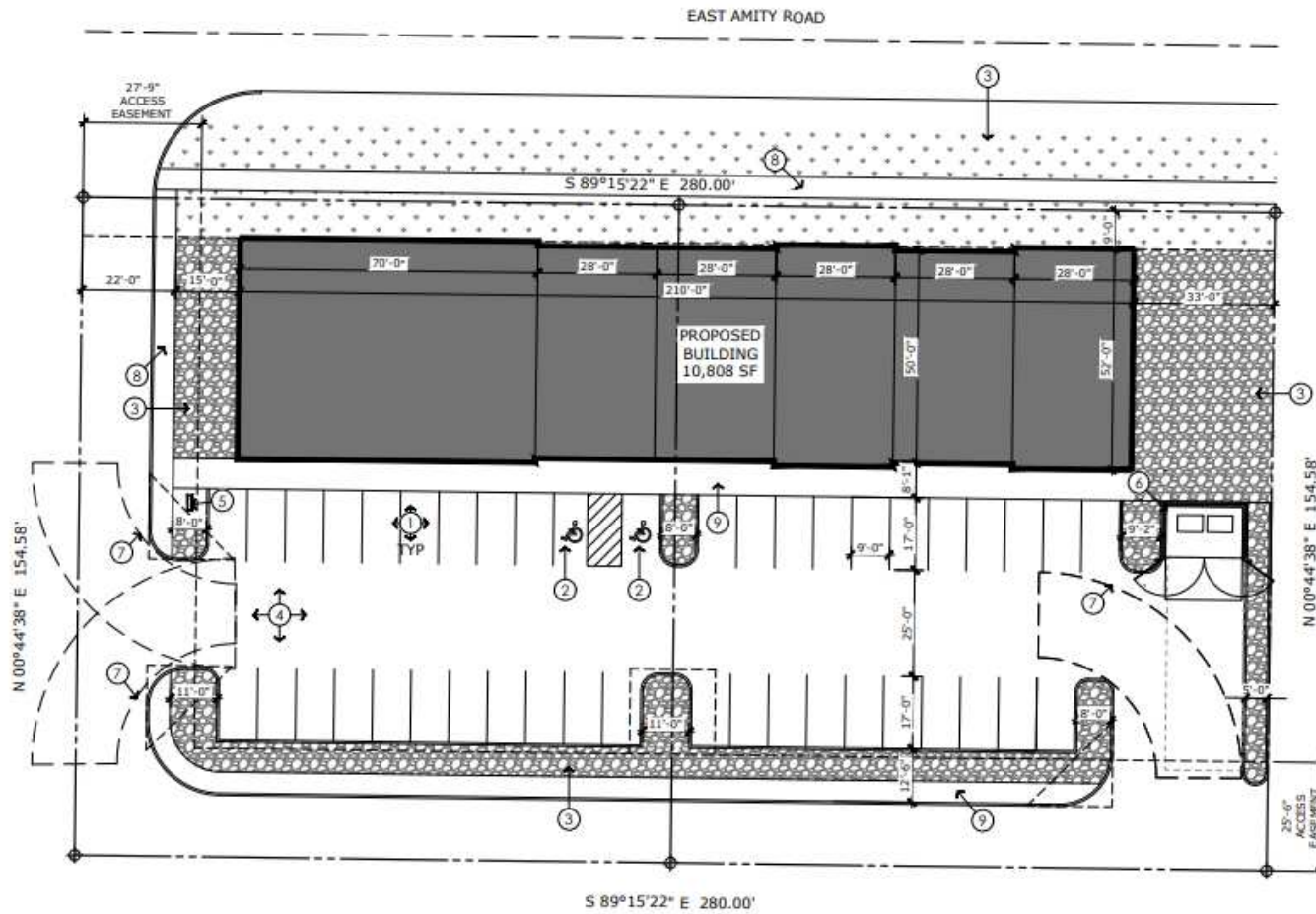
SCALE: 1/8" = 1'-0"

TRAVIS DUNN

208.229.6005 | travis@naiselect.com

RILEY WIEDMEIER, MBA

208.954.2229 | riley@naiselect.com

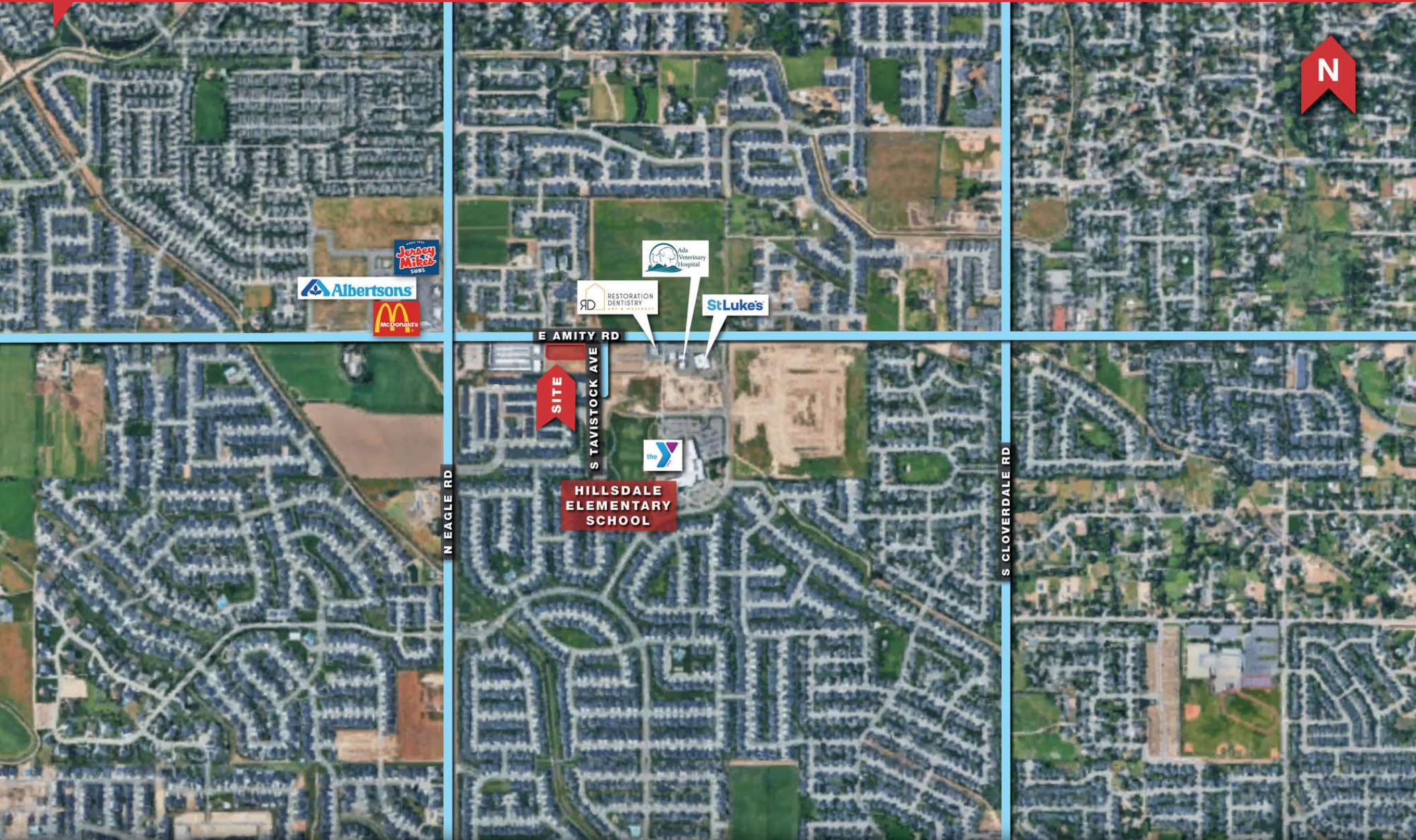


TRAVIS DUNN

208.229.6005 | travis@naiselect.com

RILEY WIEDMEIER, MBA

208.954.2229 | riley@naiselect.com

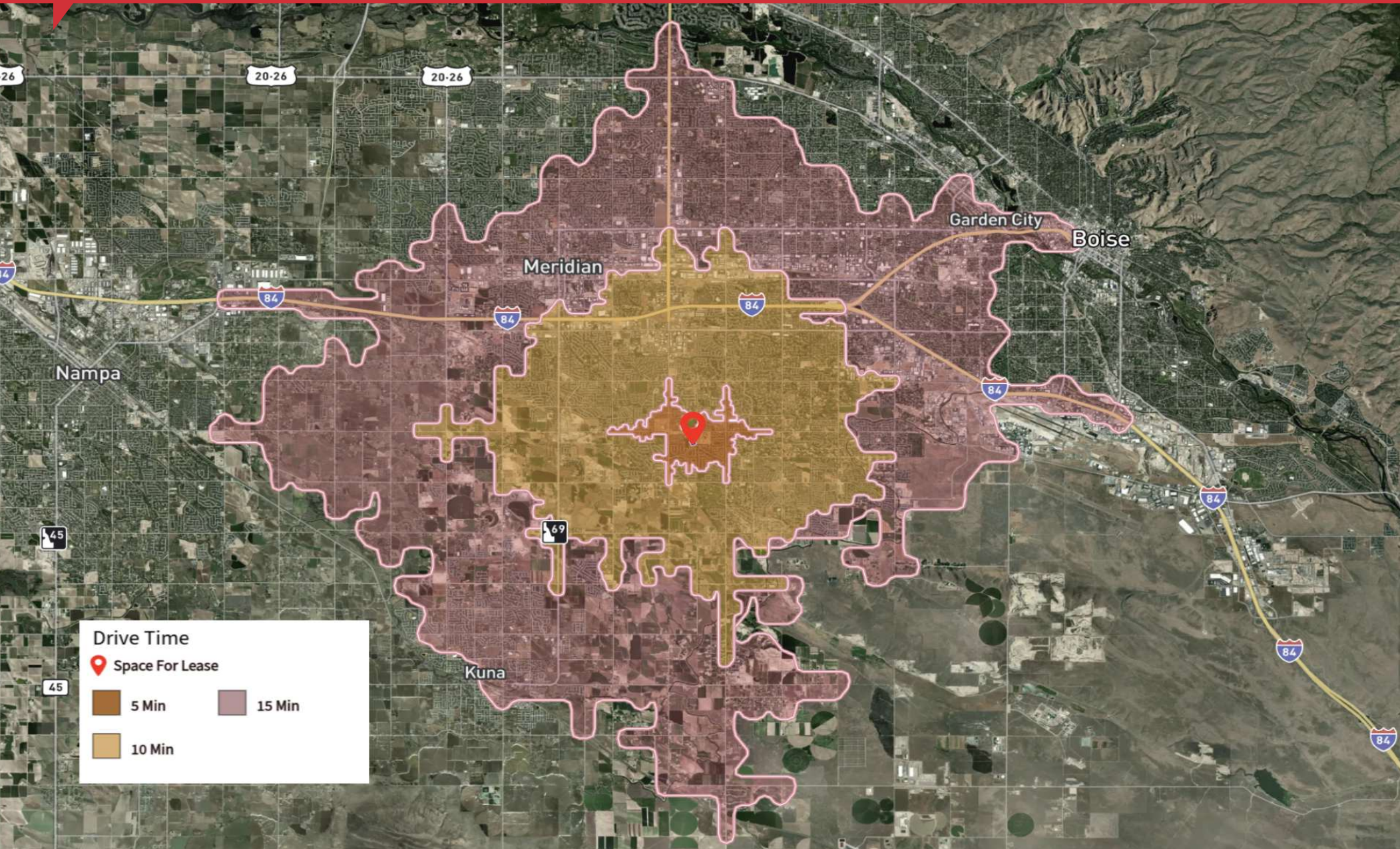


TRAVIS DUNN

208.229.6005 | travis@naiselect.com

RILEY WIEDMEIER, MBA

208.954.2229 | riley@naiselect.com

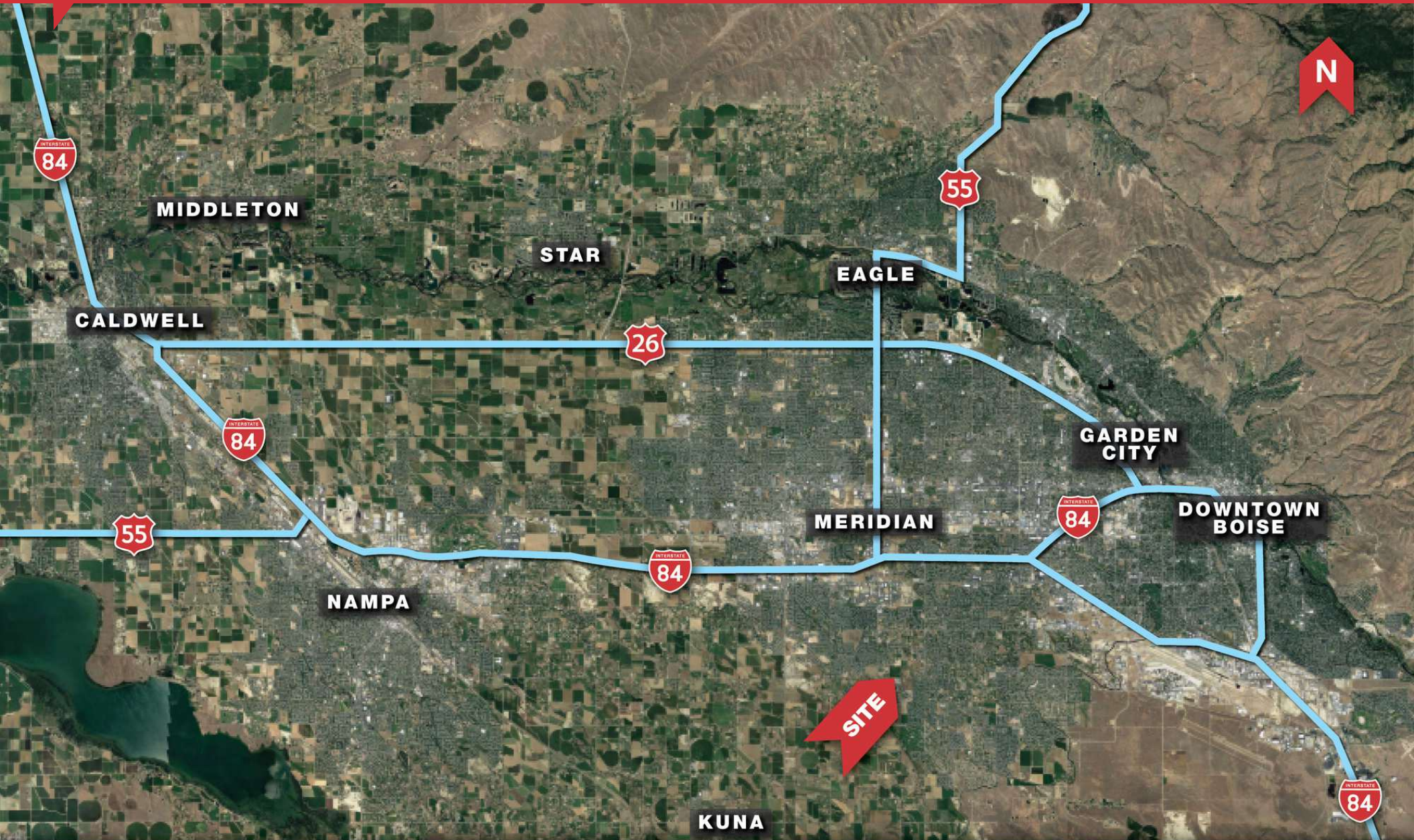


TRAVIS DUNN

208.229.6005 | travis@naiselect.com

RILEY WIEDMEIER, MBA

208.954.2229 | riley@naiselect.com



TRAVIS DUNN

208.229.6005 | travis@naiselect.com

RILEY WIEDMEIER, MBA

208.954.2229 | riley@naiselect.com