

750 SW 17th Avenue

Delray Beach, Florida 33444

±5,800 SF OFFICE/WAREHOUSE WITH YARD AVAILABLE FOR LEASE



PROPERTY HIGHLIGHTS

- + ±5,799 SF Office/Warehouse on ±1.62 Acres of Land
- + Fenced, paved, lit and secure site ideal for outside storage of equipment, materials, or vehicles
- + Direct I-95 Frontage and Visibility
- + Two (2), 10' x 12' Drive-in Doors
- + Zoned Industrial (I), City of Delray Beach
- + Located Conveniently Between Atlantic Avenue and Linton Boulevard Exits from I-95
- + Parcel ID - 12-43-46-19-00-000-1083

Contact Us

KIRK NELSON
Executive Vice President
+1 561 716 9936
kirk.nelson@cbre.com

ROBERT SMITH
Executive Vice President
+1 561 707 5558
robert.c.smith@cbre.com

Lease Rate - Call for Details

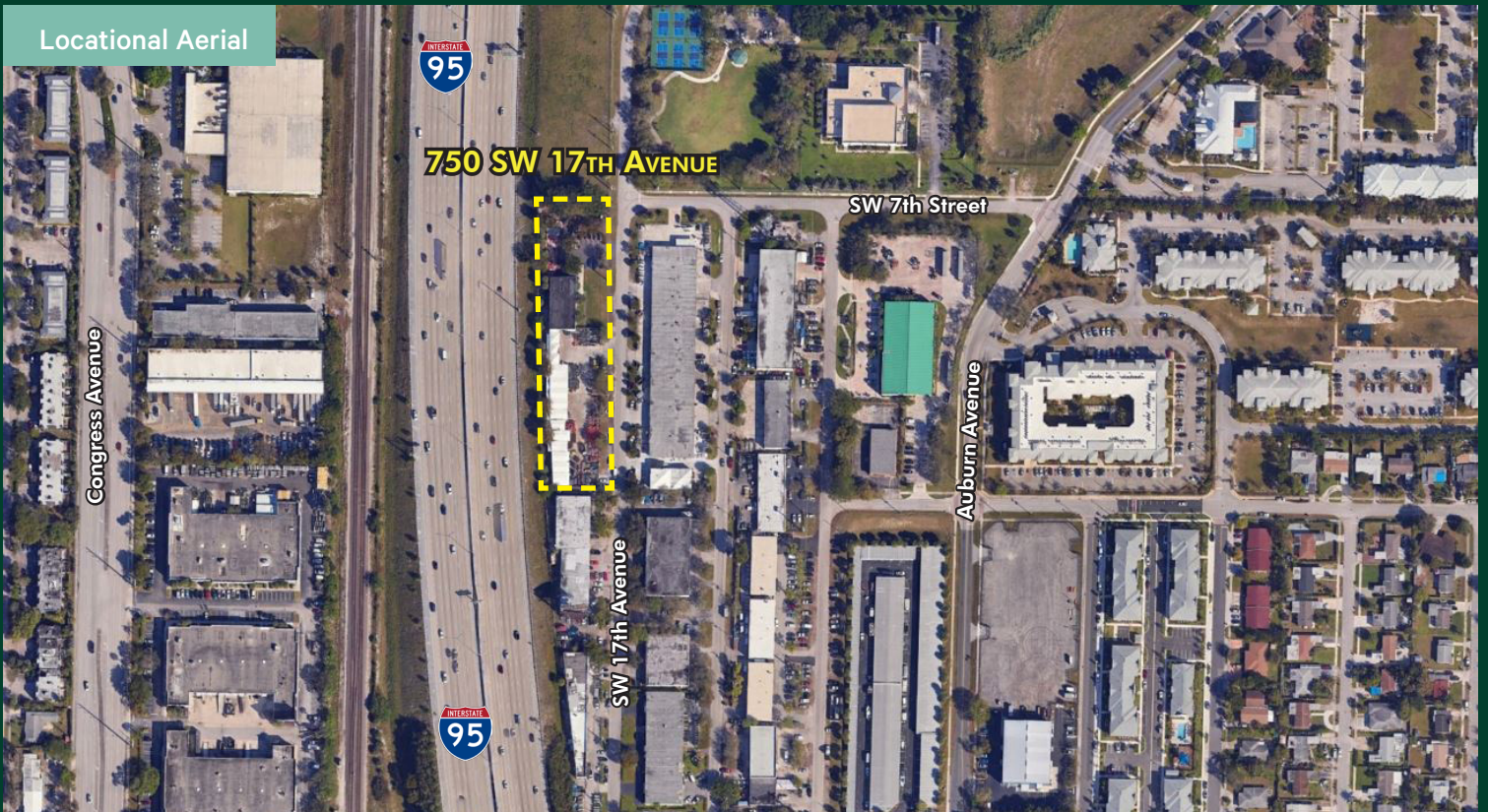
±5,800 SF AVAILABLE OFFICE/WAREHOUSE WITH YARD
750 SW 17th Avenue | Delray Beach, FL

For Lease

Additional Photos



Locational Aerial



Contact Us

KIRK NELSON

Executive Vice President
+1 561 716 9936
kirk.nelson@cbre.com

ROBERT SMITH

Executive Vice President
+1 561 707 5558
robert.c.smith@cbre.com

© 2024 CBRE, Inc. All rights reserved. This information has been obtained from sources believed reliable, but has not been verified for accuracy or completeness. You should conduct a careful, independent investigation of the property and verify all information. Any reliance on this information is solely at your own risk. CBRE and the CBRE logo are service marks of CBRE, Inc. All other marks displayed on this document are the property of their respective owners, and the use of such logos does not imply any affiliation with or endorsement of CBRE. Photos herein are the property of their respective owners. Use of these images without the express written consent of the owner is prohibited.