



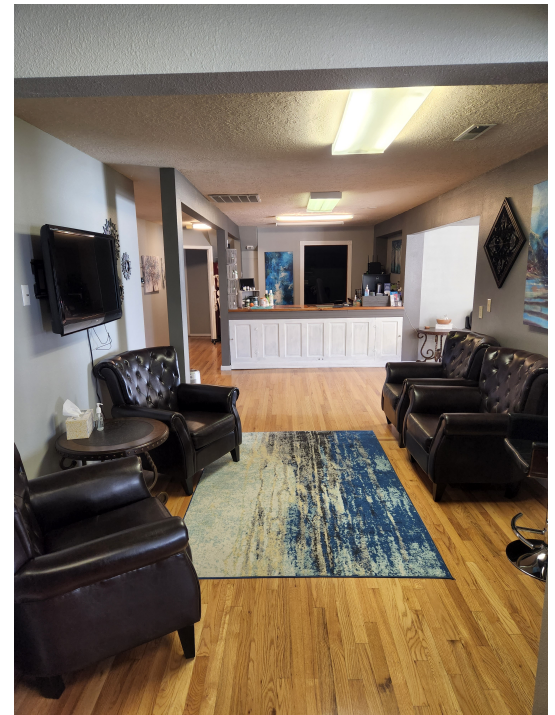
10150 NW Glencoe Rd

\$15.03 - \$15.54 /SF/YR

Now is a great time to locate your business in North Plains. The Boom of residential space (900 new homes) increases the already growing population to support new commerce.

- 4,000+ square feet with 12 private rooms 2 restrooms
- \$5,500/month to lease entire building
- 31 Private on site parking spaces for employes and clients
- Located two blocks off HWY 26 and on the main road into North Plains
- Central air heating and cooling
- For more Information

visit: <https://www.loopnet.com/Listing/10150-NW-Glencoe-Rd-North-Plains-OR/26413590/>



For more details, please call:
Ross Stadelman
 503-998-1620

Rental Rate:	\$15.03 - \$15.54 /SF/
Property Type:	YR Office
Property Subtype:	Medical
Building Class:	C
Rentable Building	4,412 SF
Area: Year Built:	1958
Walk Score ®:	52
Rental Rate Mo:	\$1.25 /SF/MO
Building zoning	C-2

1st Floor Ste North

Space Available	2,135 SF
Rental Rate	\$15.03 /SF/YR
Contiguous Area	4,412 SF
Date Available	Now
Service Type	Plus All Utilities
Built Out As	Standard Medical
Space Type	Relet
Space Use	Office/Medical
Lease Term	Negotiable

North Side of building rents for \$2,675/month plus Utilities.
The entire space can be rented by one tenant.
Customizable Monument Signage

1

1st Floor Ste South

Space Available	2,277 SF
Rental Rate	\$15.54 /SF/YR
Contiguous Area	4,412 SF
Date Available	Now
Service Type	Plus All Utilities
Built Out As	Standard Medical
Space Type	Relet
Space Use	Office/Medical
Lease Term	Negotiable

South Side of building rents for \$2,875/month plus Utilities.
The entire space can be rented by one tenant.
Customizable Monument Signage

2