

CBL Center I & CBL Center II

2030 & 2034 Hamilton Place Blvd
Chattanooga, TN

CBL Center I & CBL Center II are located on the ring road around the highly successful Hamilton Place Mall. Hamilton Place Mall is over 1,100,000 SF and one of the largest and most vibrant malls in TN. There are 130 stores and an abundance of dining options.



Property Highlights

- Class "A" office buildings
- Onsite ownership and property management
- Parking of 604 spaces
- Outdoor walking trail

Major tenants include CBL & Associates Properties, Inc., AIS Infrastructure, Signal Energy, and Chattanooga Air Pollution Bureau.

Leasing Summary

LEASE PRICE: **\$23.50 per RSF**

LEASE TYPE: **Full Service**

CBL CENTER I - 139,261 RSF (**Fully Leased**)

YEAR BUILT: **2000**

CBL CENTER II - 73,364 RSF

SUITE 200 **3,020 RSF | Second Floor**

SUITE 320 **2,577 RSF | Third Floor**

SUITE 400 **12,195 RSF | Fourth Floor**

YEAR BUILT: **2008**

📍 520 Lookout Street Chattanooga, TN 37403

📞 +1 423 267 6549

🌐 naicharter.com

**For more information,
please contact:**



David DeVaney, SIOR, CCIM, President

o: 423 308 3762

e: dfd@charterre.com

NO WARRANTY OR REPRESENTATION, EXPRESS OR IMPLIED, IS MADE AS TO THE ACCURACY OF THE INFORMATION CONTAINED HEREIN, AND THE SAME IS SUBMITTED SUBJECT TO ERRORS, OMISSIONS, CHANGE OF PRICE, RENTAL OR OTHER CONDITIONS, PRIOR SALE, LEASE OR FINANCING, OR WITHDRAWAL WITHOUT NOTICE, AND OF ANY SPECIAL LISTING CONDITIONS IMPOSED BY OUR PRINCIPALS NO WARRANTIES OR REPRESENTATIONS ARE MADE AS TO THE CONDITION OF THE PROPERTY OR ANY HAZARDS CONTAINED THEREIN ARE ANY TO BE IMPLIED.

* Not to Scale

Suite 200 - 3,020± RSF



CBL OFFICE LAYOUT
CBL CENTER II - 2nd FLOOR

AS OF: 1/31/25

C:\naicharter\2025\Drawings\2nd Floor\2nd Floor.dwg, 1/31/25, 10:00 AM, 1/31/25, 10:00 AM

* Not to Scale

CBL CENTER II

Suite 320 - 2,577± RSF



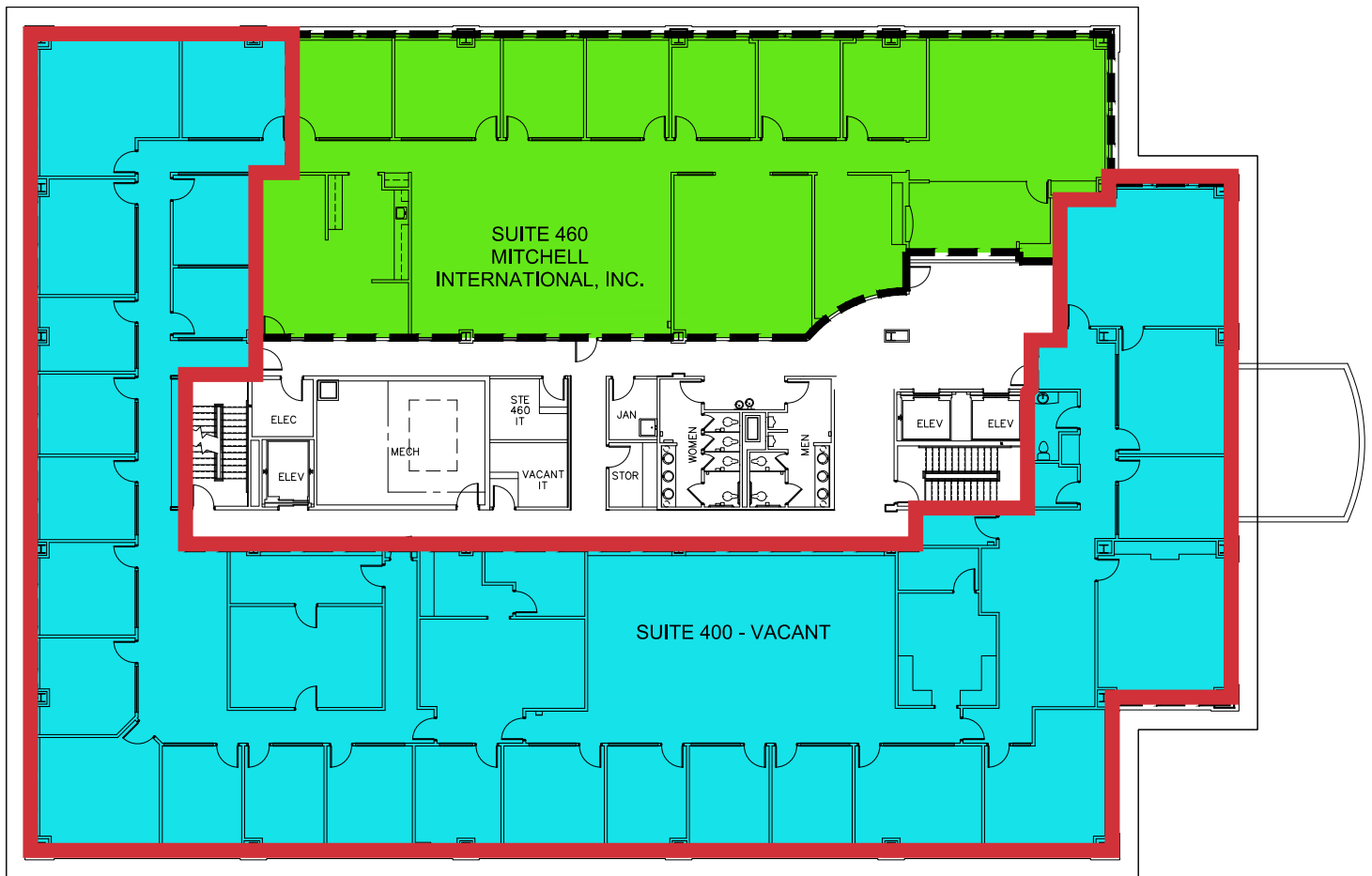
CBL OFFICE LAYOUT CBL CENTER II - 3rd FLOOR

AS OF: 1/31/25

CBL CENTER II

Suite 400 - 12,195± RSF

* Not to Scale



CBL OFFICE LAYOUT
CBL CENTER II - 4th FLOOR

AS OF: 8/01/24