

SUMMARY



RETAIL SPACE

LEASE RATE CALL FOR RATES

REMAINING SPACE

79,020 SF

PROPERTY INFORMATION

3 dock high overhead doors
 1,157 parking spaces
 18' ceiling height to deck
 Access from HWY 358, S. Padre Island Drive
 Very high traffic area

LOCATION

Near La Palmera Mall, Gulfway Shopping Center & Moore Plaza
 16 min. from CC International Airport
 3 min. to Texas A&M University-Corpus Christi
 12 min. to Naval Air Station Corpus Christi
 Centrally located on Airline Road & S. Padre Island Drive

CURRENT TENANTS

Little Woodrows
 Freedom Fitness

For more information, please contact us at:
P: 361.585.0300
E: INFO@STONEWATERPROPERTIES.COM

PHOTOS



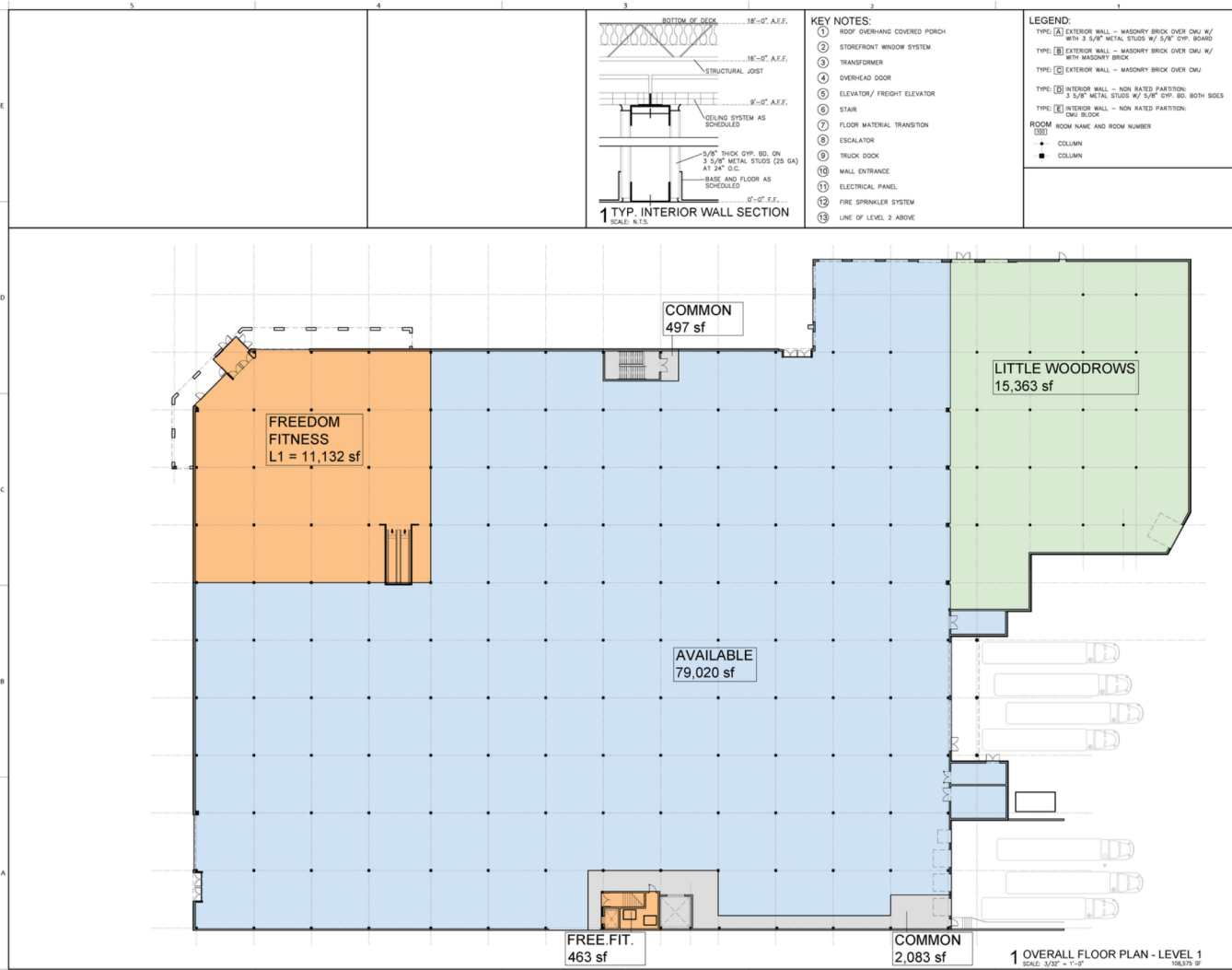
For more information, please contact us at:
P: 361.585.0300
E: INFO@STONEWATERPROPERTIES.COM

PHOTOS



For more information, please contact us at:
P: 361.585.0300
E: INFO@STONEWATERPROPERTIES.COM

FLOOR PLAN



ACS architecture | asbuilts
multifamily hospitality industrial commercial
1322 Space Park Drive
Suite B-122
Houston • Texas 77058
info@acs-architecture.com
281.787.9000 voice
Firm Registration No. BR2307

STONEWATER PROPERTIES
ACS.2020.0819



1305 AIRLINE ROAD
CORPUS CHRISTI, TX 78412

© ACS architecture | asbuilts
2021 ACS ARCHITECTURE, LLC DOCUMENTS AND INSTRUMENTS OF SERVICE ARE GIVEN IN CONFIDENCE AND REMAIN THE PROPERTY OF ACS ARCHITECTURE, LLC. THIS DOCUMENT AND THE INFORMATION CONTAINED HEREIN MAY NOT BE DUPLICATED, USED, OR DISCLOSED WITHOUT WRITTEN CONSENT OF ACS ARCHITECTURE, LLC. THIS IS AN UNPUBLISHED SURVEY DOCUMENT OFFERED BY ACS ARCHITECTURE, LLC. IT IS SUBMITTED FOR YOUR PERSONAL USE IN CONNECTION WITH THE CONTRACTED PROJECT PERFORMED BY ACS ARCHITECTURE, LLC. ALL OR ANY PART OF THE SURVEY DOCUMENT (EXCEPTING REGISTERED TRADEMARKS) REMAINS THE PROPERTY OF ACS ARCHITECTURE, LLC.

Revision Date:

| |
|--|
| |
| |
| |
| |
| |
| |
| |
| |
| |
| |

Issue/Date:

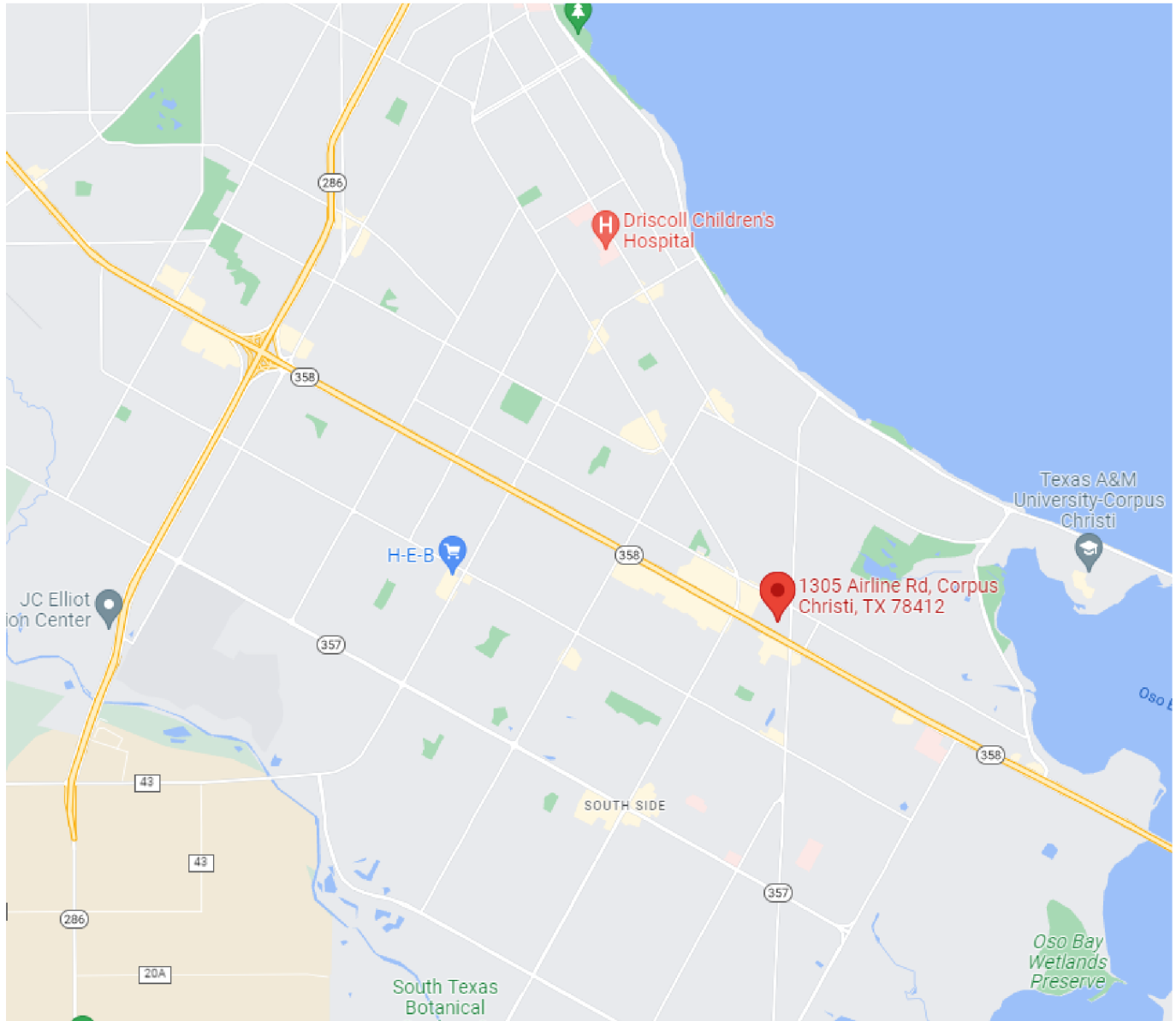
| |
|--|
| |
| |
| |
| |
| |
| |
| |
| |
| |
| |
| |

SCHEMATIC DESIGN: 11-29-2021

A2.01
OVERALL FLOOR PLAN
LEVEL 1
GENERAL INFORMATION

For more information, please contact us at:
P: 361.585.0300
E: INFO@STONEWATERPROPERTIES.COM

LOCATION



For more information, please contact us at:
P: 361.585.0300
E: INFO@STONEWATERPROPERTIES.COM

