



Offices at  
**LEVEQUE**

50 W Broad St, Columbus, OH

**Class A Office  
for Lease**



# WELCOME TO THE HISTORIC LEVEQUE TOWER

Built in 1927, the 47-story LeVeque Tower is the centerpiece of the Columbus, Ohio skyline. Located in the heart of downtown, 50 W Broad's Art Deco architecture, ornate design, and historic significance make this skyscraper an icon. Today, LeVeque tower is home to residential, hotel, retail, and of course, Class A office space. Schedule a tour today to explore this rare opportunity.

## FEATURES



2,139 SF on the 11th floor



24/7 on-site security



Walkable downtown amenities including adjacent Palace Theatre



The Keep restaurant and Starbucks on-site



Valet parking service and attached garage



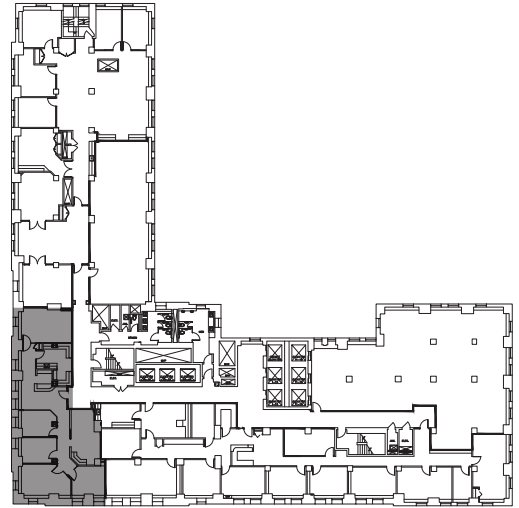
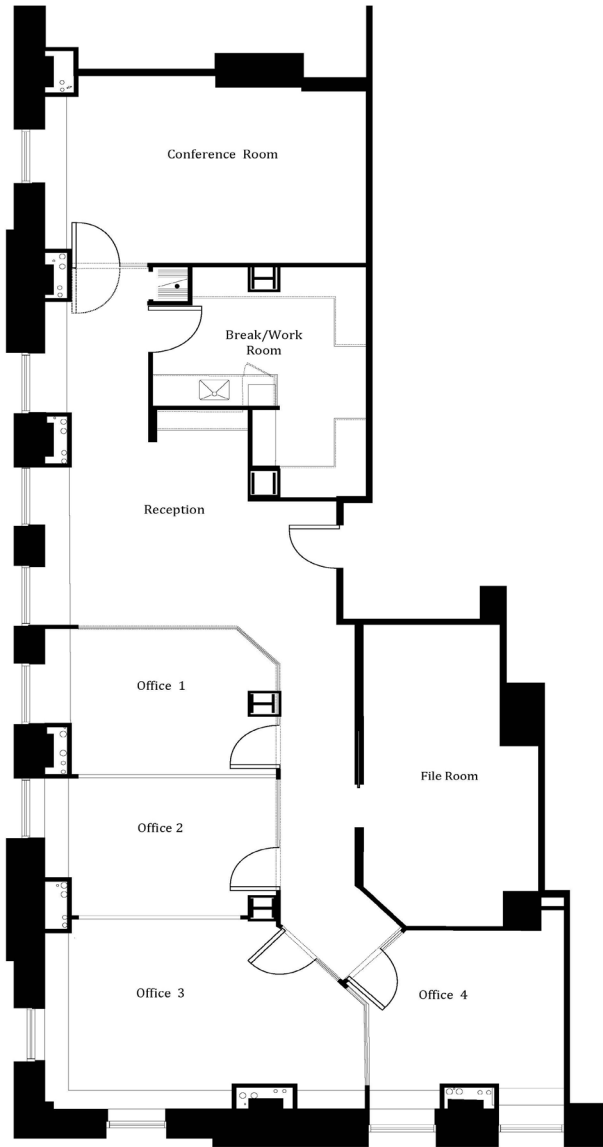
On-site Hotel LeVeque, Autograph Collection by Marriot offers 149 rooms





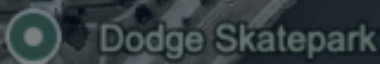
# SUITE 1118 | 2,139 SF

- 4 offices
- Conference room
- Break room





# DOWNTOWN LOCATION





Ohio Statehouse



Battelle Riverfront Park

Scioto Mile Promenade

Scioto River

E Rich St

Bicentennial Park

Front St

High St

3rd St

Front St

High St

3rd St

4th St

E Broad St

State St

E Rich St

Main St



Offices at  
**LEVEQUE**

## CONTACT

ANDY DUTCHER, SIOR

+ 1 614 460 4403

+ 1 614 425 2959

[andrew.dutcher@jll.com](mailto:andrew.dutcher@jll.com)

JOEY LAMB

+ 1 614 460 4412

+ 1 614 506 9147

[joey.lamb@jll.com](mailto:joey.lamb@jll.com)



Although information has been obtained from sources deemed reliable, JLL does not make any guarantees, warranties or representations, express or implied, as to the completeness or accuracy as to the information contained herein. Any projections, opinions, assumptions or estimates used are for example only. There may be differences between projected and actual results, and those differences may be material. JLL does not accept any liability for any loss or damage suffered by any party resulting from reliance on this information. If the recipient of this information has signed a confidentiality agreement with JLL regarding this matter, this information is subject to the terms of that agreement. ©2025 Jones Lang LaSalle Brokerage, Inc. All rights reserved.