

NEWLY RENAMED
EAST WEST BANK PLAZA

HIGHLY VISIBLE OFFICE
LOCATED ON
FIGUEROA AND 6TH
ONE OF
DTLA'S
MOST PROMINENT CORNERS

888

W.6TH STREET

LOS ANGELES, CA 90017

MOVE-IN READY SUITES AVAILABLE
FOR LEASE



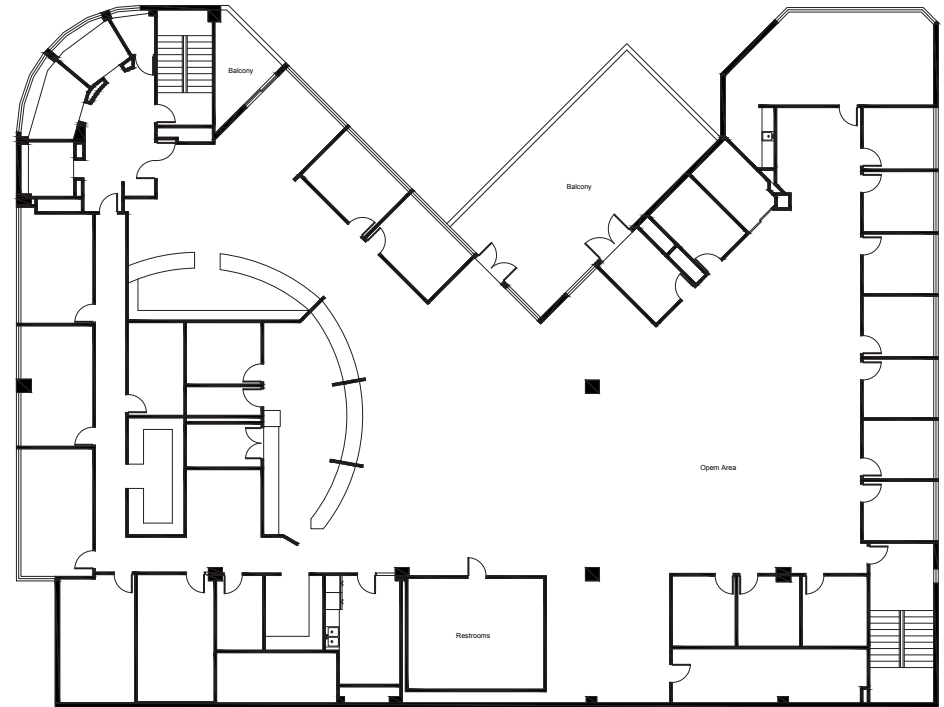


PROPERTY HIGHLIGHTS




- * **SINGLE TENANT FULL FLOORS AVAILABLE**
- * **ASKING RATE: ~~\$3.50 FSG~~ \$3.15 FSG**
- * **±6,400 SF FLOOR PLATES**
- * **PRIVATE BALCONIES ON EVERY FLOOR**
- * **±14 FT SLAB TO SLAB**
- * **MONUMENT SIGNAGE AVAILABLE**
- * **1.5/1,000 PARKING RATIO STARTING AT \$230/MONTH**

2ND FLOOR



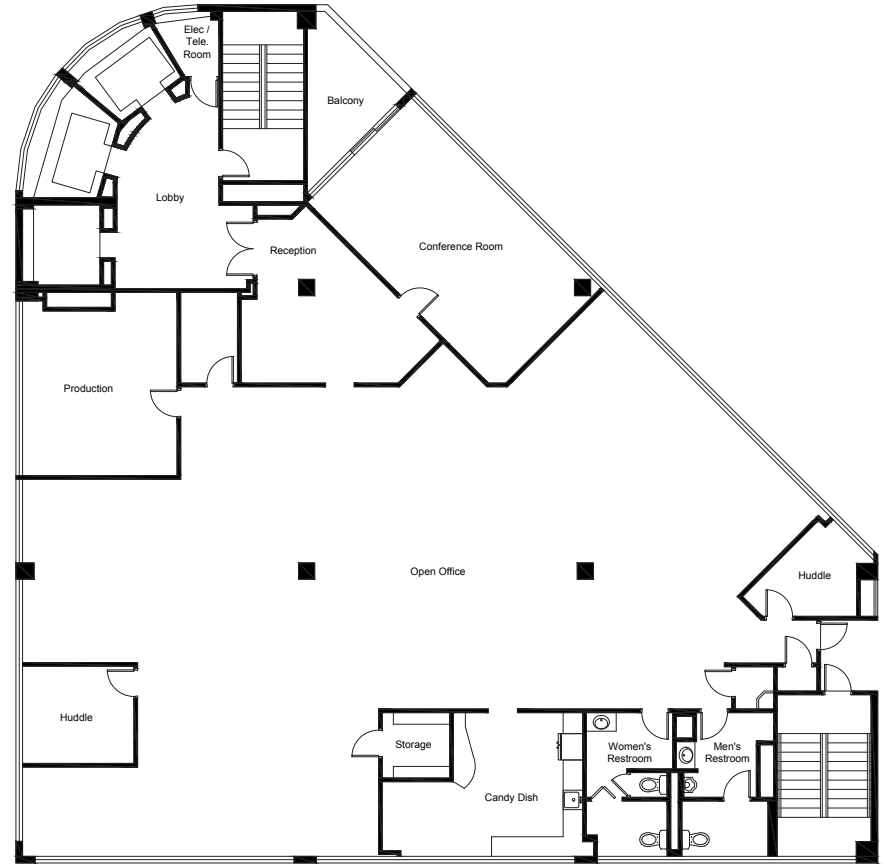

**TWO PRIVATE
BALCONIES, UNIQUE
TO DTLA**


**MOVE-IN READY
CREATIVE SPACE**


**PRIVATE OFFICES,
CONFERENCE ROOMS,
OPEN WORK AREA**

APPROX. 14,045 SF

3RD FLOOR



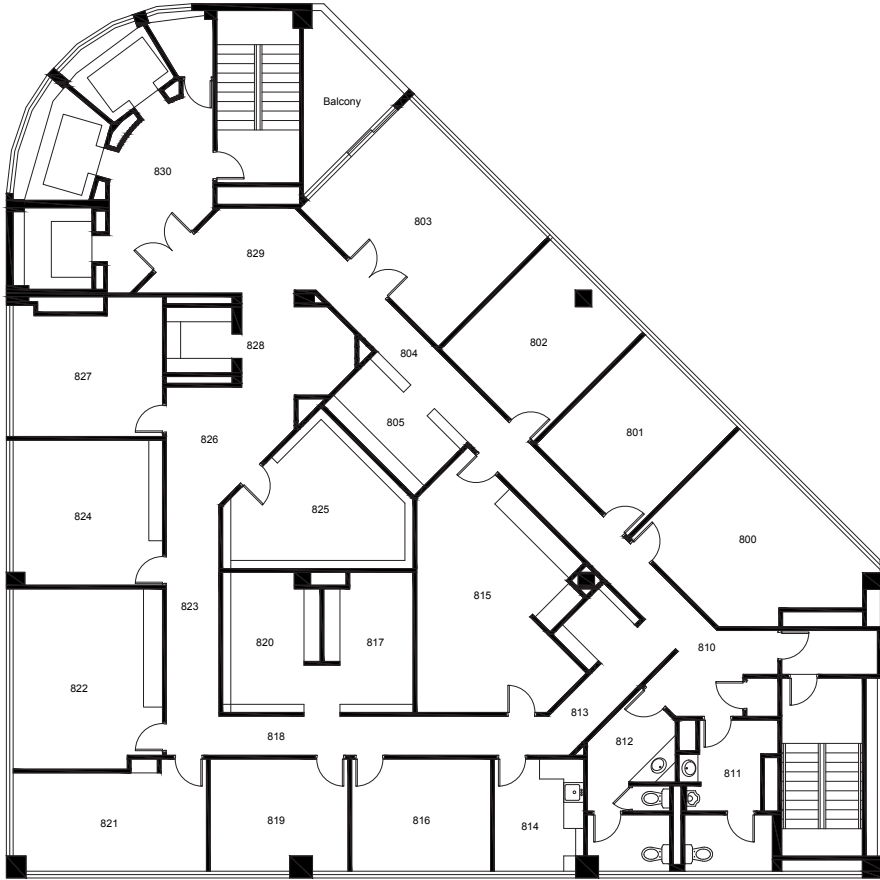
EXPANSIVE, PRIVATE
OUTDOOR PATIO THAT
WRAPS AROUND
ENTIRE SUITE

MOVE-IN
READY

MOSTLY OPEN
LAYOUT

ABILITY TO
EXPOSE HIGH
CEILINGS

APPROX. 6,382 SF



8TH FLOOR

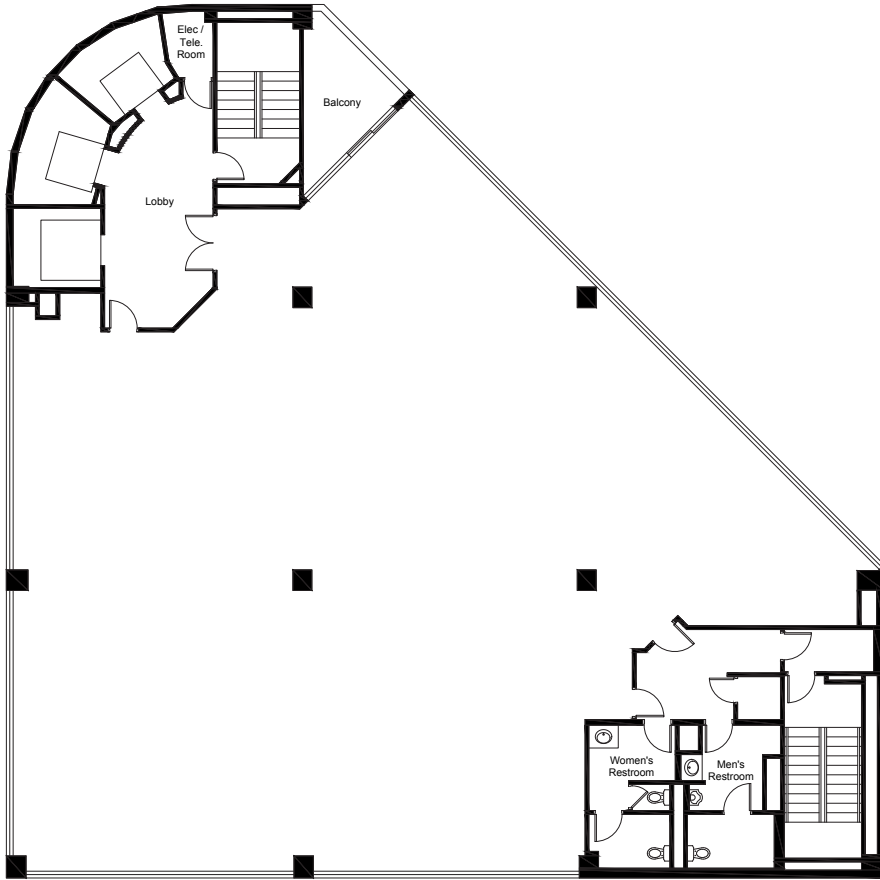
APPROX. 6,416 SF



9TH FLOOR

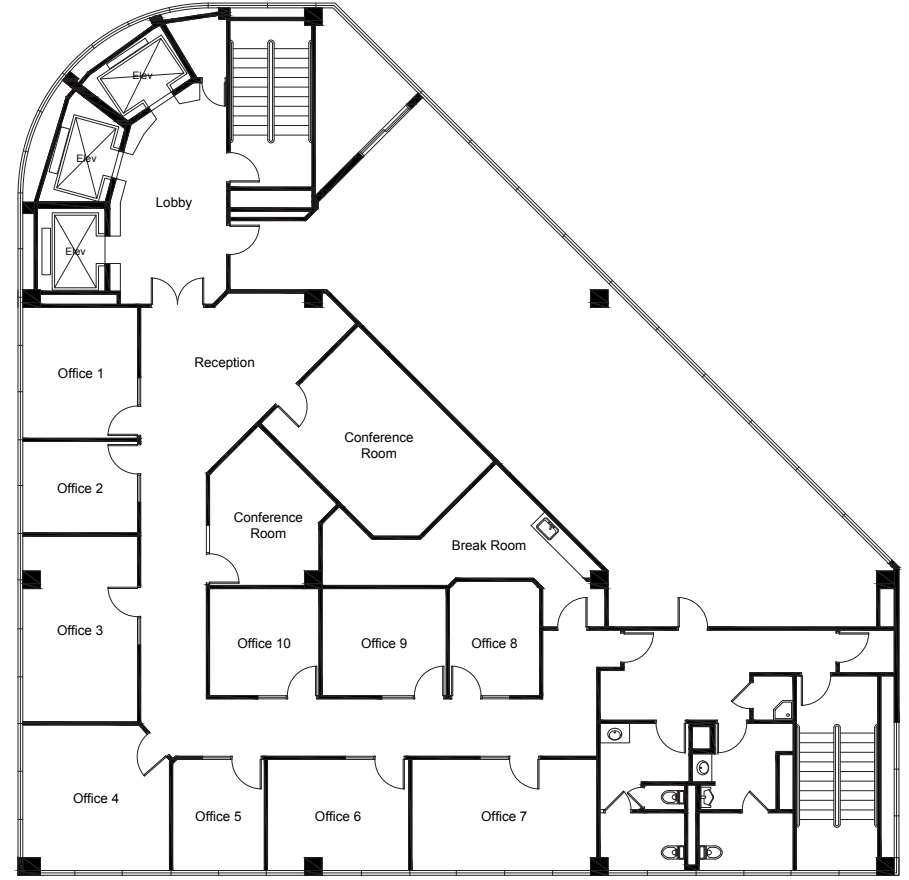
APPROX. 6,398 SF

TRADITIONAL OFFICE SPACE |
 PRIVATE BALCONY |
 ABILITY TO DEMISE |
 ABILITY TO EXPOSE HIGH CEILINGS



10TH FLOOR

APPROX. 6,413 SF



11TH FLOOR

APPROX. 4,387 SF

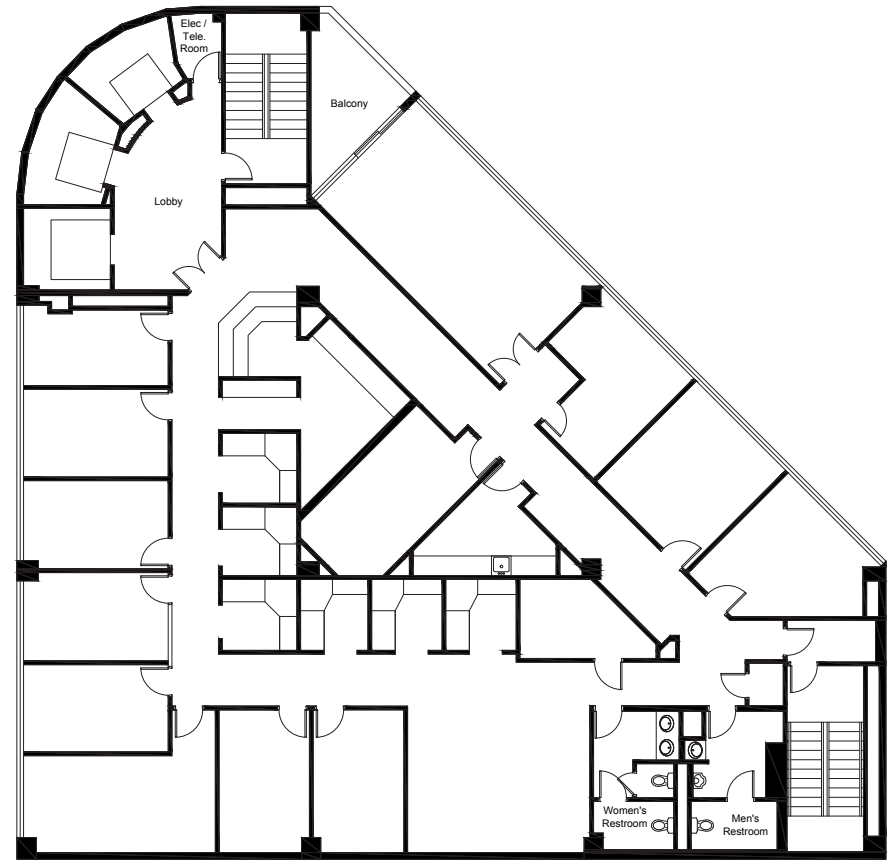
- * RAW SPACE
- * PRIVATE BALCONY
- * ABILITY TO DEMISE
- * ABILITY TO EXPOSE HIGH CEILINGS

- * PARTIAL FLOOR
- * PRIVATE BALCONY
- * SECOND GENERATION LAW FIRM SPACE
- * MOVE-IN READY



12TH FLOOR

APPROX. 6,412 SF

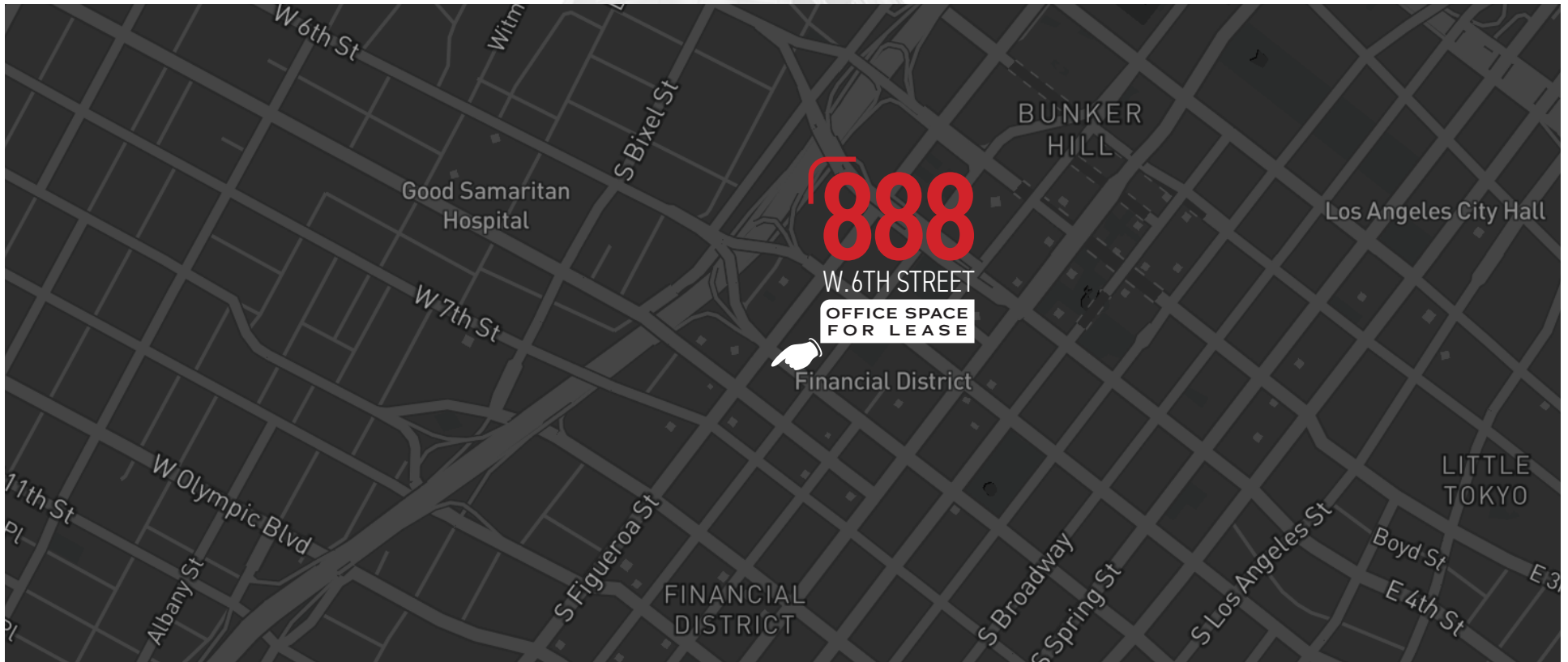


14TH FLOOR

APPROX. 6,412 SF

- ✦ MOVE-IN READY
- ✦ SECOND GENERATION CREATIVE SPACE
- ✦ PRIVATE BALCONY
- ✦ EXPOSED CEILINGS, PERIMETER OFFICES AND OPEN INTERIOR

- ✦ SECOND GENERATION LAW FIRM SPACE
- ✦ PRIVATE BALCONY
- ✦ ABILITY TO DEMISE
- ✦ ABILITY TO EXPOSE HIGH CEILINGS



CONTACTS



Chris Caras

Lic. 01229700
+1 213 613 3303
chris.caras@cbre.com

Phillip Sample

Lic. 01145593
+ 1 213 613 3301
phillip.sample@cbre.com

Phil Hauspurg

Lic. 02012230
+1 310 550 2510
phil.hauspurg@cbre.com

Brad Chelf

Lic. 00874364
+1 310 550 2582
brad.chelf@cbre.com

© 2024 CBRE, Inc. All rights reserved. This information has been obtained from sources believed reliable, but has not been verified for accuracy or completeness. You should conduct a careful, independent investigation of the property and verify all information. Any reliance on this information is solely at your own risk. CBRE and the CBRE logo are service marks of CBRE, Inc. All other marks displayed on this document are the property of their respective owners, and the use of such logos does not imply any affiliation with or endorsement of CBRE. Photos herein are the property of their respective owners. Use of these images without the express written consent of the owner is prohibited.