

FOR LEASE

1,825 SF - 6,384 SF

Premier Redmond Office Building with Hwy 126 Frontage

2464 SW Glacier Place, Redmond, OR 97756



APPROVED FOR MULTIPLE OFFICE USES



Dan Kemp, CCIM | Adam Bledsoe, Principal Broker

Emilio Tiscareno, Broker

600 SW Columbia St., Ste. 6100 | Bend, OR 97702

541.383.2444 | www.CompassCommercial.com

COMPASS
COMMERCIAL

**REAL
ESTATE
SERVICES**

FOR LEASE

\$1.40/SF/MO. NNN

Premier Redmond Office Building with Hwy 126 Frontage

PROPERTY DETAILS

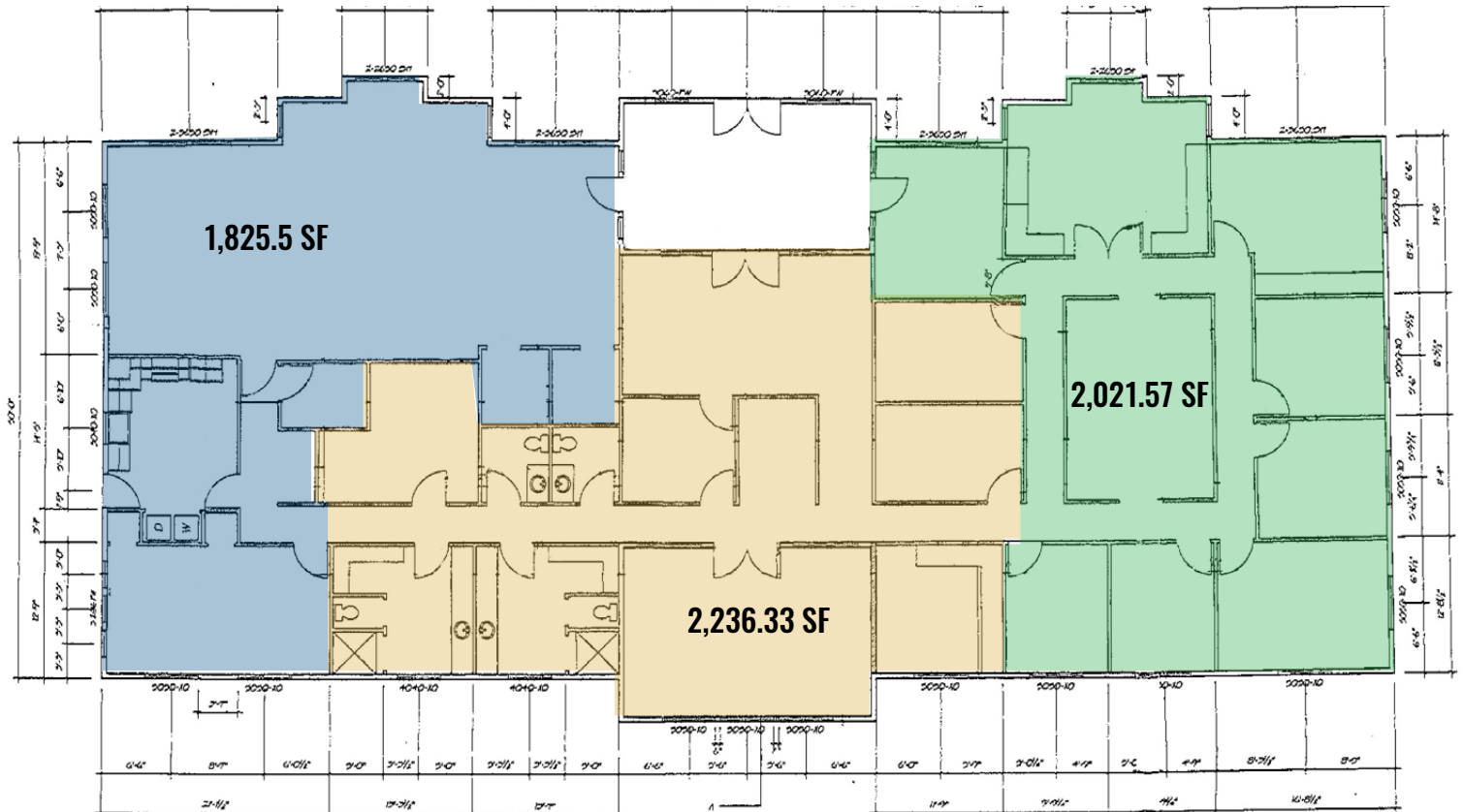
Space Avail.: 1,825 SF - 6,384 SF
Lease Rate: \$1.40/SF/Mo. NNN
CAMs: Est. at \$0.60/SF/Mo.
TI Allowance: \$25.00/SF
Bldg. Size: 6,384 SF
Lot Size: 0.57 Acre (24,680 SF)
Year Built: 2000
Zoning: Limited Service Commercial (C4)
Parking: 21 onsite spaces

HIGHLIGHTS

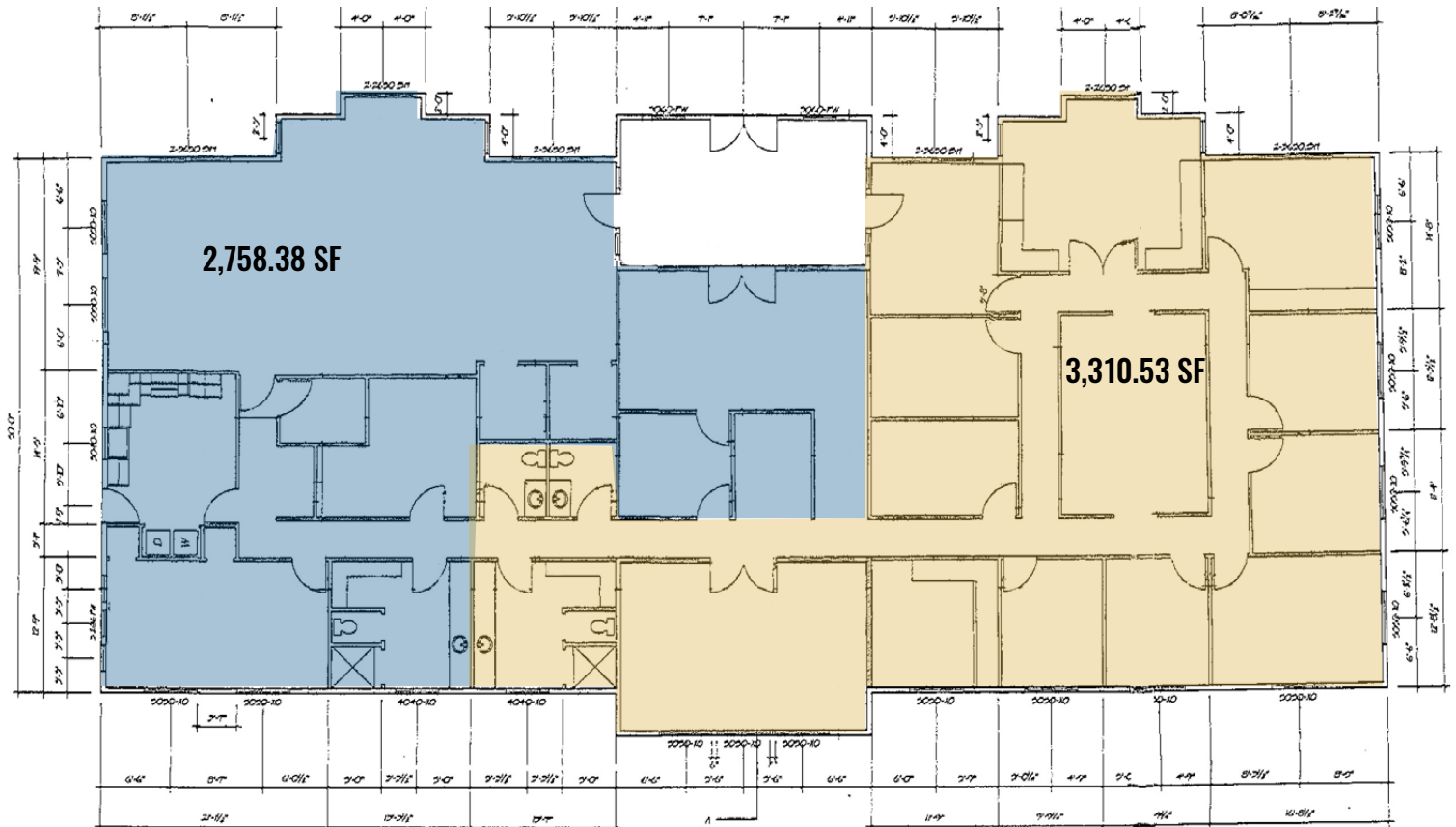
- Situated with excellent frontage on Highway 126, providing high visibility
- Contemporary architectural style with high-quality finishes throughout the building
- Patio area on side of building ideal for company events
- Several offices and work areas throughout
- Large, professionally built-out conference room, perfect for meetings and presentations
- Beautifully designed break room with fully equipped kitchen with a stove, fridge, dishwasher, and more
- Approved uses include: general office, call center, public facilities, financial institution, child care facility, veterinarian services



POTENTIAL DEMISING OPTION #1

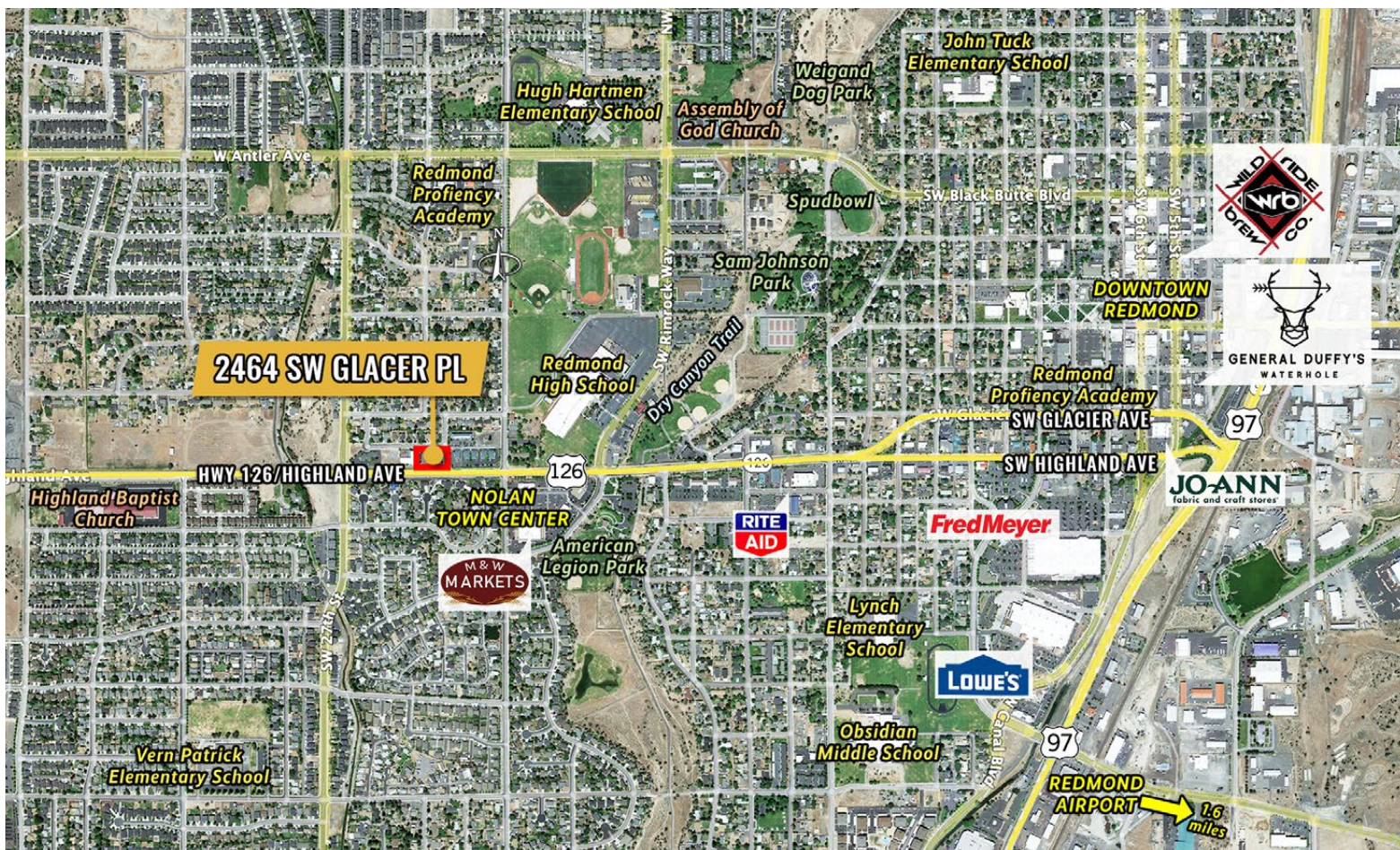


POTENTIAL DEMISING OPTION #2



FOR LEASE

2464 SW Glacier Place, Redmond, OR 97756



Brokers are licensed in the state of Oregon. This information has been furnished from sources we deem reliable, but for which we assume no liability. This is an exclusive listing. The information contained herein is given in confidence with the understanding that all negotiations pertaining to this property be handled through Compass Commercial Real Estate Services. All measurements are approximate.



Dan Kemp, CCIM
Partner, Principal Broker
Cell 541.550.8413
dkemp@compasscommercial.com



Adam Bledsoe
Principal Broker
Cell 541-915-5669
abledsoe@compasscommercial.com



Emilio Tiscareno
Broker
Cell 541.213.9640
etiscareno@compasscommercial.com

COMPASS
COMMERCIAL
REAL ESTATE
SERVICES