

FOR LEASE

Crossroads East

11160 Hudson Blvd N, Lake Elmo MN 55042



PROPERTY DETAILS

- Conveniently located at Lake Elmo Blvd and Hudson Blvd along 94 in Lake Elmo
- Local ownership and onsite Property Management
- Building Size: 148,999 SF
- Year built 2022
- 20' clear
- Building signage available
- Secured outdoor parking

LISTING DETAILS

- Suite 135 (3,898 SF Gross)
- Private bathroom
- 1 dock and 1 drive-in door
- Bay size 32' X 120'
- Monthly Rent: \$5,197.00 (\$16.00/SF Modified Gross)
- Separately metered gas/electric

LOCATION



CROSSROADS
PROPERTIES

Dawn Wessels/Amy Johnson/Steve Poechmann

651-731-0708 Option 2 For Sales and Leasing

7250 Hudson Boulevard N, Suite 160, Oakdale, MN 55128

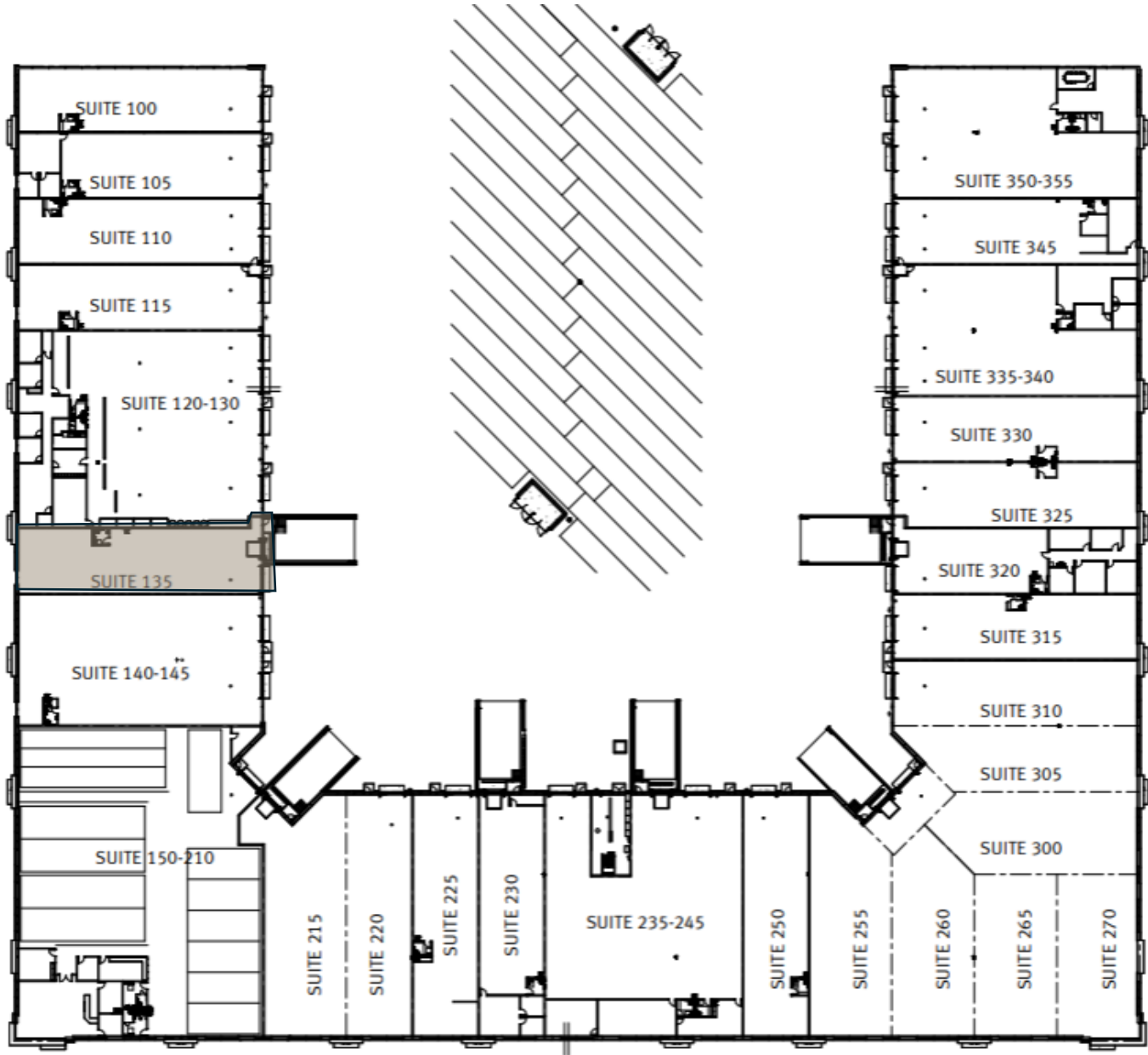
www.crossroadsproperties.net

FOR LEASE

Crossroads East

11160 Hudson Blvd N, Lake Elmo MN 55042

Building Plan



CROSSROADS
PROPERTIES

Dawn Wessels/Amy Johnson/Steve Poechmann

651-731-0708 Option 2 For Sales and Leasing

7250 Hudson Boulevard N, Suite 160, Oakdale, MN 55128

www.crossroadsproperties.net