

FD. PK NAIL, FLUSH.

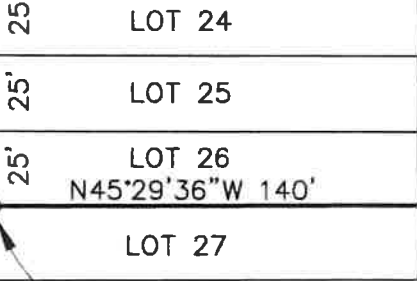
MERCEDES STREET

SIXTH STREET

N44°27'43"E 470.82' (470.00')

190.06' (190.00')

40'



1" = 60'

BLK. 22
MB 15/726 S.D. CO.

SET 4' WOODEN LATH
AT SPRAY PAINT

FD. 1 1/4" IP, DN. 6"

FRONT STREET

FD. SPINDLE & WASHER TAGGED
LS 7161, FLUSH, PER CR 08-0026

Mark W. Christensen 4/26/18
MARK W. CHRISTENSEN LS 5266

