



FOR SALE

9011 NW SOUTH RIVER DR.
MEDLEY, FL 33166
WATERFRONT INDUSTRIAL LAND



OVERVIEW

Opportunity to acquire an affordably priced waterfront lot, strategically located in the industrial hub of Medley. Situated near major thoroughfares such as the Palmetto Expressway and Okeechobee Road, the property offers excellent connectivity for businesses. It is also a stable buy and hold for an investor seeking waterfront land at a low price. The property has frontage on River Drive as well as frontage on the river adjacent to Okeechobee Road. Okeechobee Road sees 60,500 vehicles per day.

SITE SUMMARY

ASKING PRICE: \$475,000

LOT SIZE: 10,116 SF

ZONING: M-1/Industrial

HIGHLIGHTS

- . PROXIMITY TO KEY HIGHWAYS AND ROADS
- . ACCESSIBILITY
- . MAJOR EXPOSURE

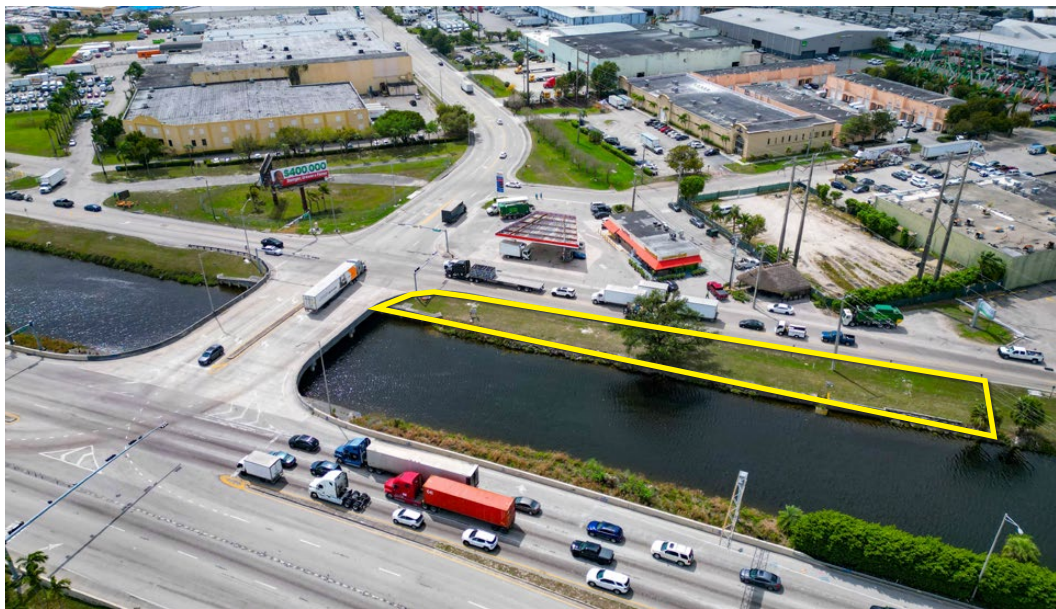
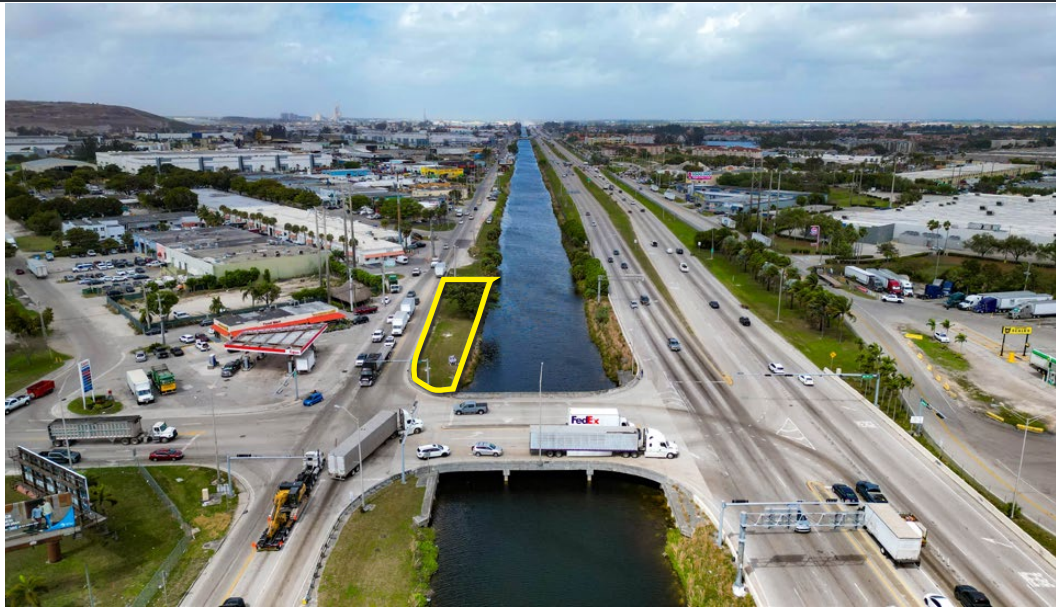
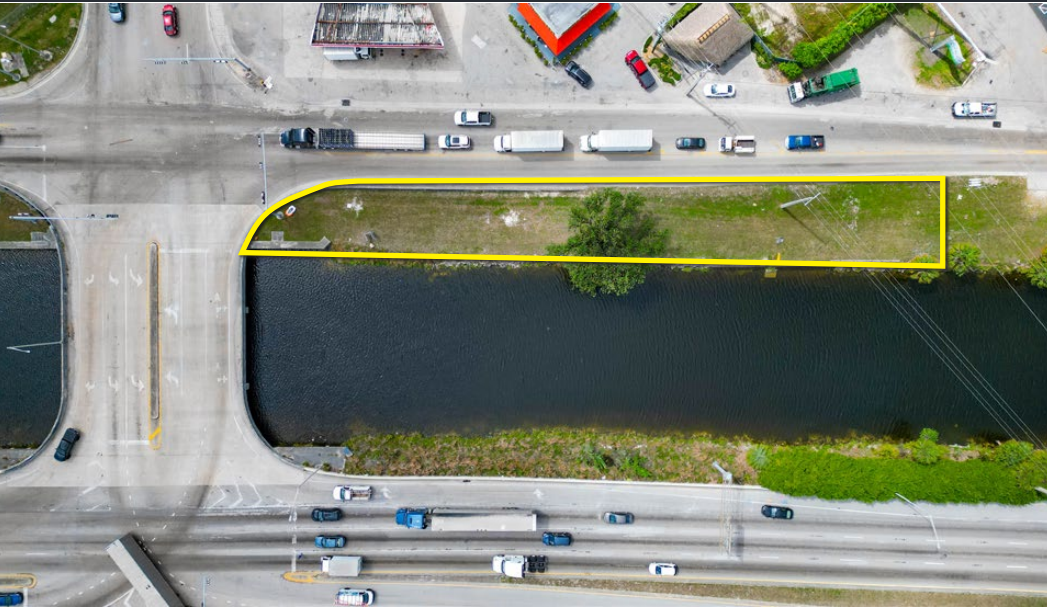


9011 NW S RIVER DRIVE - MEDLEY, FL 33166

BRIAN PINEIRO | COMMERCIAL ADVISOR | 786.382.9900
ALEX TSOULFAS | PRESIDENT | 305.972.7217

This information has been obtained from sources believed reliable. We have not verified it and make no guarantee, warranty or representation about it.

AERIAL IMAGES



9011 NW S RIVER DRIVE - MEDLEY, FL 33166

BRIAN PINEIRO | COMMERCIAL ADVISOR | 786.382.9900

ALEX TSOULFAS | PRESIDENT | 305.972.7217

This information has been obtained from sources believed reliable. We have not verified it and make no guarantee, warranty or representation about it.



BRIAN PINEIRO
COMMERCIAL ADVISOR
BRIAN@STL-ADVISORS.COM
786.382.9900

ALEX TSOULFAS
PRESIDENT
ALEX@STL-ADVISORS.COM
305.972.7217