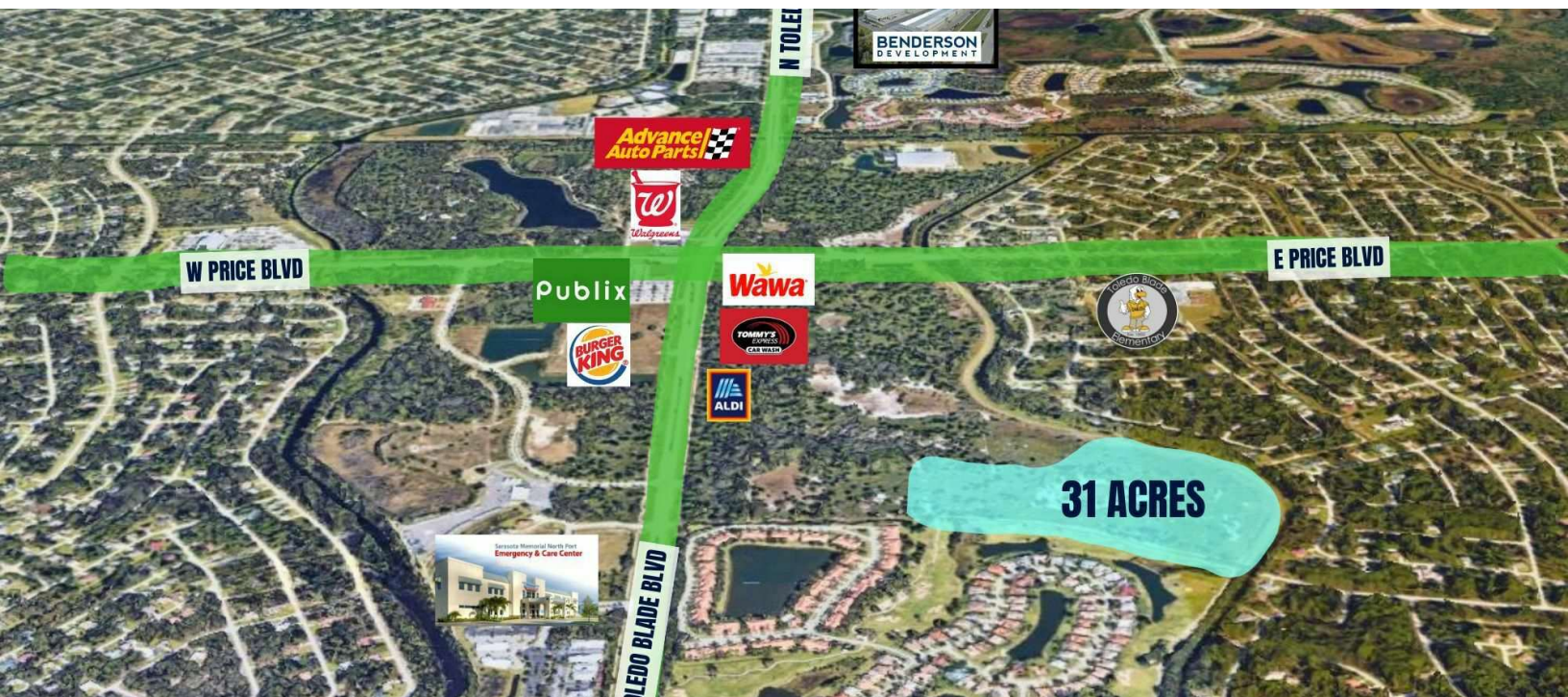


Truman Park - Multi Family Development Opportunity

S Toledo Blade Blvd, North Port, FL 34288

Land For
Sale



VIDEO

Property Description

31 Acre mixed-use Retail & Multi-Family Development Opportunity. Subject property allows for 269 multi-family units plus general commercial space. Located in the rapidly growing community of North Port. Subject is located just off Toledo Blade Blvd, south of E Price Blvd. It's located near Toledo Blade Elementary and Sarasota Memorial Hospital's Emergency Care Center.

OFFERING SUMMARY

Sale Price:	\$6,600,000
Lot Size:	31 Acres

DEMOGRAPHICS	1 MILE	3 MILES	5 MILES
Total Households	1,613	14,751	34,517
Total Population	4,319	39,091	87,158
Average HH Income	\$102,252	\$98,157	\$89,837



Loyd Robbins

Principal Broker
(941)-356-9659
loyd@rerobbins.com

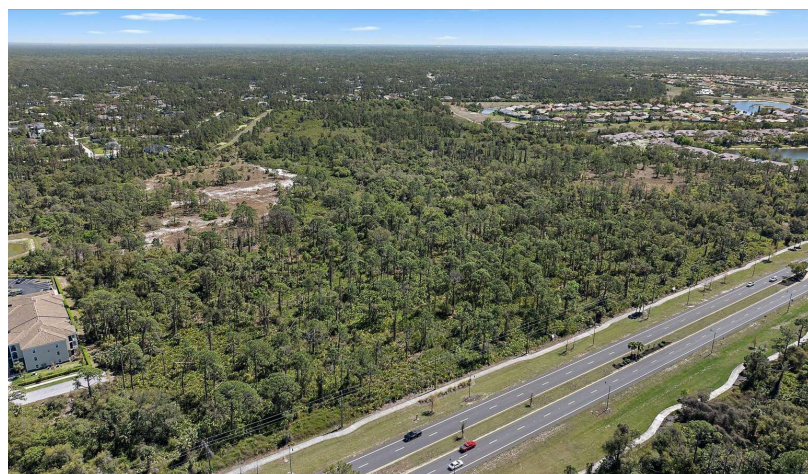


3580 S. Tuttle Ave
Sarasota FL 34239
www.rerobbins.com

31 Acres

Land For
Sale

S Toledo Blade Blvd, North Port, FL 34288



Loyd Robbins

Principal Broker
(941)-356-9659
loyd@rerobbins.com



3580 S. Tuttle Ave
Sarasota FL 34239

www.rerobbins.com

Rapidly Growing Market

Land For
Sale

S Toledo Blade Blvd, North Port, FL 34288



Loyd Robbins

Principal Broker
(941)-356-9659
loyd@rerobbins.com

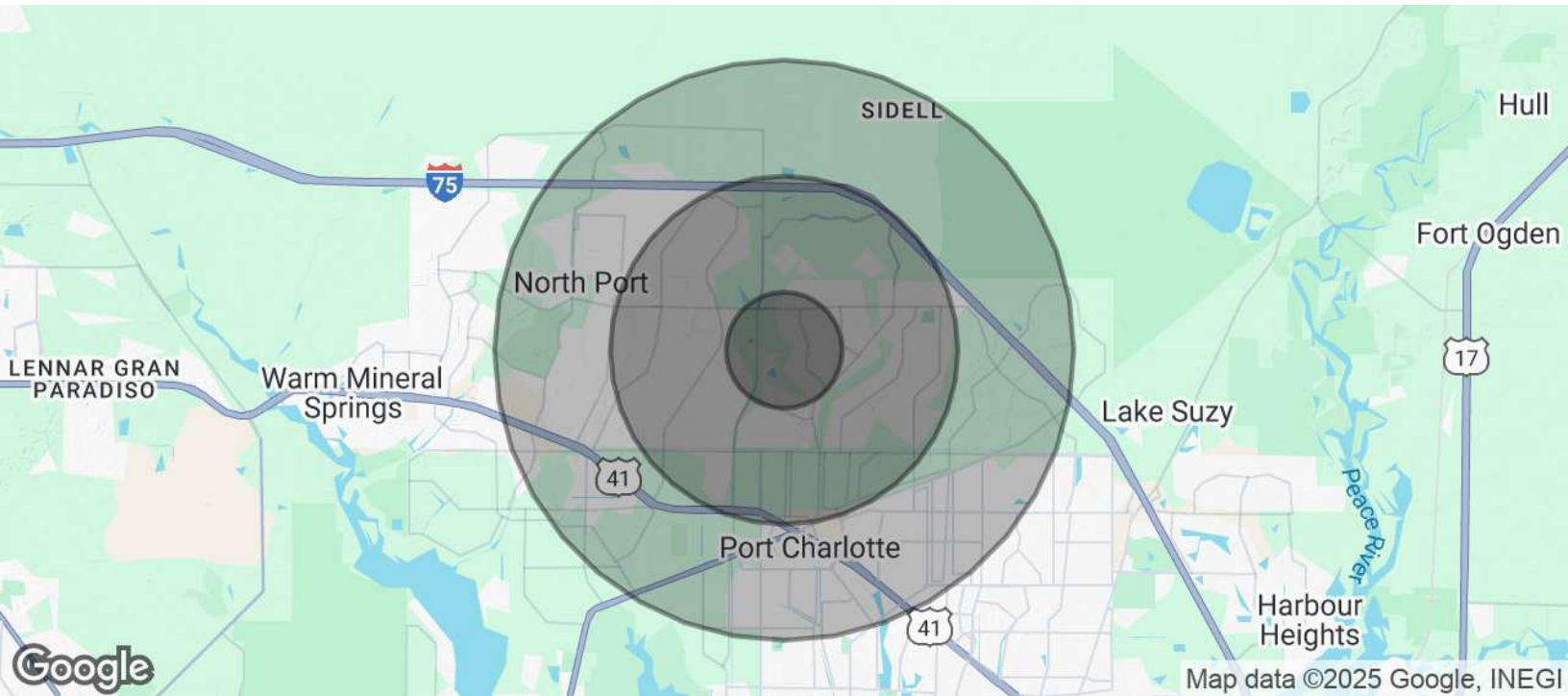


3580 S. Tuttle Ave
Sarasota FL 34239
www.rerobbins.com

North Port is the 2nd Fastest Growing City in the U.S.

S Toledo Blade Blvd, North Port, FL 34288

Land For
Sale



POPULATION	1 MILE	3 MILES	5 MILES
Total Population	4,319	39,091	87,158
Average Age	45	44	47
Average Age (Male)	44	43	46
Average Age (Female)	45	45	48

HOUSEHOLDS & INCOME	1 MILE	3 MILES	5 MILES
Total Households	1,613	14,751	34,517
# of Persons per HH	2.7	2.7	2.5
Average HH Income	\$102,252	\$98,157	\$89,837
Average House Value	\$504,282	\$354,241	\$334,303

Demographics data derived from AlphaMap



Loyd Robbins

Principal Broker
(941)-356-9659
loyd@rerobbins.com



3580 S. Tuttle Ave
Sarasota FL 34239

www.rerobbins.com