



For Lease-Storey Law Office Building

SUITE #330: 221 NE IVANHOE BLVD, ORLANDO, FL 32804

Property Highlights

- ✓ 1,524 SF Professional Office Suite – Flexible space for teams or individual professionals.
- ✓ 4 Private Offices + 1 Conference Room – Can be leased as a full suite or individual executive offices.
- ✓ Prime Location in Ivanhoe Village – Easy access to I-4, downtown Orlando, and Winter Park.
- ✓ Co-Working Potential – Ideal for startups, remote workers, or shared office environments.

FOR MORE INFORMATION | [MILLENNIA-PARTNERS.COM](https://millenia-partners.com)

PRESENTED BY
ANTHONY GIEBEL

407.201.0000
agiebel@millenia-partners.com



EXECUTIVE SUMMARY

221 NE IVANHOE BLVD, ORLANDO, FL 32804

Storey Law Office Building



Lease Rate

\$24 SF / NNN

OFFERING SUMMARY

Building Size:	11,256 SF
Available SF:	1,524 SF
Lot Size:	0.38 Acres
Year Built:	1986
Zoning:	MU-2/T/SP

PROPERTY OVERVIEW

Elevate your business in a premier office suite at 221 NE Ivanhoe Blvd, Suite #330! This 1,524 SF office space offers a perfect blend of privacy, functionality, and a professional atmosphere in the heart of Orlando's thriving Ivanhoe Village district.

KEY FEATURES:

- Four Private Offices – Ideal for executives, managers, or private workspaces.
 - Spacious Conference Room – Perfect for team meetings, client presentations, and collaboration.
 - Flexible Layout – Designed for efficiency, maximizing productivity and workflow.
 - Large Windows & Natural Light – Enhance the workspace with an inspiring, bright atmosphere.
 - Convenient Location – Easy access to I-4, downtown Orlando, College Park, and Winter Park.
- This suite is perfect for professional service firms, creative agencies, financial firms, or tech companies looking for a modern, well-located office space. Move-in ready and available for immediate lease!

PRESENTED BY
ANTHONY GIEBEL
407.201.0000
agiebel@millenia-partners.com

OFFICE BUILDING

For Lease

ADDITIONAL PHOTOS

221 NE IVANHOE BLVD, ORLANDO, FL 32804

Storey Law Office Building



PRESENTED BY
ANTHONY GIEBEL
407.201.0000
agiebel@millenia-partners.com

OFFICE BUILDING

For Lease

LOCATION MAP

221 NE IVANHOE BLVD, ORLANDO, FL 32804

Storey Law Office Building



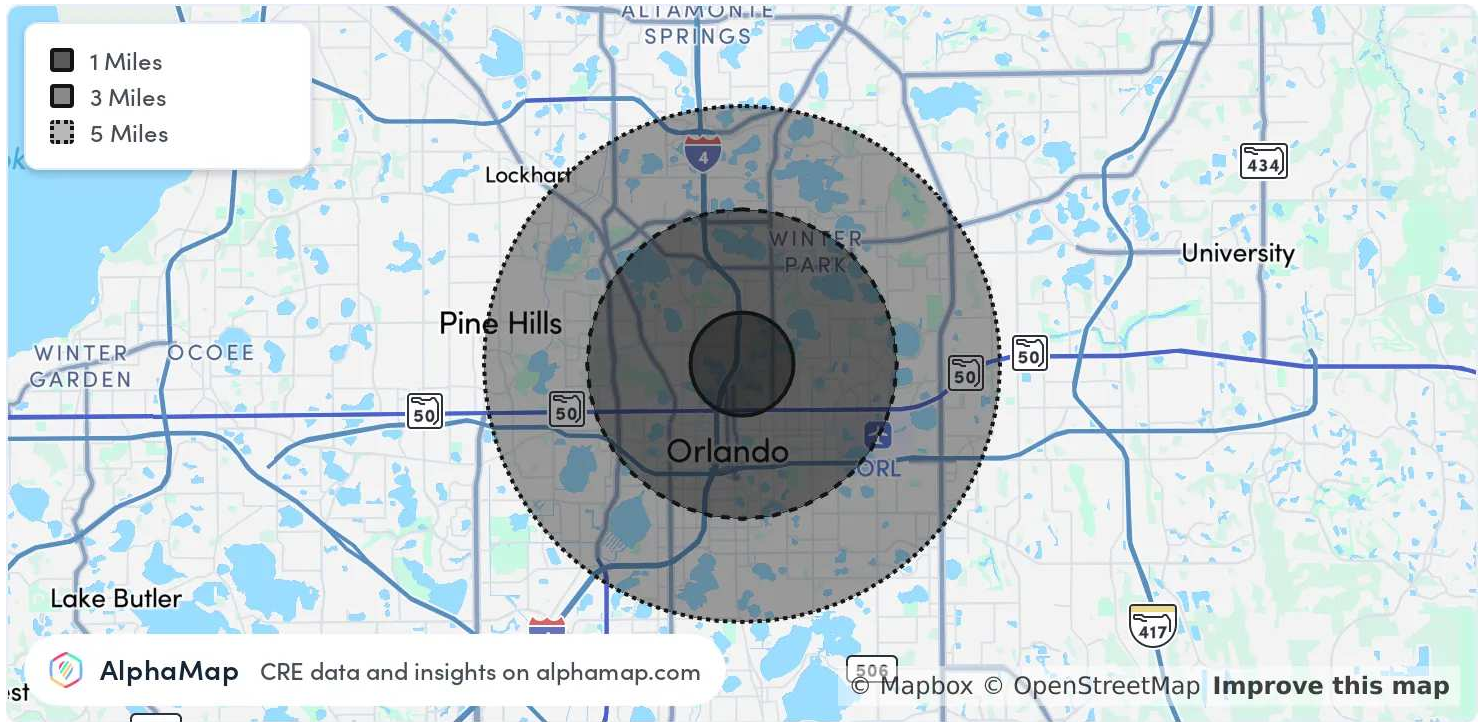
PRESENTED BY
ANTHONY GIEBEL
407.201.0000
agiebel@millenia-partners.com

OFFICE BUILDING
For Lease

AREA ANALYTICS

221 NE IVANHOE BLVD, ORLANDO, FL 32804

Storey Law Office Building



POPULATION	1 MILE	3 MILES	5 MILES
Total Population	11,896	95,469	293,220
Average Age	39	42	41
Average Age (Male)	39	41	40
Average Age (Female)	39	43	42

HOUSEHOLD & INCOME	1 MILE	3 MILES	5 MILES
Total Households	6,399	46,881	125,189
Persons per HH	1.9	2	2.3
Average HH Income	\$132,466	\$129,506	\$102,978
Average House Value	\$561,712	\$608,924	\$463,105
Per Capita Income	\$69,718	\$64,753	\$44,773

Map and demographics data derived from AlphaMap

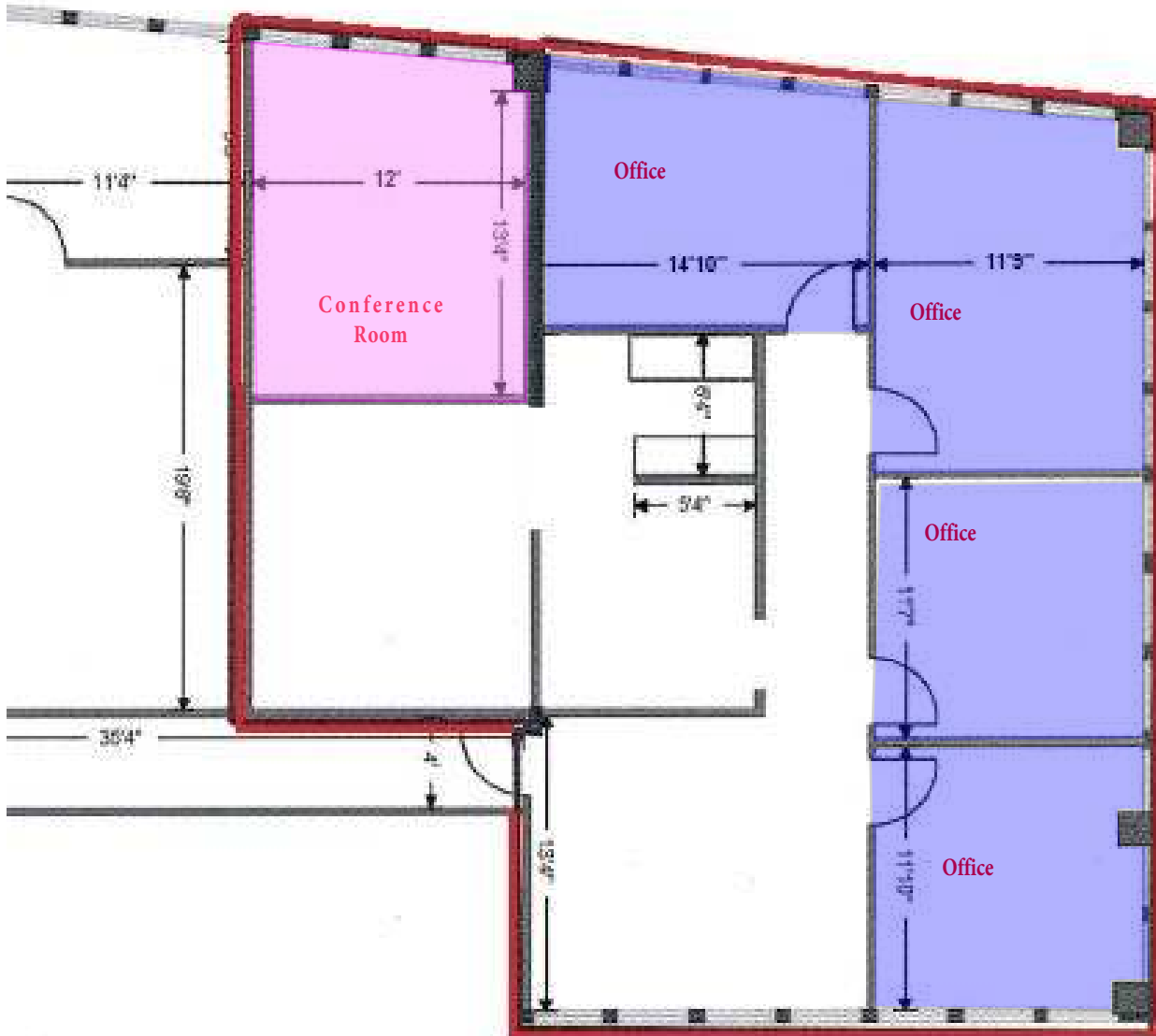
PRESENTED BY
ANTHONY GIEBEL
407.201.0000
agiebel@millenia-partners.com

OFFICE BUILDING
For Lease

FLOOR PLANS

221 NE IVANHOE BLVD, ORLANDO, FL 32804

Storey Law Office Building



PRESENTED BY
ANTHONY GIEBEL
407.201.0000
agiebel@millenia-partners.com

OFFICE BUILDING

For Lease