

LCG  
CAPITAL  
MANAGEMENT



**9841 CLAYTON RD  
LADUE, MISSOURI**

FOR SALE OR LEASE

# 9841 CLAYTON ROAD

## FLOOR PLANS

**TOMMY LEONARD**

314.408.7400 (OFFICE)

314.675.5240 (MOBILE)

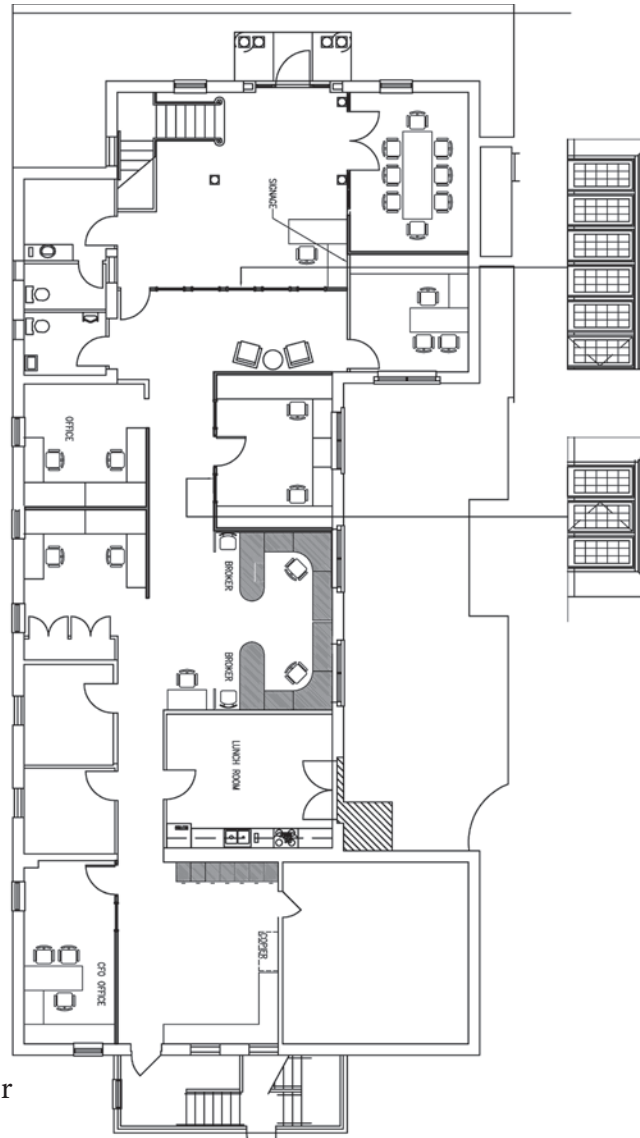
TLeonard@LCGCap.com

**ROB GOLTERMANN**

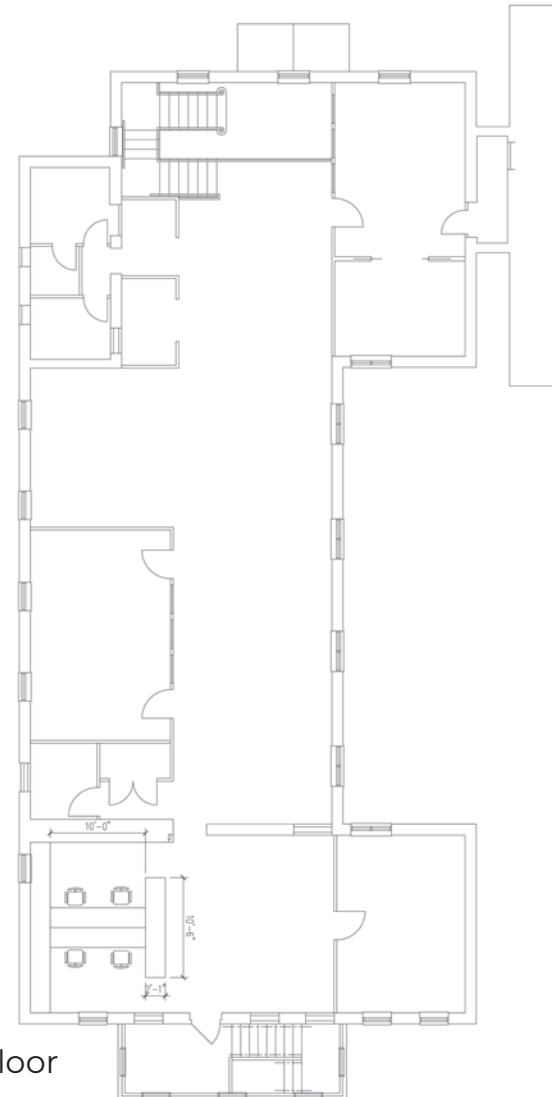
314.408.7400 (OFFICE)

314.267.7497 (MOBILE)

Rob@LCGCap.com



1st Floor



2nd Floor

# 9841 CLAYTON ROAD

## MARKET AERIAL

**TOMMY LEONARD**

314.408.7400 (OFFICE)

314.675.5240 (MOBILE)

TLeonard@LCGCap.com

**ROB COLTERMANN**

314.408.7400 (OFFICE)

314.267.7497 (MOBILE)

Rob@LCGCap.com



- FOR SALE: \$3,300,000
- FOR LEASE: \$35.00 PSF NNN
- 8,180 SF
- UNIQUE OPPORTUNITY FOR A FREESTANDING BUILDING IN THIS SUBMARKET
- LOCATED IN THE HEART OF LADUE ON CLAYTON ROAD
- AMPLE PARKING
- CONVENIENT I-64 ACCESS
- AMPLE PARKING
- GREAT FOR RETAIL, FINANCIAL INSTITUTION OR GENERAL OFFICE

**LCG CAPITAL  
MANAGEMENT**

[www.LCGCap.com](http://www.LCGCap.com)

THE INFORMATION IN THIS FLYER HAS BEEN OBTAINED FROM SOURCES BELIEVED RELIABLE. WHILE WE DO NOT DOUBT ITS ACCURACY, WE HAVE NOT VERIFIED IT AND MAKE NO GUARANTEE ABOUT IT. IT IS YOUR RESPONSIBILITY TO INDEPENDENTLY CONFIRM ITS ACCURACY AND COMPLETENESS. ANY PROJECTIONS, OPINIONS, ASSUMPTIONS OR ESTIMATES USED ARE FOR EXAMPLE ONLY AND DO NOT REPRESENT THE CURRENT OR FUTURE PERFORMANCE OF THE PROPERTY. THE VALUE OF THIS TRANSACTION TO YOU DEPENDS ON TAX AND OTHER FACTORS WHICH SHOULD BE EVALUATED BY YOUR TAX, FINANCIAL AND LEGAL ADVISORS. YOU AND YOUR ADVISORS SHOULD CONDUCT A CAREFUL, INDEPENDENT INVESTIGATION OF THE PROPERTY TO DETERMINE TO YOUR SATISFACTION THE SUITABILITY OF THE PROPERTY FOR YOUR NEEDS.