



J.D. WINSTON

🏠 5820 Winwood Drive, Johnston, Iowa 50131

Offering Memorandum

Des Moines Recovery Center



J.D. WINSTON

Presented By:

Frank J. Braider III

J.D. Winston, LLC
601 Heritage Dr., Suite 150
Jupiter, FL 33458

O: 561.623.2355

C: 561.358.7687

E: FBraider@JDWinston.com

W: JDWinstonLLC.com



 5820 Winwood Drive, Johnston, Iowa 50131 

Offering Overview

🏠 JOHNSTON, IA

In 2022, Johnston, IA had a population of 23.9k people with a median age of 37 and a median household income of \$98,324. Between 2021 and 2022 the population of Johnston, IA grew from 23,418 to 23,856, a 1.87% increase and its median household income grew from \$93,363 to \$98,324, a 5.31% increase. The 5 largest ethnic groups in Johnston, IA are White (Non-Hispanic) (77.6%), Black or African American (Non-Hispanic) (10.4%), Asian (Non-Hispanic) (5.83%), Two+ (Non-Hispanic) (2.97%), and White (Hispanic) (2.01%). None of the households in Johnston, IA reported speaking a non-English language at home as their primary shared language. This does not consider the potential multi-lingual nature of households, but only the primary self-reported language spoken by all members of the household.

95.7% of the residents in Johnston, IA are U.S. citizens. The largest universities in Johnston, IA are La James International College-Johnston (48 degrees awarded in 2022). In 2022, the median property value in Johnston, IA was \$332,000, and the homeownership rate was 71.1%.

Most people in Johnston, IA drove alone to work, and the average commute time was 18.3 minutes. The average car ownership in Johnston, IA was 2 cars per household.



▼ FACILITY OVERVIEW

Property Name:

Des Moines Recovery Center

Address:

5820 Winwood Drive, Johnston, Iowa 50131

Building Size:

15,005 SF

Single-story building:

15,005 square feet

Lot Size:

1.503 acres (65,470 square feet)

Built in:

2000

Units:

12

Beds:

48

Located just west of Merle Hay Road, approximately one mile north of Interstate 80/35. Close to restaurants, retail, and services.

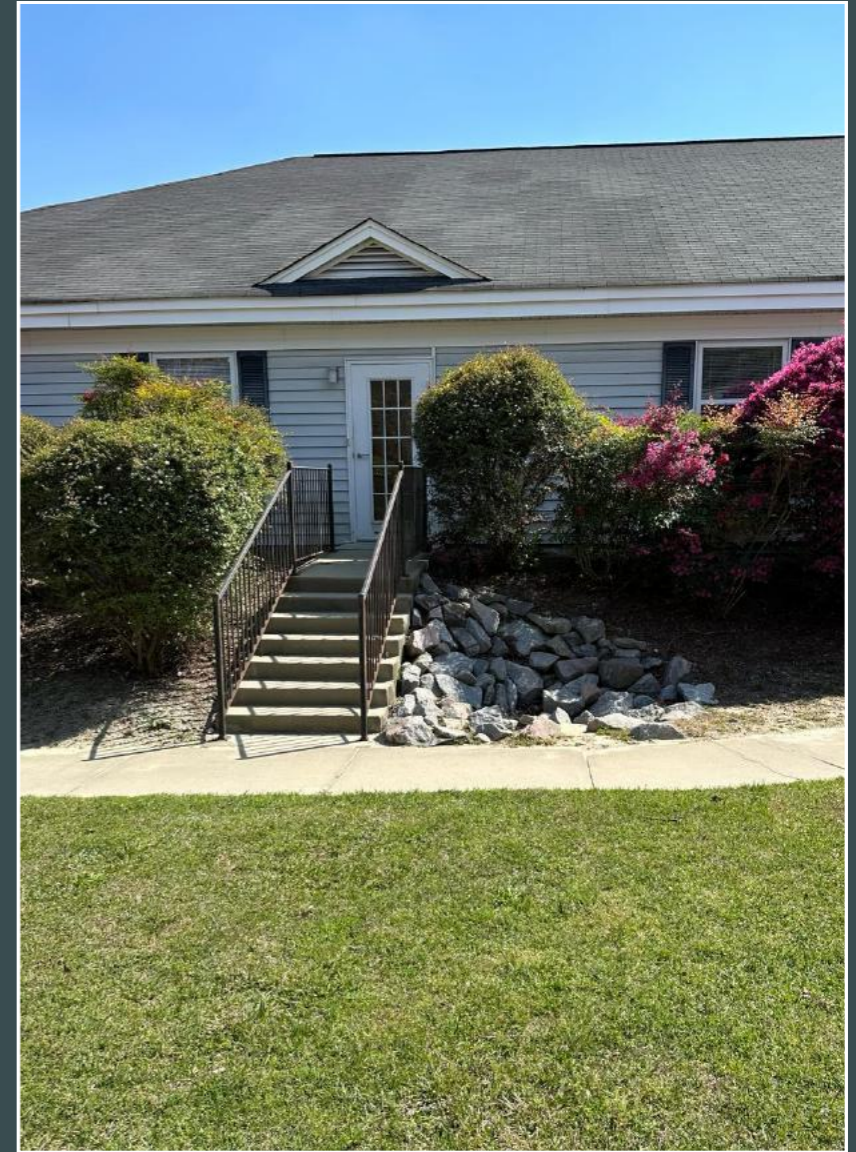


✓ FACILITY COMMON SPACES





✓ FACILITY COMMON SPACES

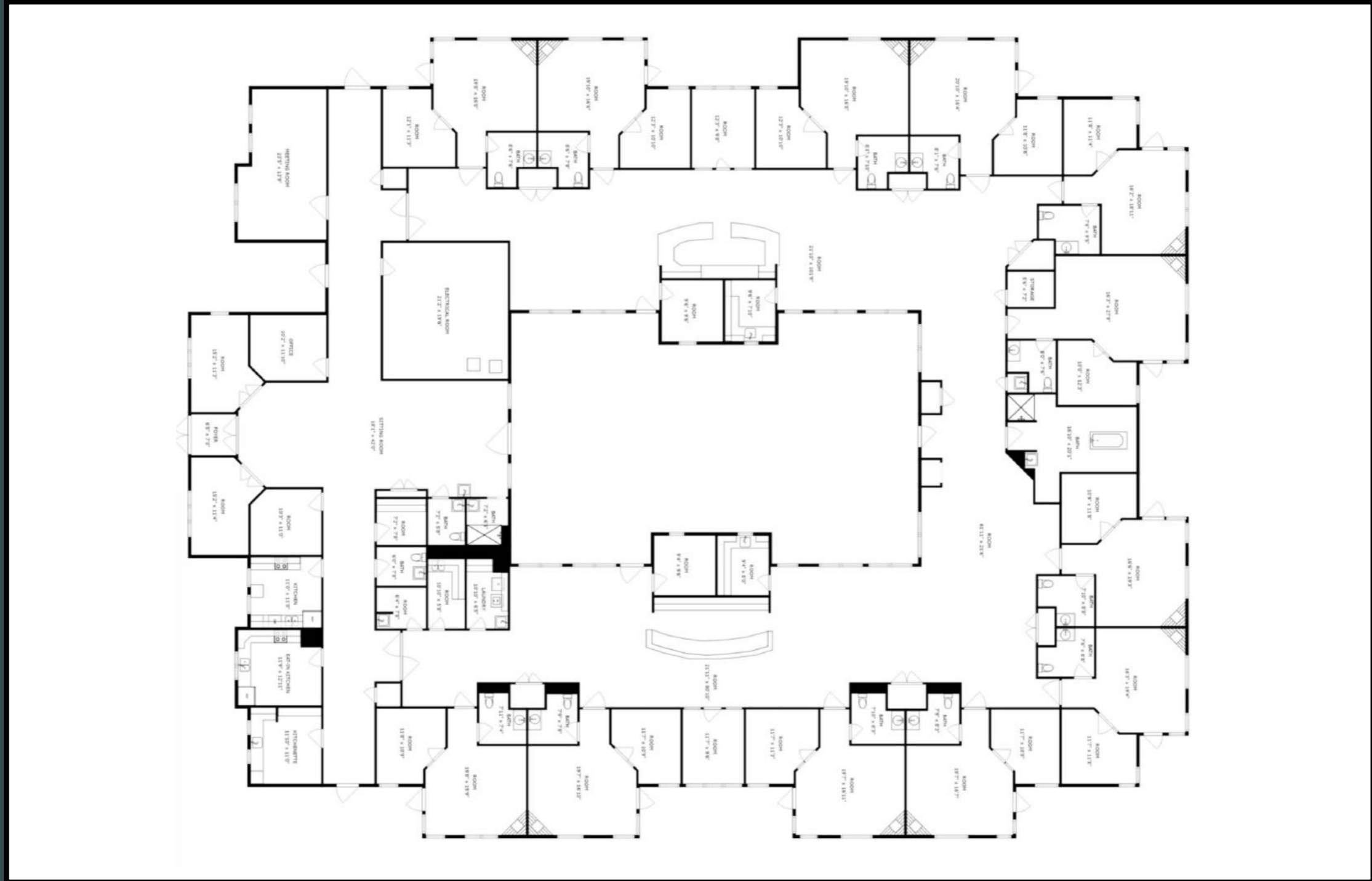


✓ FACILITY COMMON SPACES

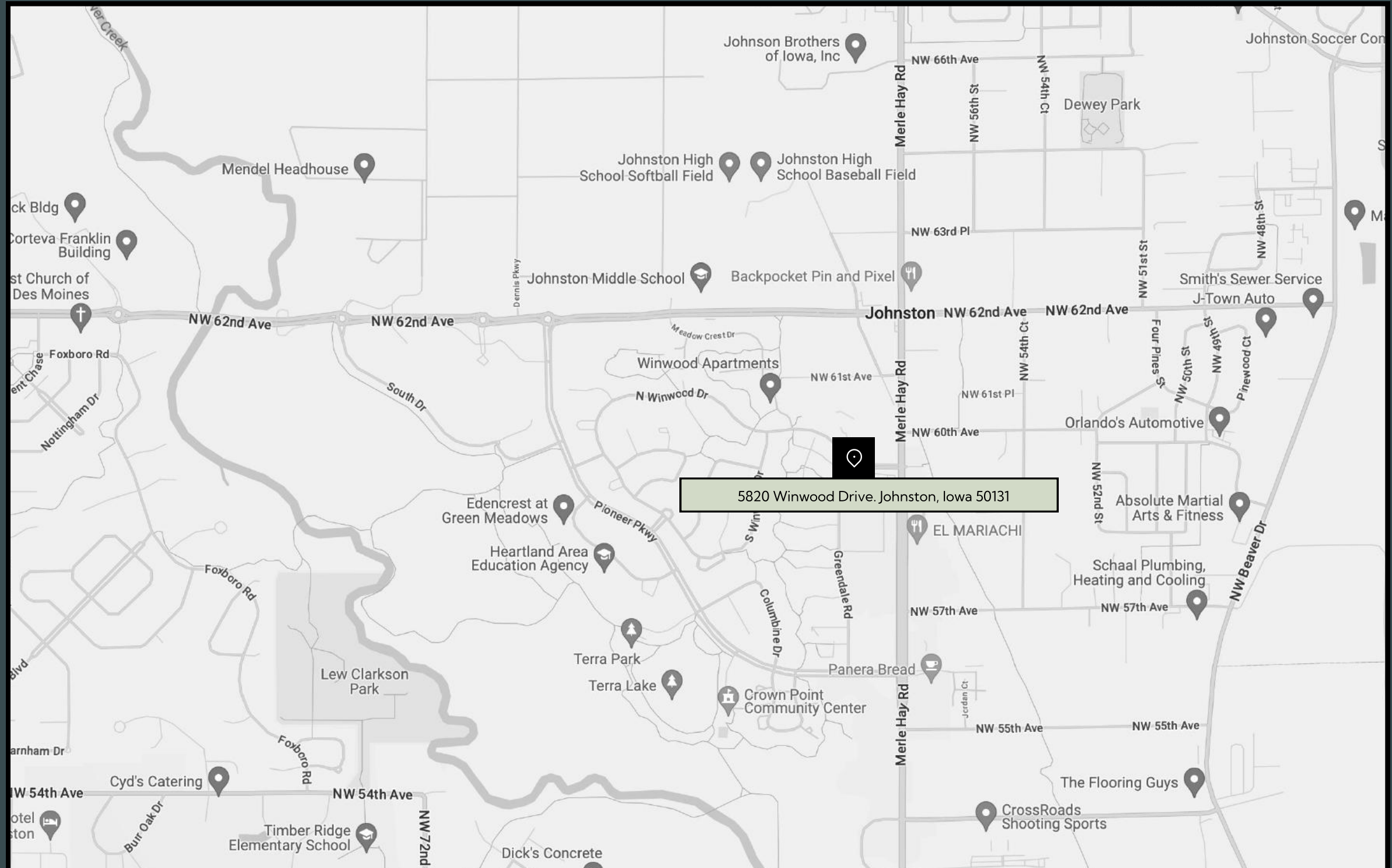




☑ FACILITY COMMON SPACES

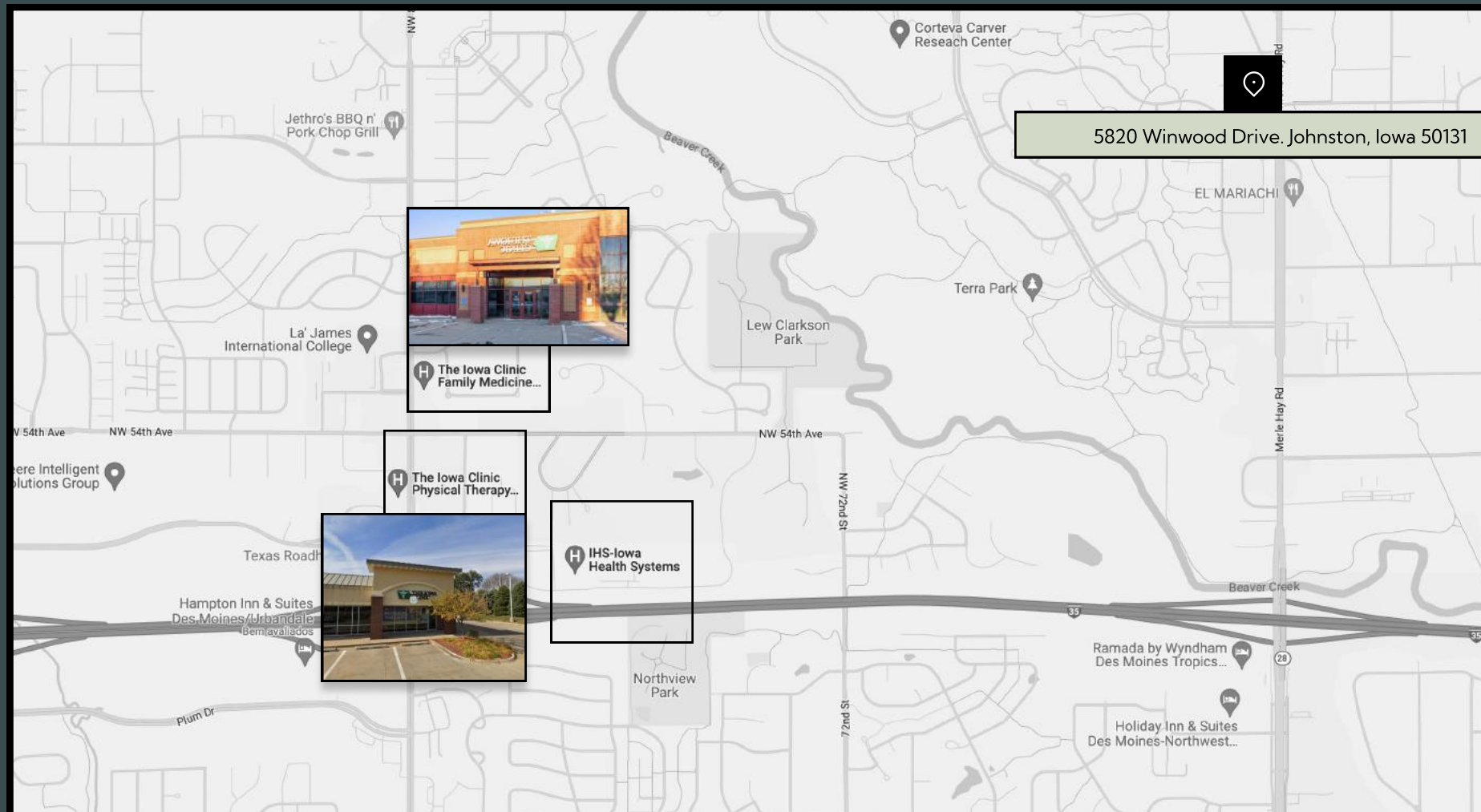


LOCA AREA OVERVIEW



LOCA AREA OVERVIEW

Located closed to many hospitals and clinics





J.D. WINSTON

Mr. Frank J. Braider III

J.D. Winston, LLC
601 Heritage Dr., Suite 150
Jupiter, FL 33458

O: 561.623.2355
C: 561.358.7687

E: FBraider@JDWinston.com
W: JDWinstonLLC.com