

PENN VERNON APARTMENTS

420 Smyrna Clayton
Blvd, Smyrna DE
19977

20 Townhouse
Style Apartments
2Bedroom/1Bath



R & R COMMERCIAL REALTY

46 SOUTH STATE STREET
DOVER, DE 19901

WWW.RANDRCOMMERCIALREALTY.COM

LARRY THOMPSON

(302) 674-3400 OFFICE
(302) 270-1186 CELL

LTHOMP3682@GMAIL.COM

CONTENTS

OVERVIEW	3
SITE PLAN	4
AERA MERCHANTS	5
STREET MAP	6
AERIAL MAP	7
COMMUNITY OVERVIEW	8
COMPANY PROFILE	9



R & R COMMERCIAL REALTY

46 SOUTH STATE STREET
DOVER, DE 19901

WWW.RANDRCOMMERCIALREALTY.COM

LARRY THOMPSON

(302) 674-3400 OFFICE
(302) 270-1186 CELL

LTHOMP3682@GMAIL.COM

OVERVIEW

18,000+/- SF of rental townhome apartments. Property consists of 2 buildings and 20 apartments total. Located in beautiful Smyrna, less than 2 miles from Route 1 and Route 13. Close to area banks, restaurants, and a short drive to town offices and public schools.

PROPERTY SUMMARY

- 2 Parcels
- 20 Units: 2 Bedroom/ 1 Bath
- Units are 900+/- SF
- All units include a washer & dryer
- Townhome style units with separate entrances
- Each Unit has separate address
- Utilities: Town of Smyrna Water, Sewer & Electric
- Chesapeake Utilities for Natural Gas

LOCATION HIGHLIGHTS

- Close Proximity to Banks and Restaurants
- Offers High Ranking Public School System
- Easy Access to Major Area Highways
- 12 miles North of State Capital



R & R COMMERCIAL REALTY

46 SOUTH STATE STREET
DOVER, DE 19901

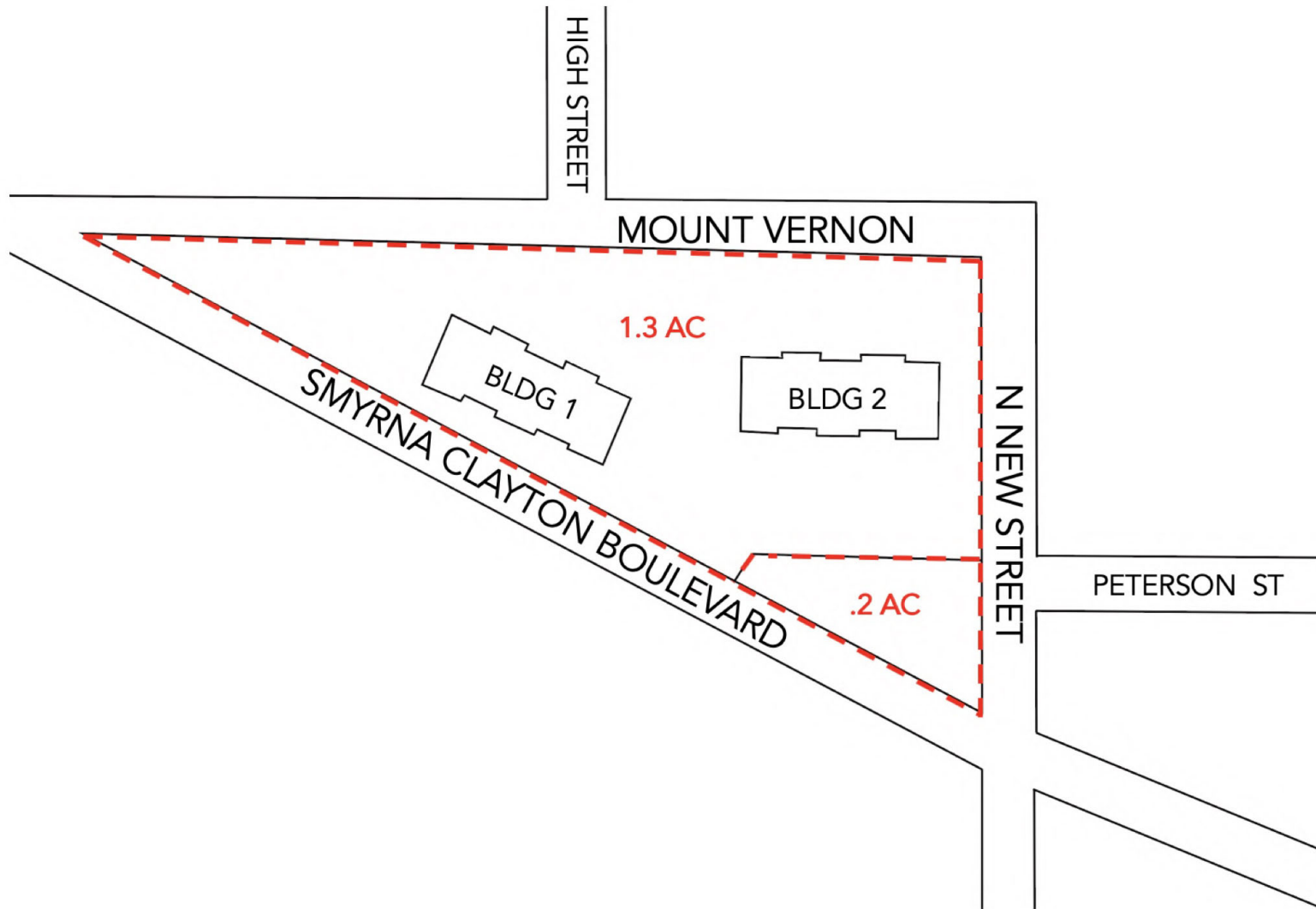
WWW.RANDRCOMMERCIALREALTY.COM

LARRY THOMPSON

(302) 674-3400 OFFICE

(302) 270-1186 CELL

LTHOMP3682@GMAIL.COM



R & R COMMERCIAL REALTY

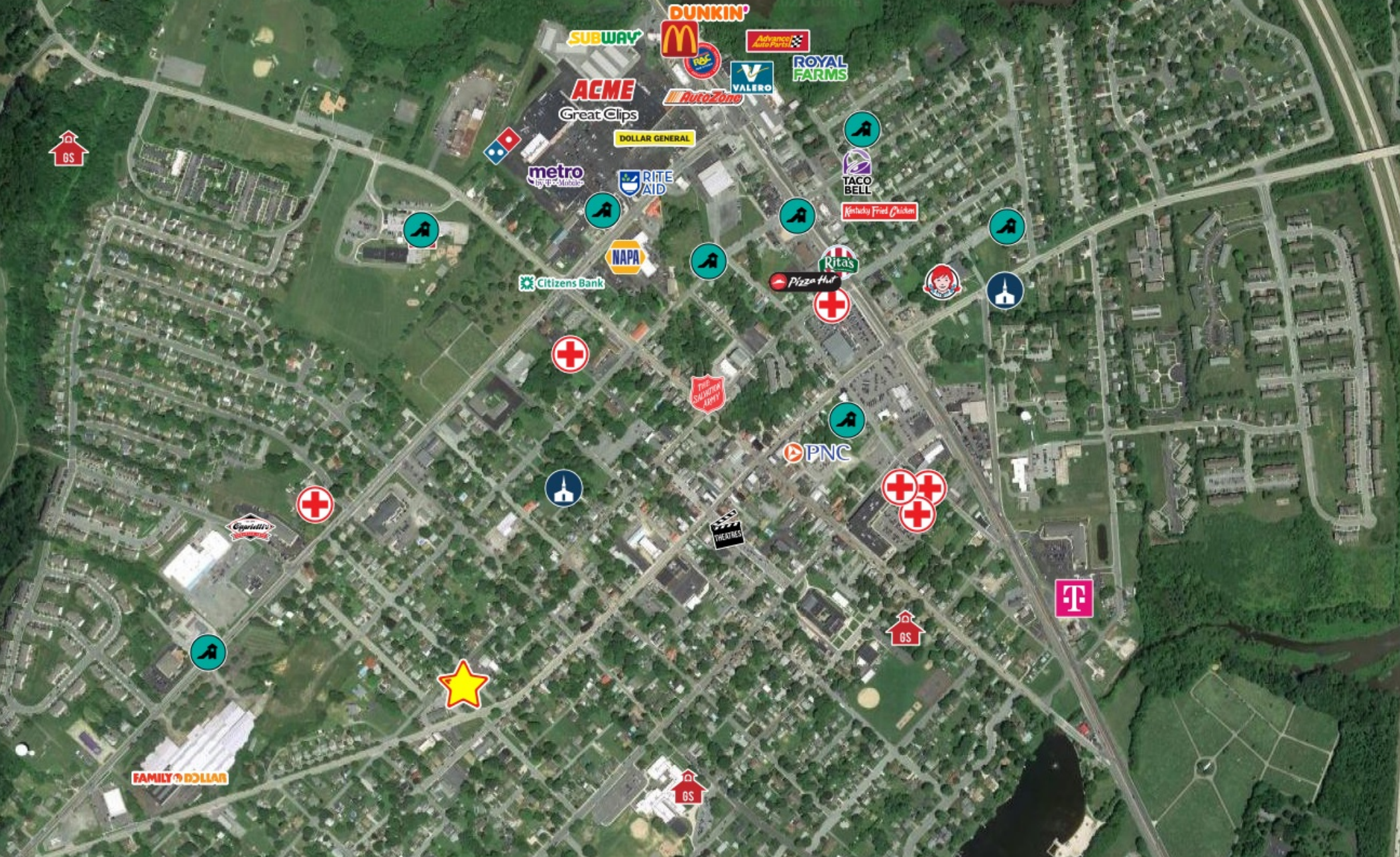
46 SOUTH STATE STREET
DOVER, DE 19901

WWW.RANDRCOMMERCIALREALTY.COM

LARRY THOMPSON

(302) 674-3400 OFFICE
(302) 270-1186 CELL

LTHOMP3682@GMAIL.COM



R & R COMMERCIAL REALTY

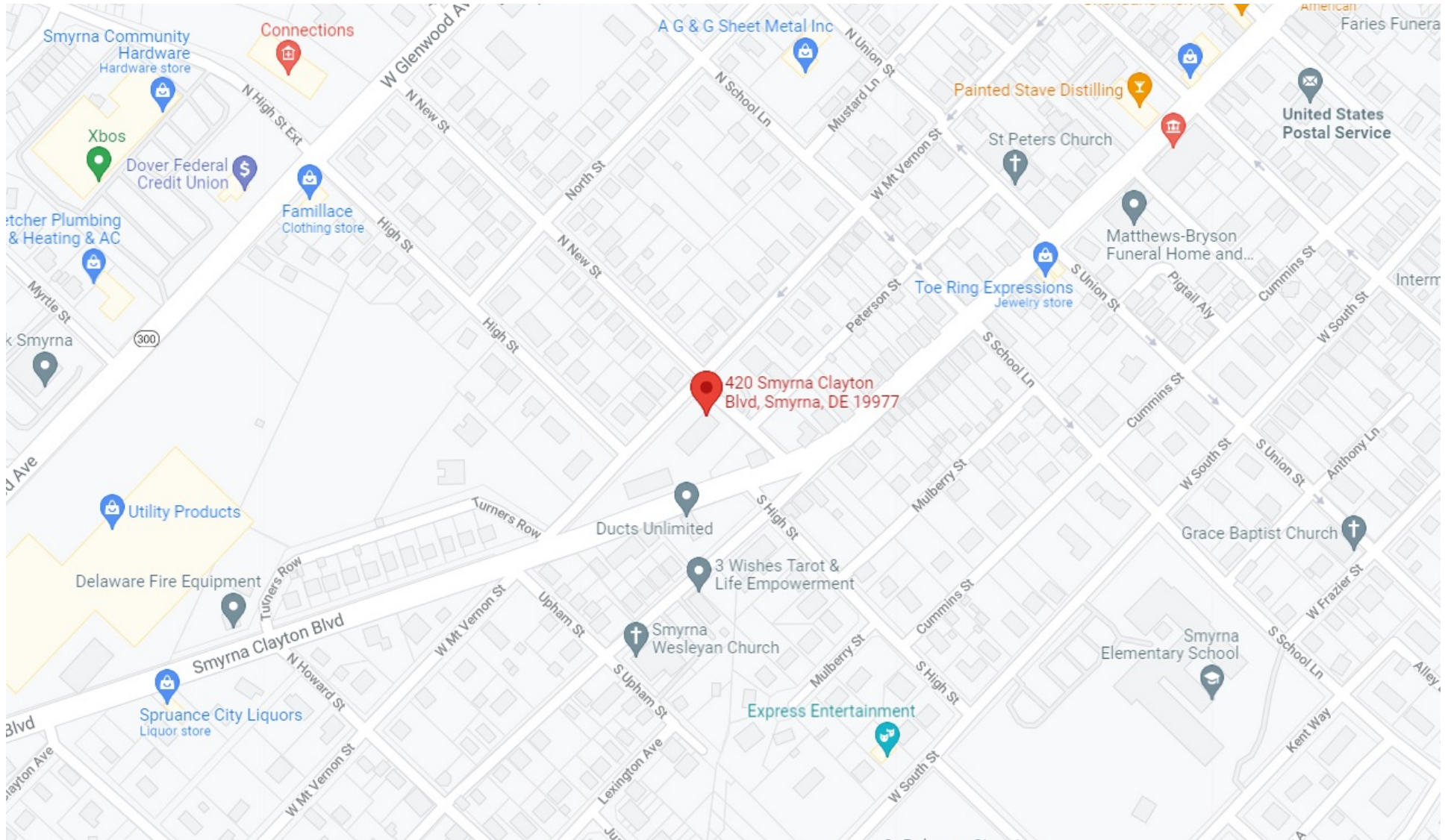
46 SOUTH STATE STREET
DOVER, DE 19901

WWW.RANDRCOMMERCIALREALTY.COM

LARRY THOMPSON

(302) 674-3400 OFFICE
(302) 270-1186 CELL

LTHOMP3682@GMAIL.COM



R & R COMMERCIAL REALTY

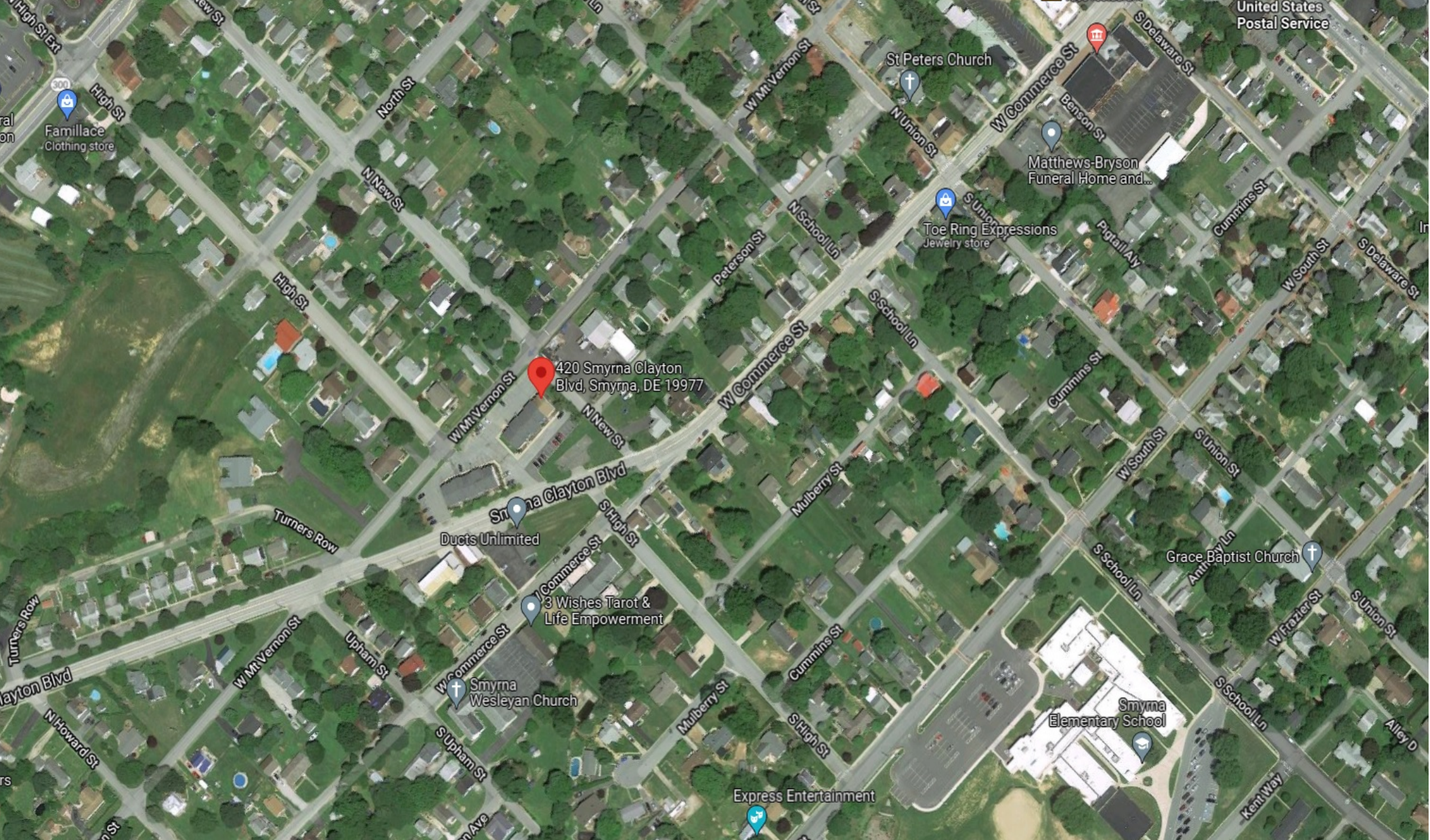
46 SOUTH STATE STREET
DOVER, DE 19901

WWW.RANDRCOMMERCIALREALTY.COM

LARRY THOMPSON

(302) 674-3400 OFFICE
(302) 270-1186 CELL

LTHOMP3682@GMAIL.COM



R & R COMMERCIAL REALTY

46 SOUTH STATE STREET
DOVER, DE 19901

WWW.RANDRCOMMERCIALREALTY.COM

LARRY THOMPSON

(302) 674-3400 OFFICE
(302) 270-1186 CELL

LTHOMP3682@GMAIL.COM

Delaware's 5th largest municipality, Smyrna is located in the demographic center of the State of Delaware. Currently occupied by over 11,000 residents, the town continues to rise economically and residential growth. The mix of town agencies, easily accessible healthcare facilities, established business presence and access to education make Smyrna an up and coming economic destination in the state with a well-trained, highly skilled workforce. Smyrna's highly desirable historic atmosphere and educational systems make it a charming location for families.



DEMOGRAPHICS	1 MILE	3 MILES	5 MILES
POPULATION	8,490	26,483	32,951
MEDIAN HH INCOME	\$ 63,134	\$ 67,170	\$ 67,999
MEDIAN AGE	36.8	39.1	39.4
HOUSEHOLDS	3,073	8,627	10,991



R & R COMMERCIAL REALTY

46 SOUTH STATE STREET
DOVER, DE 19901

WWW.RANDRCOMMERCIALREALTY.COM

LARRY THOMPSON

(302) 674-3400 OFFICE
(302) 270-1186 CELL

LTHOMP3682@GMAIL.COM

R & R COMMERCIAL REALTY

With more than 80 years of combined professional experience, R&R is one of the most visible and respected real estate firms in Delaware, and throughout the Delmarva region. Our in-depth knowledge of the local markets, along with our extensive national and regional contacts, provide our clients with the broadest exposure and best service available. Specializing in leasing and sales of all types of retail, office, and industrial spaces, our team is here to help with all of your commercial real estate and property management needs.

LARRY THOMPSON - REALTOR

lthomp3682@gmail.com
(302) 674-3400 Office
(302) 270-1186 Cell

Licensed as a realtor in Delaware since 2006, specializing in commercial real estate, Larry Thompson is one of Delmarva's preeminent real estate agents. With extensive knowledge in office, land, and retail sales, as well as tenant representation, Larry excels in helping his clients with ease.



R & R COMMERCIAL REALTY

46 SOUTH STATE STREET
DOVER, DE 19901

WWW.RANDRCOMMERCIALREALTY.COM

LARRY THOMPSON

(302) 674-3400 OFFICE
(302) 270-1186 CELL

LTHOMP3682@GMAIL.COM



PENN VERNON APARTMENTS



R & R COMMERCIAL REALTY

46 SOUTH STATE STREET
DOVER, DE 19901

WWW.RANDRCOMMERCIALREALTY.COM

LARRY THOMPSON

(302) 674-3400 OFFICE
(302) 270-1186 CELL
LTHOMP3682@GMAIL.COM