

MEDICAL OFFICE SPACE AVAILABLE

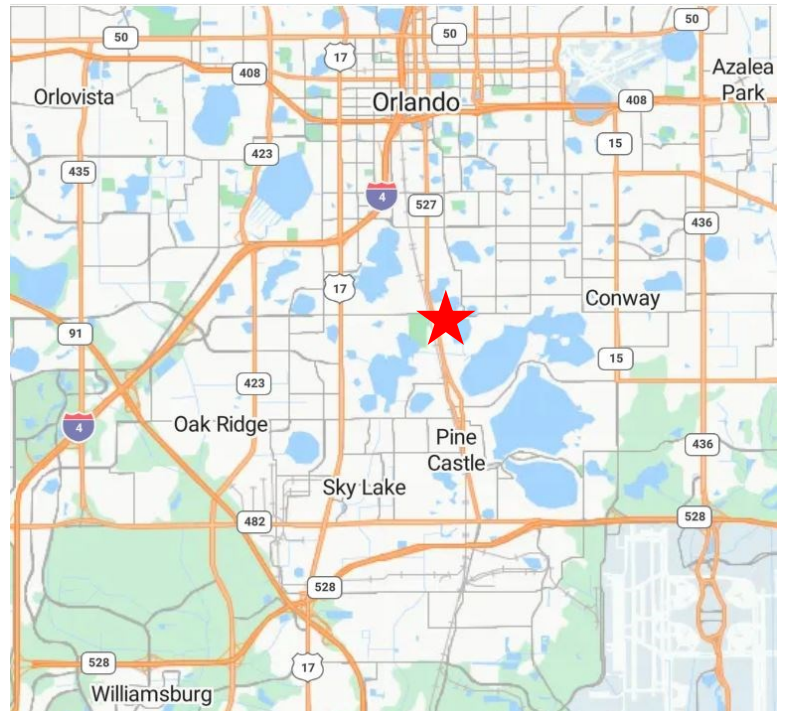
402 Gatlin Ave, Orlando FL 32806



PROPERTY HIGHLIGHTS

- Class A- 2,176 SF Medical Office in Orlando's SODO market
- **Will discuss options to lease or purchase**
- 12 Parking Spaces (5.5 per 1,000 SF)
- High incomes in the immediate area
- Walkable to local restaurants, and retail
- Monument signage Available
- Fronts Gatlin Ave (10,500 VPD) Just east of signalized Orange Ave intersection (40,500 VPD)

Demographics	1-Mile	3-Mile	5-Mile
Population	7,718	113,780	285,961
Average HH Income	\$119,010	\$79,978	\$75,642



Drew Shofner
321-295-3998
Drew@blurockcommercial.com

3408 S. Orange Ave.
Suite B
Orlando, FL 32806
www.blurockcommercial.com

MEDICAL OFFICE SPACE AVAILABLE

402 Gatlin Ave, Orlando FL 32806



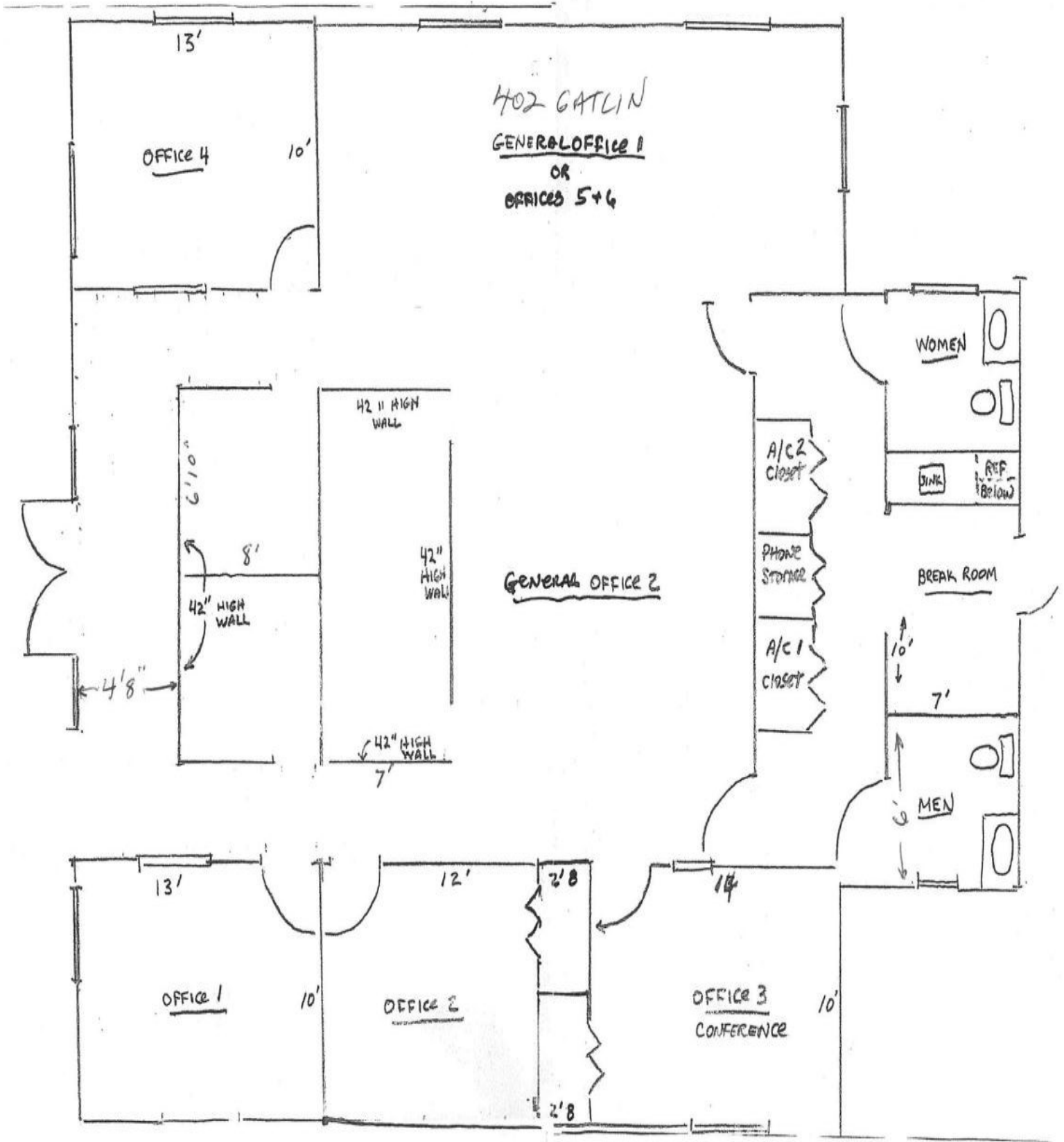
Drew Shofner
321-295-3998
Drew@blurockcommercial.com

3408 S. Orange Ave.
Suite B
Orlando, FL 32806
www.blurockcommercial.com



MEDICAL OFFICE SPACE AVAILABLE

402 Gatlin Ave, Orlando FL 32806

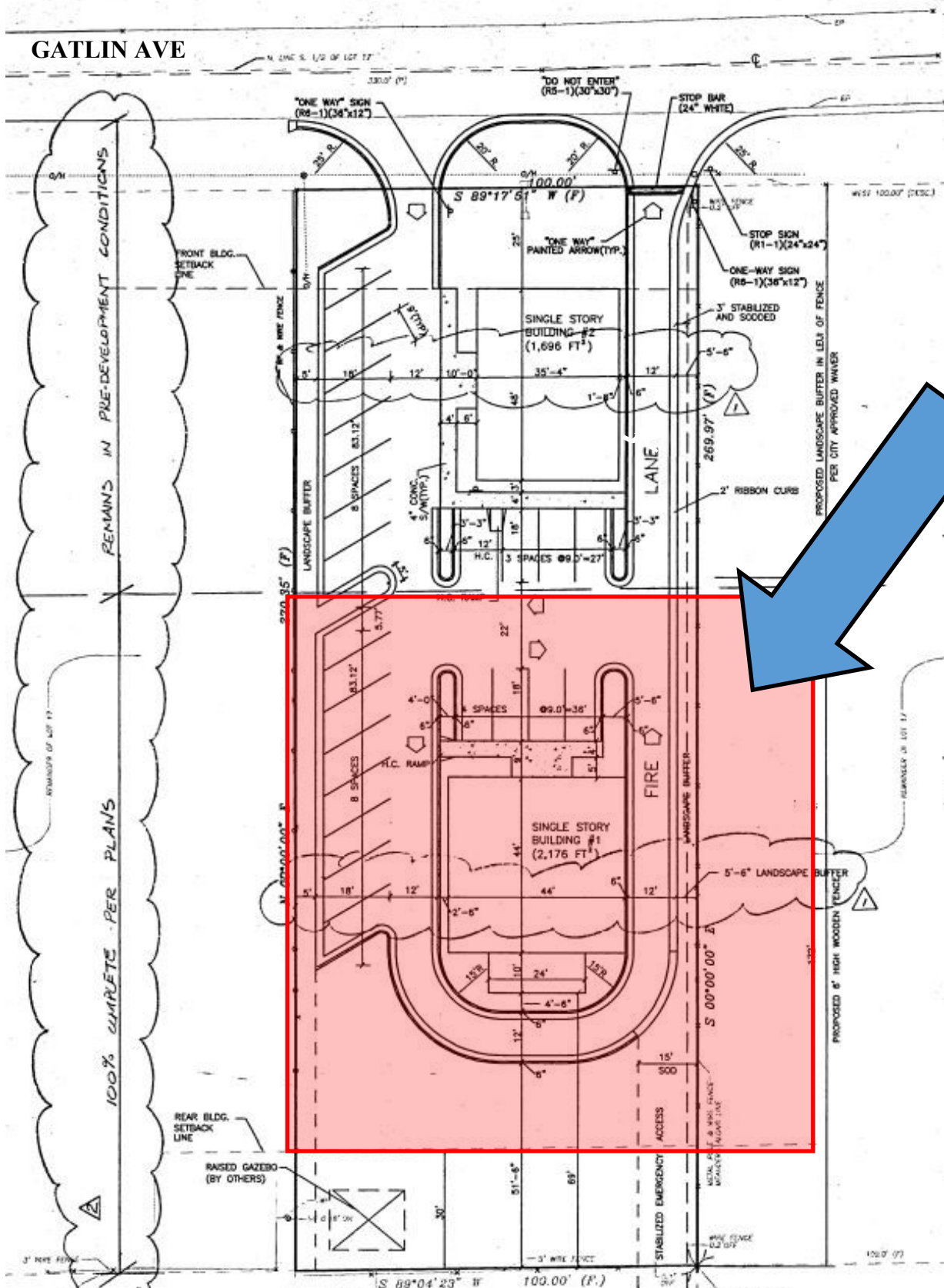


Drew Shofner
321-295-3998
Drew@blurockcommercial.com

3408 S. Orange Ave.
Suite B
Orlando, FL 32806
www.blurockcommercial.com

MEDICAL OFFICE SPACE AVAILABLE

402 Gatlin Ave, Orlando FL 32806



Drew Shofner

321-295-3998

Drew@blurockcommercial.com

3408 S. Orange Ave.

Suite B

Orlando, FL 32806

www.blurockcommercial.com

