

107 E. MILWAUKEE AVENUE
DETROIT, MICHIGAN

RETAIL FOR SALE

10,440 Square Feet Available



**SIGNATURE
ASSOCIATES**
KNOW SIGNATURE | KNOW RESULTS



PROPERTY FEATURES

- 10,440 square feet available
 - 8,500 square foot first floor (Firewater Bar & Grill)
 - 1,940 square foot second floor (Apartments)
- 28' clear height
- Partial basement
- Available immediately
- Easy access to I-75 and I-94
- Sale Price: \$1,250,000 (\$109.17/sq. ft.)



For more information, please contact:

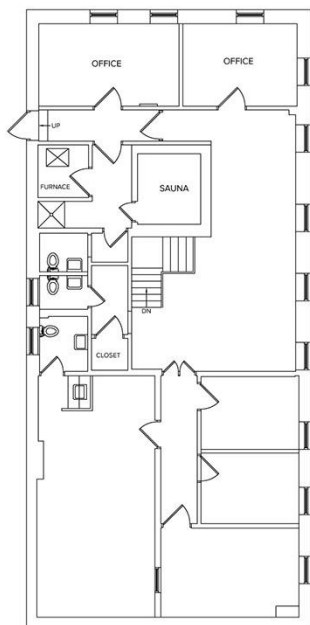
CHRIS MONSOUR
(248) 948 0107
cmonsour@signatureassociates.com

STEVE GORDON
(248) 948 0101
sgordon@signatureassociates.com

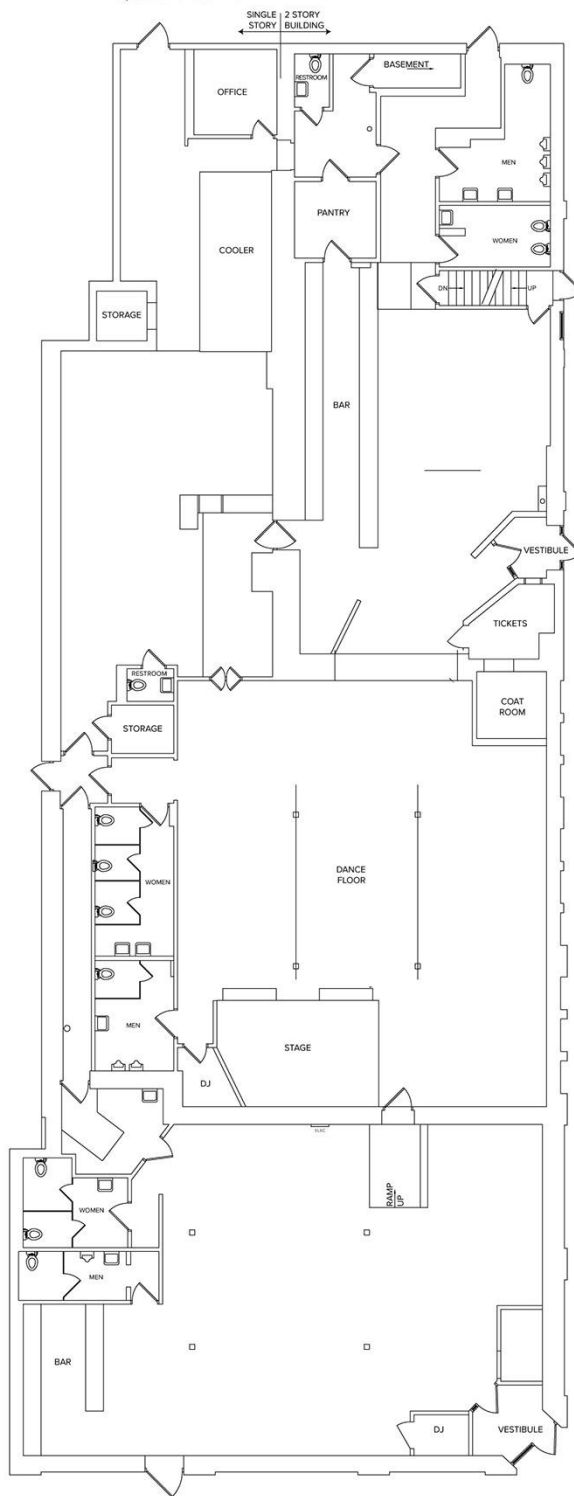
SIGNATURE ASSOCIATES
One Towne Square, Suite 1200
Southfield, MI 48076
www.signatureassociates.com

Site Plan

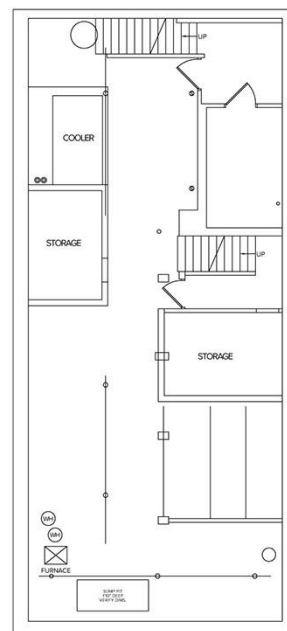
SECOND FLOOR
1,940 SQ.FT.



FIRST FLOOR
8,500 SQ.FT.



BASEMENT



For more information, please contact:

CHRIS MONSOUR
(248) 948 0107
cmonsour@signatureassociates.com

STEVE GORDON
(248) 948 0101
sgordon@signatureassociates.com

SIGNATURE ASSOCIATES
One Towne Square, Suite 1200
Southfield, MI 48076
www.signatureassociates.com

107 E. Milwaukee Avenue – Detroit, Michigan

Retail For Sale

10,440
Square Feet
AVAILABLE

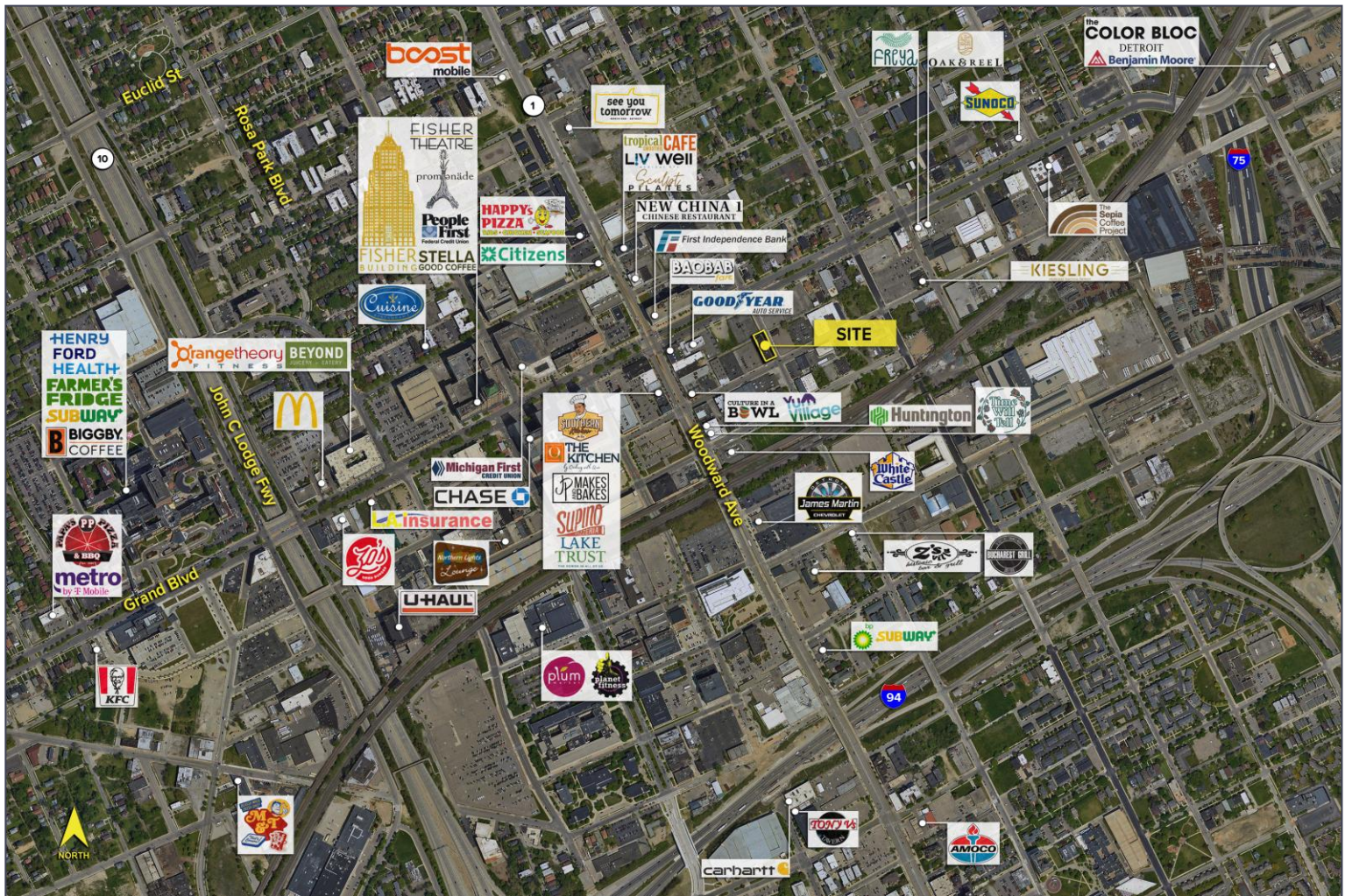


DEMOGRAPHICS

	POPULATION	MED. HH INCOME
1 MILE	16,464	\$41,705
3 MILE	140,384	\$42,977
5 MILE	324,990	\$42,301

TRAFFIC COUNTS (TWO-WAY)

28,855	Woodward Ave. S of Grand Blvd.
24,453	Woodward Ave. N of Grand Blvd.
17,140	Grand Blvd. E of Woodward Ave.
17,035	Grand Blvd. W of Woodward Ave.



For more information, please contact:

CHRIS MONSOUR
(248) 948 0107
cmonsour@signatureassociates.com

STEVE GORDON
(248) 948 0101
sgordon@signatureassociates.com

SIGNATURE ASSOCIATES
One Towne Square, Suite 1200
Southfield, MI 48076
www.signatureassociates.com