

# FOR LEASE

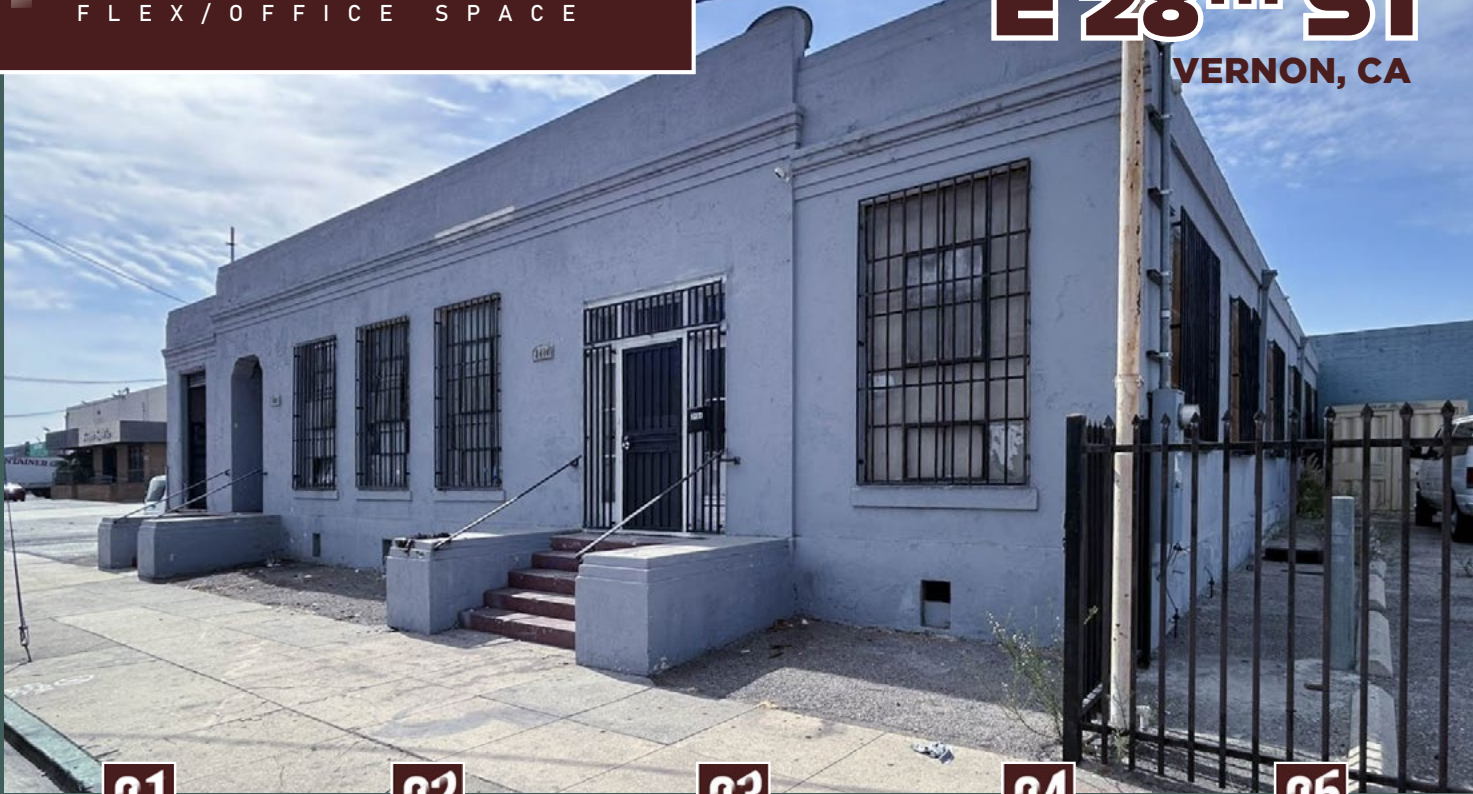
FLEX / OFFICE SPACE

# 2404 E 28<sup>TH</sup> ST

VERNON, CA

## SPECIFICATIONS

ZONING **VEM** CLEAR HEIGHT **12'** YEAR BUILT **1990** PARKING **2 SPACES** AVAILABLE **±3,900 SF**



**01**

Refurbished Office on Santa Fe Ave

**02**

Immediate Access to Freeways and Arts District Amenities

**03**

High Visibility/Signalized Corner in Prime North Vernon Location

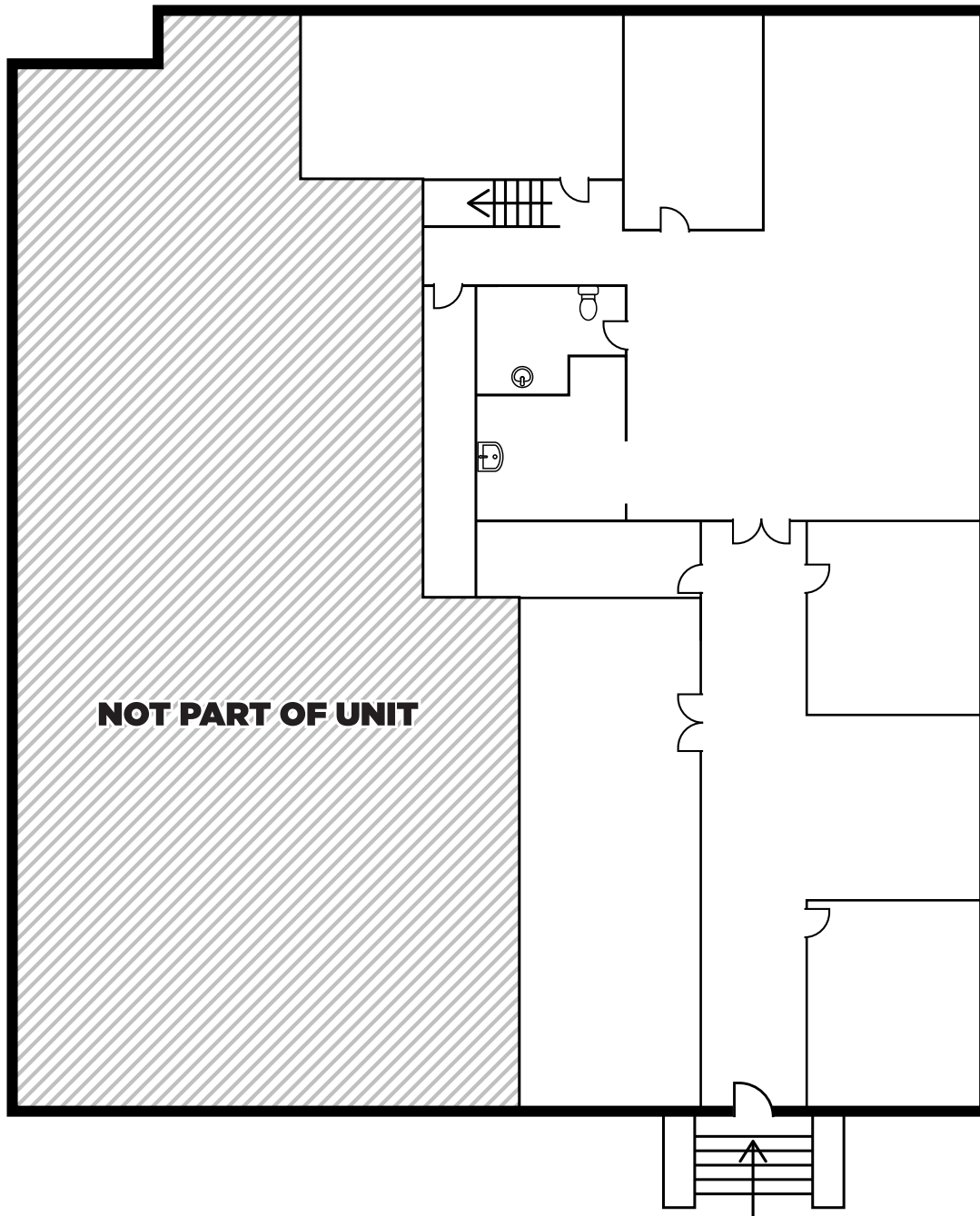
**04**

Connectivity to DTLA, Commerce via 26th Street

**05**

Ideal for Office, Showroom, Light Manufacturing, and more





**BRANDON GILL**  
 Executive Director  
 +1 213 629 6528  
 brandon.gill@cushwake.com  
 Lic #01262330

**BRANDON BURNS**  
 Executive Director  
 +1 213 629 6541  
 brandon.burns@cushwake.com  
 Lic #01194796

**JAE YOO**  
 Executive Director  
 +1 213 629 6551  
 jae.yoo@cushwake.com  
 Lic #01503567

**CHARLEY KOONES**  
 Senior Associate  
 +1 213 330 0980  
 charley.koones@cushwake.com  
 Lic #02076100

