

FOR SALE



CENTRE 205

2600 SE 98TH AVE | PORTLAND, OR 97266

For more information or a property tour, please contact:

TIM PFEIFFER

503.225.8455

TimP@norris-stevens.com

RAYMOND DUCHEK

503.225.8492

RaymondD@norris-stevens.com

Information contained herein has been obtained from others and considered to be reliable; however, a prospective purchaser or lessee is expected to verify all information to his/her own satisfaction.

06/11/2025

Norris & Stevens

INVESTMENT REAL ESTATE SERVICES



900 SW 5TH AVE, 17TH FLOOR | PORTLAND, OR 97204
503.223.3171 • NORRIS-STEVENS.COM

CENTRE 205

2600 SE 98th Ave | Portland, OR 97266

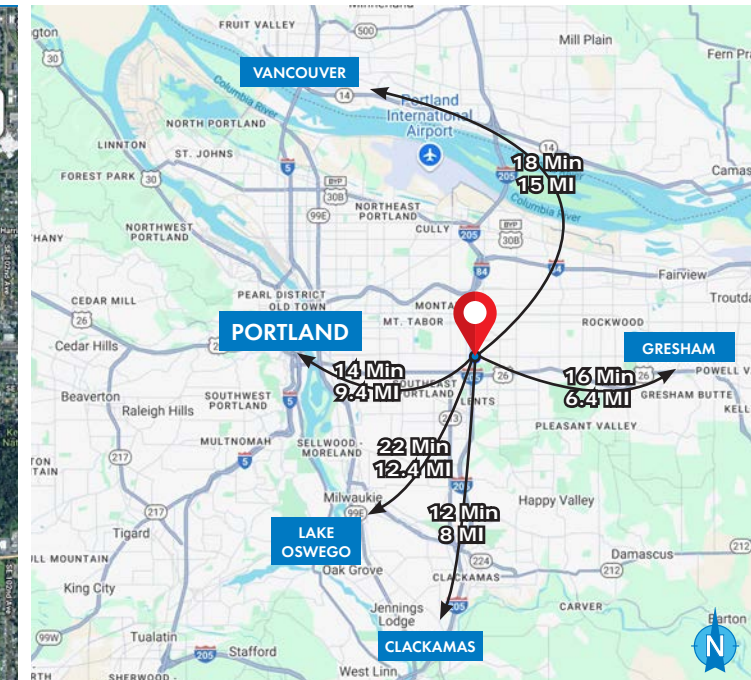
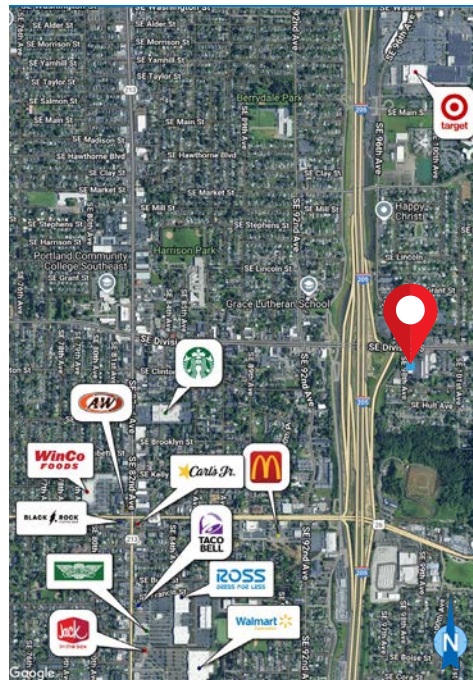
OFFICE BUILDING FOR SALE

DETAILS

- Sale price: Call for pricing
- Building size: $\pm 30,000$ SF
- Land size: ± 1.94 AC (80,150 SF)
- Year built: 1990
- Zoning: CO2 – Office Commercial 2
- Parking ratio: 5.4/1,000 SF
- Great owner/user opportunity
- Full second floor available with 360 degree views
- Can accommodate sizes from $\pm 2,924$ - 15,509 SF
- Ground floor leased – income in place

FEATURES

- Freshly paved and striped parking lot; Upgrades include LED lights throughout the exterior building and parking lot as well as all interior common areas
- Upgraded and remodeled Class A finishes in lobby and restroom
- Great freeway access – located directly off I-205 and SE Division St
- Inviting two-story glass atrium entrance
- Elevator served
- Floor plans featuring offices, classrooms, bullpen, and break rooms
- Abundant on-site parking
- Exterior signage potential with I-205 visibility with great traffic count
- 14 minutes from downtown Portland, 16 minutes from Vancouver, 12 minutes from Portland International Airport, and 10 minutes from Clackamas Town Center
- Minutes from numerous coffee, shopping, restaurant, fitness, grocery, hiking and mass transit options



For more information or a property tour, please contact:

TIM PFEIFFER

503.225.8455

TimP@norris-stevens.com

RAYMOND DUCHEK

503.225.8492

RaymondD@norris-stevens.com

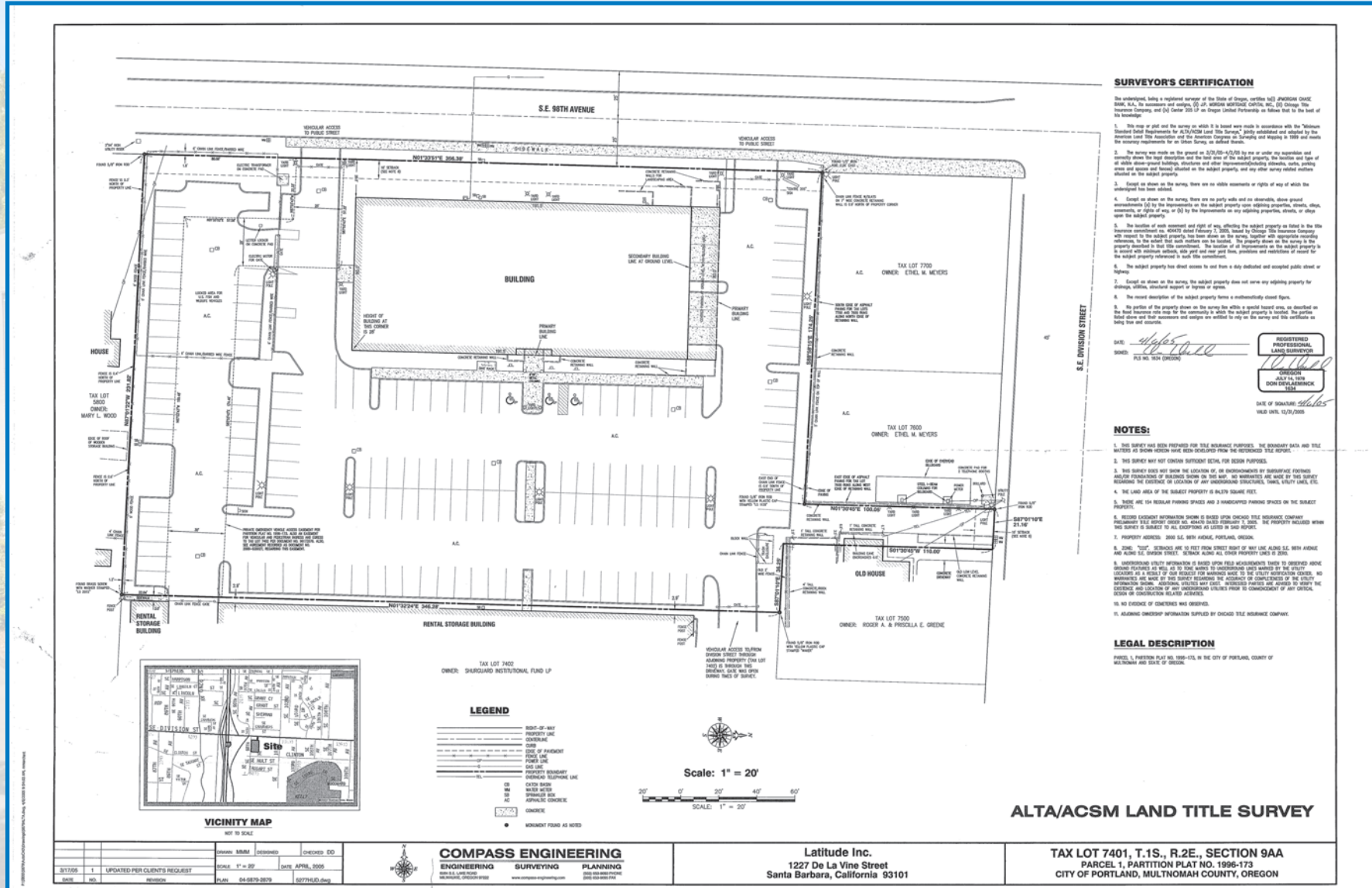
Information contained herein has been obtained from others and considered to be reliable; however, a prospective purchaser or lessee is expected to verify all information to his/her own satisfaction.

Norris & Stevens

INVESTMENT REAL ESTATE SERVICES



900 SW 5TH AVE, 17TH FLOOR | PORTLAND, OR 97204
503.223.3171 • NORRIS-STEVENS.COM



For more information or a property tour, please contact:

TIM PFEIFFER

503.225.8455

TimP@norris-stevens.com

RAYMOND DUCHEK

503.225.8492

RaymondD@norris-stevens.com

Information contained herein has been obtained from others and considered to be reliable; however, a prospective purchaser or lessee is expected to verify all information to his/her own satisfaction.

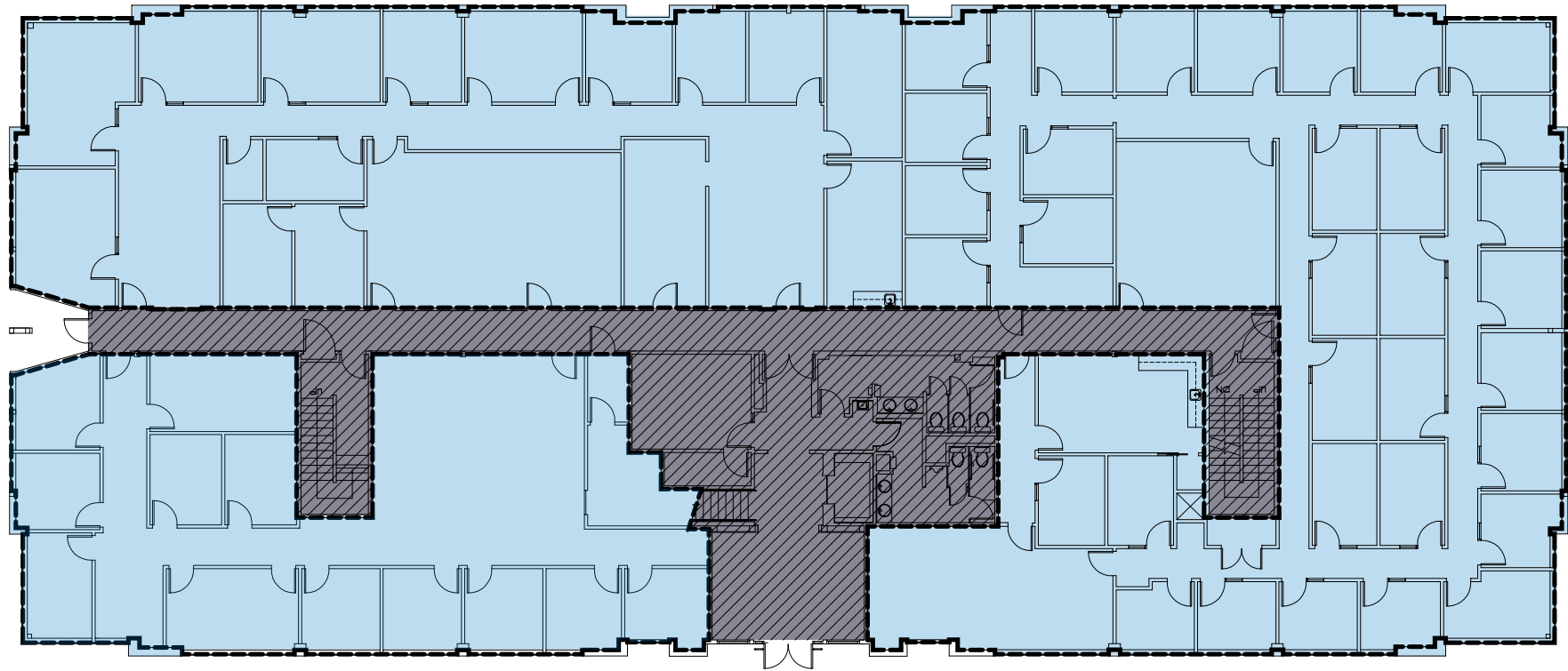
Norris & Stevens

INVESTMENT REAL ESTATE SERVICES



900 SW 5TH AVE, 17TH FLOOR | PORTLAND, OR 97204
503.223.3171 • NORRIS-STEVENS.COM

GROUND FLOOR



For more information or a property tour, please contact:

TIM PFEIFFER

503.225.8455

TimP@norris-stevens.com

RAYMOND DUCHEK

503.225.8492

RaymondD@norris-stevens.com

Information contained herein has been obtained from others and considered to be reliable; however, a prospective purchaser or lessee is expected to verify all information to his/her own satisfaction.

Norris & Stevens

INVESTMENT REAL ESTATE SERVICES



900 SW 5TH AVE, 17TH FLOOR | PORTLAND, OR 97204
503.223.3171 • NORRIS-STEVENS.COM

SECOND FLOOR – POTENTIAL TENANT LAYOUT



For more information or a property tour, please contact:

TIM PFEIFFER

503.225.8455

TimP@norris-stevens.com

RAYMOND DUCHEK

503.225.8492

RaymondD@norris-stevens.com

Information contained herein has been obtained from others and considered to be reliable; however, a prospective purchaser or lessee is expected to verify all information to his/her own satisfaction.

Norris & Stevens

INVESTMENT REAL ESTATE SERVICES



900 SW 5TH AVE, 17TH FLOOR | PORTLAND, OR 97204

503.223.3171 • NORRIS-STEVENS.COM

PROPERTY PHOTOS



CENTRE 205

2600 SE 98th Ave | Portland, OR 97266



For more information or a property tour, please contact:

TIM PFEIFFER

503.225.8455

TimP@norris-stevens.com

RAYMOND DUCHEK

503.225.8492

RaymondD@norris-stevens.com

Information contained herein has been obtained from others and considered to be reliable; however, a prospective purchaser or lessee is expected to verify all information to his/her own satisfaction.

Norris & Stevens

INVESTMENT REAL ESTATE SERVICES



AMO

900 SW 5TH AVE, 17TH FLOOR | PORTLAND, OR 97204
503.223.3171 • NORRIS-STEVENS.COM

PROPERTY PHOTOS



CENTRE 205

2600 SE 98th Ave | Portland, OR 97266

For more information or a property tour, please contact:

TIM PFEIFFER

503.225.8455

TimP@norris-stevens.com

RAYMOND DUCHEK

503.225.8492

RaymondD@norris-stevens.com

Information contained herein has been obtained from others and considered to be reliable; however, a prospective purchaser or lessee is expected to verify all information to his/her own satisfaction.

Norris & Stevens

INVESTMENT REAL ESTATE SERVICES

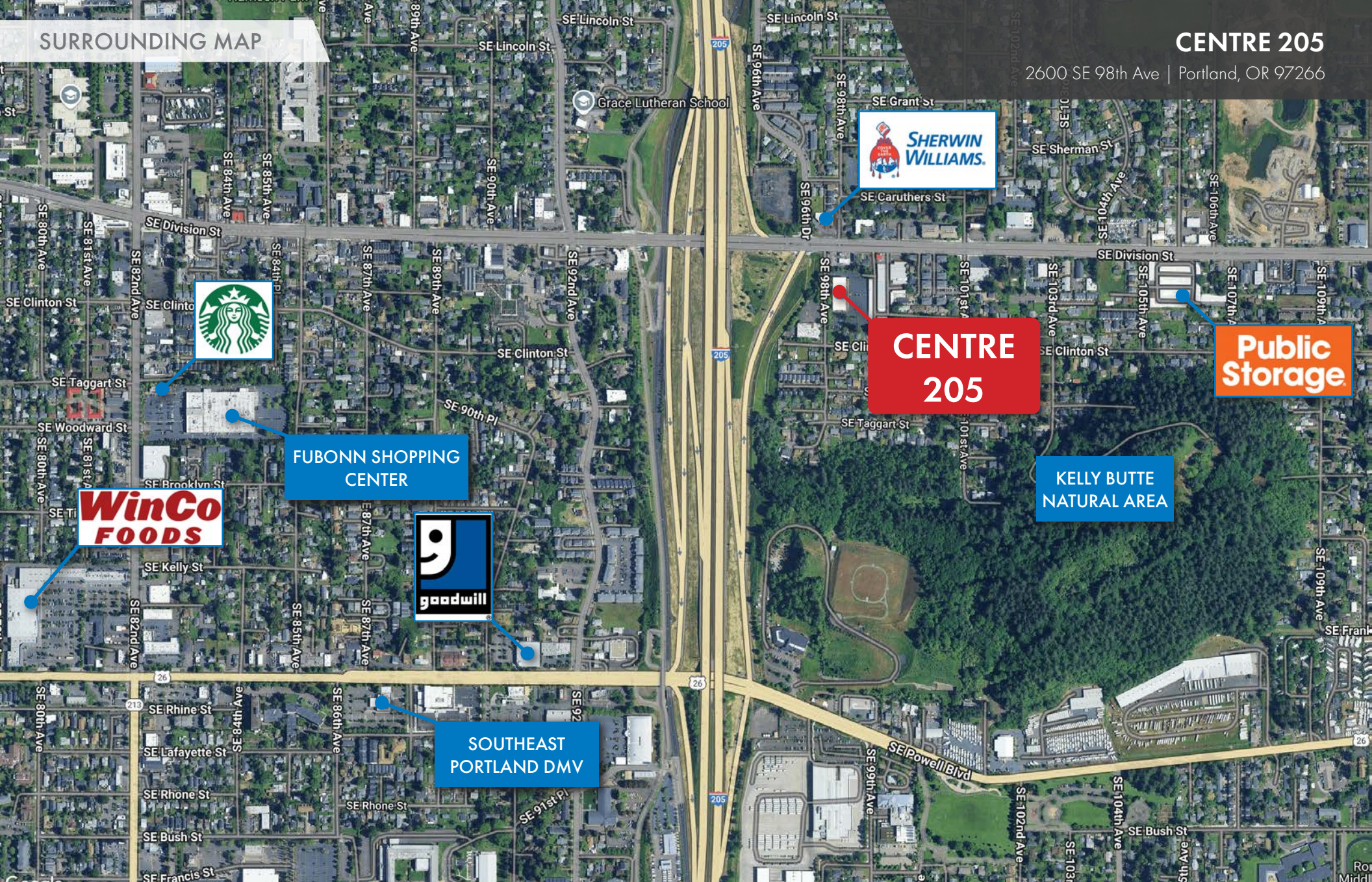


900 SW 5TH AVE, 17TH FLOOR | PORTLAND, OR 97204
503.223.3171 • NORRIS-STEVENS.COM

SURROUNDING MAP

CENTRE 205

2600 SE 98th Ave | Portland, OR 97266



For more information or a property tour, please contact:

TIM PFEIFFER

503.225.8455

TimP@norris-stevens.com

RAYMOND DUCHEK

503.225.8492

RaymondD@norris-stevens.com

Information contained herein has been obtained from others and considered to be reliable; however, a prospective purchaser or lessee is expected to verify all information to his/her own satisfaction.

Norris & Stevens

INVESTMENT REAL ESTATE SERVICES



900 SW 5TH AVE, 17TH FLOOR | PORTLAND, OR 97204

503.223.3171 • NORRIS-STEVENS.COM