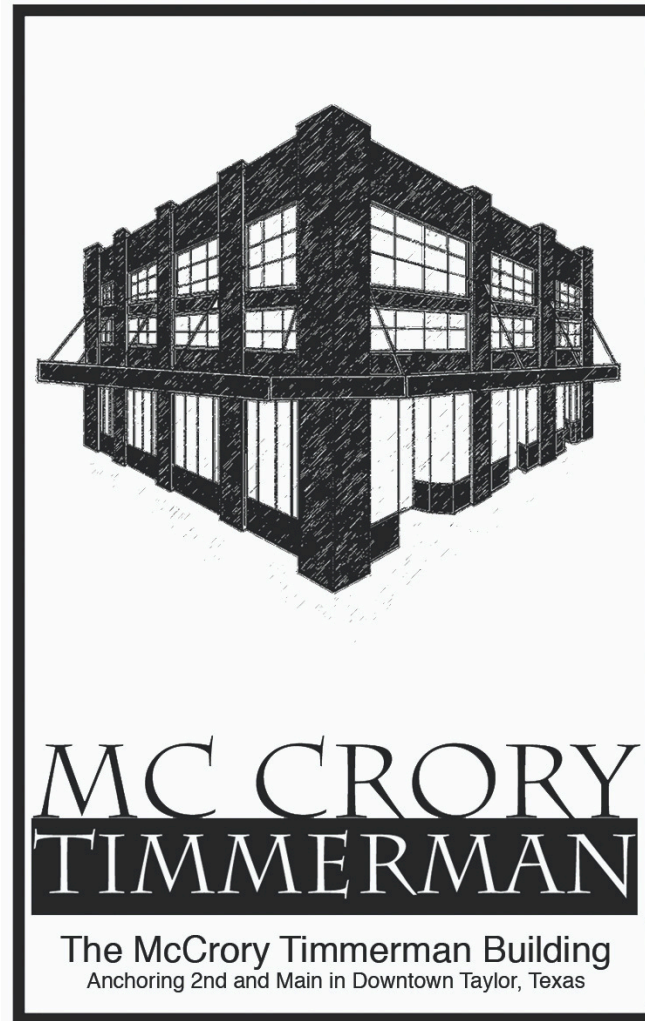




Loft C



MC CRORY TIMMERMAN

The McCrory Timmerman Building
Anchoring 2nd and Main in Downtown Taylor, Texas



2nd St. Station



La Scala



Good Strangers Coffee



Suite G

FOR LEASING INFORMATION:



JULIE DOWNS

512.497.3967

JULIEDOWNS4@GMAIL.COM

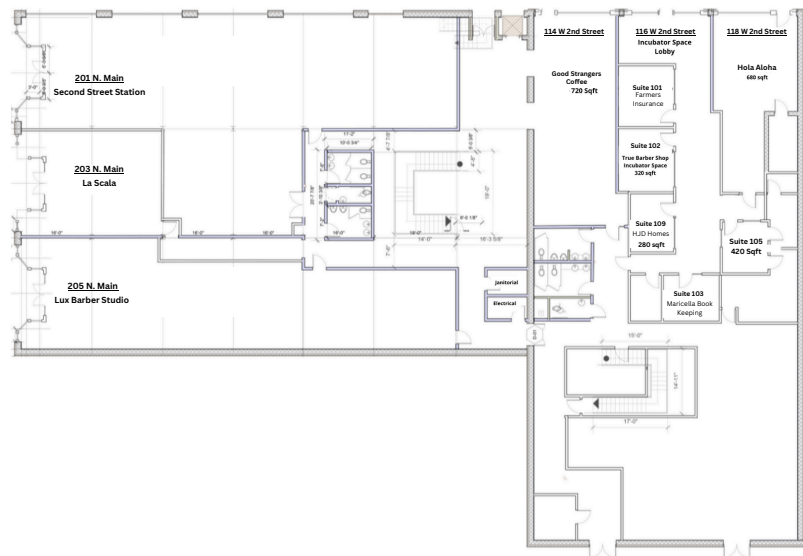
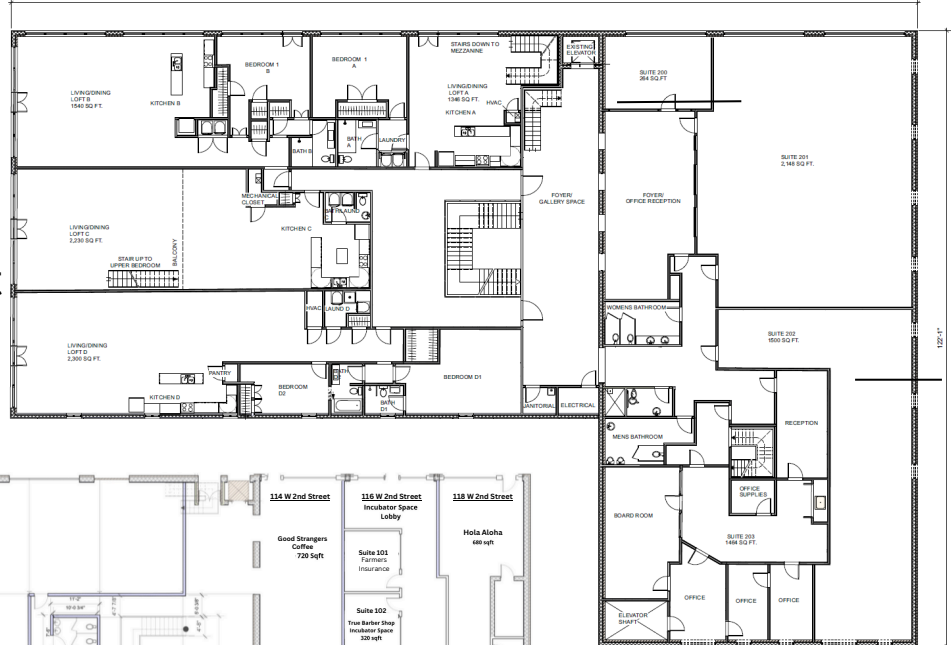
201 N MAIN ST
TAYLOR, TX 76574

TIERRAGRANDESTATE.COM

Available Space:

- Suite 105 | 420
- Loft C | 2230 sqft
- Loft D | 2300 sqft
- Suite 205 | 1500 sqft
- Suite 203 | 1454 sqft

Floor 1



Floor 2

- Incubator Space
- Retail Space
- Premium Office Space
- Historic Restoration Project
- 90% occupied

OUR STORY

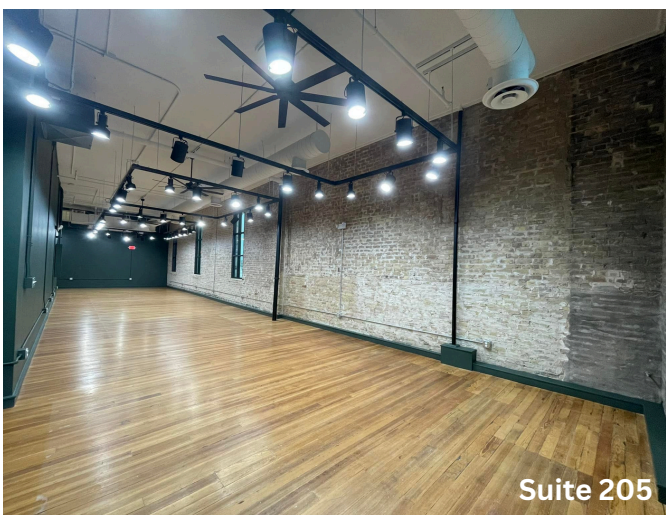
AS RESIDENTS OF TAYLOR, WE HAVE A STRONG COMMITMENT TO THE COMMUNITY AND THE PEOPLE WHO LIVE HERE.

The McCrory Timmerman Building is a landmark structure that mirrors the strength and character of generations of cotton farmers, merchants, tradesmen, and cattle ranchers who have made Central Texas their home. For one hundred twenty eight years, it has anchored the corner of Second and Main Streets downtown, and today, it welcomes new residents and businesses that are reviving a country town with a noble past.



Building Fact:

The foundation of the building are bell footings which rest 10 feet beneath the ground level and the alley surface. They are 62" thick at their base and taper to 34" at ground level. The first floor wall thickness is 18-20" and the upper level 16".



Suite 205



Suite 205