



Commercial/Retail Land Available

Southwest corner 121st Street & Elm Place, Broken Arrow



Features

- Lot Sizes of .54, 1.40 and 3.60 Acres
- Final Plat Approval
- Zoned for Commercial/Retail Use (PUD 199)
- Approved for "Fee in Lieu of Detention" (Letter DD-020209-04)
- All Public Utilities Available to Site
- Copies of PUD, Restrictions and Detention Letter are Available

OWASSO LAND TRUST

Brian Beam, CCIM ■ brianbeam@owassolandtrust.com

Office: (918) 376-6536 ■ Cell: (918) 859-5584 ■ Fax: (918) 376-6836

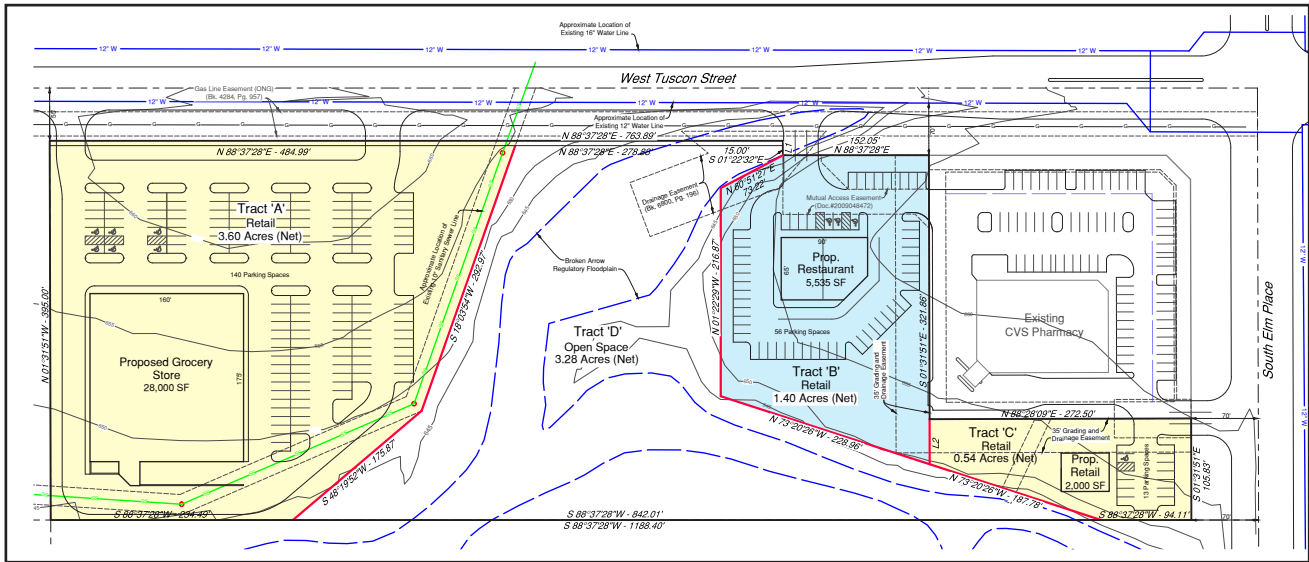
Bob Parker, CCIM ■ bob.parker@owassolandtrust.com

Office: (918) 376-6545 ■ Cell: (918) 605-5865 ■ Fax: (918) 376-6845



Southwest corner 121st Street & Elm Place

Conceptual Site Plan



Radius	Population	Average Household Income	2017-22 Growth
1 mile	8,800	\$90,801	1.26%
3 mile	37,056	\$87,314	1.56%
5 mile	88,991	\$92,157	1.52%



Brian Beam, CCIM ■ brianbeam@owassolandtrust.com

Office: (918) 376-6536 ■ Cell: (918) 859-5584 ■ Fax: (918) 376-6836

Bob Parker, CCIM ■ bob.parker@owassolandtrust.com

Office: 918-376-6545 ■ Cell: 918-605-5865 ■ Fax: 918-376-6845

12150 E. 96th Street North
Suite 200, Owasso, OK 74055