



252 Madison Ave

252 Madison Ave, Perth Amboy, NJ 08861

Sebastian Trujillo

ETC Management

270 King St, Perth Amboy, NJ 08861

etcmanagement21@gmail.com

(732) 589-4470



252 Madison Ave

\$30.00 /SF/YR

Perfect corner location, space is in vanilla box condition, ready for a tenant to move-in. Between the 2 most highly trafficked streets in town. Smith and Market. If you have any questions pertaining to this listing please reach out to 732-589-4470...

- Heavy daytime foot traffic



| | |
|----------------------|------------------------|
| Rental Rate: | \$30.00 /SF/YR |
| Property Type: | Retail |
| Property Subtype: | Storefront |
| Gross Leasable Area: | 12,000 SF |
| Year Built: | 1910 |
| Walk Score ®: | 95 (Walker's Paradise) |
| Transit Score ®: | 47 (Some Transit) |
| Rental Rate Mo: | \$2.50 /SF/MO |

1st Floor Ste 101

| | |
|-----------------|----------------|
| Space Available | 1,317 SF |
| Rental Rate | \$30.00 /SF/YR |
| Date Available | 30 Days |
| Service Type | Negotiable |
| Space Type | Relet |
| Space Use | Office/Retail |
| Lease Term | Negotiable |

Tenant vacated space is ready for move in, in vanilla box condition. Building has a newly repaired roof and amazing corner location between smith and market street, 2 most trafficked areas of Perth amboy. Contact 732-589-4470 for more info

1st Floor Ste 102

| | |
|-----------------|----------------|
| Space Available | 1,396 SF |
| Rental Rate | \$30.00 /SF/YR |
| Date Available | 30 Days |
| Service Type | Negotiable |
| Space Type | Relet |
| Space Use | Office/Retail |
| Lease Term | Negotiable |

Tenant will vacate upon new lease. Space is ready for move in, in vanilla box condition. Building has a newly repaired roof and amazing corner location between smith and market street, 2 most trafficked areas of Perth amboy. Contact 732-589-4470 for more info

Major Tenant Information

| Tenant | SF Occupied | Lease Expired |
|---------------------|-------------|---------------|
| Jessie Beauty Salon | 1,381 | |
| Pancho's Sneakers | - | |
| Popular Bank Inc. | - | |



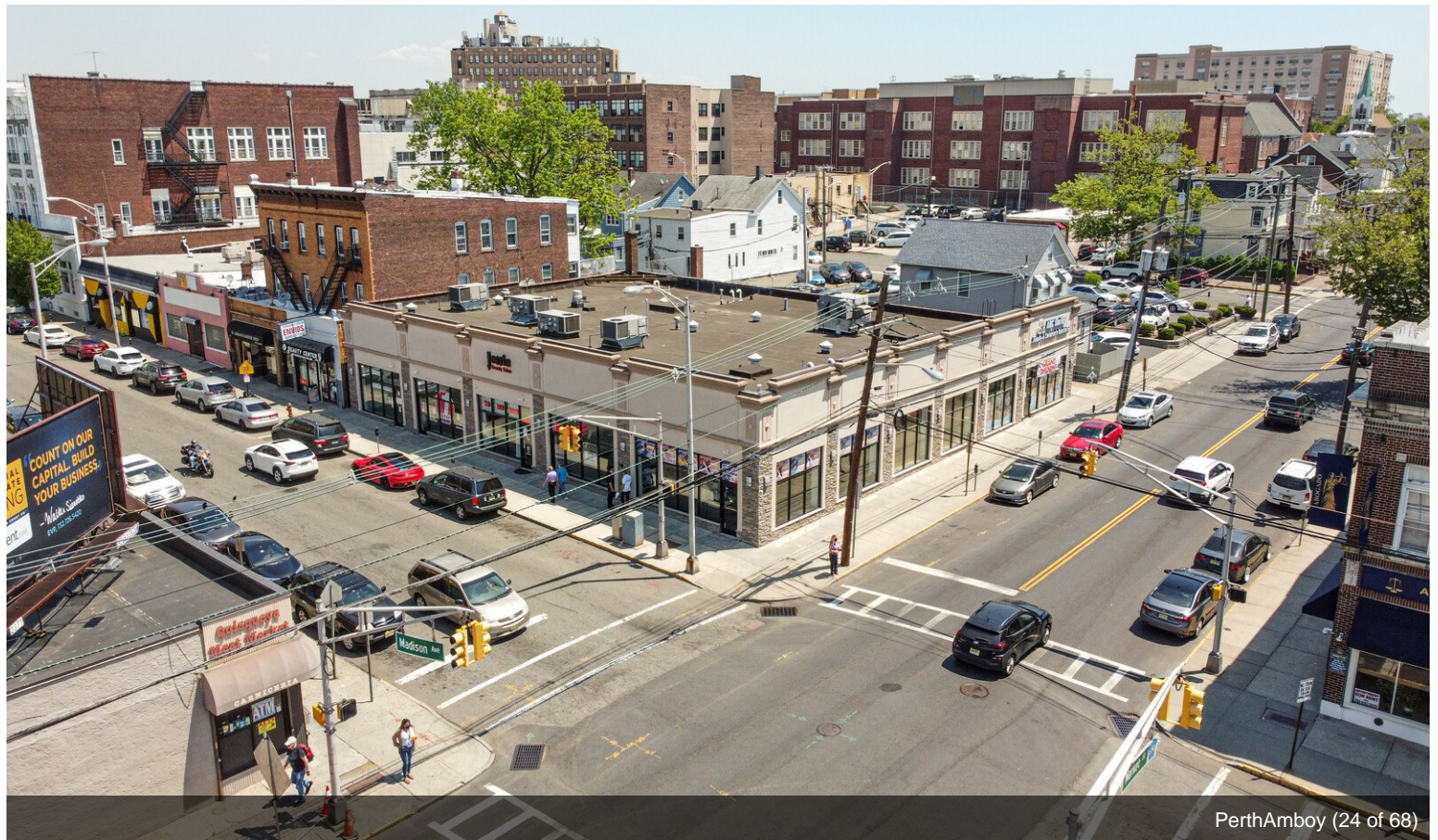
252 Madison Ave, Perth Amboy, NJ 08861

Perfect corner location, space is in vanilla box condition, ready for a tenant to move-in. Between the 2 most highly trafficked streets in town. Smith and Market. If you have any questions pertaining to this listing please reach out to 732-589-4470

Property Photos



252madisonaerial (1 of 1)



PerthAmboy (24 of 68)

Property Photos

