



5277 Manhattan Circle

Boulder, CO

Move-In Ready Office Suites with Flatiron Views

Jaime Pletcher

jaime@gibbonswhite.com
(303) 586-5936

www.gibbonswhite.com

Property Info & Gallery

View Map

Suite 100	567 sq. ft.	\$17.00 NNN \$14.50 NNN
Suite 118	994 sq. ft.	\$17.00 NNN \$14.50 NNN
Suite 200	1,016 sq. ft.	\$21.00 NNN \$19.00 NNN
Expenses / sq. ft. (2026)		\$13.90*

**Not Including Utilities*

- Quiet Building Ideal for Medical or Professional Office Use
- Suite 100 is Efficiently Designed for Medical or Wellness Use with a Reception Area, Private Office, & Exam Room Along with a Shared Patio
- Suite 118 Features Western Views, Waiting Area, Private Offices, Exclusive Patio & Shared Kitchen
- Suite 200 Offers a Reception Area, Open Work Area, 3 Large Private Offices, Full Kitchen, & Expansive Patio with Flatiron Views
- Remodeled Building Features an Elevator, Rooftop Terrace, Tenant Shower & On-Site Management
- Free Covered Parking, Street Parking, Reserved Client / Patient Parking & Close Proximity to RTD
- Conveniently Located Just Off of Hwy 36 & Foothills Parkway

© 2026 Gibbons-White, Inc.

First Floor

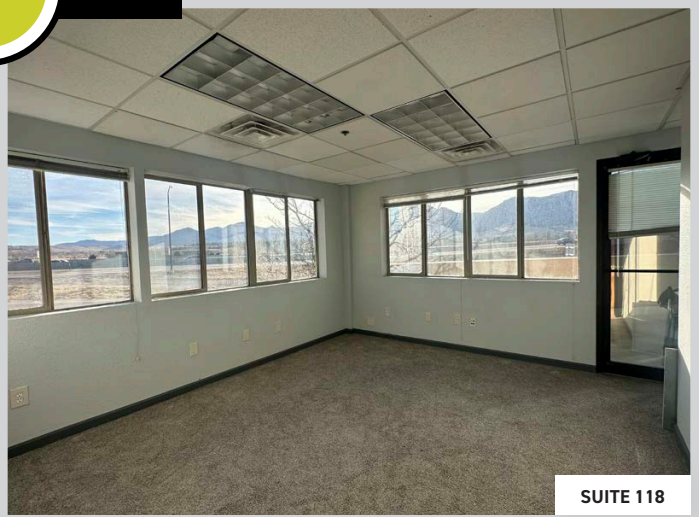
Suite 100 - 567 sq. ft.

Suite 118 - 994 sq. ft.

Offices 106 & 108 are also available for \$650 - \$875/ Month FSG



SUITE 100



SUITE 118



PRIVATE PATIO



FIRST FLOOR WAITING AREA

Second Floor

Suite 200 - 1,016 sq. ft.

Single Offices in Suite 250 are also available for \$675 - \$ 1,1150/ Month FSG

