



For sublease

815 S. Donaghey Ave., Conway, AR

For Sublease: Medical Clinic

Features

- Building size: 6,246 SF
- Lease rate: \$20.00/SF, NNN
- Sublease expiration date: April 30, 2031
- Traffic count: approximately 31,500 vehicles per day on Dave Ward Drive and 12,000 vehicles per day on S Donaghey Avenue
- Playground on-site
- Easy access to I-40

Copyright © 2021 Colliers International. Information herein has been obtained from sources deemed reliable, however its accuracy cannot be guaranteed. The user is required to conduct their own due diligence and verification.

Asking Price:

\$20.00
PSF NNN

Contact us:

Nathan Monan

+1 501 850 0710

nathan.monan@colliers.com

Colliers | Arkansas

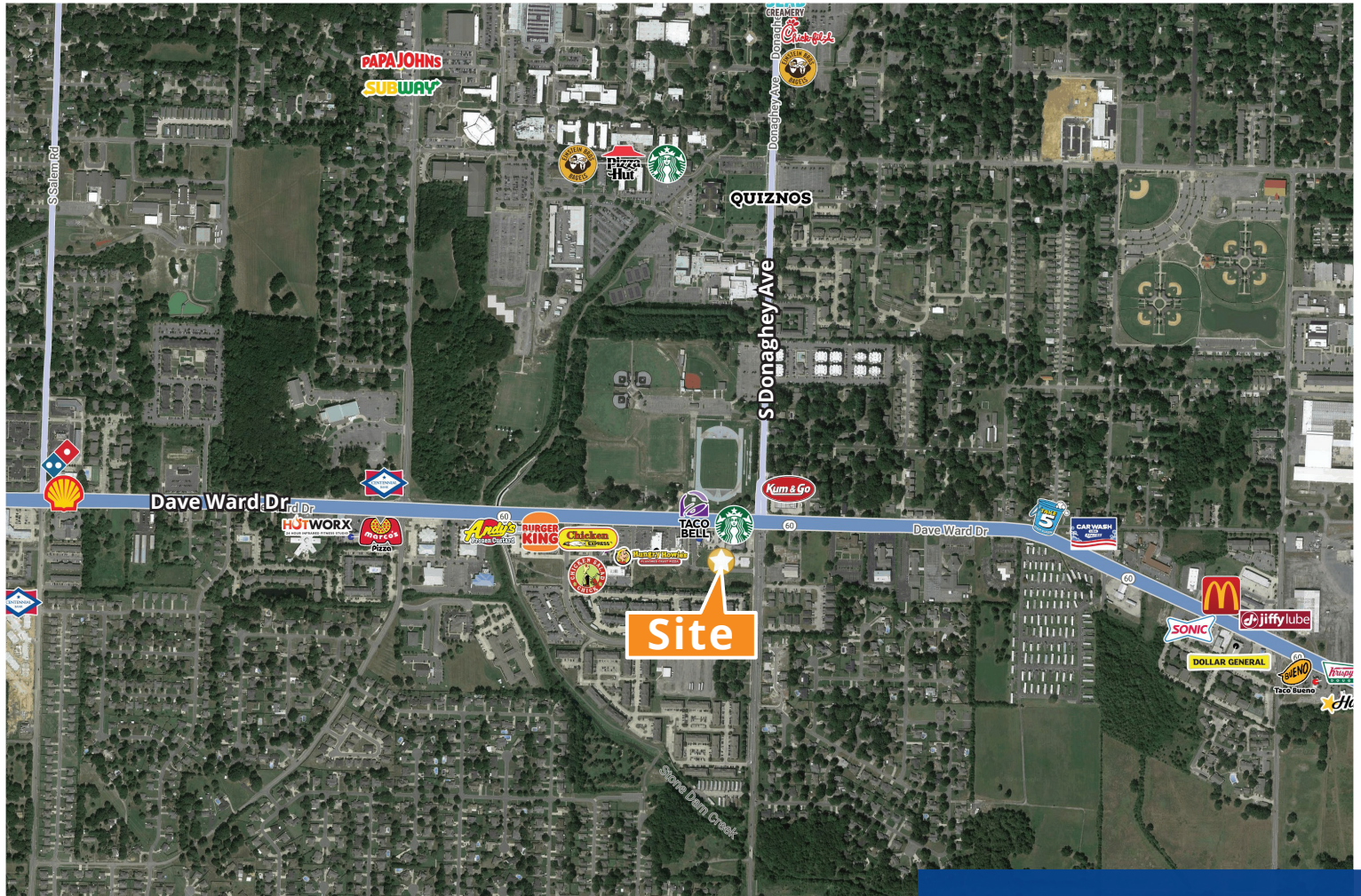
1 Allied Drive, Suite 1500

Little Rock, AR 72202

P: +1 501 372 6161

F: +1 501 372 0671

Neighborhood Map



2024 Demographics

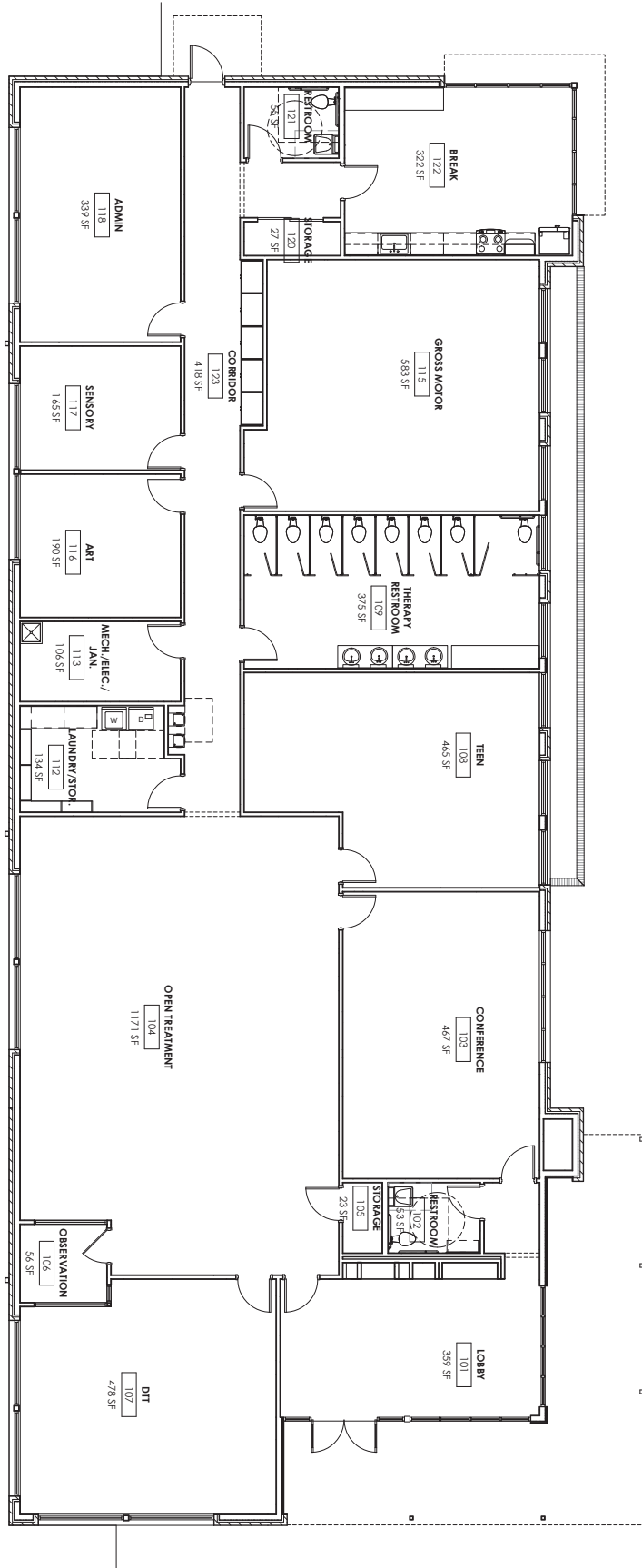
	1 Mile	3 Mile	5 Mile
Estimated Population	13,825	52,047	75,730
Estimated Households	5,068	20,917	30,483
Estimated Avg. Household Income	\$54,129	\$74,687	\$83,751

Contact us:

Nathan Monan
 +1 501 850 0710
 nathan.monan@colliers.com

1 Allied Drive, Suite 1500,
 Little Rock, AR 72202
 P: +1 501 372 6161
 colliers.com/arkansas

Floor Plan



Contact us:

Nathan Monan

+1 501 850 0710

nathan.monan@colliers.com

1 Allied Drive, Suite 1500,
Little Rock, AR 72202

P: +1 501 372 6161

colliers.com/arkansas