

CORRY PLAZA



320-390 W Columbus Ave

Corry, Pa 16407

18,070 SF Available


**Former
Save-A-Lot
18,070
SF
Available**



Stores in this Shopping Center:

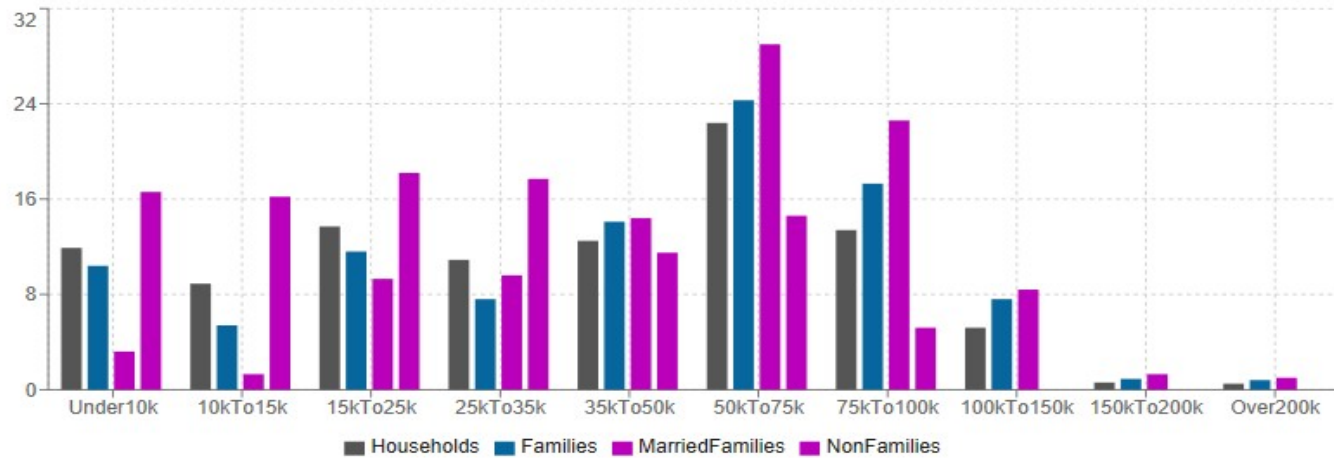
- **Tractor Supply Company**
- **Family Dollar**
- **Key Bank**
- **CVS**
- **Verizon Wireless**
- **Wine & Spirits**
- **Joe's Smoke Shop**





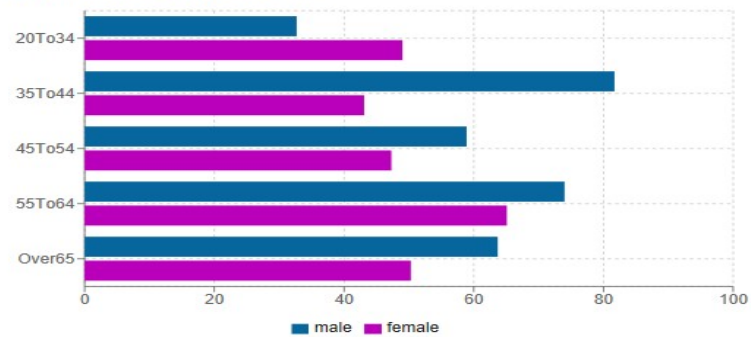
Corry PA Demographics

Corry Pa Income by Household Type



| Name | Median | Mean | ≡ |
|------------------|----------|----------|---|
| Households | \$41,744 | \$48,645 | |
| Families | \$50,446 | \$56,932 | |
| Married Families | \$60,900 | \$ | |
| Non Families | \$24,545 | \$29,772 | |

Corry Pa Married by Age and Sex



• **Population**-With 6,605 people, with 3,134 being male, and 3,471 being female.

• **Race & Ethnicity**-The largest Corry racial/ethnic groups are White (93.5%) followed by Black (3.2%) and Two or More (1.7%).

• **Median Income**-In 2017, the median household income of Corry residents was \$41,744.

• **Median Age**-The median age for Corry residents is 38.5 years old.





Recent Upgrades:

- Lights - Entire shopping center has upgraded to LED lighting.
- Roofing – New roofing installed to uphold weather conditions.
- Asphalt – Renovated parking lot.



Additional Surrounding Information

- **Vibrant Downtown Scene:** The property is located in the heart of Corry's downtown area, offering a vibrant and bustling environment. Tenants can benefit from the lively atmosphere, attracting foot traffic and creating a vibrant community hub.
- **Proximity to Local Amenities:** The area is surrounded by a diverse range of amenities, including popular restaurants, cafes, boutique shops, entertainment venues, and parks. Tenants can take advantage of these amenities to enhance the overall experience for their customers and employees.
- **High Visibility and Foot Traffic:** W Columbus Ave is a well-known commercial corridor in Corry, ensuring high visibility and significant foot traffic. This prime location provides excellent exposure for businesses, increasing their brand awareness and potential customer base.
- **Close Proximity to Residential Neighborhoods:** The property is situated in close proximity to residential neighborhoods, ensuring a steady flow of potential customers within the immediate vicinity. This can lead to increased patronage and customer loyalty for businesses in the area.
- **Strong Community Support:** Corry, PA has a tight-knit community that values local businesses. Tenants can benefit from the support and patronage of the community, fostering a sense of loyalty and creating a sustainable customer base.
- **Strategic Location:** Corry, PA serves as a regional hub, attracting visitors from nearby towns and cities. The property's strategic location provides businesses with the opportunity to tap into a broader customer base beyond the immediate area.
- **Supportive Business Environment:** Corry, PA boasts a supportive business environment, with local organizations and resources available to help businesses thrive. Tenants can benefit from networking opportunities, business development programs, and collaboration within the local business community.

**For More Information
or to see the location
please contact:**

A.J.M.D. Realty Corp

P: 718-484-4901

C: 347-992-1088

E: AJJMDProperties@gmail.com