

CREATIVE OFFICE FOR LEASE

1410 Abbot Kinney Blvd

VENICE, CA



NEWMARK

Andrew Jennison
Vice Chairman
t 310-407-6518
andrew.jennison@nrmk.com
CA RE Lic. #01275687

Daniel Pickart
Senior Managing Director
t 310-407-6515
daniel.pickart@nrmk.com
CA RE Lic. #01914551

Renee Nelson
Transaction Manager
t 310-407-6517
renee.nelson@nrmk.com
CA RE Lic. #01991249

1410 Abbot Kinney

Now available-- a bright, character-rich 2nd floor creative office suite positioned on Abbot Kinney Blvd—one of the most dynamic retail and lifestyle corridors in the country. Surrounded by premier dining, retail, and wellness amenities, this centrally located space invites true creatives to plug into the best of Venice.

- Architectural character: vaulted ceilings with skylights, exposed brick, track lighting
- Indoor-outdoor flow: swing doors create an open-air feel throughout the suite
- Workspace mix: open plan collaboration areas + glass-front private offices + conference room
- Bright, airy interiors with excellent natural light
- Secured parking garage on-site
- Steps to top restaurants, cafés, boutiques, and services on Abbot Kinney Blvd
- Ideal for creative, media, design, marketing, and professional services teams



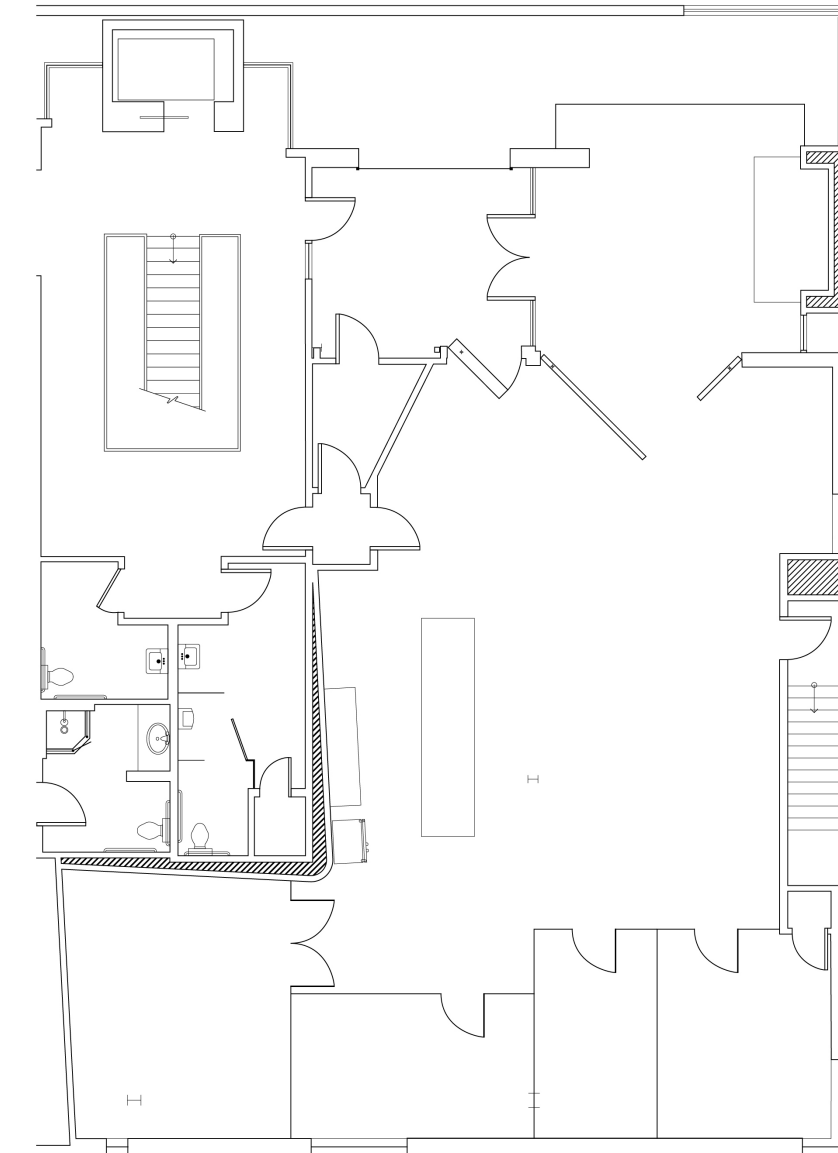
Highlights

Situated on Abbot Kinney Blvd, this 2nd floor creative office suite blends architectural character with modern functionality. The space features vaulted ceilings with skylights, exposed brick, track lighting, and glass-fronted private offices. Swing doors introduce an indoor-outdoor feel, while a dedicated conference room and open collaboration zones support agile team workflows. Enjoy immediate access to Venice's best dining, retail, and services. On-site secured garage parking available. Ideal for creative and professional teams seeking a standout address in the heart of Venice.



Floorplan

Abbot Kinney Blvd



(Not to scale, for reference only)

Neighborhood Amenities

 **98**
Walk Score









Leasing Offering

Size: ± 4,100 SF (interior/exterior)

Rent Rate : \$6.00/SF per month, plus NNN's

Lease Term: 3-5 years

Occupancy: Immediate

Parking: 8 tandem parking spaces available onsite
additional spaces available at building prevailing rate.



intimissimi

(MALIN+NETZ)

NAADAM

BUR

Corporate License #01355491

The information contained herein has been obtained from sources deemed reliable but has not been verified and no guarantee, warranty or representation, either express or implied, is made with respect to such information. Terms of sale or lease and availability are subject to change or withdrawal without notice.

NEWMARK

Andrew Jennison
Vice Chairman
t 310-407-6518
andrew.jennison@nmrk.com
CA RE Lic. #01275687

Daniel Pickart
Senior Managing Director
t 310-407-6515
daniel.pickart@nmrk.com
CA RE Lic. #01914551

Renee Nelson
Transaction Manager
t 310-407-6517
renee.nelson@nmrk.com
CA RE Lic. #01991249