

Jonathan Zimmerman

jzimmerman@willardjones.com

312.263.8787



FISHER BUILDING

OFFICE SPACE FOR LEASE

343 DEARBORN

WJ
WILLARD JONES
REAL ESTATE
www.willardjones.com

A LEGENDARY LANDMARK

The landmark Fisher Building at 343 South Dearborn was designed by the legendary architectural firm D.H. Burnham and Company. What started as an 18-story structure in 1896 added on 2 additional floors in 1907. Paper magnate Lucius Fisher was the original owner and anchor tenant.

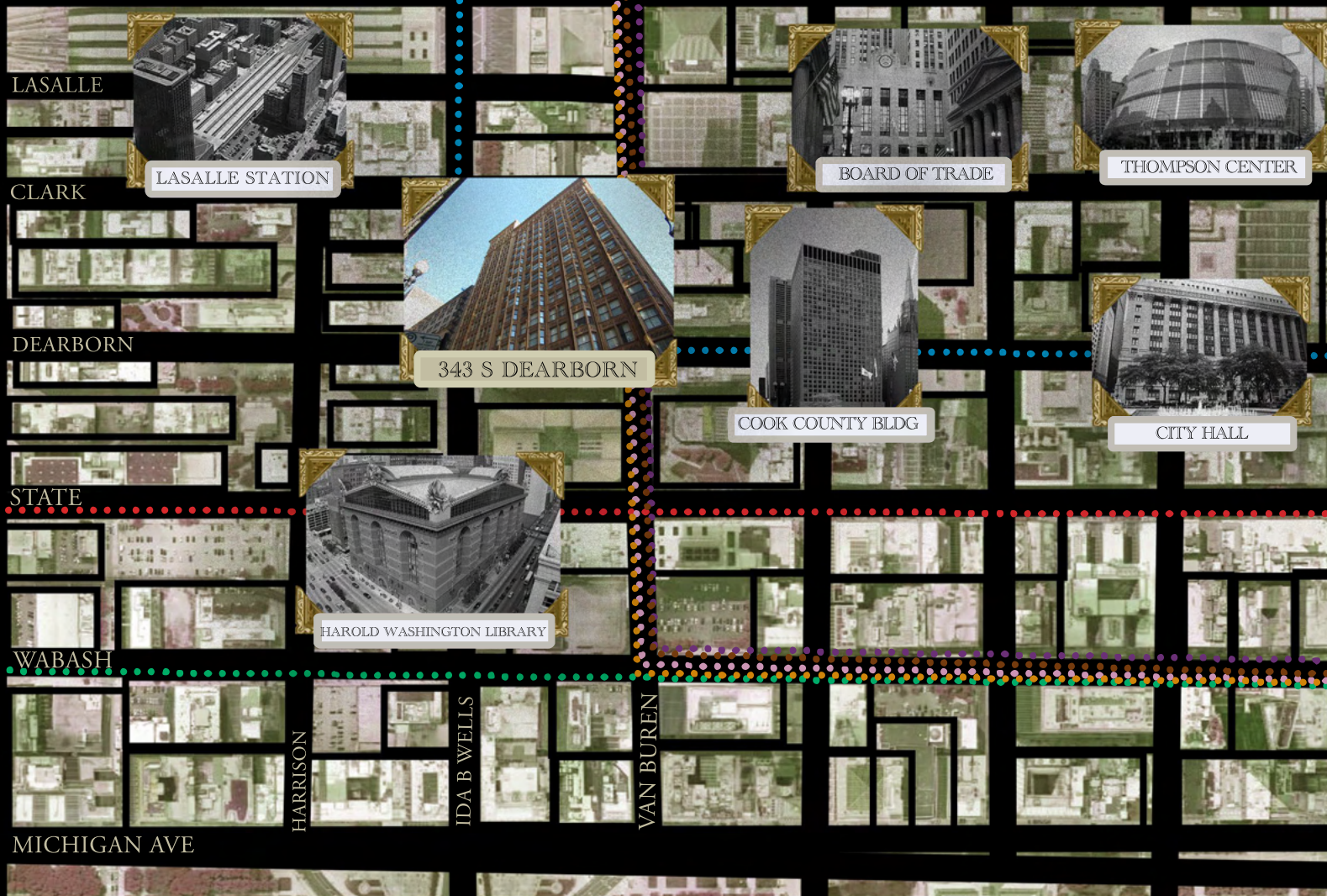
The illustrious terra-cotta facade features detailed ornamental carvings of a wide variety of creatures, including fish, crabs, eagles, dragons as well as several mythical beings. After being declared a Chicago Landmark in 1978, the National Register of Historic Places added the Fisher Building the following year.

Much of the office floor features high ceilings, huge windows, and original wood and terrazzo floors.

Tenants will enjoy onsite management and maintenance, unbeatable access to all forms of transit, and a premier office location merely steps away from circuit and federal courts, State Street shopping, as well as DePaul University, UIC, Roosevelt College, and Columbia College.

FISHER BUILDING





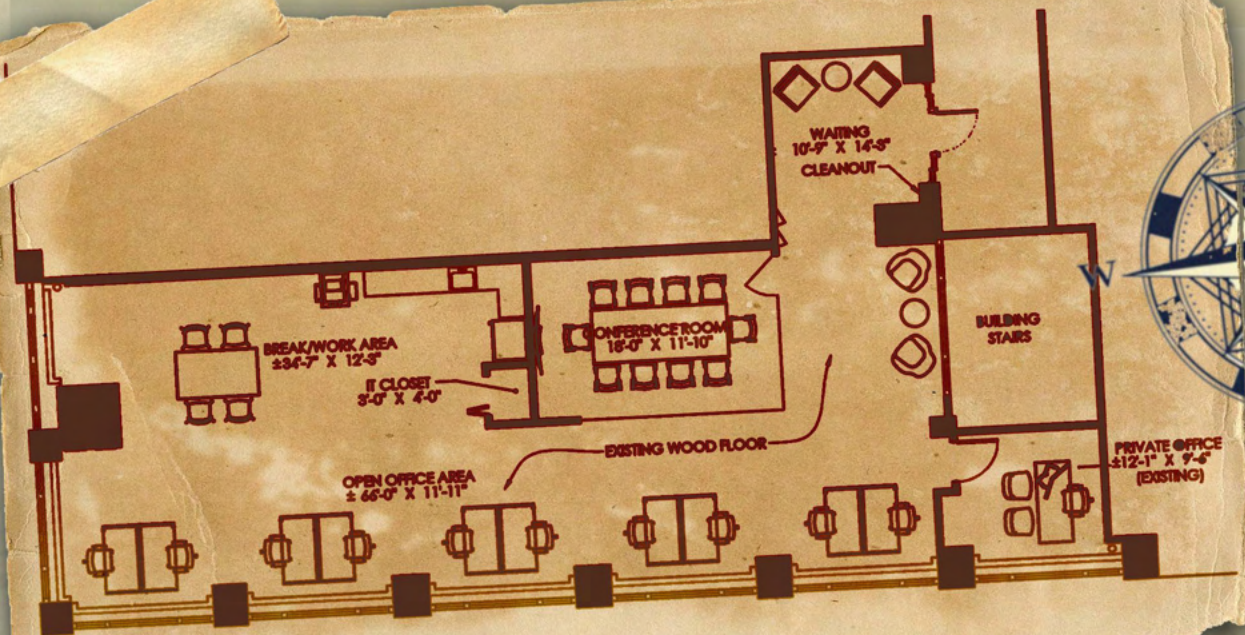
A LEGENDARY LOCATION

State/Van Buren.1 min	LaSalle (Metra). 7 min
Jackson (Blue). 3 min	Parking. 3 min radius
Jackson (Red).3 min	Walk Score. 99/100
LaSalle/Van Buren4 min	Ride Score. 100/100
LaSalle (Blue).6 min	Bike Score. 83/100

312.263.8787
WillardJones.com


WILLARD JONES
REAL ESTATE
www.willardjones.com

Jonathan Zimmerman
jzimmerman@willardjones.com



3,212 SF

MOVE-IN READY

1 OFFICE

CONFERENCE ROOM WITH GLASS WALLS

OPEN AREA

ABUNDANT WINDOW LINE

NEW KITCHEN

ORIGINAL WOOD FLOORS