

A photograph of a Walgreens store located on a historic building with classical architectural features like columns and decorative moldings. The building is situated on a city street with other buildings visible in the background. A red SUV is parked in front of the store, and several people are walking on the sidewalk. The sky is clear and blue.

FOR LEASE

24,655 SF Walgreens Space

135 Powell St | San Francisco, CA 94102



Walgreens Space

135 Powell St | San Francisco, CA 94102



24,655 SF

Building

7/1/2029

Lease End Date

Contact Broker

Asking

ABOUT THE PROPERTY

All offers are subject to approval by Walgreens Real Estate Committee.

- High profile flagship location in San Francisco's Union Square District
- Located along the historic Powell Street Cable Car line
- 3 public garages within 2 block radius
- Easily accessible by BART and several of the City's busiest bus routes
- Surrounded by numerous hotels and close proximity to the Moscone Convention Center

NEARBY RETAILERS



TRAFFIC COUNTS

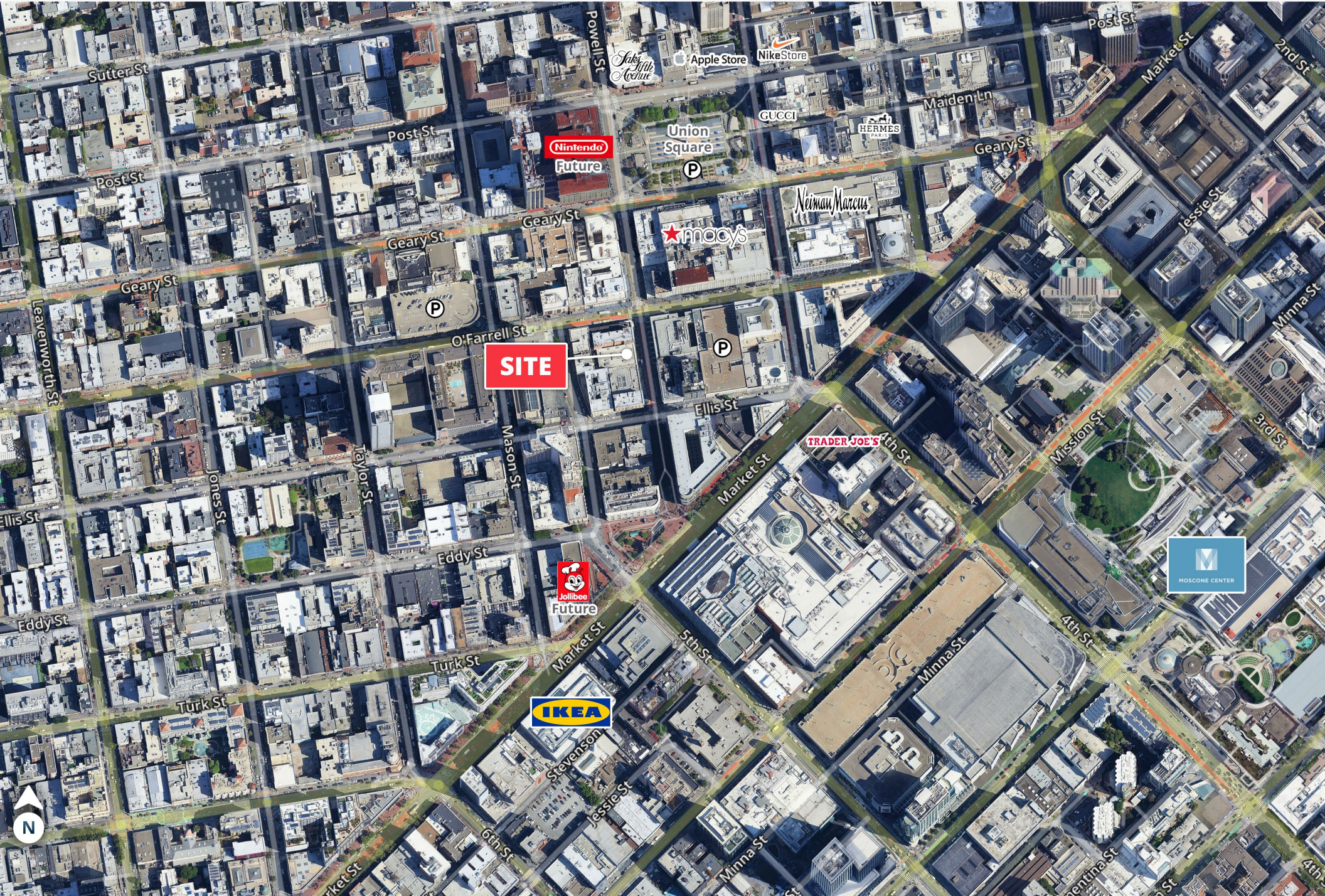
O'Farrell St

Year: 2023 | Placer Labs, Inc.

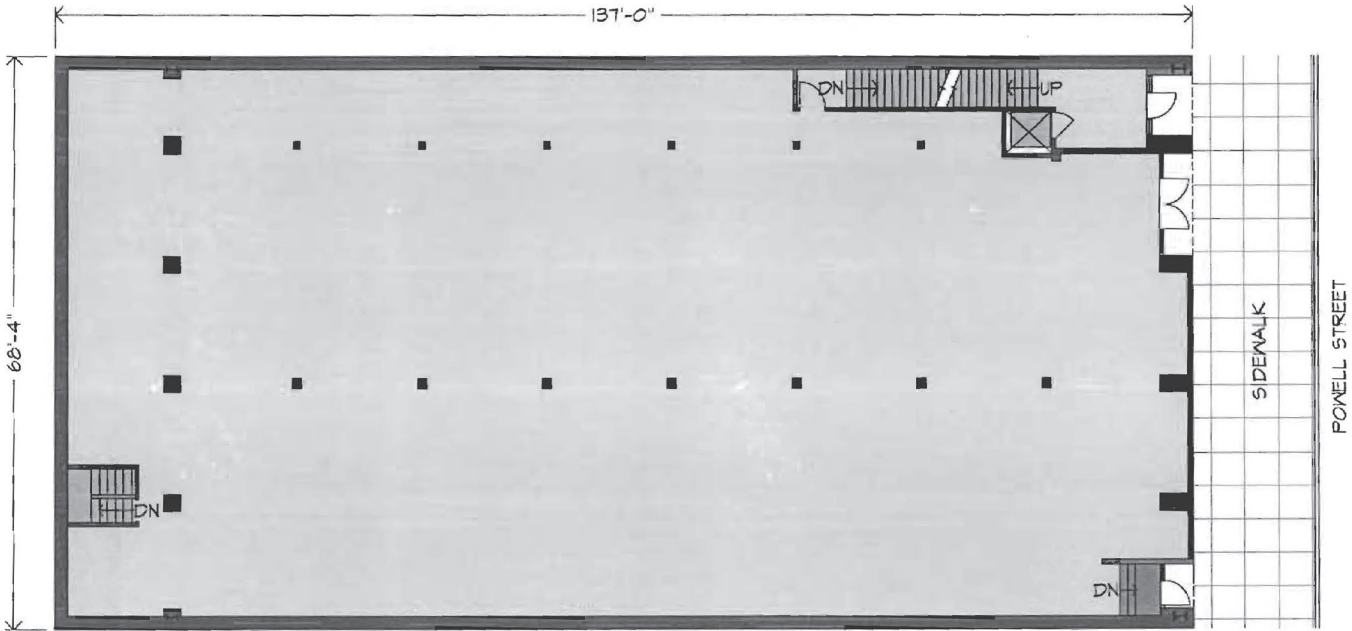
9,055 VPD

Walgreens Space

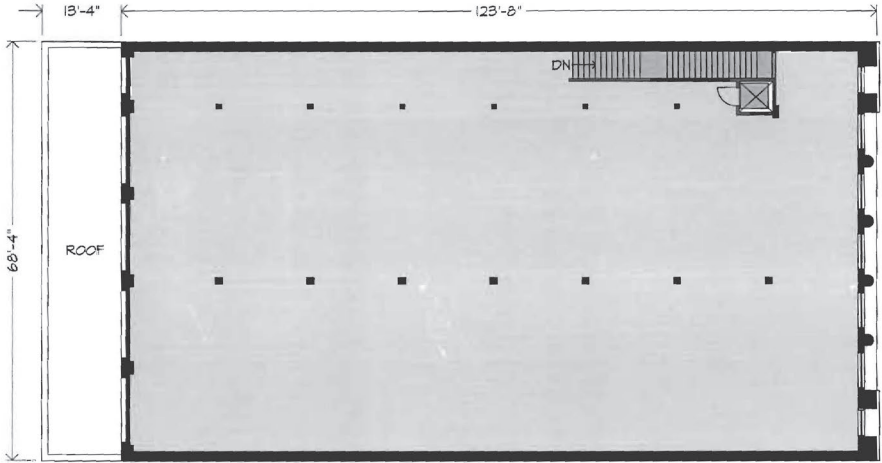
135 Powell St | San Francisco, CA 94102



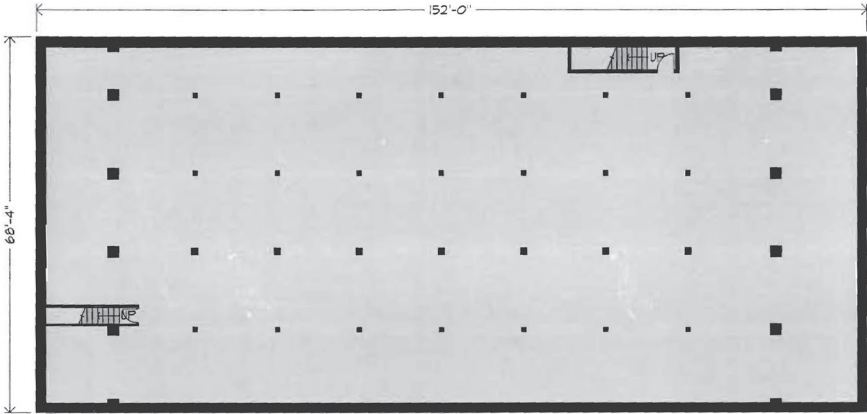
Ground Floor



2nd Floor



Basement



DEMOGRAPHIC HIGHLIGHTS

Population

	1 Mile	3 Miles	5 Miles
2024 Estimated Population	147,715	440,887	698,308
2029 Projected Population	151,770	451,156	712,168
Projected Annual Growth 2024 to 2029	0.54%	0.46%	0.39%

2024 Daytime Population

Daytime Population	399,355	733,205	957,627
Workers	347,383	599,431	720,540
Residents	51,972	133,774	237,087

2024 Income

Average Household Income	\$156,438	\$206,624	\$204,192
Median Household Income	\$93,446	\$148,397	\$147,015

Households & Growth

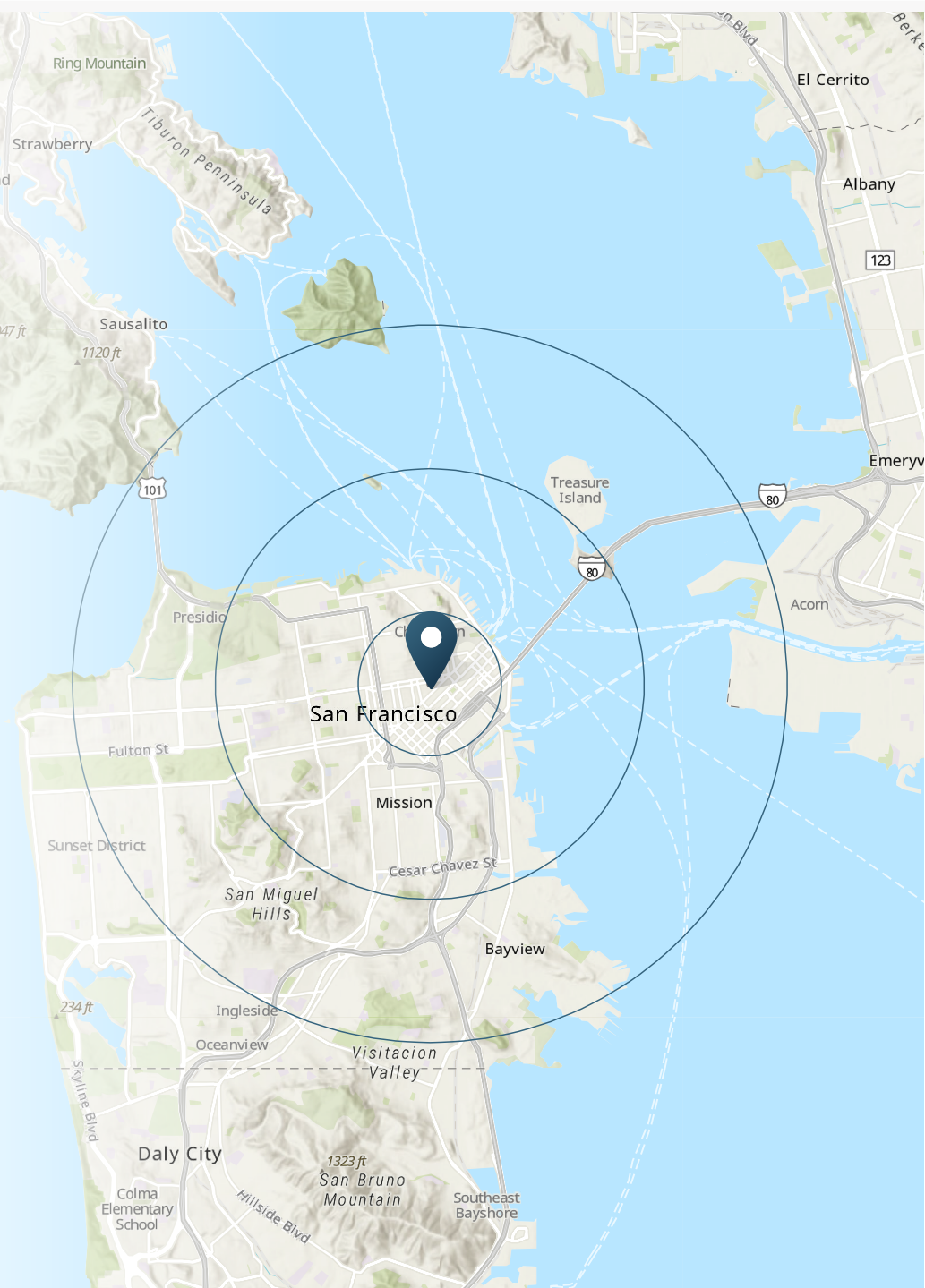
2024 Estimated Households	81,459	224,476	320,686
2029 Projected Households	83,882	229,968	327,204
Projected Annual Growth 2024 to 2029	0.60%	0.51%	0.39%

2024 Race & Ethnicity

White	34.86%	47.10%	41.82%
Black or African American	6.58%	5.25%	5.49%
Asian or Pacific Islander	40.27%	27.80%	32.12%
Other Race	8.10%	8.07%	8.72%
Two or More Races	8.77%	10.61%	10.66%
Hispanic	14.86%	15.78%	16.55%

> **Want more?** Contact us for a complete demographic, foot-traffic, and mobile data insights report.

SOURCE





SRS Real Estate Partners
150 California Street, 14th Fl
San Francisco, CA 94111
415.908.4930

Matthew D. Alexander
EVP & Principal
415.908.4938
matt.alexander@srsre.com
CA License No. 00883993

Sarah D. Edwards
First Vice President
408.216.2322
sarah.edwards@srsre.com
CA License No. 01297272

SRSRE.COM

© SRS Real Estate Partners

The information presented was obtained from sources deemed reliable;
however SRS Real Estate Partners does not guarantee its completeness or accuracy.